



STATE OF NORTH CAROLINA  
DEPARTMENT OF TRANSPORTATION

ROY COOPER  
GOVERNOR

JAMES H. TROGDON, III  
SECRETARY

**DATE:** September 10, 2018  
**TO:** Mr. Mike Mills, PE  
Division Engineer  
Division 7  
**FROM:** Mr. John C. Farley, GISP, CPM  
Manager  
Geographic Information Systems Unit  
**SUBJECT:** 2018 District 2 Road System Changes

The GIS Unit's Data Conversion Group has been authorized to make the changes indicated below to the state road system. We request that you update the related maps and files in your offices and install appropriate road number signs, if necessary. If our system changes do not conform to the actual conditions in the field, please return this memorandum with recommendations.

Document Number	County	Approval Date
R-2413A	GUILFORD	5/19/2017

Questions or comments about changes should be referred to the GIS Help Desk at [GISHelp@ncdot.gov](mailto:GISHelp@ncdot.gov).  
Thank you for your assistance.

JCF

cc: BSIP  
Bridge Maintenance  
Division Right of Way  
IMG  
Pavement Management  
Permit Unit  
State Road Maintenance  
Traffic Engineering  
Traffic Surveys

*Mailing Address:*  
NC DEPARTMENT OF TRANSPORTATION  
GEOGRAPHIC INFORMATION SYSTEMS  
1521 MAIL SERVICE CENTER  
RALEIGH, NC 27699-1521

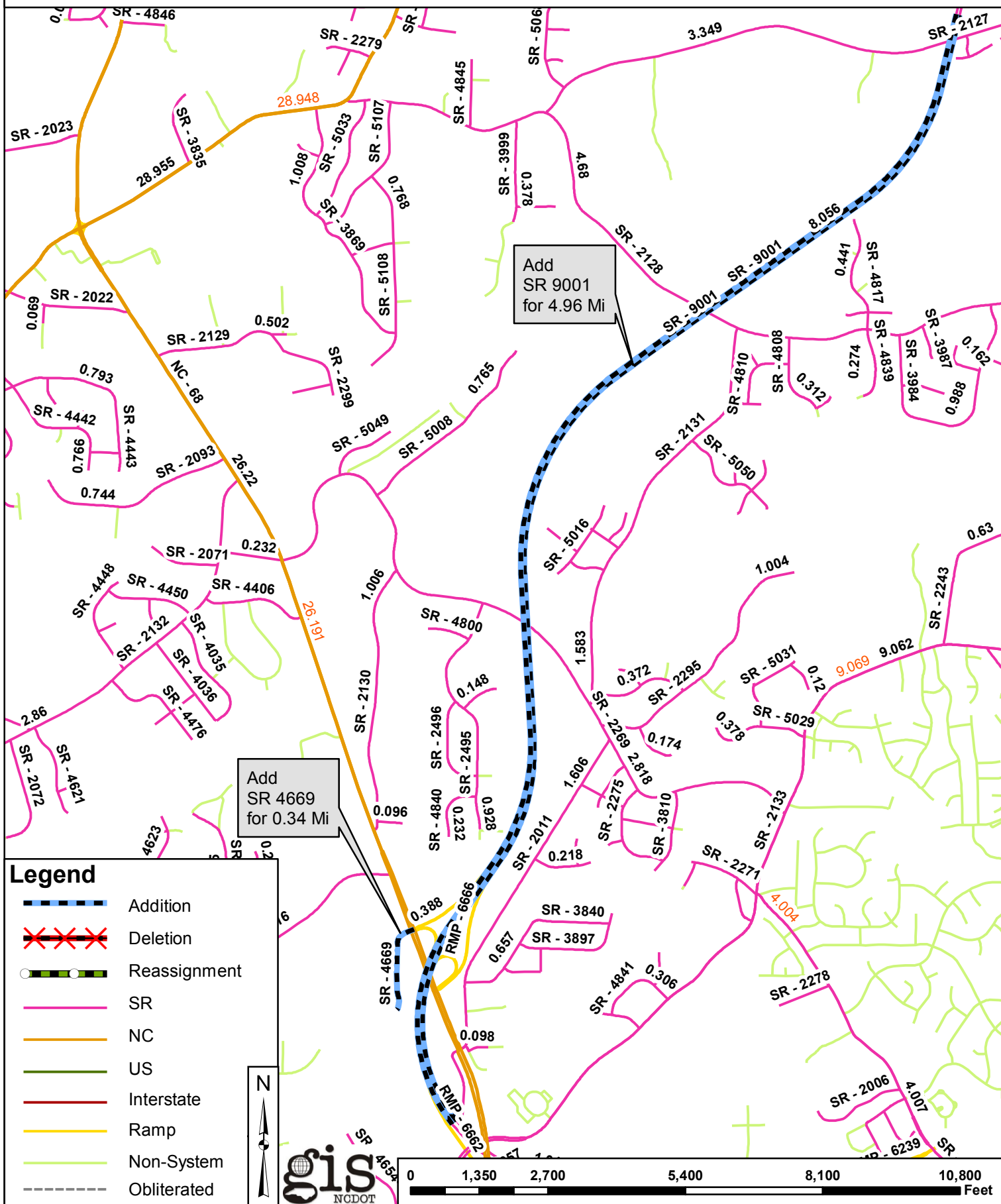
*Telephone:* (919) 707-2165  
*Fax:* (919) 707-2210  
*Customer Service:* 1-877-368-4968  
*Website:* [www.ncdot.gov](http://www.ncdot.gov)

*Location:*  
4101 CAPITAL BLVD.  
RALEIGH, NC 27604  
FAX: (919) 707-2214

# 2018 ROAD SYSTEM CHANGES

TIP	COUNTY	APPROVAL DATE	NEW ROUTE	EXISTING ROUTE	STREET NAME	LENGTH (miles)	TYPE OF CHANGE	REMARKS (See Attached Map)
R-2413A	GUILFORD	5/19/2017	SR 5076	SR 2127		0.15	REASSIGNMENT VIA TIP	MAP B, SEGMENT
R-2413A	GUILFORD	5/19/2017	SR 5074	SR 2127		0.14	REASSIGNMENT VIA TIP	MAP B, SEGMENT
R-2413A	GUILFORD	5/19/2017		SR 2127		0.68	SYSTEM ADDITION - EXISTING VIA TIP	MAP B, SEGMENT
R-2413A	GUILFORD	5/19/2017		SR 2128		0.49	SYSTEM ADDITION - EXISTING VIA TIP	MAP C, SEGMENT
R-2413A	GUILFORD	5/19/2017		SR 2131		0.02	SYSTEM ADDITION - EXISTING VIA TIP	MAP C, SEGMENT
R-2413A	GUILFORD	5/19/2017		SR 2269		0.43	SYSTEM ADDITION - EXISTING VIA TIP	MAP D, SEGMENT
R-2413A	GUILFORD	5/19/2017		SR 2133		0.49	SYSTEM ADDITION - EXISTING VIA TIP	MAP E, SEGMENT
R-2413A	GUILFORD	5/19/2017	SR 9001			4.96	SYSTEM ADDITION - NEW VIA TIP	MAP A, SEGMENT
R-2413A	GUILFORD	5/19/2017	SR 4669			0.34	SYSTEM ADDITION - NEW VIA TIP	MAP A, SEGMENT
R-2413A	GUILFORD	5/19/2017	SR 5074			0.02	SYSTEM ADDITION - NEW VIA TIP	MAP B, SEGMENT


<b>TIP</b>	<b>COUNTY</b>	<b>APPROVAL DATE</b>	<b>NEW ROUTE</b>	<b>EXISTING ROUTE</b>	<b>STREET NAME</b>	<b>LENGTH (miles)</b>	<b>TYPE OF CHANGE</b>	<b>REMARKS (See Attached Map)</b>
R-2413A	GUILFORD	5/19/2017	SR 5075			0.08	SYSTEM ADDITION - NEW VIA TIP	MAP B, SEGMENT
R-2413A	GUILFORD	5/19/2017		SR 2127		0.43	SYSTEM DELETION VIA TIP	MAP B, SEGMENT
R-2413A	GUILFORD	5/19/2017		SR 2128		0.51	SYSTEM DELETION VIA TIP	MAP C, SEGMENT
R-2413A	GUILFORD	5/19/2017		SR 2269		0.43	SYSTEM DELETION VIA TIP	MAP D, SEGMENT
R-2413A	GUILFORD	5/19/2017		SR 2011		0.20	SYSTEM DELETION VIA TIP	MAP E, SEGMENT
R-2413A	GUILFORD	5/19/2017		SR 2133		0.46	SYSTEM DELETION VIA TIP	MAP E, SEGMENT

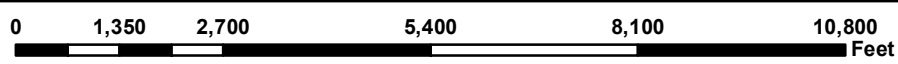


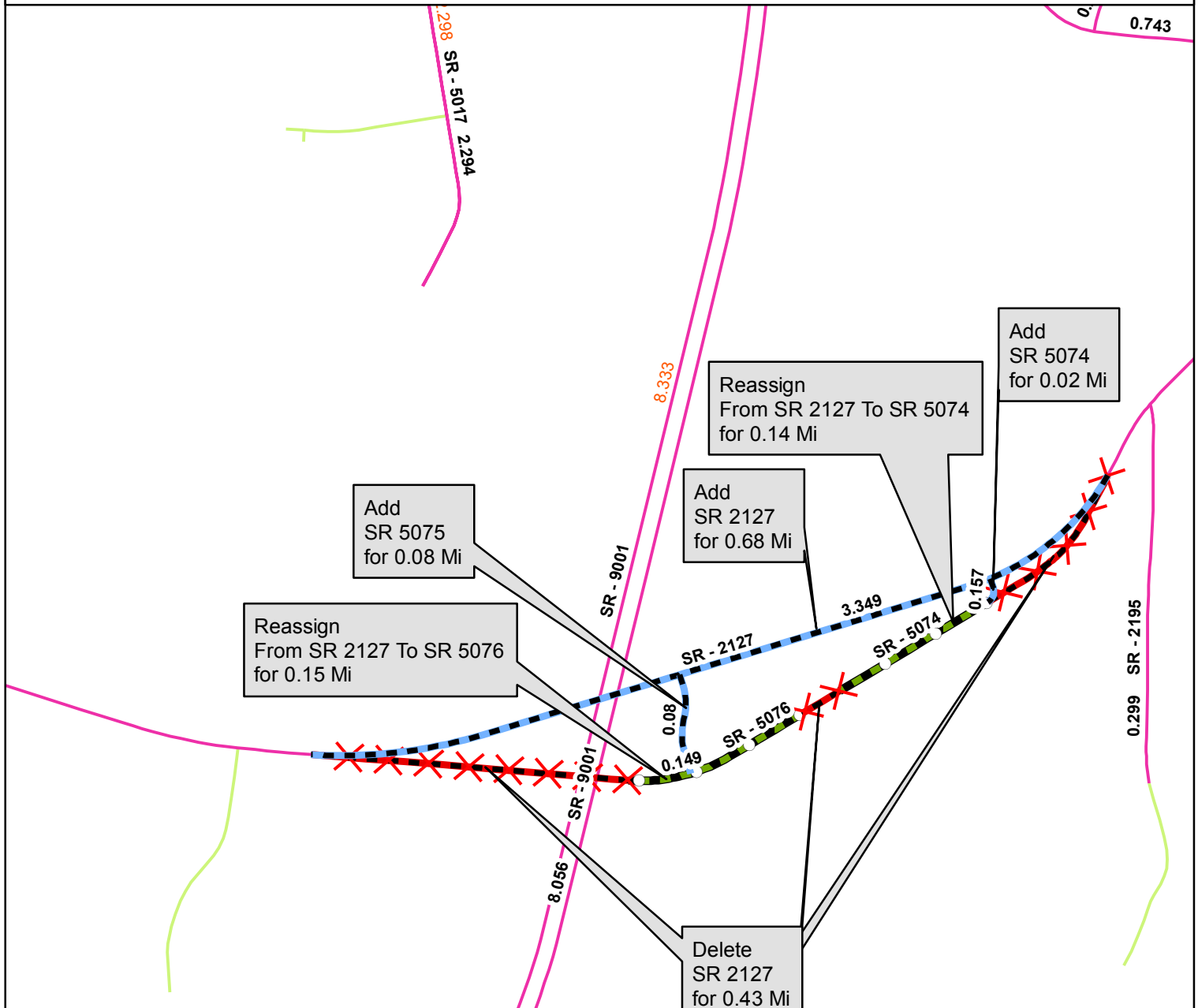
Add  
SR 9001  
for 4.96 Mi

Add  
SR 4669  
for 0.34 Mi

**Legend**

-  Addition
-  Deletion
-  Reassignment
-  SR
-  NC
-  US
-  Interstate
-  Ramp
-  Non-System
-  Obliterated

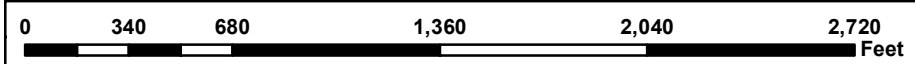


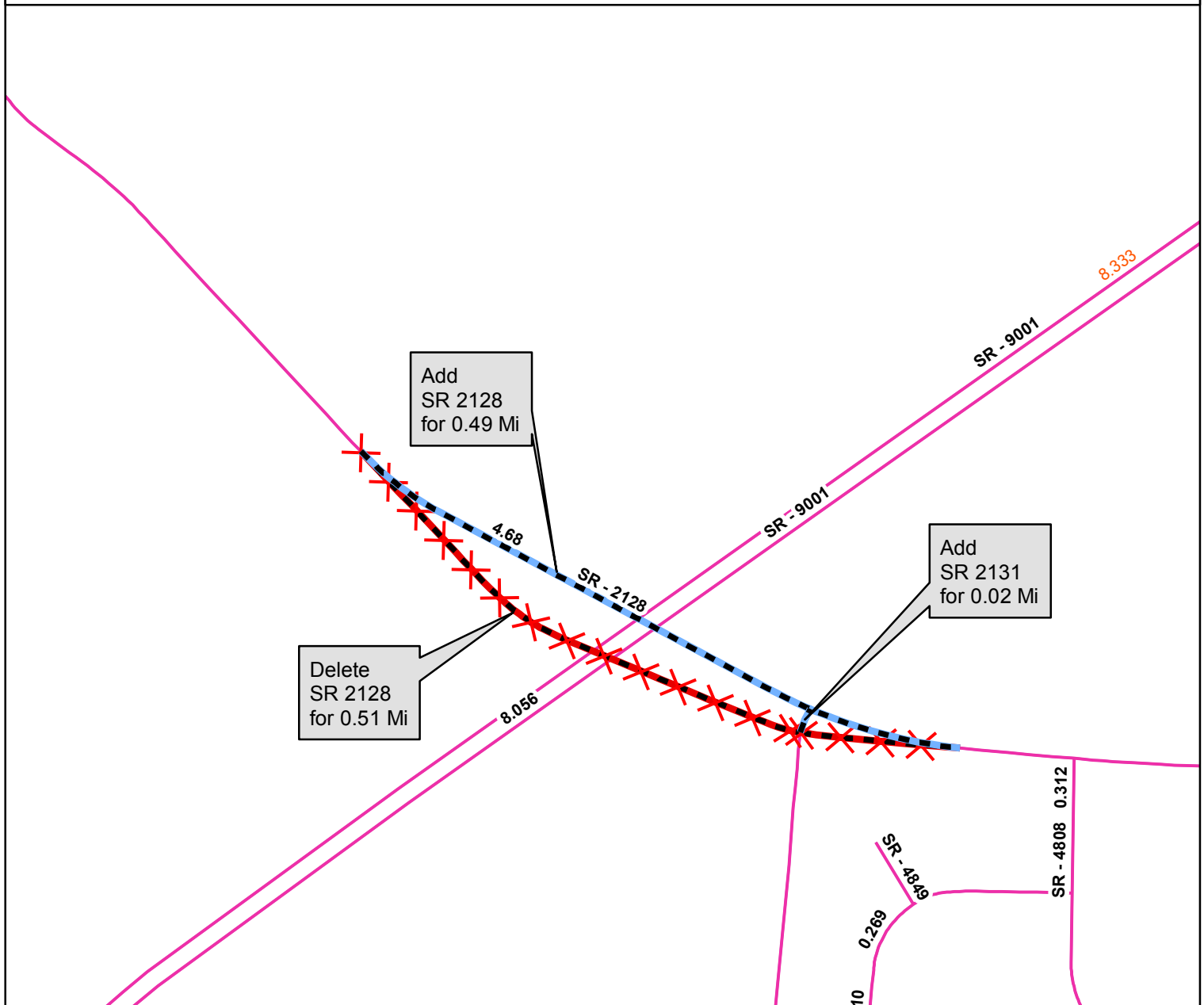


**Legend**

- Addition
- Deletion
- Reassignment
- SR
- NC
- US
- Interstate
- Ramp
- Non-System
- Obliterated

N





**Legend**

- Addition
- Deletion
- Reassignment
- SR
- NC
- US
- Interstate
- Ramp
- Non-System
- Obliterated

N  
↑

**gis**  
NCDOT

