



STATE OF NORTH CAROLINA
DEPARTMENT OF TRANSPORTATION

ROY COOPER
GOVERNOR

JAMES H. TROGDON, III
SECRETARY

DATE: August 07, 2018
TO: Mr. Mike Mills, PE
Division Engineer
Division 7
FROM: Mr. John C. Farley, GISP, CPM
Manager
Geographic Information Systems Unit
SUBJECT: 2018 District 2 Road System Changes

The GIS Unit's Data Conversion Group has been authorized to make the changes indicated below to the state road system. We request that you update the related maps and files in your offices and install appropriate road number signs, if necessary. If our system changes do not conform to the actual conditions in the field, please return this memorandum with recommendations.

Document Number	County	Approval Date
R-2309AB	GUILFORD	12/27/2016

Questions or comments about changes should be referred to the GIS Help Desk at GISHelp@ncdot.gov.
Thank you for your assistance.

JCF

cc: BSIP
Bridge Maintenance
Division Right of Way
IMG
Pavement Management
Permit Unit
State Road Maintenance
Traffic Engineering
Traffic Surveys

Mailing Address:
NC DEPARTMENT OF TRANSPORTATION
GEOGRAPHIC INFORMATION SYSTEMS
1521 MAIL SERVICE CENTER
RALEIGH, NC 27699-1521

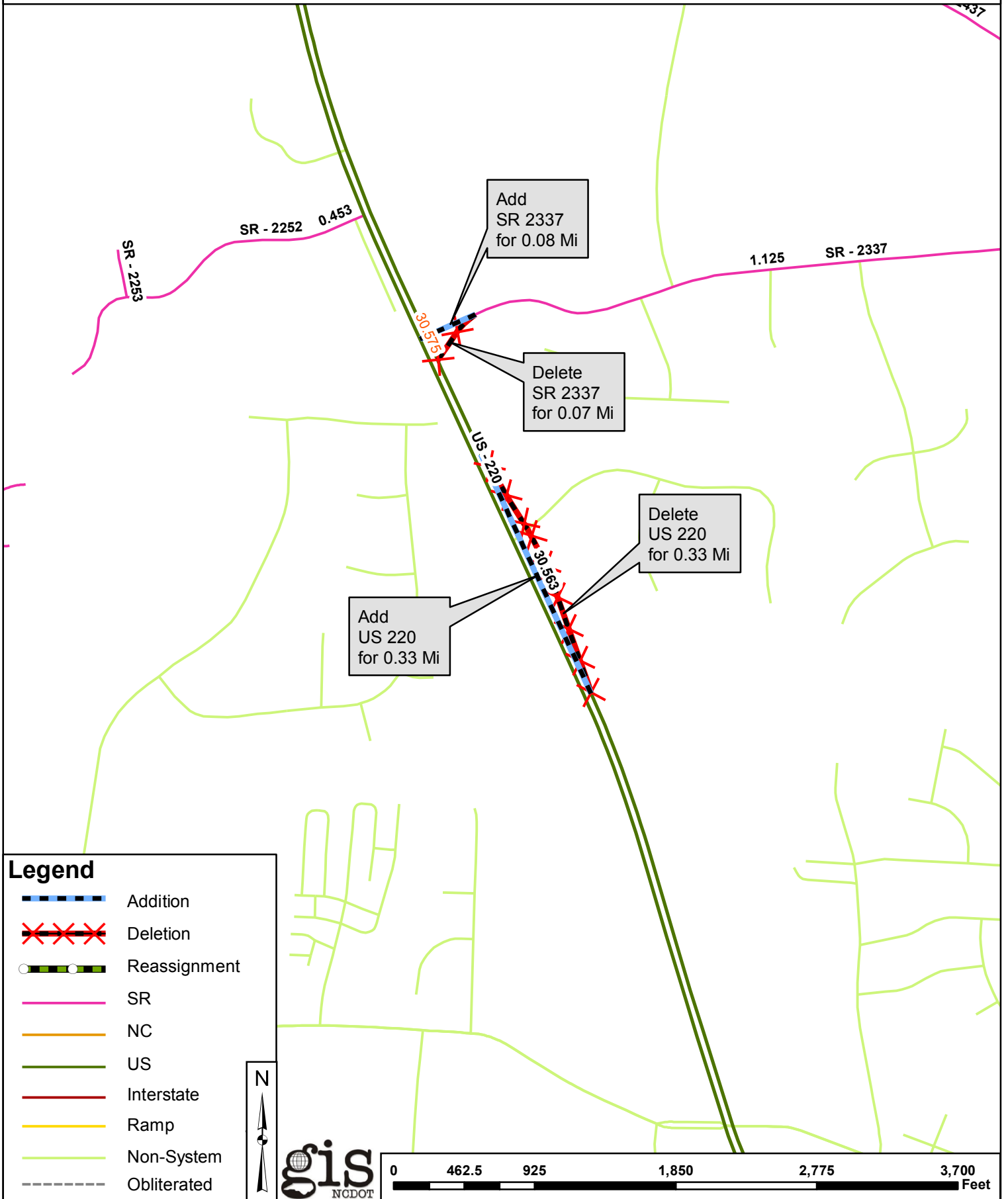
Telephone: (919) 707-2165
Fax: (919) 707-2210
Customer Service: 1-877-368-4968
Website: www.ncdot.gov

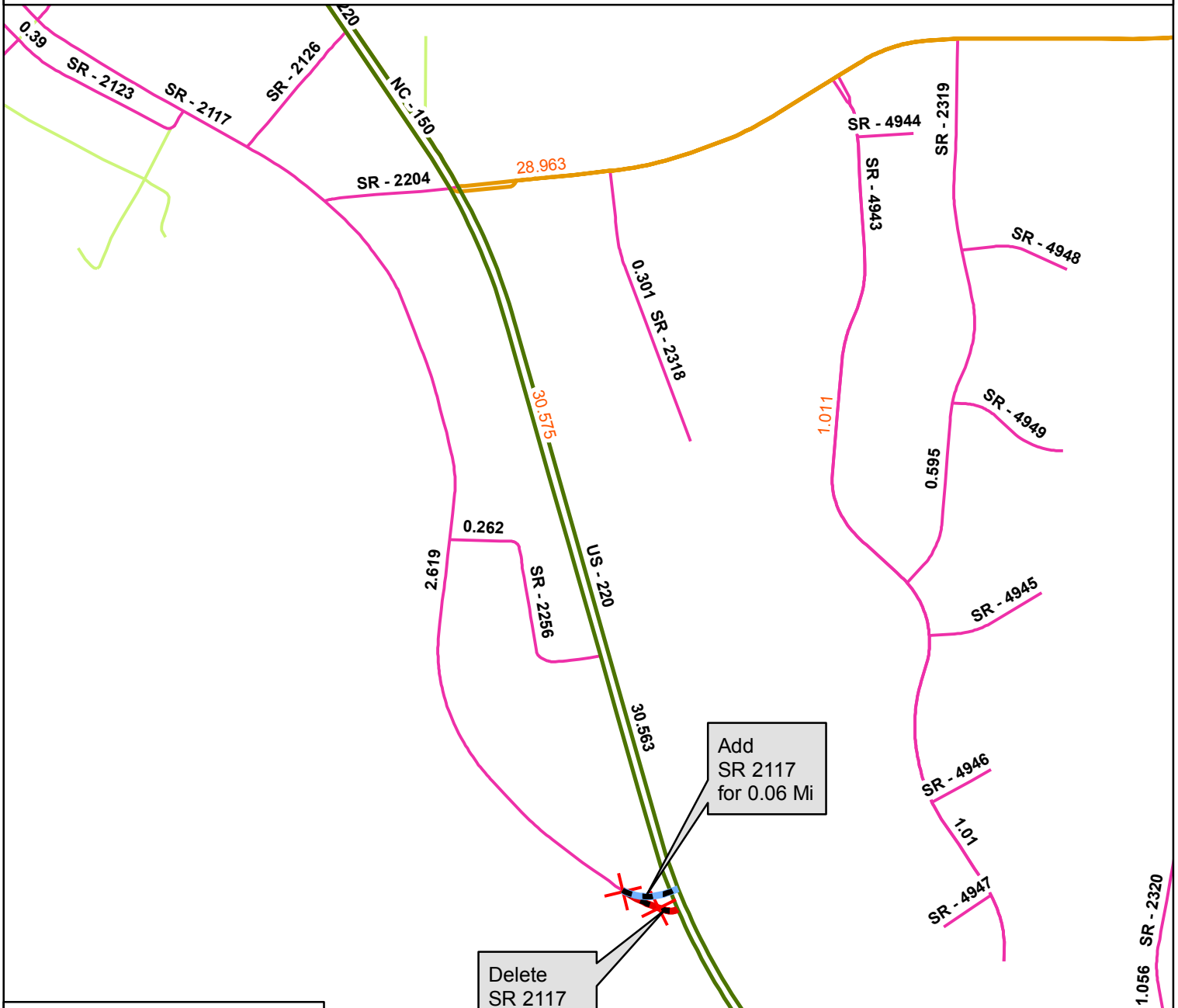
Location:
4101 CAPITAL BLVD.
RALEIGH, NC 27604
FAX: (919) 707-2214

2018 ROAD SYSTEM CHANGES

TIP	COUNTY	APPROVAL DATE	NEW ROUTE	EXISTING ROUTE	STREET NAME	LENGTH (miles)	TYPE OF CHANGE	REMARKS (See Attached Map)
R-2309AB	GUILFORD	12/27/2016	SR 5073	SR 2117		0.07	REASSIGNMENT VIA TIP	MAP C, SEGMENT
R-2309AB	GUILFORD	12/27/2016		SR 2337		0.08	SYSTEM ADDITION - EXISTING VIA TIP	MAP A, SEGMENT
R-2309AB	GUILFORD	12/27/2016		US 220		0.33	SYSTEM ADDITION - EXISTING VIA TIP	MAP A, SEGMENT
R-2309AB	GUILFORD	12/27/2016		SR 2117		0.06	SYSTEM ADDITION - EXISTING VIA TIP	MAP B, SEGMENT
R-2309AB	GUILFORD	12/27/2016		SR 2393		0.03	SYSTEM ADDITION - EXISTING VIA TIP	MAP C, SEGMENT
R-2309AB	GUILFORD	12/27/2016		SR 2117		0.08	SYSTEM ADDITION - EXISTING VIA TIP	MAP C, SEGMENT
R-2309AB	GUILFORD	12/27/2016		SR 2337		0.07	SYSTEM DELETION VIA TIP	MAP A, SEGMENT
R-2309AB	GUILFORD	12/27/2016		US 220		0.33	SYSTEM DELETION VIA TIP	MAP A, SEGMENT
R-2309AB	GUILFORD	12/27/2016		SR 2117		0.06	SYSTEM DELETION VIA TIP	MAP B, SEGMENT
R-2309AB	GUILFORD	12/27/2016		SR 2393		0.09	SYSTEM DELETION VIA TIP	MAP C, SEGMENT

TIP	COUNTY	APPROVAL DATE	NEW ROUTE	EXISTING ROUTE	STREET NAME	LENGTH (miles)	TYPE OF CHANGE	REMARKS (See Attached Map)
R-2309AB	GUILFORD	12/27/2016		SR 2117		0.11	SYSTEM DELETION VIA TIP	MAP C, SEGMENT

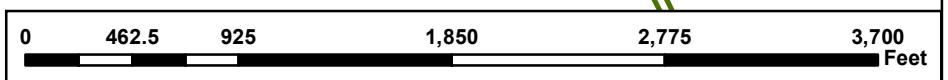


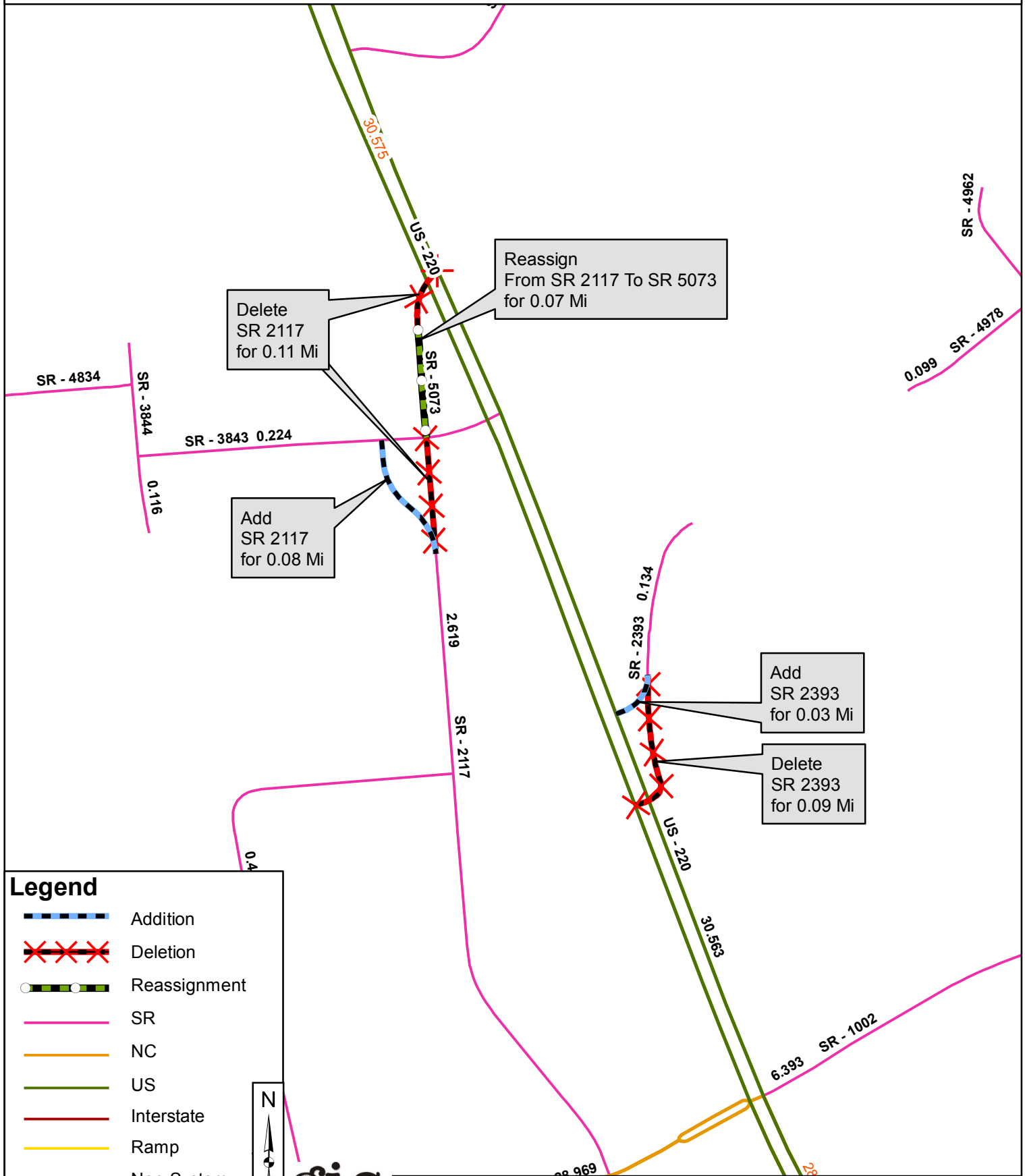


Legend

- Addition
- Deletion
- Reassignment
- SR
- NC
- US
- Interstate
- Ramp
- Non-System
- Obliterated

N





Legend

-  Addition
-  Deletion
-  Reassignment
-  SR
-  NC
-  US
-  Interstate
-  Ramp
-  Non-System
-  Obliterated

