



STATE OF NORTH CAROLINA
DEPARTMENT OF TRANSPORTATION

PATRICK MCCRORY
GOVERNOR

Tuesday, November 12, 2013

ANTHONY TATA
SECRETARY

MEMORANDUM TO: Mr. Robert W. Stone II, PE
Division Engineer
Division 8

FROM: John C. Farley, Manager
Geographic Information Systems Unit

SUBJECT: 2013 District 1 Road System Changes **-REVISED**

The Data Conversion Group has been authorized to make the following changes to the state road system as indicated below. We request that you make similar changes to the related maps and files in your Division and District offices, and install appropriate road number signs if necessary. We have updated our records accordingly. If our system changes do not conform to the actual conditions in the field, please return this memorandum with recommendations.

Document Number	County	Approval Date
R-2606B	RANDOLPH	6/7/2013

Inquiries about changes should be referred to the GIS Help Desk at (919) 707-2152.
Thank you for your assistance.

JCF

- cc: BSIP
- Bridge Maintenance
- Division Right of Way
- IMG
- Pavement Management
- Permit Unit
- State Road Maintenance
- Traffic Engineering
- Traffic Surveys

MAILING ADDRESS:
NC DEPARTMENT OF TRANSPORTATION
GEOGRAPHIC INFORMATION SYSTEMS
1521 MAIL SERVICE CENTER
RALEIGH, NC 27699-1521



DELIVERY ADDRESS:
4101 CAPITAL BLVD.
RALEIGH, NC 27604
PHONE: (919) 707-2152
FAX: (919) 707-2214

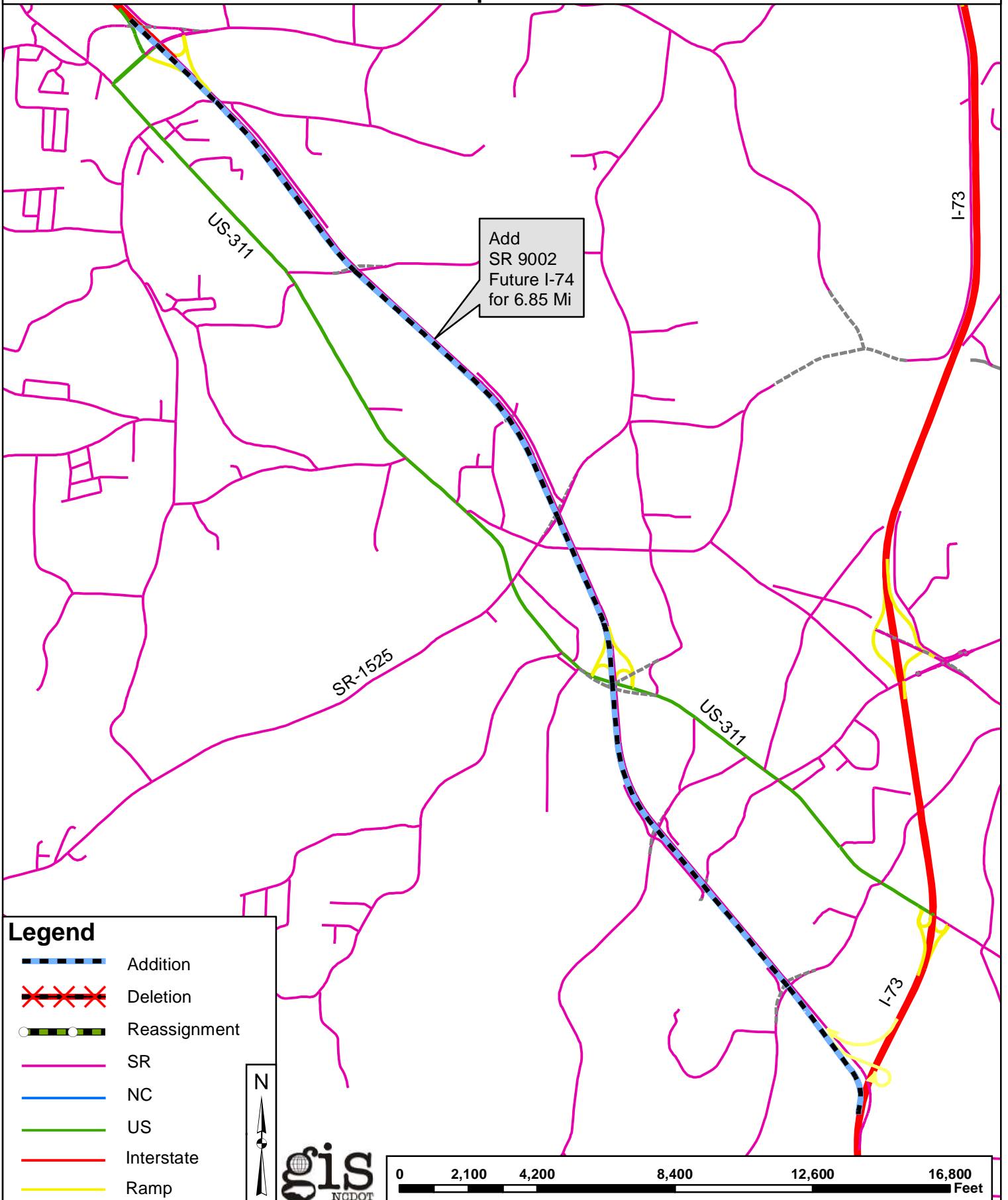
2013 ROAD SYSTEM CHANGES

TIP	COUNTY	APPROVAL DATE	NEW ROUTE	EXISTING ROUTE	STREET NAME	LENGTH (miles)	TYPE OF CHANGE	REMARKS (See Attached Map)
R-2606B	RANDOLPH	6/7/2013	SR 2076	SR 1945	NELSON PARK RD	0.06	REASSIGNMENT VIA TIP	MAP C, SEGMENT
R-2606B	RANDOLPH	6/7/2013	SR 2077	SR 1929	SPENCER RD	0.38	REASSIGNMENT VIA TIP	MAP F, SEGMENT
R-2606B	RANDOLPH	6/7/2013		SR 1931	BANNER WHITEHEAD RD	0.31	SYSTEM ADDITION - EXISTING VIA TIP	MAP B, SEGMENT
R-2606B	RANDOLPH	6/7/2013		SR 1944	BRANSON DAVIS RD	0.44	SYSTEM ADDITION - EXISTING VIA TIP	MAP C, SEGMENT
R-2606B	RANDOLPH	6/7/2013		US 311	US 311	0.47	SYSTEM ADDITION - EXISTING VIA TIP	MAP D, SEGMENT
R-2606B	RANDOLPH	6/7/2013		SR 1941	WALL BROTHERS RD	0.23	SYSTEM ADDITION - EXISTING VIA TIP	MAP D, SEGMENT
R-2606B	RANDOLPH	6/7/2013		SR 1518	PLAINFIELD RD	0.29	SYSTEM ADDITION - EXISTING VIA TIP	MAP E, SEGMENT
R-2606B	RANDOLPH	6/7/2013		SR 1511	HEATH DAIRY RD	0.42	SYSTEM ADDITION - EXISTING VIA TIP	MAP E, SEGMENT
R-2606B	RANDOLPH	6/7/2013	SR 9002		FUTURE I-74	6.85	SYSTEM ADDITION - NEW VIA TIP	MAP A, SEGMENT
R-2606B	RANDOLPH	6/7/2013	SR 2066		SERVICE RD	0.91	SYSTEM ADDITION - NEW VIA TIP	MAP B, SEGMENT

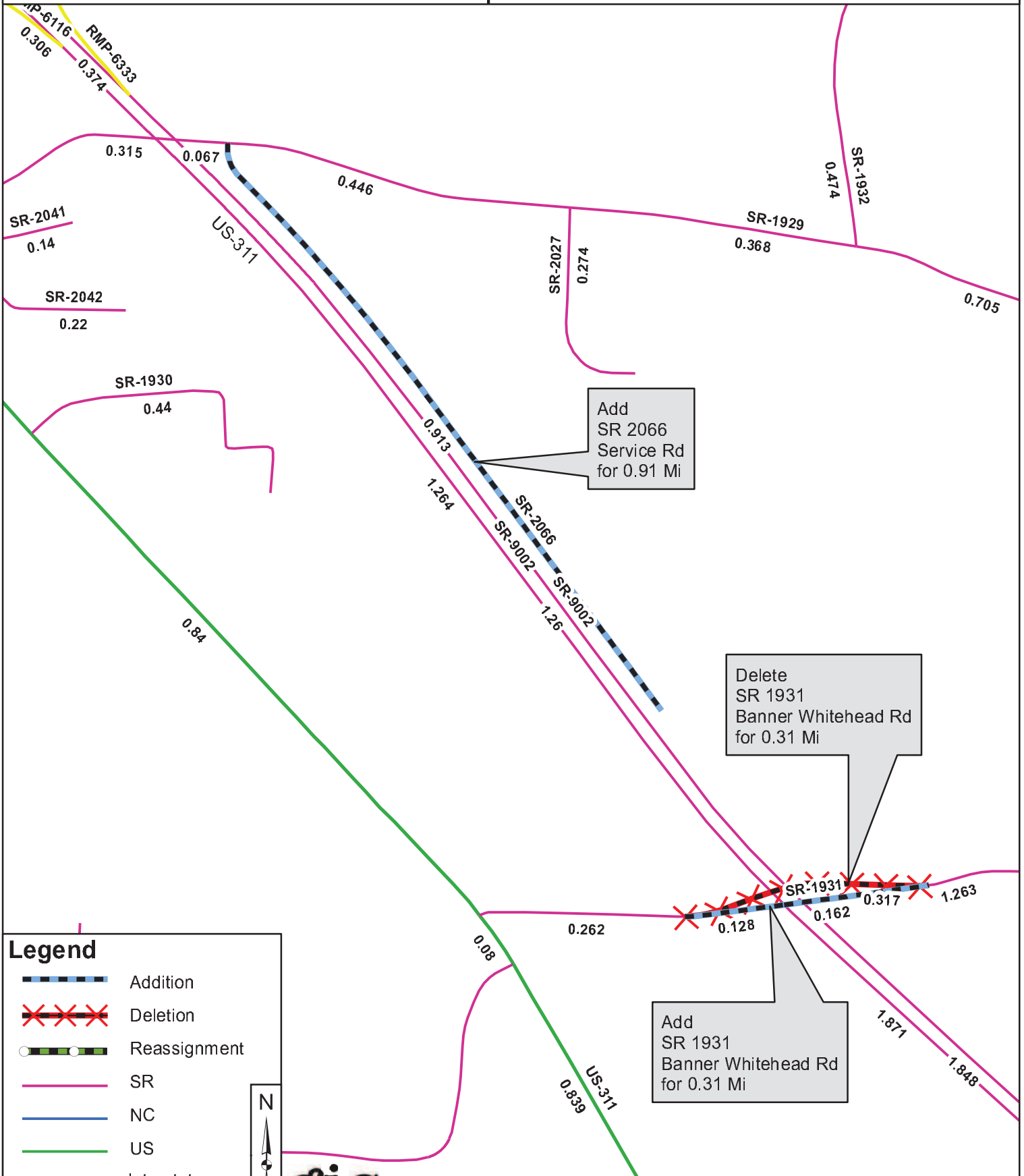
TIP	COUNTY	APPROVAL DATE	NEW ROUTE	EXISTING ROUTE	STREET NAME	LENGTH (miles)	TYPE OF CHANGE	REMARKS (See Attached Map)
R-2606B	RANDOLPH	6/7/2013	SR 2067		SERVICE RD	0.59	SYSTEM ADDITION - NEW VIA TIP	MAP C, SEGMENT
R-2606B	RANDOLPH	6/7/2013	SR 2068		SERVICE RD	0.35	SYSTEM ADDITION - NEW VIA TIP	MAP E, SEGMENT
R-2606B	RANDOLPH	6/7/2013	SR 2069		SERVICE RD	0.46	SYSTEM ADDITION - NEW VIA TIP	MAP E, SEGMENT
R-2606B	RANDOLPH	6/7/2013	SR 2070		SERVICE RD	0.19	SYSTEM ADDITION - NEW VIA TIP	MAP E, SEGMENT
R-2606B	RANDOLPH	6/7/2013	SR 2071		SERVICE RD	0.18	SYSTEM ADDITION - NEW VIA TIP	MAP E, SEGMENT
R-2606B	RANDOLPH	6/7/2013		SR 1931	BANNER WHITEHEAD RD	0.31	SYSTEM DELETION VIA TIP	MAP B, SEGMENT
R-2606B	RANDOLPH	6/7/2013		SR 1945	NELSON PARK RD	0.07	SYSTEM DELETION VIA TIP	MAP C, SEGMENT
R-2606B	RANDOLPH	6/7/2013		SR 1944	BRANSON DAVIS RD	0.44	SYSTEM DELETION VIA TIP	MAP C, SEGMENT
R-2606B	RANDOLPH	6/7/2013		SR 1941	WALL BROTHERS RD	0.33	SYSTEM DELETION VIA TIP	MAP D, SEGMENT
R-2606B	RANDOLPH	6/7/2013		US 311	US 311	0.48	SYSTEM DELETION VIA TIP	MAP D, SEGMENT
R-2606B	RANDOLPH	6/7/2013		SR 1518	PLAINFIELD RD	0.30	SYSTEM DELETION VIA TIP	MAP E, SEGMENT

TIP	COUNTY	APPROVAL DATE	NEW ROUTE	EXISTING ROUTE	STREET NAME	LENGTH (miles)	TYPE OF CHANGE	REMARKS (See Attached Map)
R-2606B	RANDOLPH	6/7/2013		SR 1513	OLD COURTHOUSE RD	0.13	SYSTEM DELETION VIA TIP	MAP E, SEGMENT
R-2606B	RANDOLPH	6/7/2013		SR 1511	HEATH DAIRY RD	0.44	SYSTEM DELETION VIA TIP	MAP E, SEGMENT
R-2606B	RANDOLPH	6/7/2013		SR 1929	SPENCER RD	0.09	SYSTEM DELETION VIA TIP	MAP F, SEGMENT

Map A



Map B

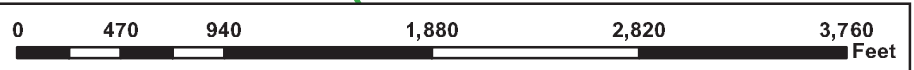


Legend

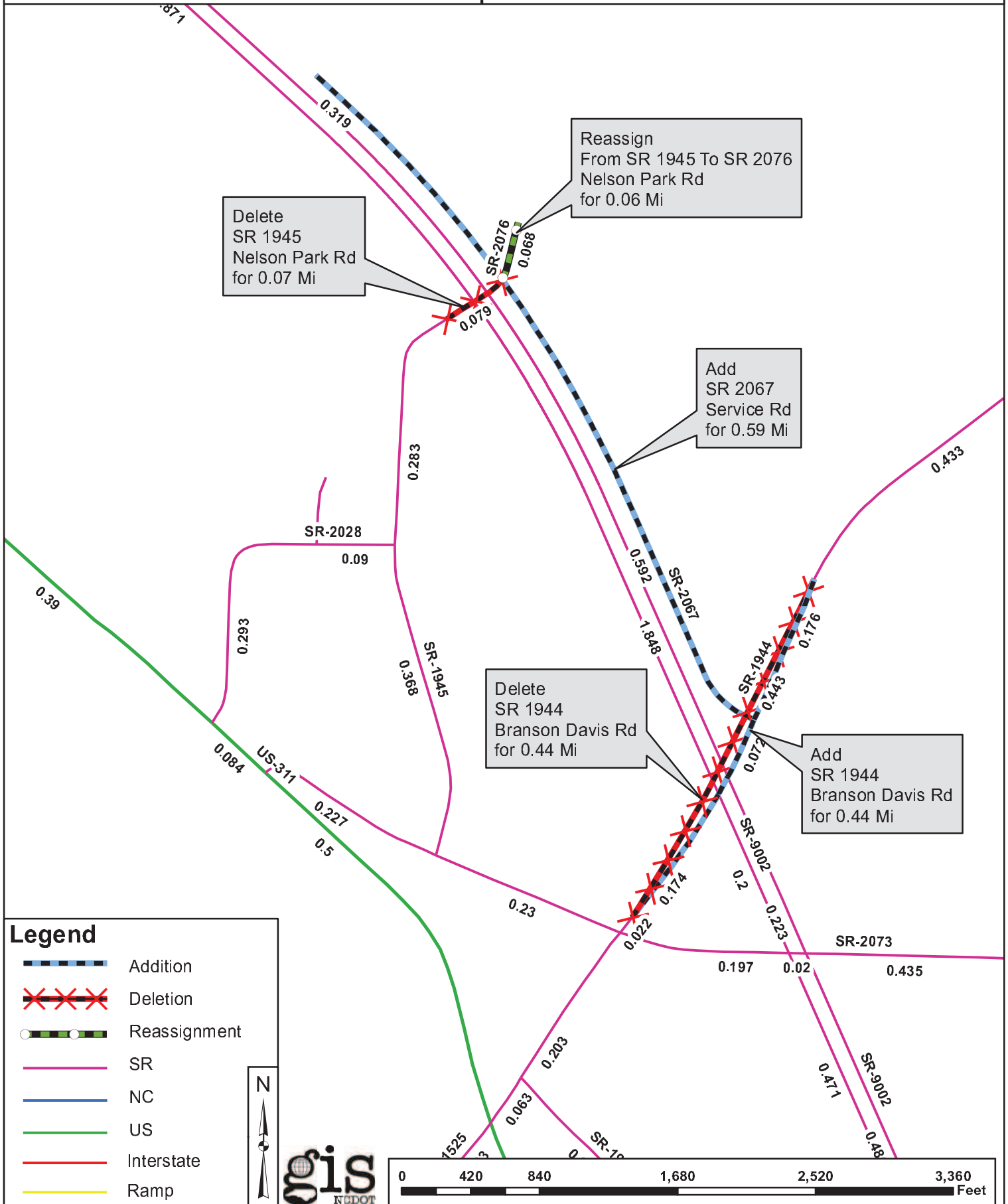
- Addition
- Deletion
- Reassignment
- SR
- NC
- US
- Interstate
- Ramp

N

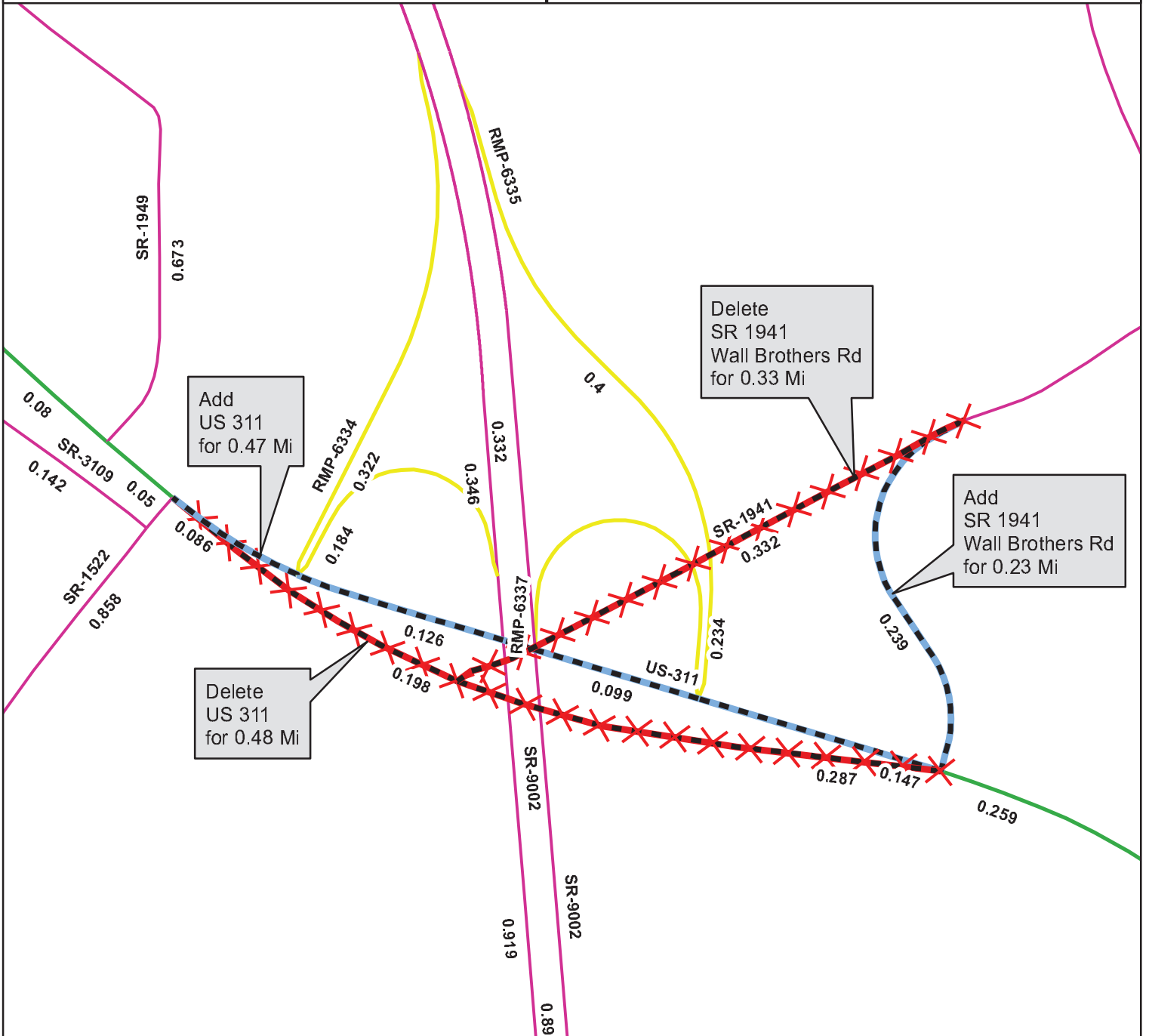
gis
NCDOT











Map C



Map D



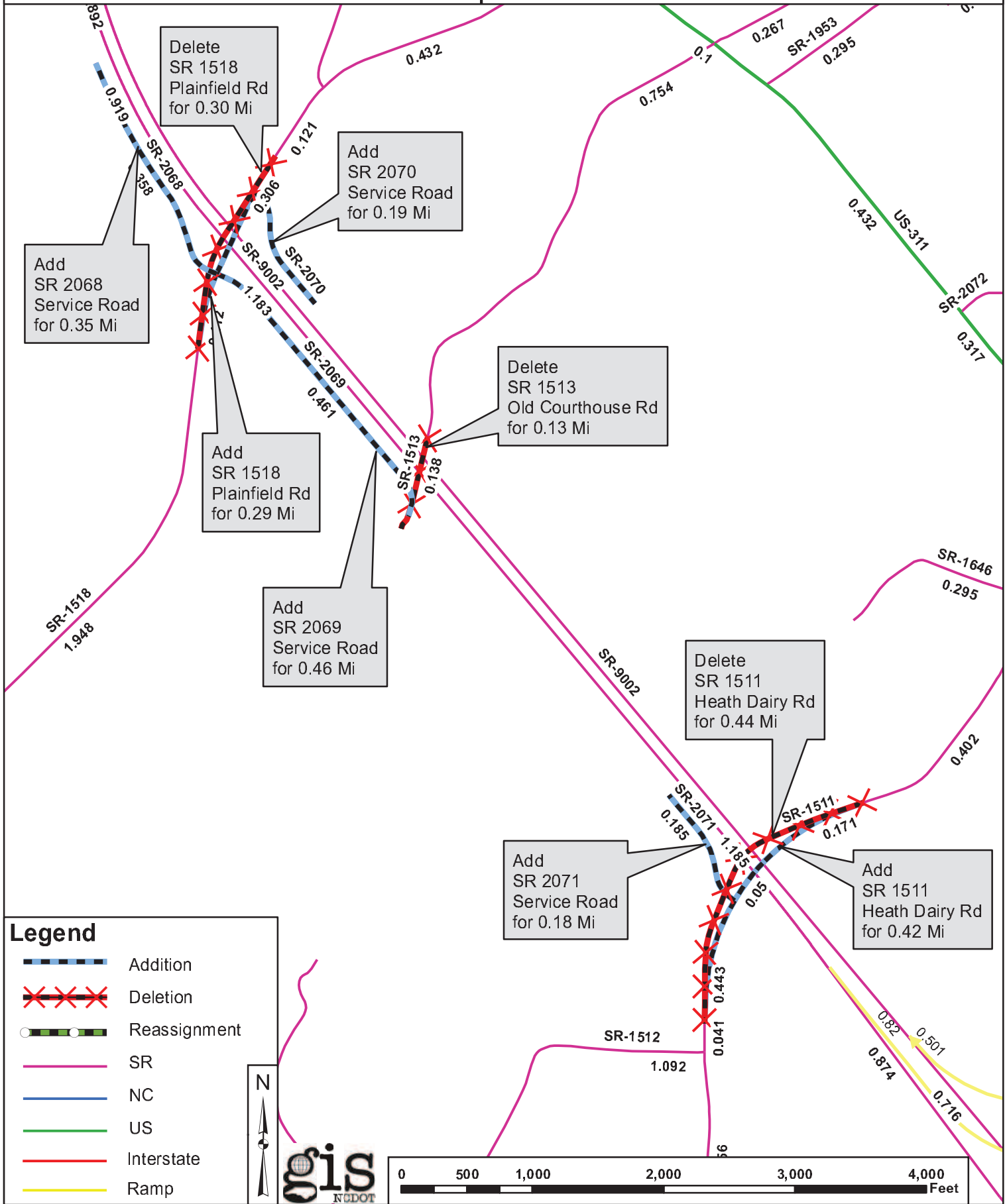
Legend

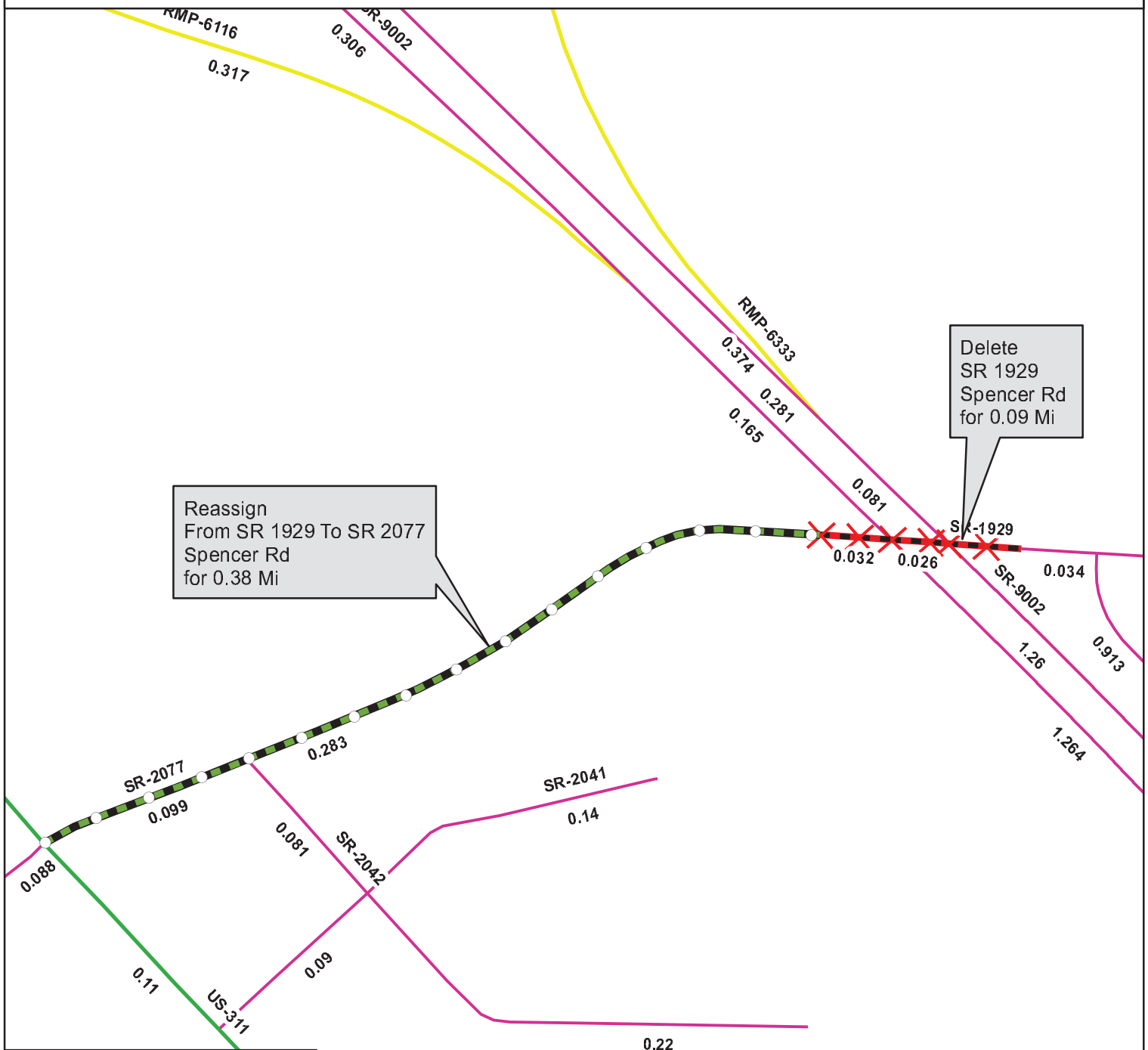
-  Addition
-  Deletion
-  Reassignment
-  SR
-  NC
-  US
-  Interstate
-  Ramp

N



Map E





Legend

- Addition
- Deletion
- Reassignment
- SR
- NC
- US
- Interstate
- Ramp

0.21

