



STATE OF NORTH CAROLINA  
DEPARTMENT OF TRANSPORTATION

PATRICK MCCRORY  
GOVERNOR

October 24, 2016

NICHOLAS J. TENNYSON  
SECRETARY

**MEMORANDUM TO:** Mr. J. B. (Joel) Setzer, P.E.  
Division Engineer  
Division 14

**FROM:** Mr. John C. Farley, GISP, CPM  
Manager  
Geographic Information Systems Unit

**SUBJECT:** 2016 District 3 Road System Changes

The GIS Unit's Data Conversion Group has been authorized to make the changes indicated below to the state road system. We request that you update the related maps and files in your offices and install appropriate road number signs, if necessary. If our system changes do not conform to the actual conditions in the field, please return this memorandum with recommendations.

Document Number	County	Approval Date
R-2408B	MACON	11/15/2012

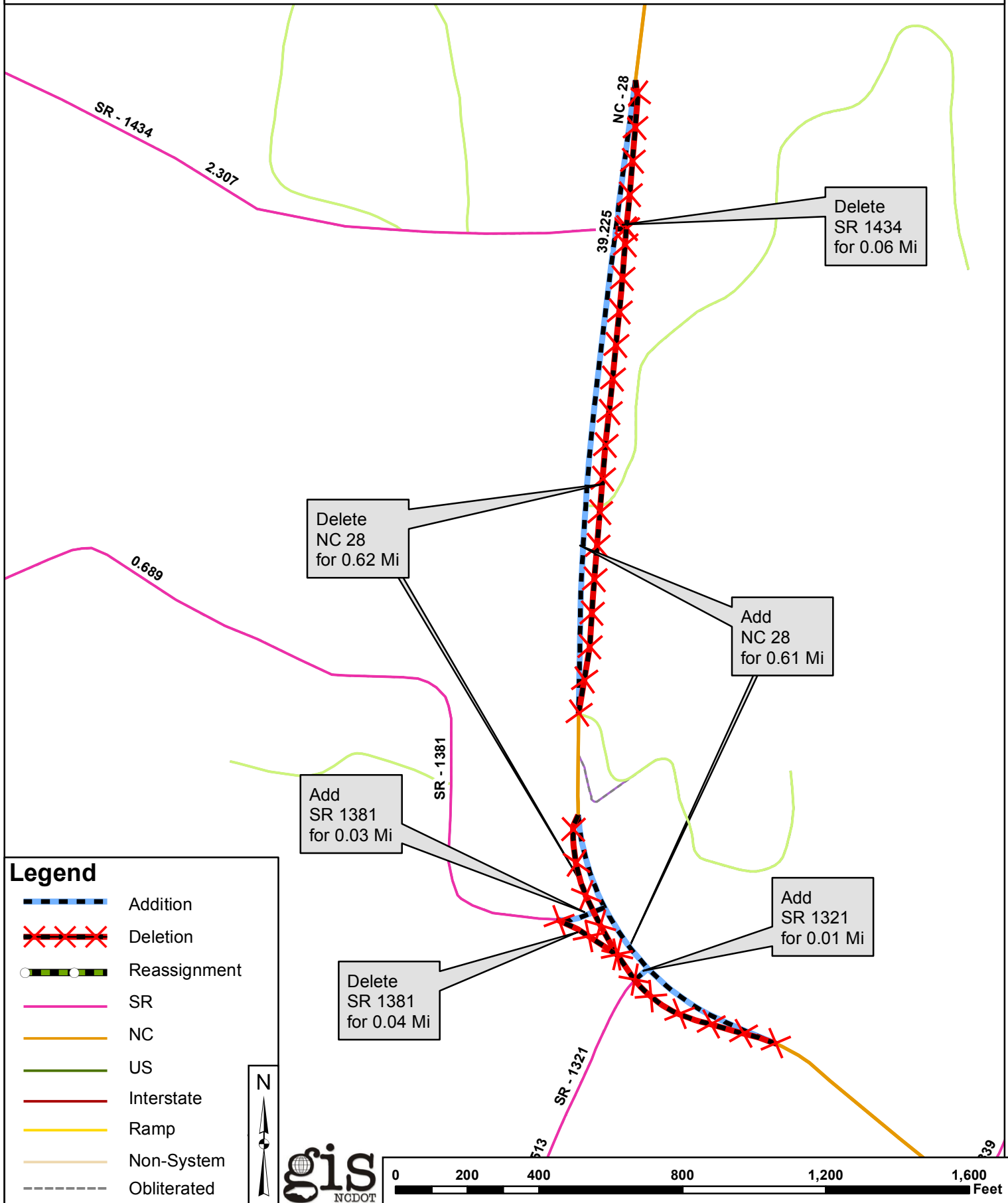
Questions or comments about changes should be referred to the GIS Help Desk at [GISHelp@ncdot.gov](mailto:GISHelp@ncdot.gov).  
Thank you for your assistance.

JCF

cc: BSIP  
Bridge Maintenance  
Division Right of Way  
IMG  
Pavement Management  
Permit Unit  
State Road Maintenance  
Traffic Engineering  
Traffic Surveys

# 2016 ROAD SYSTEM CHANGES

TIP	COUNTY	APPROVAL DATE	NEW ROUTE	EXISTING ROUTE	STREET NAME	LENGTH (miles)	TYPE OF CHANGE	REMARKS (See Attached Maps)
R-2408B	MACON	11/15/2012		NC 28		0.61	SYSTEM ADDITION - EXISTING VIA TIP	MAP A, SEGMENT
R-2408B	MACON	11/15/2012		SR 1381		0.03	SYSTEM ADDITION - EXISTING VIA TIP	MAP A, SEGMENT
R-2408B	MACON	11/15/2012		SR 1321		0.01	SYSTEM ADDITION - EXISTING VIA TIP	MAP A, SEGMENT
R-2408B	MACON	11/15/2012		SR 1337		0.07	SYSTEM ADDITION - EXISTING VIA TIP	MAP B, SEGMENT
R-2408B	MACON	11/15/2012		SR 1372		0.05	SYSTEM ADDITION - EXISTING VIA TIP	MAP C, SEGMENT
R-2408B	MACON	11/15/2012		NC 28		0.62	SYSTEM DELETION VIA TIP	MAP A, SEGMENT
R-2408B	MACON	11/15/2012		SR 1434		0.06	SYSTEM DELETION VIA TIP	MAP A, SEGMENT
R-2408B	MACON	11/15/2012		SR 1381		0.04	SYSTEM DELETION VIA TIP	MAP A, SEGMENT
R-2408B	MACON	11/15/2012		SR 1337		0.08	SYSTEM DELETION VIA TIP	MAP B, SEGMENT
R-2408B	MACON	11/15/2012		SR 1372		0.06	SYSTEM DELETION VIA TIP	MAP C, SEGMENT



Delete SR 1434 for 0.06 Mi

Delete NC 28 for 0.62 Mi

Add NC 28 for 0.61 Mi

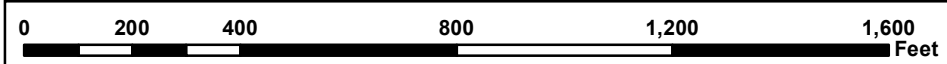
Add SR 1381 for 0.03 Mi

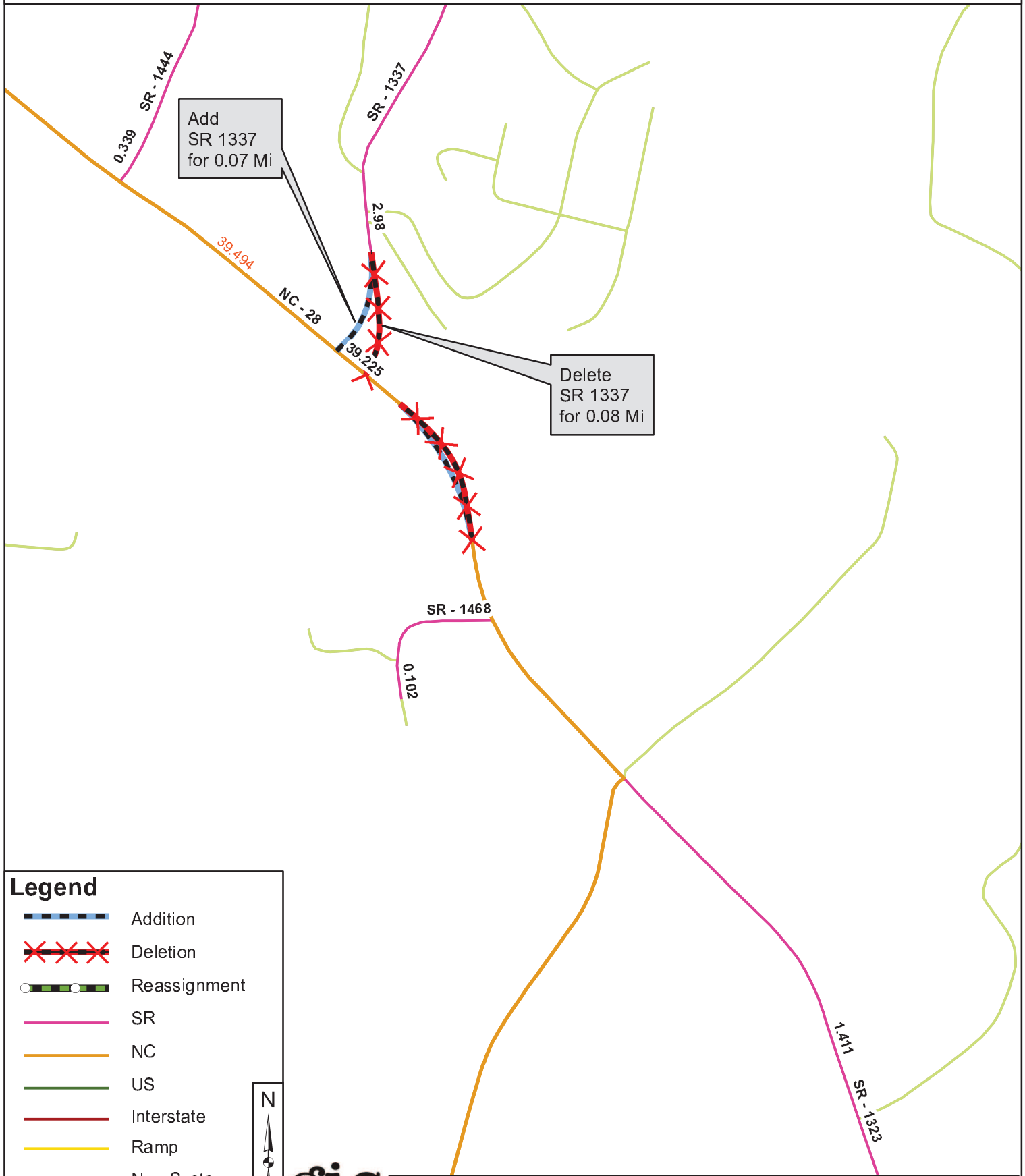
Add SR 1321 for 0.01 Mi

Delete SR 1381 for 0.04 Mi

**Legend**

- Addition
- Deletion
- Reassignment
- SR
- NC
- US
- Interstate
- Ramp
- Non-System
- Obliterated





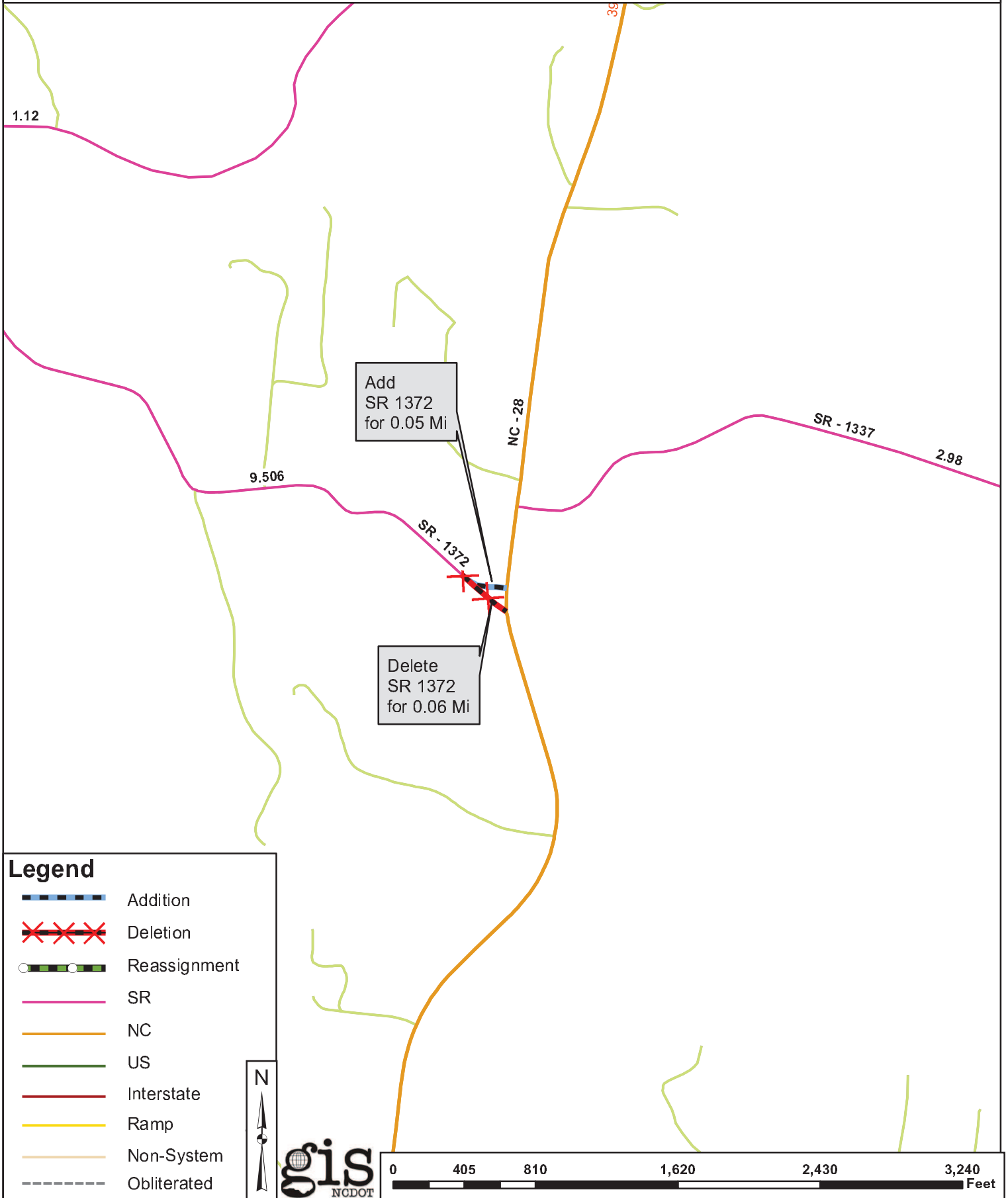
Add  
SR 1337  
for 0.07 Mi

Delete  
SR 1337  
for 0.08 Mi

**Legend**

-  Addition
-  Deletion
-  Reassignment
-  SR
-  NC
-  US
-  Interstate
-  Ramp
-  Non-System
-  Obliterated





**Legend**

- Addition
- Deletion
- Reassignment
- SR
- NC
- US
- Interstate
- Ramp
- Non-System
- Obliterated

gis  
NCDOT

