



STATE OF NORTH CAROLINA
DEPARTMENT OF TRANSPORTATION

BEVERLY EAVES PERDUE
GOVERNOR

Friday, November 09, 2012

EUGENE A. CONTI, JR.
SECRETARY

MEMORANDUM TO: Mr. Robert W. Lewis, PE
Division Engineer
Division 4

FROM: John C. Farley, Manager
Geographic Information Systems Unit

SUBJECT: 2012 District 3 Road System Changes

The Data Conversion Group has been authorized to make the following changes to the state road system as indicated below. We request that you make similar changes to the related maps and files in your Division and District offices, and install appropriate road number signs if necessary. we have updated our records accordingly. If our system changes do not conform to the actual conditions in the field, please return this memorandum with recommendations.

PETITION	County	Approval Date
WAYNE_2012_11_50120	WAYNE	11/8/2012

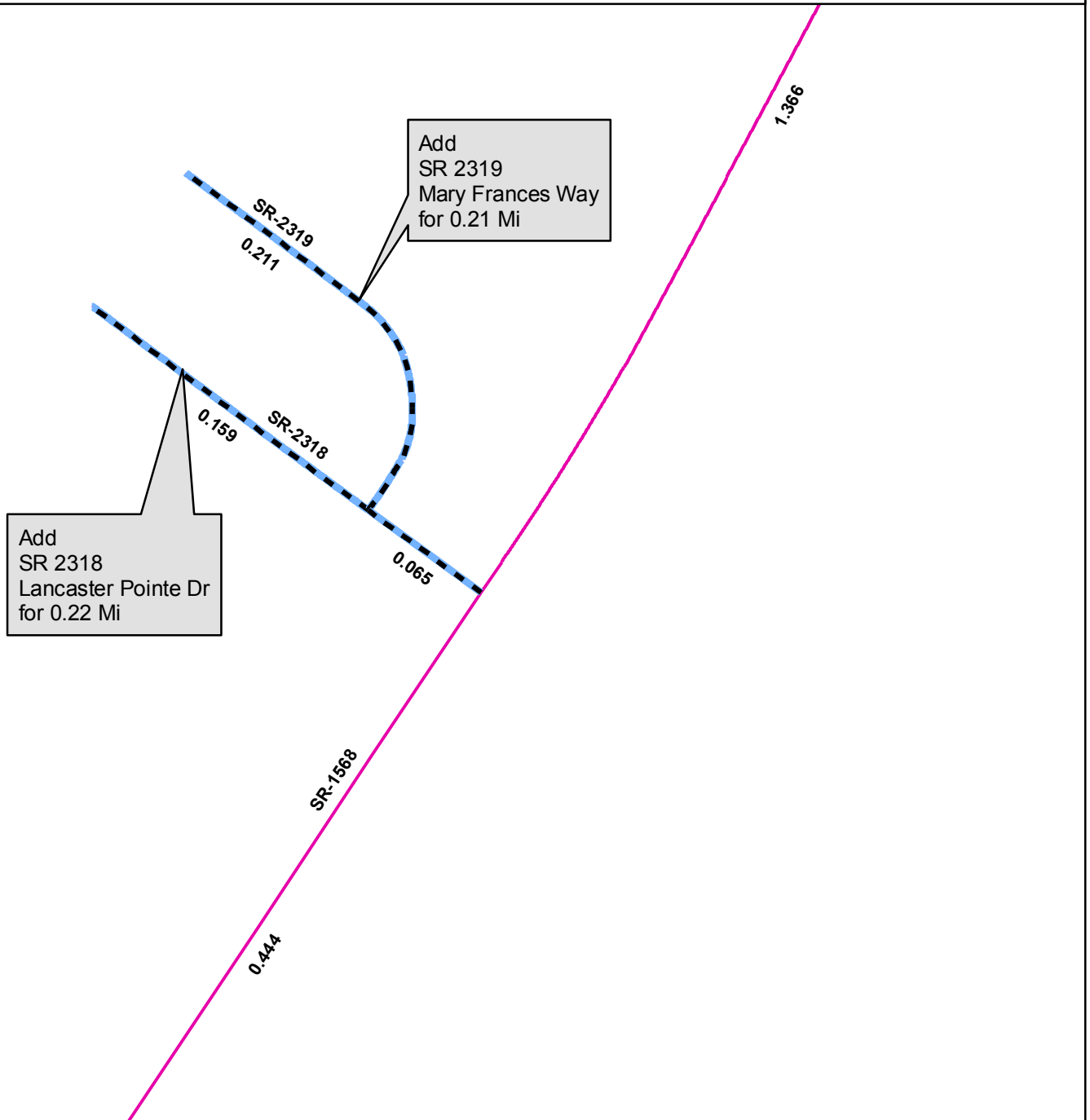
Inquiries about changes should be referred to the GIS Help Desk at (919) 707-2152.
Thank you for your assistance.

JCF

- cc: BSIP
- Bridge Maintenance
- Division Right of Way
- IMG
- Pavement Management
- Permit Unit
- State Road Maintenance
- Traffic Engineering
- Traffic Surveys

2012 ROAD SYSTEM CHANGES









PETITION	COUNTY	APPROVAL DATE	ROUTE NUMBER	PORTION REASSIGNED	STREET NAME	LENGTH (miles)	TYPE OF CHANGE	REMARKS (See Attached Map)
WAYNE_2012_11_50120	WAYNE	11/8/2012	SR 2319		MARY FRANCES WAY	0.21	SYSTEM ADDITION VIA PETITION	
WAYNE_2012_11_50120	WAYNE	11/8/2012	SR 2318		LANCASTER POINTE DR	0.22	SYSTEM ADDITION VIA PETITION	



Add
SR 2318
Lancaster Pointe Dr
for 0.22 Mi

Add
SR 2319
Mary Frances Way
for 0.21 Mi

Legend

-  Addition
-  Deletion
-  Reassignment
-  SR
-  NC
-  US
-  Interstate
-  Ramp

N

gis
NCDOT

0 210 420 840 1,260 1,680 Feet