



STATE OF NORTH CAROLINA
DEPARTMENT OF TRANSPORTATION

BEVERLY EAVES PERDUE
GOVERNOR

Tuesday, November 13, 2012

EUGENE A. CONTI, JR.
SECRETARY

MEMORANDUM TO: Ms. Karen E. Fussel, PE
Division Engineer
Division 3

FROM: John C. Farley, Manager
Geographic Information Systems Unit

SUBJECT: 2012 District 1 Road System Changes

The Data Conversion Group has been authorized to make the following changes to the state road system as indicated below. We request that you make similar changes to the related maps and files in your Division and District offices, and install appropriate road number signs if necessary. we have updated our records accordingly. If our system changes do not conform to the actual conditions in the field, please return this memorandum with recommendations.

| PETITION | County | Approval Date |
|----------------------|--------|---------------|
| ONSLOW_2012_11_50118 | ONSLOW | 11/8/2012 |

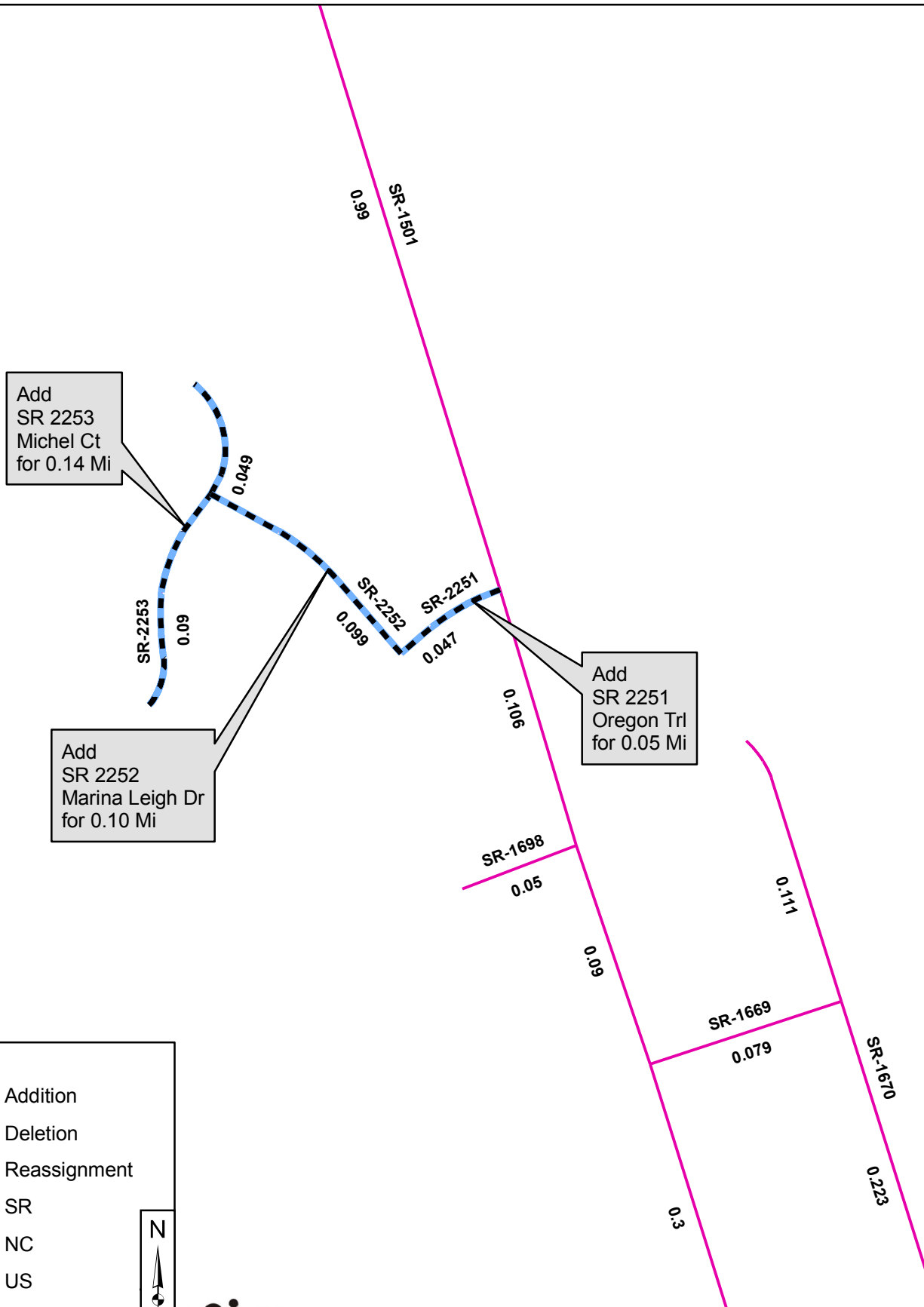
Inquiries about changes should be referred to the GIS Help Desk at (919) 707-2152.
Thank you for your assistance.

JCF









- cc: BSIP
- Bridge Maintenance
- Division Right of Way
- IMG
- Pavement Management
- Permit Unit
- State Road Maintenance
- Traffic Engineering
- Traffic Surveys

2012 ROAD SYSTEM CHANGES

| PETITION | COUNTY | APPROVAL DATE | ROUTE NUMBER | PORTION REASSIGNED | STREET NAME | LENGTH (miles) | TYPE OF CHANGE | REMARKS (See Attached Map) |
|----------------------|---------------|--------------------------|-------------------------|-------------------------------|------------------------|---------------------------|------------------------------------|---------------------------------------|
| ONSLOW_2012_11_50118 | ONSLOW | 11/8/2012 | SR 2253 | | MICHEL CT | 0.14 | SYSTEM ADDITION VIA PETITION | |
| ONSLOW_2012_11_50118 | ONSLOW | 11/8/2012 | SR 2252 | | MARINA LEIGH DR | 0.10 | SYSTEM ADDITION VIA PETITION | |
| ONSLOW_2012_11_50118 | ONSLOW | 11/8/2012 | SR 2251 | | OREGON TRL | 0.05 | SYSTEM ADDITION VIA PETITION | |



Legend

-  Addition
-  Deletion
-  Reassignment
-  SR
-  NC
-  US
-  Interstate
-  Ramp

