



STATE OF NORTH CAROLINA
DEPARTMENT OF TRANSPORTATION

BEVERLY EAVES PERDUE
GOVERNOR

Wednesday, September 19, 2012

EUGENE A. CONTI, JR.
SECRETARY

MEMORANDUM TO: Mr. J. Wally Bowman, PE
Division Engineer
Division 5

FROM: John C. Farley, Manager
Geographic Information Systems Unit

SUBJECT: 2012 District 1 Road System Changes

The Data Conversion Group has been authorized to make the following changes to the state road system as indicated below. We request that you make similar changes to the related maps and files in your Division and District offices, and install appropriate road number signs if necessary. We have updated our records accordingly. If our system changes do not conform to the actual conditions in the field, please return this memorandum with recommendations.

Document Number	County	Approval Date
R-2635C	WAKE	8/1/2012

Inquiries about changes should be referred to the GIS Help Desk at (919) 707-2152.
Thank you for your assistance.

JCF

cc: BSIP
Bridge Maintenance
Division Right of Way
IMG
Pavement Management
Permit Unit
State Road Maintenance
Traffic Engineering
Traffic Surveys

MAILING ADDRESS:
NC DEPARTMENT OF TRANSPORTATION
GEOGRAPHIC INFORMATION SYSTEMS
1521 MAIL SERVICE CENTER
RALEIGH NC 27699-1521

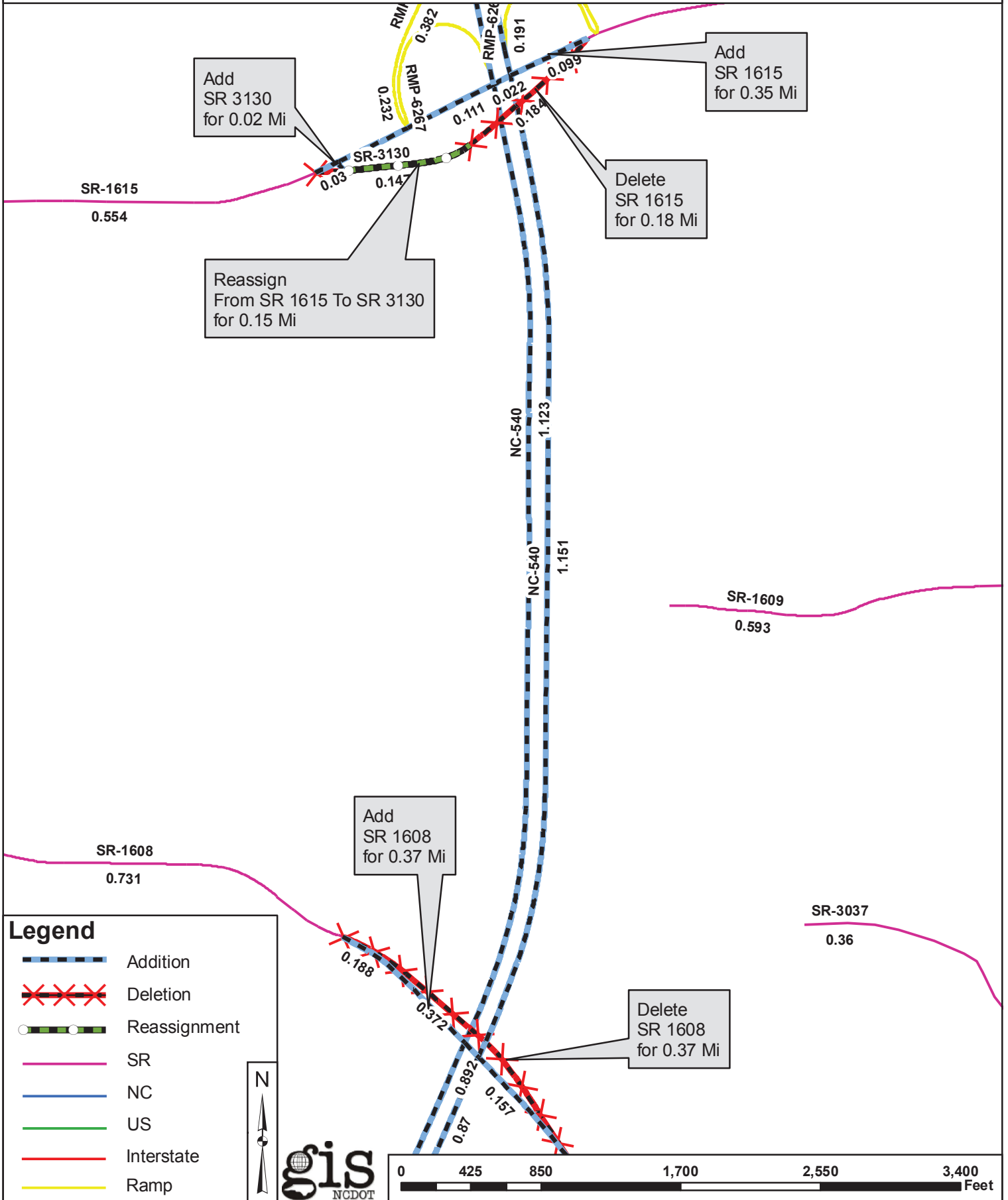
gis
NCDOT
WWW.NCDOT.ORG/IT/GIS

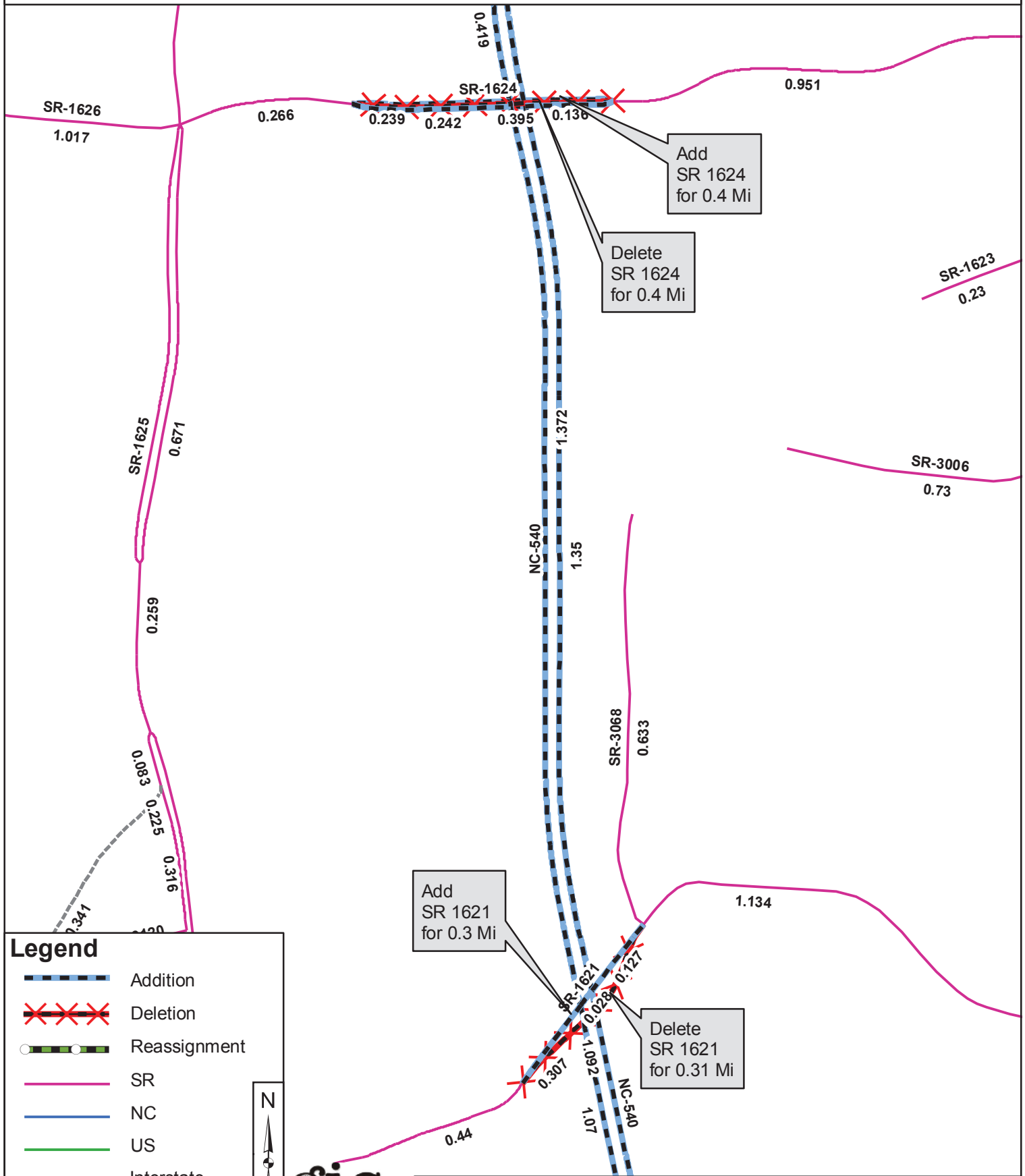
Delivery Address:
41 01 CAPITAL BLVD.
RALEIGH, NC 27604
PHONE: (919) 707-2152
FAX: (919) 707-2214

2012 ROAD SYSTEM CHANGES

TIP	COUNTY	APPROVAL DATE	NEW ROUTE	EXISTING ROUTE	STREET NAME	LENGTH (miles)	TYPE OF CHANGE	REMARKS (See Attached Map)
R-2635C	WAKE	8/1/2012	SR 3129	SR 1600		0.51	REASSIGNMENT VIA TIP	MAP A, SEGMENT
R-2635C	WAKE	8/1/2012	SR 3130	SR 1615		0.15	REASSIGNMENT VIA TIP	MAP B, SEGMENT
R-2635C	WAKE	8/1/2012		NC 540		7.31	SYSTEM ADDITION - EXISTING VIA TIP	MAP A, SEGMENT
R-2635C	WAKE	8/1/2012		SR 1601		0.36	SYSTEM ADDITION - EXISTING VIA TIP	MAP A, SEGMENT
R-2635C	WAKE	8/1/2012		SR 1615		0.35	SYSTEM ADDITION - EXISTING VIA TIP	MAP B, SEGMENT
R-2635C	WAKE	8/1/2012		SR 1608		0.37	SYSTEM ADDITION - EXISTING VIA TIP	MAP B, SEGMENT
R-2635C	WAKE	8/1/2012		SR 1621		0.30	SYSTEM ADDITION - EXISTING VIA TIP	MAP C, SEGMENT
R-2635C	WAKE	8/1/2012		SR 1624		0.40	SYSTEM ADDITION - EXISTING VIA TIP	MAP C, SEGMENT
R-2635C	WAKE	8/1/2012	SR 3129			0.29	SYSTEM ADDITION - NEW VIA TIP	MAP A, SEGMENT
R-2635C	WAKE	8/1/2012	SR 3130			0.02	SYSTEM ADDITION - NEW VIA TIP	MAP B, SEGMENT

TIP	COUNTY	APPROVAL DATE	NEW ROUTE	EXISTING ROUTE	STREET NAME	LENGTH (miles)	TYPE OF CHANGE	REMARKS (See Attached Map)
R-2635C	WAKE	8/1/2012		SR 1601		0.38	SYSTEM DELETION VIA TIP	MAP A, SEGMENT
R-2635C	WAKE	8/1/2012		SR 1600		0.20	SYSTEM DELETION VIA TIP	MAP A, SEGMENT
R-2635C	WAKE	8/1/2012		SR 1608		0.37	SYSTEM DELETION VIA TIP	MAP B, SEGMENT
R-2635C	WAKE	8/1/2012		SR 1615		0.18	SYSTEM DELETION VIA TIP	MAP B, SEGMENT
R-2635C	WAKE	8/1/2012		SR 1624		0.40	SYSTEM DELETION VIA TIP	MAP C, SEGMENT
R-2635C	WAKE	8/1/2012		SR 1621		0.31	SYSTEM DELETION VIA TIP	MAP C, SEGMENT





Legend

- Addition
- Deletion
- Reassignment
- SR
- NC
- US
- Interstate
- Ramp

N

gis
NCDOT

