



STATE OF NORTH CAROLINA
DEPARTMENT OF TRANSPORTATION

BEVERLY EAVES PERDUE
GOVERNOR

Tuesday, July 17, 2012

EUGENE A. CONTI, JR.
SECRETARY

MEMORANDUM TO: Mr. Jay Swain, PE
Division Engineer
Division 13

FROM: John C. Farley, Manager
Geographic Information Systems Unit

SUBJECT: 2012 District 1 Road System Changes

The Data Conversion Group has been authorized to make the following changes to the state road system as indicated below. We request that you make similar changes to the related maps and files in your Division and District offices, and install appropriate road number signs if necessary. We have updated our records accordingly. If our system changes do not conform to the actual conditions in the field, please return this memorandum with recommendations.

PETITION	County	Approval Date
BURKE_2012_07_50049	BURKE	7/12/2012

Inquiries about changes should be referred to the GIS Help Desk at (919) 707-2152.
Thank you for your assistance.

JCF

cc: BSIP
Bridge Maintenance
Division Right of Way
IMG
Pavement Management
Permit Unit
State Road Maintenance
Traffic Engineering
Traffic Surveys

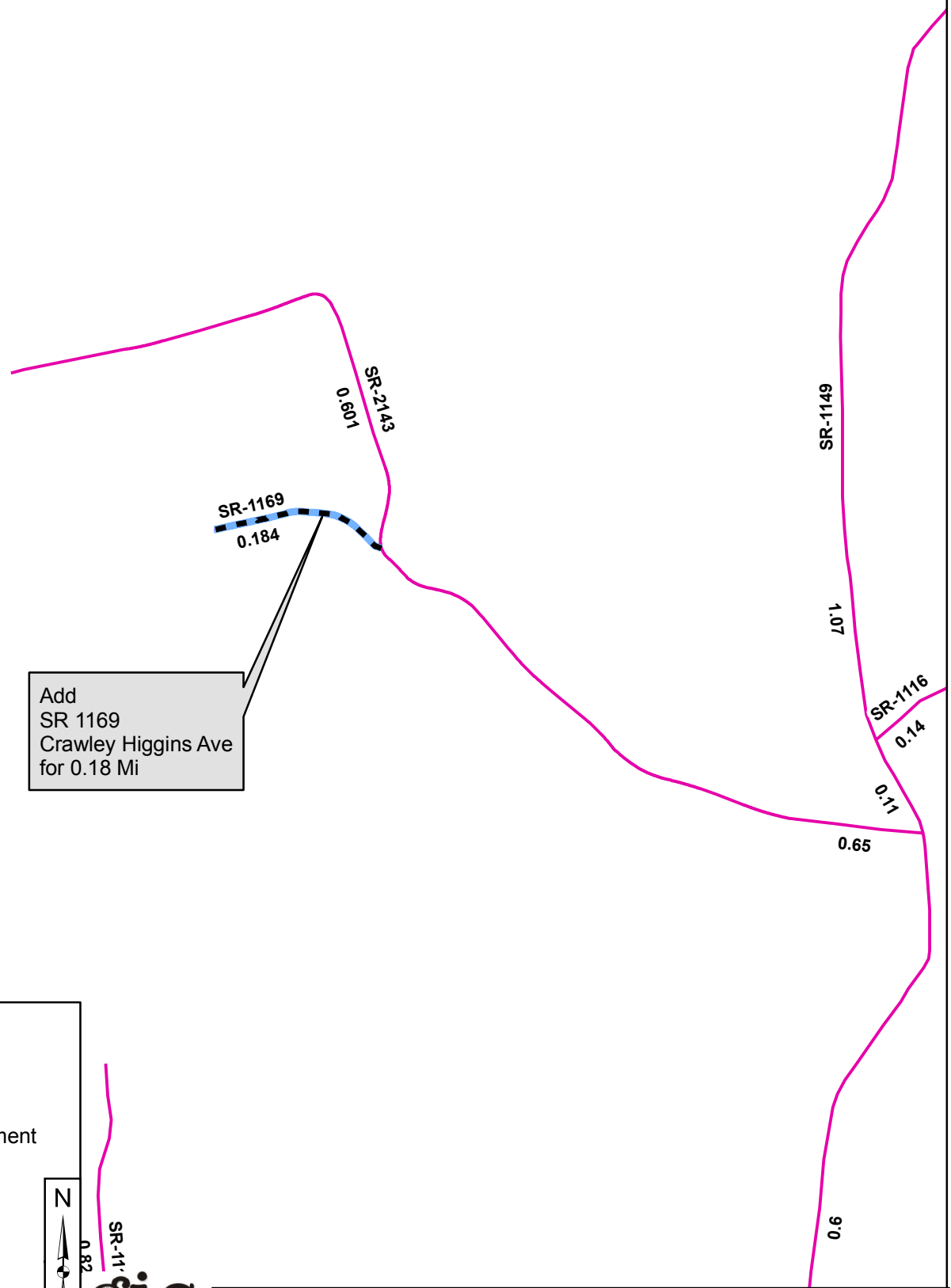
MAILING ADDRESS:
NC DEPARTMENT OF TRANSPORTATION
GEOGRAPHIC INFORMATION SYSTEMS
1521 MAIL SERVICE CENTER
RALEIGH NC 27699-1521

gis
NCDOT
WWW.NCDOT.ORG/IT/GIS

Delivery Address:
4101 CAPITAL BLVD.
RALEIGH, NC 27604
PHONE: (919) 707-2152
FAX: (919) 707-2214









2012 ROAD SYSTEM CHANGES

PETITION	COUNTY	APPROVAL DATE	ROUTE NUMBER	PORTION REASSIGNED	STREET NAME	LENGTH (miles)	TYPE OF CHANGE	REMARKS (See Attached Map)
BURKE_2012_07_50049	BURKE	7/12/2012	SR 1169		CRAWLEY HIGGINS AVE EXT	0.18	SYSTEM ADDITION VIA PETITION	



Add
SR 1169
Crawley Higgins Ave
for 0.18 Mi

Legend

-  Addition
-  Deletion
-  Reassignment
-  SR
-  NC
-  US
-  Interstate
-  Ramp

