



STATE OF NORTH CAROLINA
DEPARTMENT OF TRANSPORTATION

BEVERLY EAVES PERDUE
GOVERNOR

Wednesday, June 13, 2012

EUGENE A. CONTI, JR.
SECRETARY

MEMORANDUM TO: Mr. S. Pat Ivey, PE
Division Engineer
Division 9

FROM: John C. Farley, Manager
Geographic Information Systems Unit

SUBJECT: 2012 District 2 Road System Changes

The Data Conversion Group has been authorized to make the following changes to the state road system as indicated below. We request that you make similar changes to the related maps and files in your Division and District offices, and install appropriate road number signs if necessary. We have updated our records accordingly. If our system changes do not conform to the actual conditions in the field, please return this memorandum with recommendations.

PETITION	County	Approval Date
STOKES_2012_06_50019	STOKES	6/7/2012

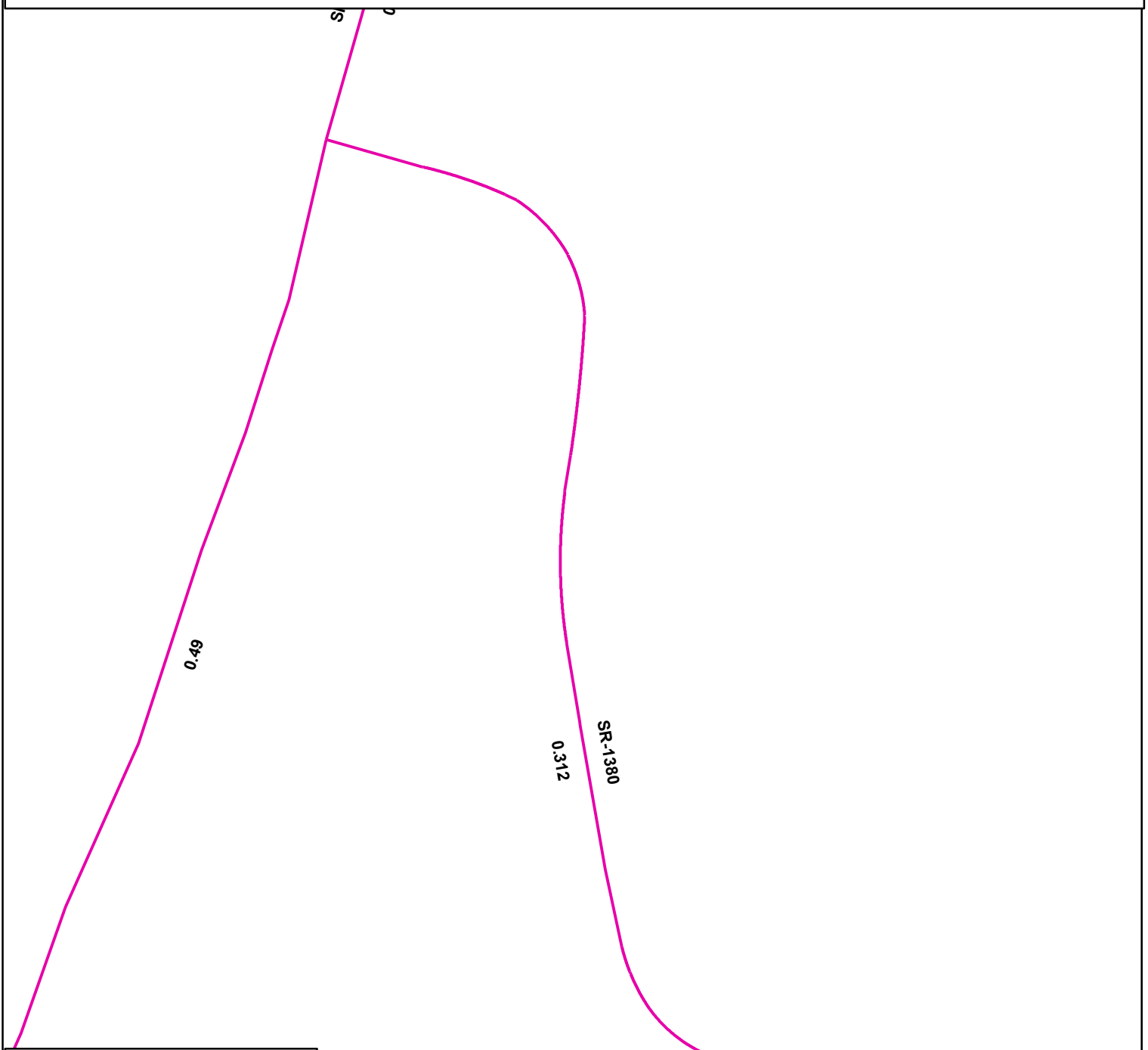
Inquiries about changes should be referred to the GIS Help Desk at (919) 707-2152.
Thank you for your assistance.

JCF









cc: BSIP
Bridge Maintenance
Division Right of Way
IMG
Pavement Management
Permit Unit
State Road Maintenance
Traffic Engineering
Traffic Surveys

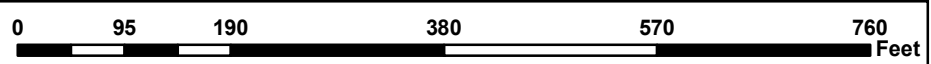
2012 ROAD SYSTEM CHANGES

PETITION	COUNTY	APPROVAL DATE	ROUTE NUMBER	PORTION REASSIGNED	STREET NAME	LENGTH (miles)	TYPE OF CHANGE	REMARKS (See Attached Map)
STOKES_2012_06_50019	STOKES	6/7/2012	SR 1389		EMERALD DR	0.05	SYSTEM ADDITION VIA PETITION	



Legend

-  Addition
-  Deletion
-  Reassignment
-  SR
-  NC
-  US
-  Interstate
-  Ramp



Add
SR 1382
Emerald Dr
for 0.05 Mi