



STATE OF NORTH CAROLINA
DEPARTMENT OF TRANSPORTATION

BEVERLY EAVES PERDUE
GOVERNOR

Tuesday, May 15, 2012

EUGENE A. CONTI, JR.
SECRETARY

MEMORANDUM TO: Mr. Mike Mills, PE
Division Engineer
Division 7

FROM: John C. Farley, Manager
Geographic Information Systems Unit

SUBJECT: 2012 District 2 Road System Changes

The Data Conversion Group has been authorized to make the following changes to the state road system as indicated below. We request that you make similar changes to the related maps and files in your Division and District offices, and install appropriate road number signs if necessary. we have updated our records accordingly. If our system changes do not conform to the actual conditions in the field, please return this memorandum with recommendations.

PETITION	County	Approval Date
GUILFORD_2012_05_49983	GUILFORD	5/3/2012

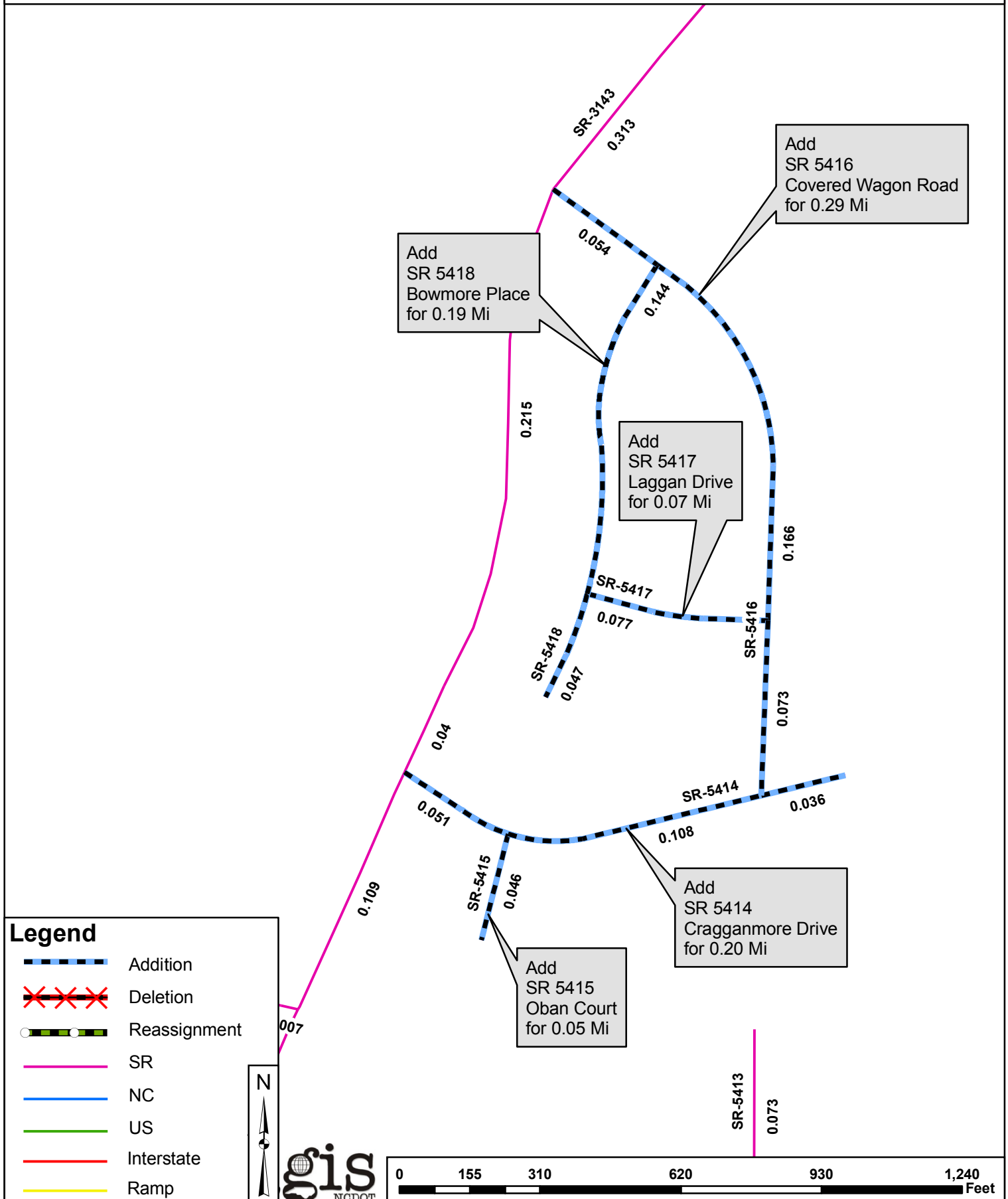
Inquiries about changes should be referred to the GIS Help Desk at (919) 707-2152.
Thank you for your assistance.

JCF








- cc: BSIP
- Bridge Maintenance
- Division Right of Way
- IMG
- Pavement Management
- Permit Unit
- State Road Maintenance
- Traffic Engineering
- Traffic Surveys

2012 ROAD SYSTEM CHANGES

PETITION	COUNTY	APPROVAL DATE	ROUTE NUMBER	PORTION REASSIGNED	STREET NAME	LENGTH (miles)	TYPE OF CHANGE	REMARKS (See Attached Map)
GUILFORD_2012_05_49983	GUILFORD	5/3/2012	SR 5418		BOWMORE PL	0.19	SYSTEM ADDITION VIA PETITION	
GUILFORD_2012_05_49983	GUILFORD	5/3/2012	SR 5417		LAGGAN DR	0.07	SYSTEM ADDITION VIA PETITION	
GUILFORD_2012_05_49983	GUILFORD	5/3/2012	SR 5416		COVERED WAGON RD	0.29	SYSTEM ADDITION VIA PETITION	
GUILFORD_2012_05_49983	GUILFORD	5/3/2012	SR 5415		OBAN CT	0.05	SYSTEM ADDITION VIA PETITION	
GUILFORD_2012_05_49983	GUILFORD	5/3/2012	SR 5414		CRAGGANMORE DR	0.20	SYSTEM ADDITION VIA PETITION	



Legend

-  Addition
-  Deletion
-  Reassignment
-  SR
-  NC
-  US
-  Interstate
-  Ramp

