



STATE OF NORTH CAROLINA  
DEPARTMENT OF TRANSPORTATION

BEVERLY EAVES PERDUE  
GOVERNOR

Tuesday, March 13, 2012

EUGENE A. CONTI, JR.  
SECRETARY

**MEMORANDUM TO:** Mr. Gregory W. Burns, PE  
Division Engineer  
Division 6

**FROM:** John C. Farley, Manager  
Geographic Information Systems Unit

**SUBJECT:** 2012 District 2 Road System Changes

The Data Conversion Group has been authorized to make the following changes to the state road system as indicated below. We request that you make similar changes to the related maps and files in your Division and District offices, and install appropriate road number signs if necessary. we have updated our records accordingly. If our system changes do not conform to the actual conditions in the field, please return this memorandum with recommendations.

PETITION	County	Approval Date
49935	CUMBERLAND	3/8/2012

Inquiries about changes should be referred to the GIS Help Desk at (919) 707-2152.  
Thank you for your assistance.

JCF

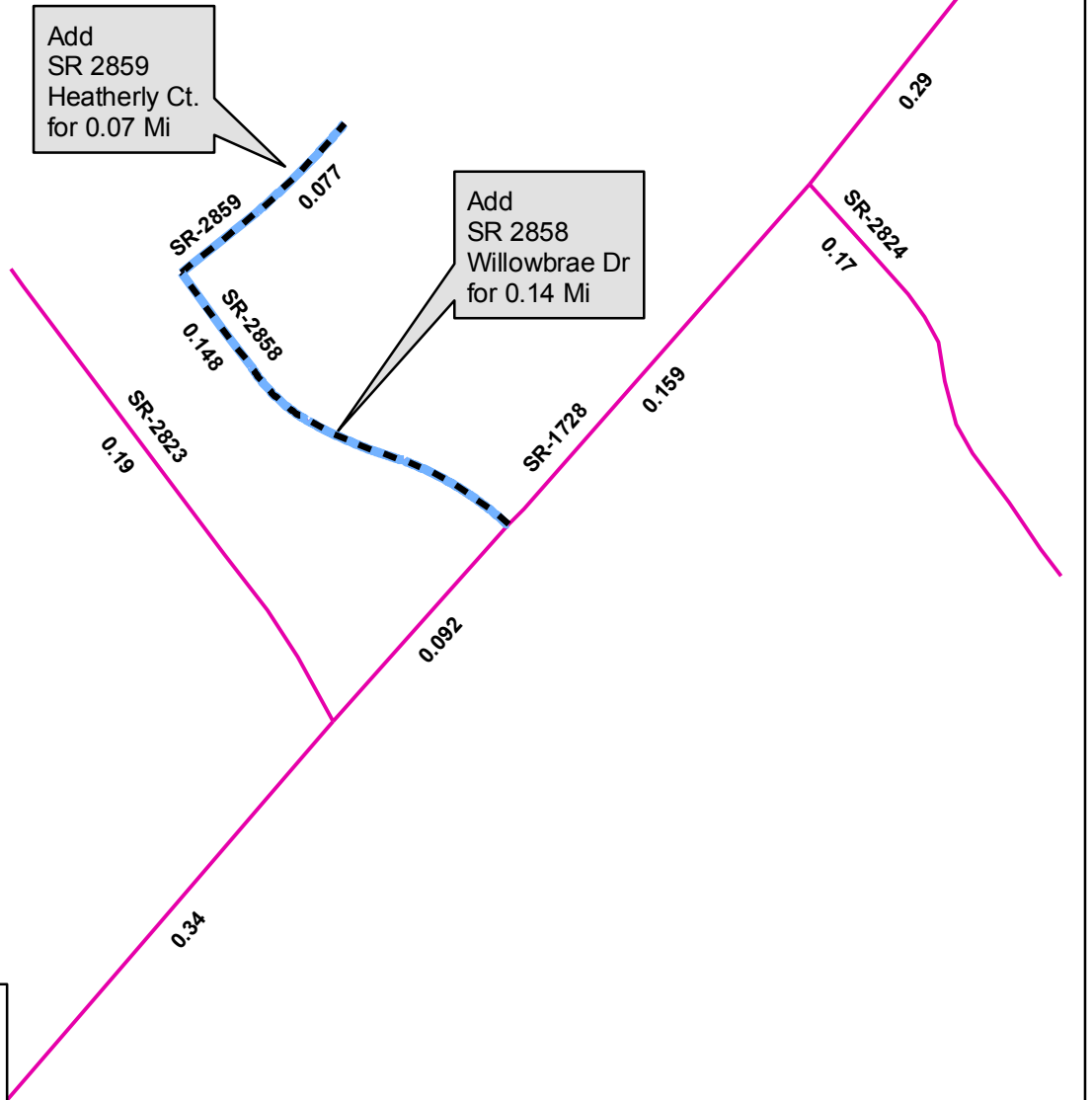
- cc: BSIP
- Bridge Maintenance
- Division Right of Way
- IMG
- Pavement Management
- Permit Unit
- State Road Maintenance
- Traffic Engineering
- Traffic Surveys

---

# 2012 ROAD SYSTEM CHANGES

---






<b>PETITION</b>	<b>COUNTY</b>	<b>APPROVAL DATE</b>	<b>ROUTE NUMBER</b>	<b>PORTION REASSIGNED</b>	<b>STREET NAME</b>	<b>LENGTH (miles)</b>	<b>TYPE OF CHANGE</b>	<b>REMARKS (See Attached Map)</b>
49935	CUMBERLAND	3/8/2012	SR 2859		HEATHERLY CT	0.07	SYSTEM ADDITION VIA PETITION	
49935	CUMBERLAND	3/8/2012	SR 2858		WILLOWBRAE DR	0.14	SYSTEM ADDITION VIA PETITION	



Add  
SR 2859  
Heatherly Ct.  
for 0.07 Mi

Add  
SR 2858  
Willowbrae Dr  
for 0.14 Mi

**Legend**

-  Addition
-  Deletion
-  Reassignment
-  SR
-  NC
-  US
-  Interstate
-  Ramp

