



STATE OF NORTH CAROLINA
DEPARTMENT OF TRANSPORTATION

BEVERLY EAVES PERDUE
GOVERNOR

Tuesday, March 13, 2012

EUGENE A. CONTI, JR.
SECRETARY

MEMORANDUM TO: Mr. Gregory W. Burns, PE
Division Engineer
Division 6

FROM: John C. Farley, Manager
Geographic Information Systems Unit

SUBJECT: 2012 District 2 Road System Changes

The Data Conversion Group has been authorized to make the following changes to the state road system as indicated below. We request that you make similar changes to the related maps and files in your Division and District offices, and install appropriate road number signs if necessary. we have updated our records accordingly. If our system changes do not conform to the actual conditions in the field, please return this memorandum with recommendations.

PETITION	County	Approval Date
49932	CUMBERLAND	3/8/2012

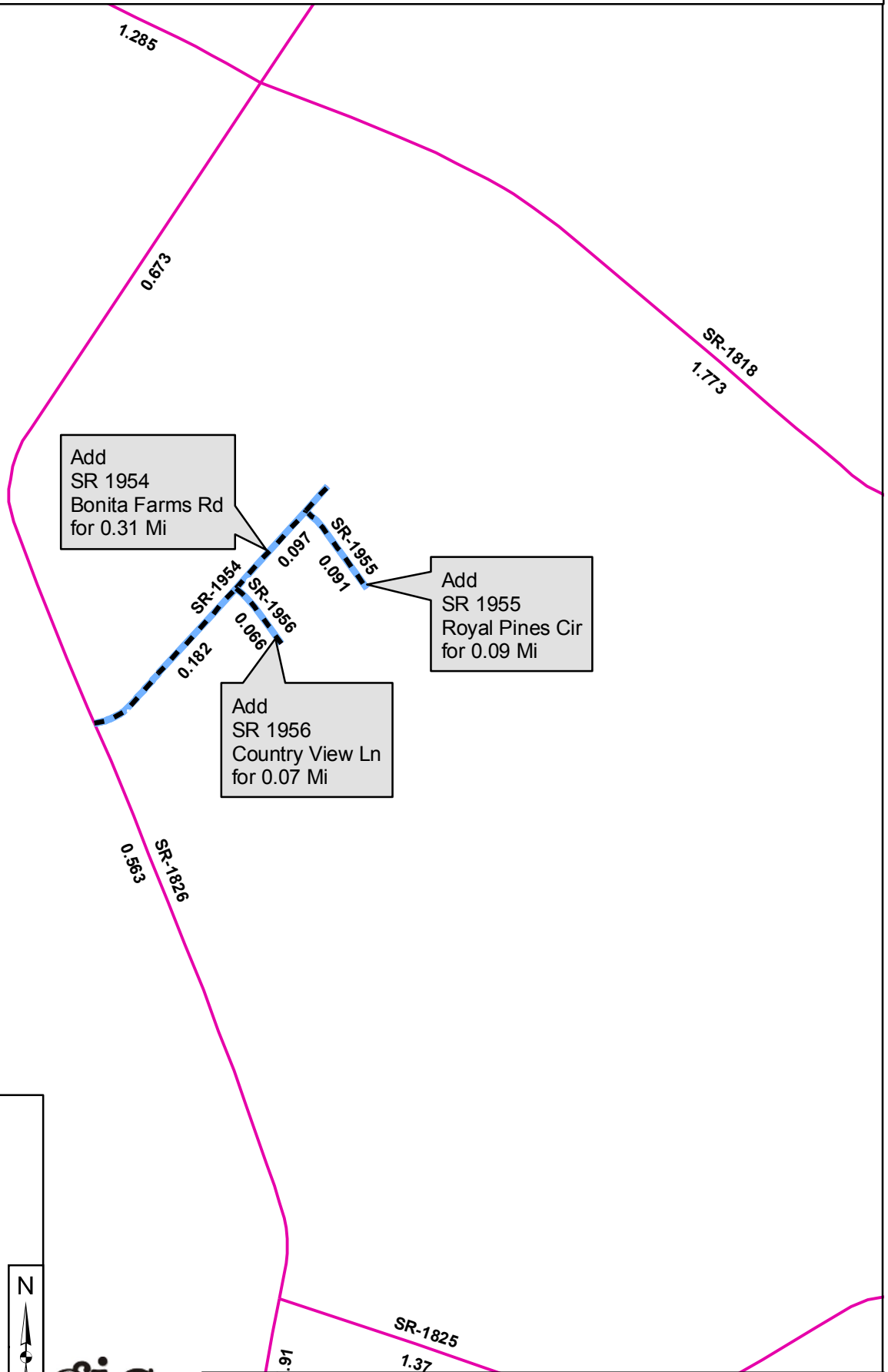
Inquiries about changes should be referred to the GIS Help Desk at (919) 707-2152.
Thank you for your assistance.

JCF

- cc: BSIP
- Bridge Maintenance
- Division Right of Way
- IMG
- Pavement Management
- Permit Unit
- State Road Maintenance
- Traffic Engineering
- Traffic Surveys

2012 ROAD SYSTEM CHANGES

PETITION	COUNTY	APPROVAL DATE	ROUTE NUMBER	PORTION REASSIGNED	STREET NAME	LENGTH (miles)	TYPE OF CHANGE	REMARKS (See Attached Map)
49932	CUMBERLAND	3/8/2012	SR 1956		COUNTRY VIEW LANE	0.07	SYSTEM ADDITION VIA PETITION	
49932	CUMBERLAND	3/8/2012	SR 1955		ROYAL PINES CIRCLE	0.09	SYSTEM ADDITION VIA PETITION	
49932	CUMBERLAND	3/8/2012	SR 1954		BONITA FARMS RD	0.31	SYSTEM ADDITION VIA PETITION	







Add
SR 1954
Bonita Farms Rd
for 0.31 Mi

Add
SR 1955
Royal Pines Cir
for 0.09 Mi

Add
SR 1956
Country View Ln
for 0.07 Mi

Legend

-  Addition
-  Deletion
-  Reassignment
-  SR
-  NC
-  US
-  Interstate
-  Ramp

