



STATE OF NORTH CAROLINA  
DEPARTMENT OF TRANSPORTATION

BEVERLY EAVES PERDUE  
GOVERNOR

Thursday, November 10, 2011

EUGENE A. CONTI, JR.  
SECRETARY

**MEMORANDUM TO:** Mr. Barry Moose, PE  
Division Engineer  
Division 10

**FROM:** John C. Farley, Manager  
Geographic Information Systems Unit

**SUBJECT:** 2011 District 2 Road Sytem Changes

The Data Conversion Group has been authorized to make the following changes to the state road system as indicated below. We request that you make similar changes to the related maps and files in your Division and District offices, and install appropriate road number signs if necessary. we have updated our records accordingly. If our system changes do not conform to the actual conditions in the field, please return this memorandum with recommendations.

Correction Number	County	Approval Date
COR_59_11-11_1	MECKLENBURG	11/3/2011

Inquiries about changes should be referred to the GIS Help Desk at (919) 707-2152.  
Thank you for your assistance.

JCF

cc: BSIP  
Bridge Maintenance  
Division Right of Way  
IMG  
Pavement Management  
Permit Unit  
State Road Maintenance  
Traffic Engineering  
Traffic Surveys

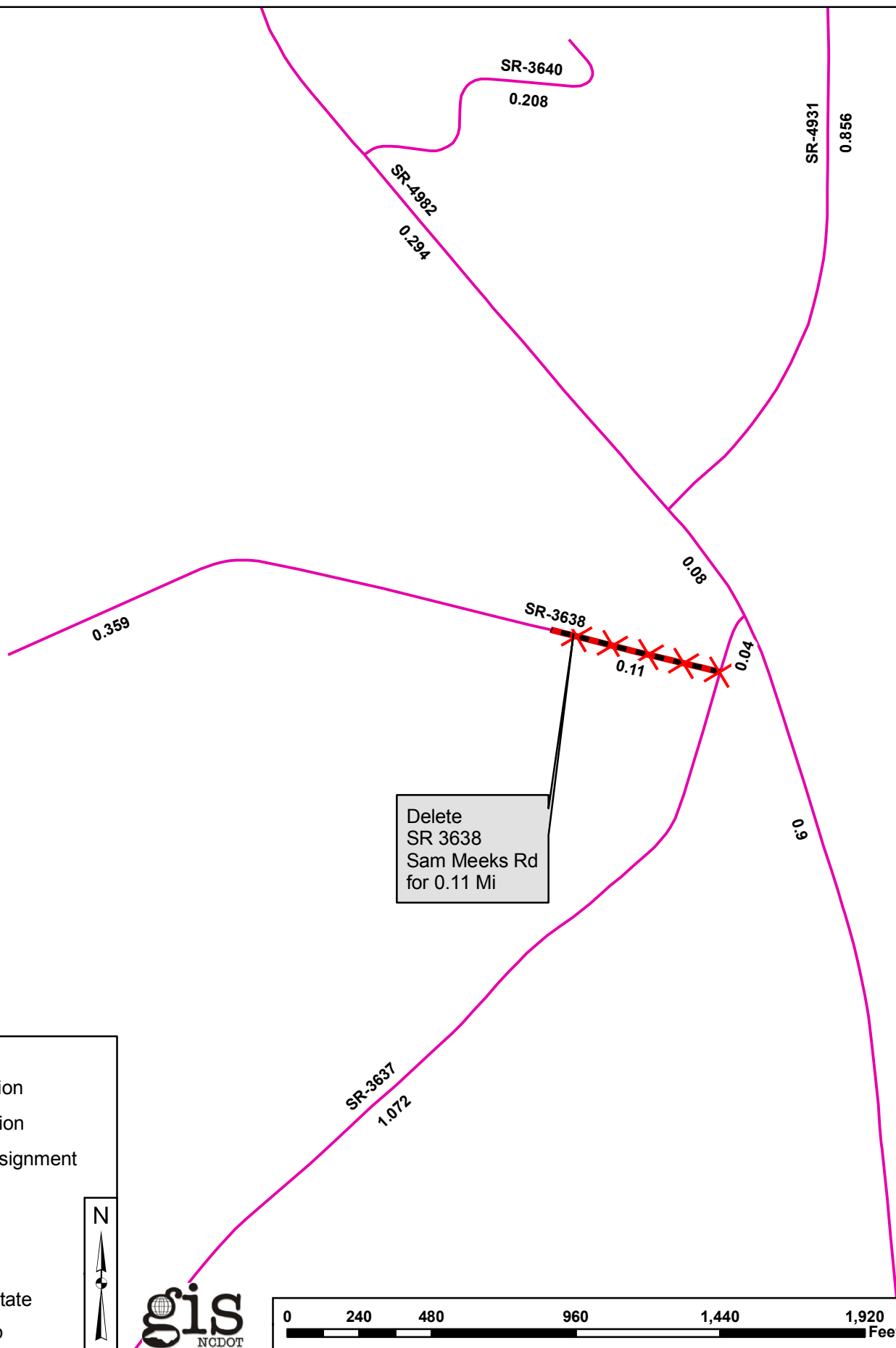
**MAILING ADDRESS:**  
NC DEPARTMENT OF TRANSPORTATION  
GEOGRAPHIC INFORMATION SYSTEMS  
1521 MAIL SERVICE CENTER  
RALEIGH NC 27699-1521

**gis**  
NCDOT  
WWW.NCDOT.ORG/IT/GIS

**Delivery Address:**  
4101 CAPITAL BLVD.  
RALEIGH, NC 27604  
PHONE: (919) 707-2152  
FAX: (919) 707-2214

# 2011 ROAD SYSTEM CHANGES

<b>CORRECTION REQUEST</b>	<b>COUNTY</b>	<b>APPROVAL DATE</b>	<b>NEW ROUTE</b>	<b>EXISTING ROUTE</b>	<b>STREET NAME</b>	<b>LENGTH (miles)</b>	<b>TYPE OF CHANGE</b>	<b>REMARKS (See Attached Map)</b>
COR_59_11-11_1	MECKLENBURG	11/3/2011		SR 3638	SAM MEEKS RD	0.11	SYSTEM DELETION VIA CORRECTION REQUEST	MAP , SEGMENT



**Legend**

- Addition
- Deletion
- Reassignment
- SR
- NC
- US
- Interstate
- Ramp

