



STATE OF NORTH CAROLINA  
DEPARTMENT OF TRANSPORTATION

BEVERLY EAVES PERDUE  
GOVERNOR

Thursday, July 14, 2011

EUGENE A. CONTI, JR.  
SECRETARY

**MEMORANDUM TO:** Mr. H. Allen Pope, PE  
Division Engineer  
Division 3

**FROM:** John C. Farley, Manager  
Geographic Information Systems Unit

**SUBJECT:** 2011 District 1 Road System Changes

The Data Conversion Group has been authorized to make the following changes to the state road system as indicated below. We request that you make similar changes to the related maps and files in your Division and District offices, and install appropriate road number signs if necessary. we have updated our records accordingly. If our system changes do not conform to the actual conditions in the field, please return this memorandum with recommendations.

PETITION	County	Approval Date
49760	ONslow	7/7/2011

Inquiries about changes should be referred to the GIS Help Desk at (919) 707-2152.  
Thank you for your assistance.

JCF

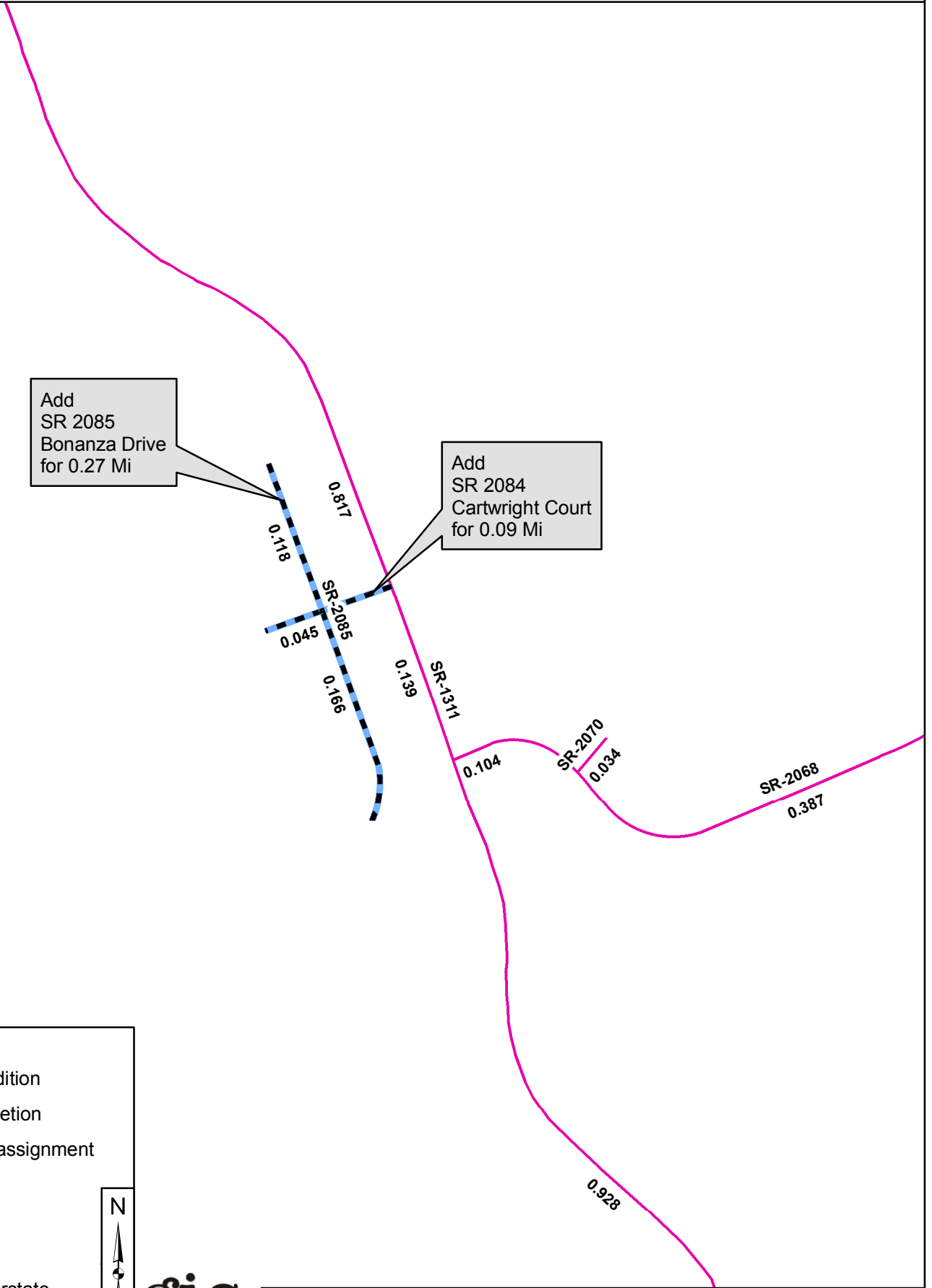
- cc: BSIP
- Bridge Maintenance
- Division Right of Way
- IMG
- Pavement Management
- Permit Unit
- State Road Maintenance
- Traffic Engineering
- Traffic Surveys

---

# 2011 ROAD SYSTEM CHANGES

---





<b>PETITION</b>	<b>COUNTY</b>	<b>APPROVAL DATE</b>	<b>ROUTE NUMBER</b>	<b>PORTION REASSIGNED</b>	<b>STREET NAME</b>	<b>LENGTH (miles)</b>	<b>TYPE OF CHANGE</b>	<b>REMARKS (See Attached Map)</b>
49760	ONSLOW	7/7/2011	SR 2085		BONANZA DR	0.27	SYSTEM ADDITION VIA PETITION	
49760	ONSLOW	7/7/2011	SR 2084		CARTWRIGHT CT	0.09	SYSTEM ADDITION VIA PETITION	



Add  
SR 2085  
Bonanza Drive  
for 0.27 Mi

Add  
SR 2084  
Cartwright Court  
for 0.09 Mi

**Legend**

-  Addition
-  Deletion
-  Reassignment
-  SR
-  NC
-  US
-  Interstate
-  Ramp

