



STATE OF NORTH CAROLINA  
DEPARTMENT OF TRANSPORTATION

PATRICK MCCRORY  
GOVERNOR

Thursday, July 24, 2014

ANTHONY TATA  
SECRETARY

**MEMORANDUM TO:** Mr. Robert W. Stone II, PE  
Division Engineer  
Division 8

**FROM:** John C. Farley, Manager  
Geographic Information Systems Unit

**SUBJECT:** 2011 District 1 Road System Changes

The Data Conversion Group has been authorized to make the following changes to the state road system as indicated below. We request that you make similar changes to the related maps and files in your Division and District offices, and install appropriate road number signs if necessary. We have updated our records accordingly. If our system changes do not conform to the actual conditions in the field, please return this memorandum with recommendations.

Document Number	County	Approval Date
R-5183	RANDOLPH	6/16/2011

Inquiries about changes should be referred to the GIS Help Desk at (919) 707-2152.  
Thank you for your assistance.

JCF

cc: BSIP  
Bridge Maintenance  
Division Right of Way  
IMG  
Pavement Management  
Permit Unit  
State Road Maintenance  
Traffic Engineering  
Traffic Surveys

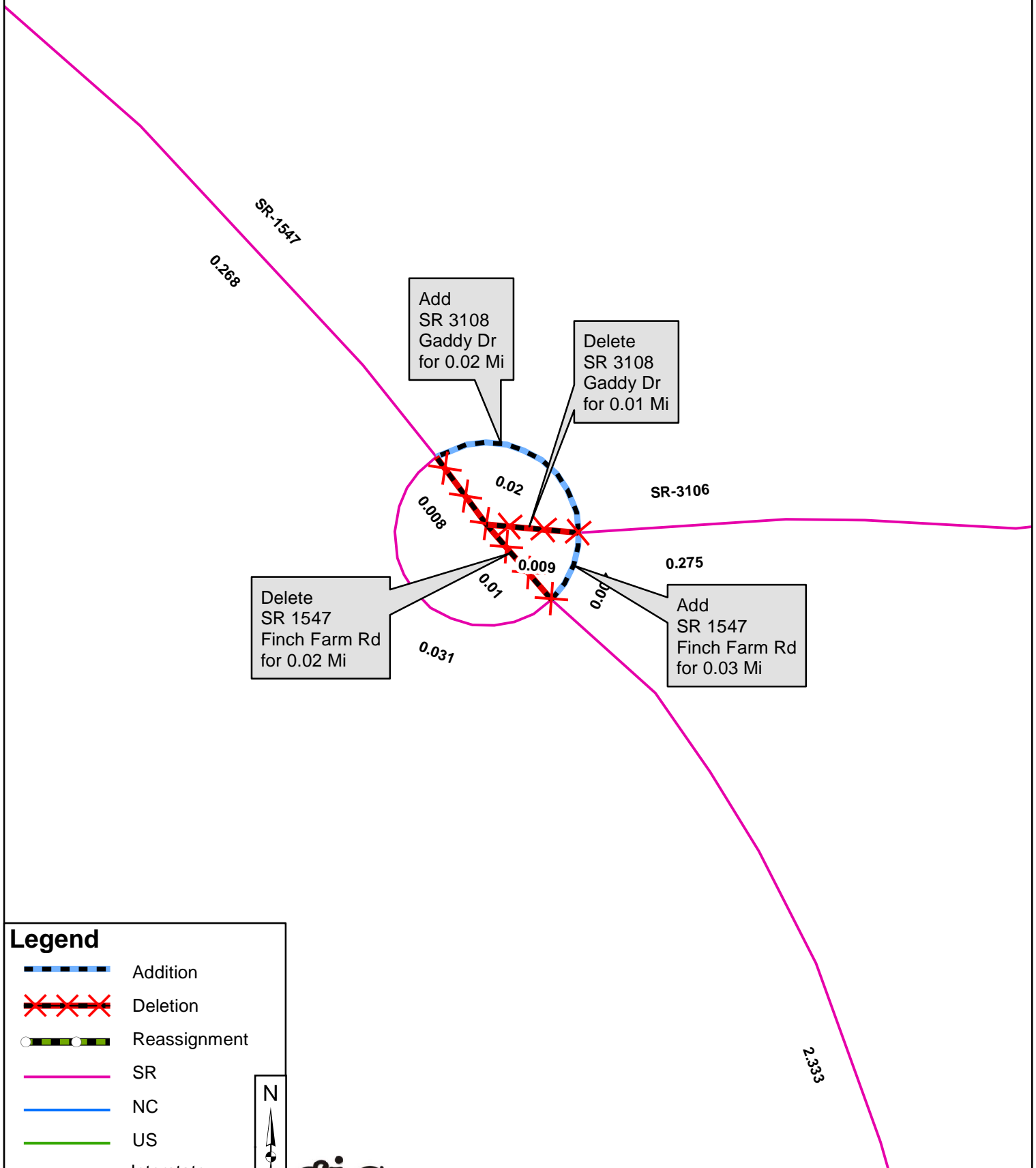
**MAILING ADDRESS:**  
NC DEPARTMENT OF TRANSPORTATION  
GEOGRAPHIC INFORMATION SYSTEMS  
1521 MAIL SERVICE CENTER  
RALEIGH, NC 27699-1521










**DELIVERY ADDRESS:**  
4101 CAPITAL BLVD.  
RALEIGH, NC 27604  
PHONE: (919) 707-2152  
FAX: (919) 707-2214

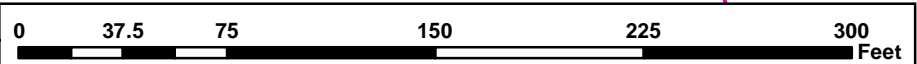
# 2011 ROAD SYSTEM CHANGES

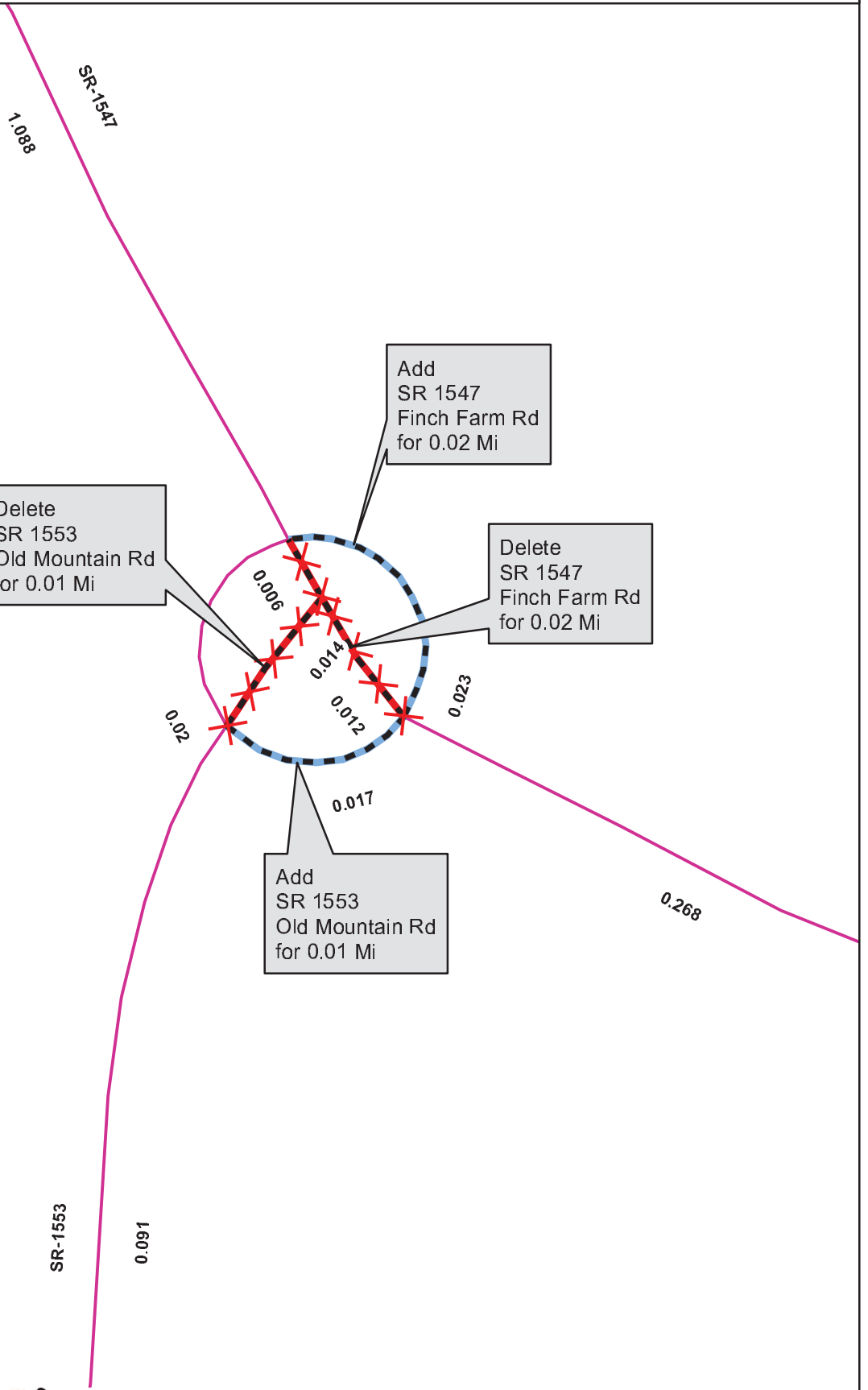
TIP	COUNTY	APPROVAL DATE	NEW ROUTE	EXISTING ROUTE	STREET NAME	LENGTH (miles)	TYPE OF CHANGE	REMARKS (See Attached Map)
R-5183	RANDOLPH	6/16/2011		SR 3108	GADDY RD	0.02	SYSTEM ADDITION - EXISTING VIA TIP	MAP A, SEGMENT
R-5183	RANDOLPH	6/16/2011		SR 1547	FINCH FARM RD	0.03	SYSTEM ADDITION - EXISTING VIA TIP	MAP A, SEGMENT
R-5183	RANDOLPH	6/16/2011		SR 1553	OLD MOUNTAIN RD	0.01	SYSTEM ADDITION - EXISTING VIA TIP	MAP B, SEGMENT
R-5183	RANDOLPH	6/16/2011		SR 1547	FINCH FARM RD	0.02	SYSTEM ADDITION - EXISTING VIA TIP	MAP B, SEGMENT
R-5183	RANDOLPH	6/16/2011		SR 3108	GADDY DR	0.01	SYSTEM DELETION VIA TIP	MAP A, SEGMENT
R-5183	RANDOLPH	6/16/2011		SR 1547	FINCH FARM RD	0.02	SYSTEM DELETION VIA TIP	MAP A, SEGMENT
R-5183	RANDOLPH	6/16/2011		SR 1553	OLD MOUNTAIN RD	0.01	SYSTEM DELETION VIA TIP	MAP B, SEGMENT
R-5183	RANDOLPH	6/16/2011		SR 1547	FINCH FARM RD	0.02	SYSTEM DELETION VIA TIP	MAP B, SEGMENT



**Legend**

-  Addition
-  Deletion
-  Reassignment
-  SR
-  NC
-  US
-  Interstate
-  Ramp





**Legend**

- Addition
- Deletion
- Reassignment
- SR
- NC
- US
- Interstate
- Ramp

N