



STATE OF NORTH CAROLINA
DEPARTMENT OF TRANSPORTATION

BEVERLY EAVES PERDUE
GOVERNOR

Tuesday, May 10, 2011

EUGENE A. CONTI, JR.
SECRETARY

MEMORANDUM TO: Mr. C.E. Lassiter, PE
Division Engineer
Division 2

FROM: John C. Farley, Manager
Geographic Information Systems Unit

SUBJECT: 2011 District 1 Road System Changes

The Data Conversion Group has been authorized to make the following changes to the state road system as indicated below. We request that you make similar changes to the related maps and files in your Division and District offices, and install appropriate road number signs if necessary. we have updated our records accordingly. If our system changes do not conform to the actual conditions in the field, please return this memorandum with recommendations.

PETITION	County	Approval Date
49724	PITT	5/5/2011

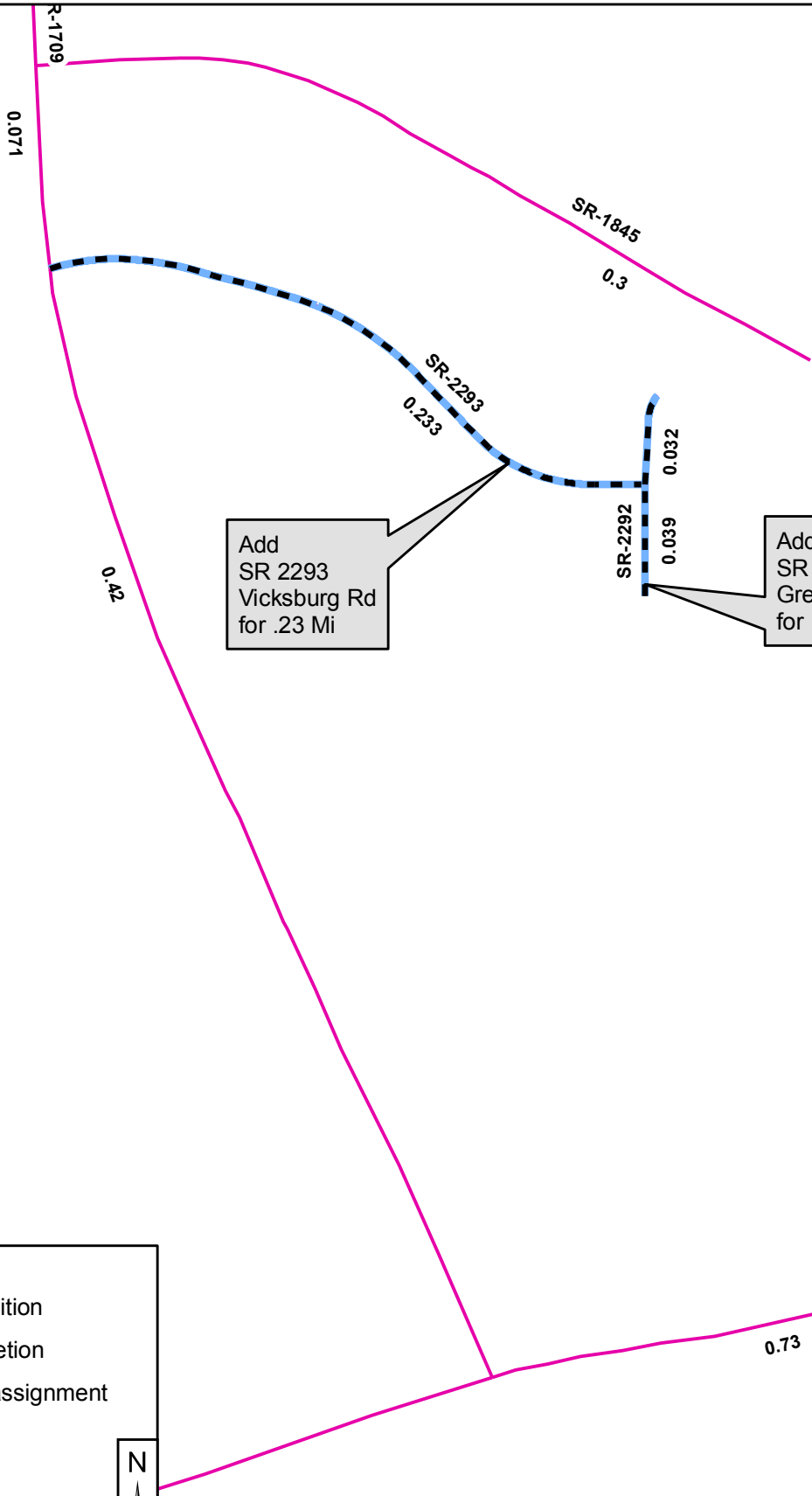
Inquiries about changes should be referred to the GIS Help Desk at (919) 707-2152.
Thank you for your assistance.

JCF

cc: BSIP
Bridge Maintenance
Division Right of Way
IMG
Pavement Management
Permit Unit
State Road Maintenance
Traffic Engineering
Traffic Surveys

2011 ROAD SYSTEM CHANGES









PETITION	COUNTY	APPROVAL DATE	ROUTE NUMBER	PORTION REASSIGNED	STREET NAME	LENGTH (miles)	TYPE OF CHANGE	REMARKS (See Attached Map)
49724	PITT	5/5/2011	SR 2293		VICKSBURG DRIVE	0.23	SYSTEM ADDITION VIA PETITION	
49724	PITT	5/5/2011	SR 2292		GREAVES COURT	0.71	SYSTEM ADDITION VIA PETITION	



Add
SR 2293
Vicksburg Rd
for .23 Mi

Add
SR 2292
Greaves Ct
for .071 Mi

Legend

-  Addition
-  Deletion
-  Reassignment
-  SR
-  NC
-  US
-  Interstate
-  Ramp

N

