



STATE OF NORTH CAROLINA
DEPARTMENT OF TRANSPORTATION

BEVERLY EAVES PERDUE
GOVERNOR

Friday, June 04, 2010

EUGENE A. CONTI, JR.
SECRETARY

MEMORANDUM TO: Mr. H. Allen Pope, PE
Division Engineer
Division 3

FROM: John C. Farley, Manager
Geographic Information Systems Unit

SUBJECT: 2010 District 1 Road System Changes

The Data Conversion Group has been authorized to make the following changes to the state road system as indicated below. We request that you make similar changes to the related maps and files in your Division and District offices, and install appropriate road number signs if necessary. we have updated our records accordingly. If our system changes do not conform to the actual conditions in the field, please return this memorandum with recommendations.

PETITION	County	Approval Date
49443	ONslow	6/3/2010

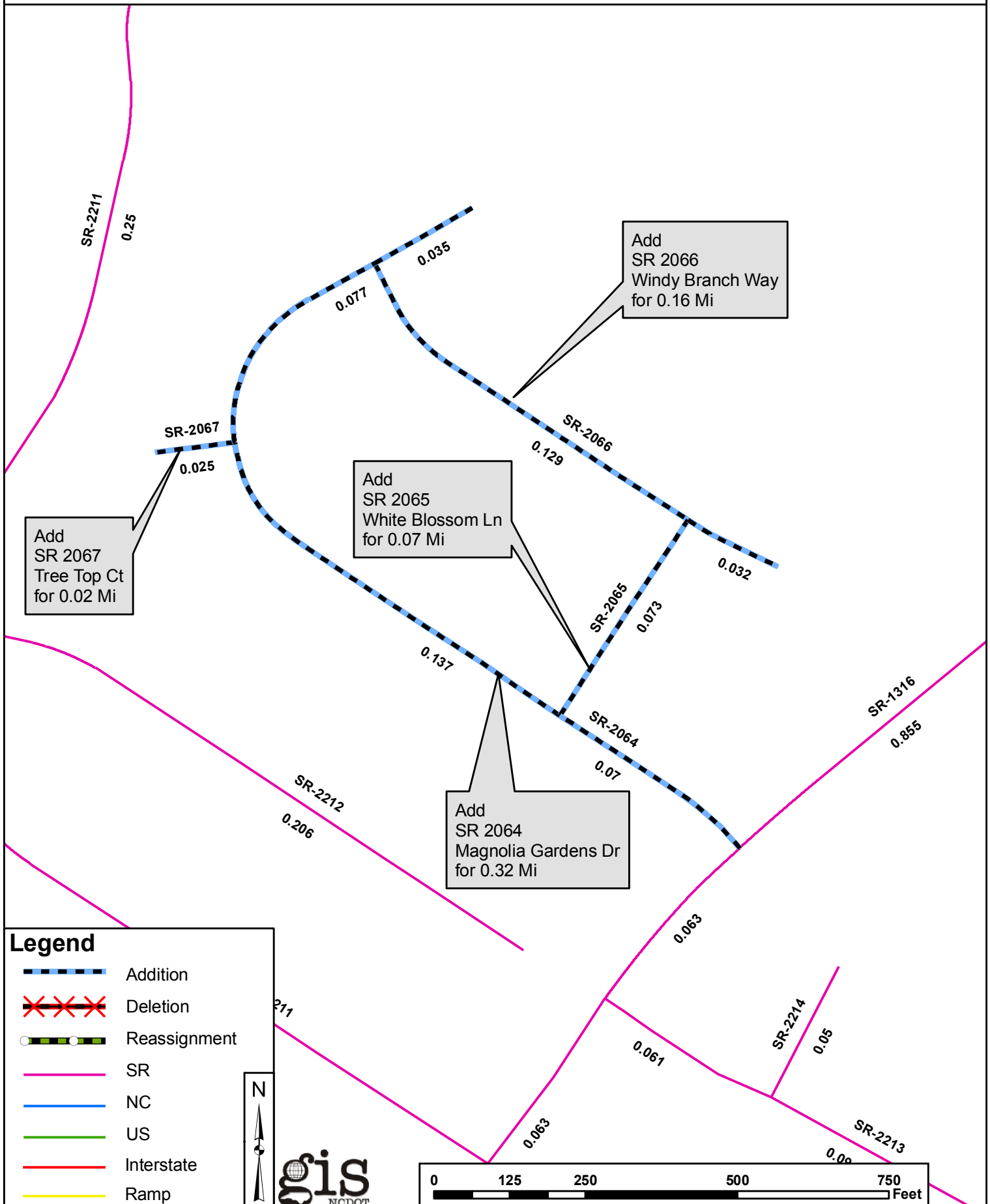
Inquiries about changes should be referred to the GIS Help Desk at (919) 707-2152.
Thank you for your assistance.

JCF








- cc: BSIP
- Bridge Maintenance
- Division Right of Way
- IMG
- Pavement Management
- Permit Unit
- State Road Maintenance
- Traffic Engineering
- Traffic Surveys

2010 ROAD SYSTEM CHANGES

PETITION	COUNTY	APPROVAL DATE	ROUTE NUMBER	PORTION REASSIGNED TO	STREET NAME	LENGTH (miles)	TYPE OF CHANGE	REMARKS (See Attached Map)
49443	ONSLOW	6/3/2010	SR 2067		TREE TOP CT	.02	System Addition VIA PETITION	
49443	ONSLOW	6/3/2010	SR 2066		WINDY BRANCH WAY	.16	System Addition VIA PETITION	
49443	ONSLOW	6/3/2010	SR 2065		WHITE BLOSSOM LN	.07	System Addition VIA PETITION	
49443	ONSLOW	6/3/2010	SR 2064		MAGNOLIA GARDENS DR	.32	System Addition VIA PETITION	



Legend

-  Addition
-  Deletion
-  Reassignment
-  SR
-  NC
-  US
-  Interstate
-  Ramp

