



STATE OF NORTH CAROLINA  
DEPARTMENT OF TRANSPORTATION

ROY COOPER  
GOVERNOR

JAMES H. TROGDON, III  
SECRETARY

**DATE:** September 05, 2017  
**TO:** Mrs. Karen E. Collette, PE  
Division Engineer  
Division 3  
**FROM:** Mr. John C. Farley, GISP, CPM  
Manager  
Geographic Information Systems Unit  
**SUBJECT:** 2017 District 3 Road System Changes

The GIS Unit's Data Conversion Group has been authorized to make the changes indicated below to the state road system. We request that you update the related maps and files in your offices and install appropriate road number signs, if necessary. If our system changes do not conform to the actual conditions in the field, please return this memorandum with recommendations.

LRS Change	County	Approval Date
LRS_10111_09-17	NEW HANOVER	5/6/2010

Questions or comments about changes should be referred to the GIS Help Desk at [GISHelp@ncdot.gov](mailto:GISHelp@ncdot.gov).  
Thank you for your assistance.

JCF

cc: BSIP  
Bridge Maintenance  
Division Right of Way  
IMG  
Pavement Management  
Permit Unit  
State Road Maintenance  
Traffic Engineering  
Traffic Surveys

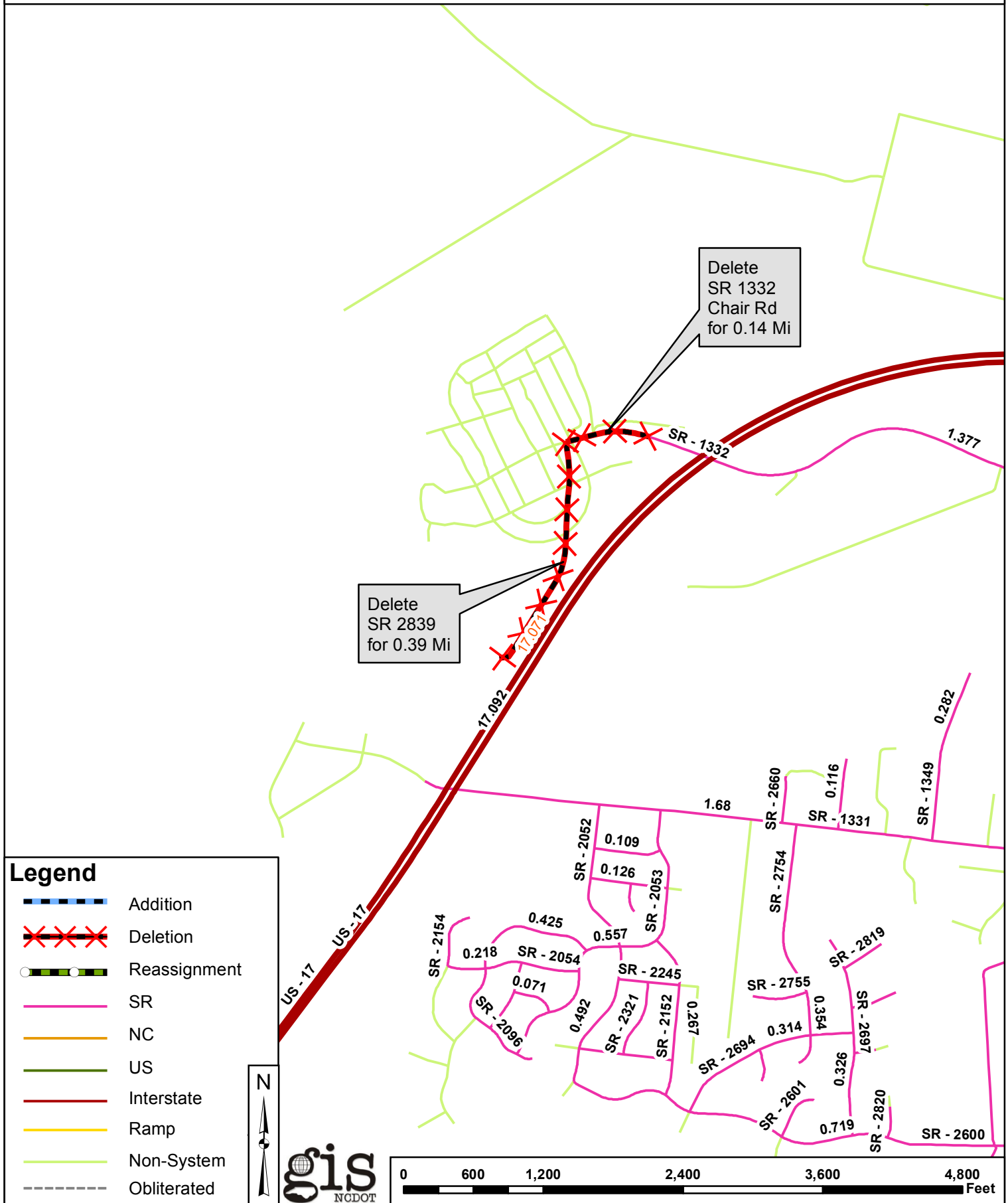
*Mailing Address:*  
NC DEPARTMENT OF TRANSPORTATION  
GEOGRAPHIC INFORMATION SYSTEMS  
1521 MAIL SERVICE CENTER  
RALEIGH, NC 27699-1521

*Telephone:* (919) 707-2165  
*Fax:* (919) 707-2210  
*Customer Service:* 1-877-368-4968  
*Website:* [www.ncdot.gov](http://www.ncdot.gov)

*Location:*  
4101 CAPITAL BLVD.  
RALEIGH, NC 27604  
FAX: (919) 707-2214

# 2017 ROAD SYSTEM CHANGES

<b>LRS</b>	<b>COUNTY</b>	<b>APPROVAL DATE</b>	<b>NEW ROUTE</b>	<b>EXISTING ROUTE</b>	<b>STREET NAME</b>	<b>LENGTH (miles)</b>	<b>TYPE OF CHANGE</b>	<b>REMARKS (See Attached Map)</b>
LRS_10111_09-17	NEW HANOVER	5/6/2010		SR 2839		0.39	SYSTEM DELETION VIA LRS CHANGE	MAP , SEGMENT
LRS_10111_09-17	NEW HANOVER	5/6/2010		SR 1332	CHAIR RD	0.14	SYSTEM DELETION VIA LRS CHANGE	MAP , SEGMENT



Delete  
SR 1332  
Chair Rd  
for 0.14 Mi

Delete  
SR 2839  
for 0.39 Mi

**Legend**

-  Addition
-  Deletion
-  Reassignment
-  SR
-  NC
-  US
-  Interstate
-  Ramp
-  Non-System
-  Obliterated

