



STATE OF NORTH CAROLINA
DEPARTMENT OF TRANSPORTATION

BEVERLY EAVES PERDUE
GOVERNOR

Tuesday, November 10, 2009

EUGENE A. CONTI, JR.
SECRETARY

MEMORANDUM TO: Mr. C.E. Lassiter, PE
Division Engineer
Division 2

FROM: John C. Farley, Manager
Geographic Information Systems Unit

SUBJECT: 2009 District 1 Road System Changes

The Data Conversion Group has been authorized to make the following changes to the state road system as indicated below. We request that you make similar changes to the related maps and files in your Division and District offices, and install appropriate road number signs if necessary. we have updated our records accordingly. If our system changes do not conform to the actual conditions in the field, please return this memorandum with recommendations.

PETITION	County	Approval Date
49256	PITT	11/5/2009

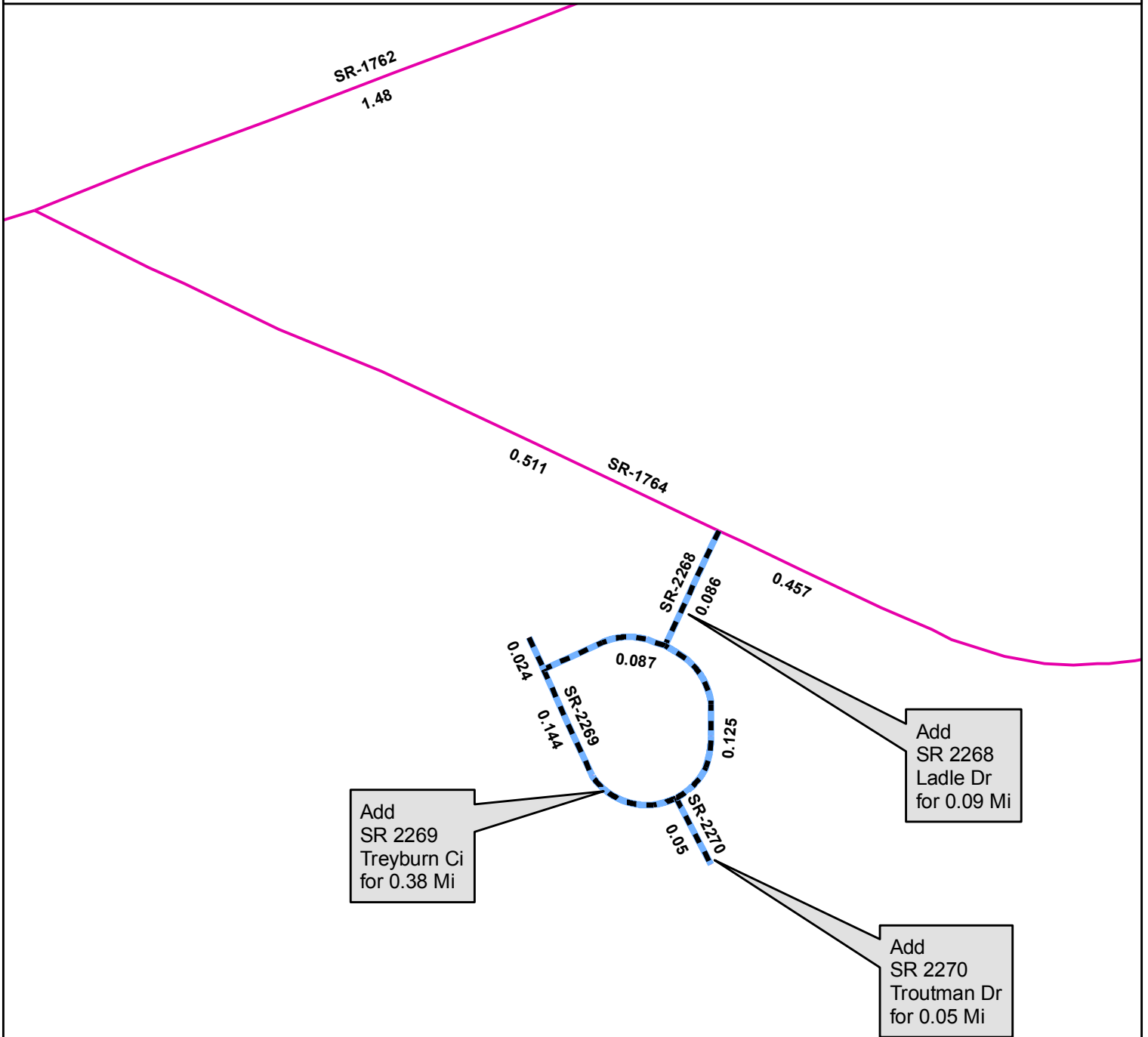
Inquiries about changes should be referred to the GIS Help Desk at (919) 707-2152.
Thank you for your assistance.

JCF







- cc: BSIP
- Bridge Maintenance
- Division Right of Way
- IMG
- Pavement Management
- Permit Unit
- State Road Maintenance
- Traffic Engineering
- Traffic Surveys

2009 ROAD SYSTEM CHANGES

PETITION	COUNTY	APPROVAL DATE	ROUTE NUMBER	PORTION REASSIGNED TO	STREET NAME	LENGTH (miles)	TYPE OF CHANGE	REMARKS (See Attached Map)
49256	PITT	11/5/2009	SR 2270		TROUTMAN DR	.05	System Addition VIA PETITION	
49256	PITT	11/5/2009	SR 2269		TREYBURN CIR	.38	System Addition VIA PETITION	
49256	PITT	11/5/2009	SR 2268		LADLE DR	.09	System Addition VIA PETITION	



Legend

-  Addition
-  Deletion
-  Reassignment
-  SR
-  NC
-  US
-  Interstate
-  Ramp

