



STATE OF NORTH CAROLINA  
DEPARTMENT OF TRANSPORTATION

BEVERLY EAVES PERDUE  
GOVERNOR

Thursday, 28 May, 2009

EUGENE A. CONTI, JR.  
SECRETARY

**MEMORANDUM TO:** Mr. Mike Mills, PE  
Division Engineer  
Division 7

**FROM:** Information, Mapping, and Graphics Unit

**SUBJECT:** 2009 District 2 Road Sytem Changes

The Road Inventory Information Section has been authorized to make the following changes to the state road system as indicated below. We request that you make similar changes to the related maps and files in your Division and District offices, and install appropriate road number signs if necessary. We have updated our records and county maps accordingly. If our system changes do not conform to the actual conditions in the field, please return this memorandum with recommendations.

Municipality	County	Approval Date
SUMMERFIELD	GUILFORD	4/3/2009

Inquires about changes should be referred to one of the following: For Primary Roads call Paulette Smith at (919)-212-6100, and for Secondary Roads call Ron Tucker at (919)-212-6085. Thank you for your assistance.

JLA  
enclosures ( )

- cc: BSIP  
Bridge Maintenance  
Division Right of Way  
GIS  
Pavement Management  
Permit Unit  
State Road Maintenance  
Traffic Engineering  
Traffic Surveys

# 2009 ROAD SYSTEM CHANGES

MUNICIPALITY	COUNTY	APPROVAL DATE	NEW NUMBER	EXISTING NUMBER	STREET NAME	LENGTH (miles)	TYPE OF CHANGE	REMARKS (See Attached Map)
SUMMERFIELD	GUILFORD	4/3/2009	SR 4949		VINSANTO WAY	0.13	SYSTEM ADDITION VIA MUNICIPAL AGREEMENT	MAP , SEGMENT
SUMMERFIELD	GUILFORD	4/3/2009	SR 4948		FRESIA WAY	0.12	SYSTEM ADDITION VIA MUNICIPAL AGREEMENT	MAP , SEGMENT
SUMMERFIELD	GUILFORD	4/3/2009	SR 4947		LIGURIA COURT	0.06	SYSTEM ADDITION VIA MUNICIPAL AGREEMENT	MAP , SEGMENT
SUMMERFIELD	GUILFORD	4/3/2009	SR 4946		BRUNELLO PLACE	0.07	SYSTEM ADDITION VIA MUNICIPAL AGREEMENT	MAP , SEGMENT
SUMMERFIELD	GUILFORD	4/3/2009	SR 4945		AGLIANO TERRACE	0.13	SYSTEM ADDITION VIA MUNICIPAL AGREEMENT	MAP , SEGMENT
SUMMERFIELD	GUILFORD	4/3/2009	SR 4944		BIANCO TERRACE	0.06	SYSTEM ADDITION VIA MUNICIPAL AGREEMENT	MAP , SEGMENT
SUMMERFIELD	GUILFORD	4/3/2009	SR 4943		TOSCANA TRACE	1.01	SYSTEM ADDITION VIA MUNICIPAL AGREEMENT	MAP , SEGMENT
SUMMERFIELD	GUILFORD	4/3/2009		SR 2320	BRONCO LANE	0.15	SYSTEM ADDITION VIA MUNICIPAL AGREEMENT	MAP , SEGMENT
SUMMERFIELD	GUILFORD	4/3/2009		SR 2319	DENISON RD	0.35	SYSTEM ADDITION VIA MUNICIPAL AGREEMENT	MAP , SEGMENT

MUN AGR: 40/0729/04-09

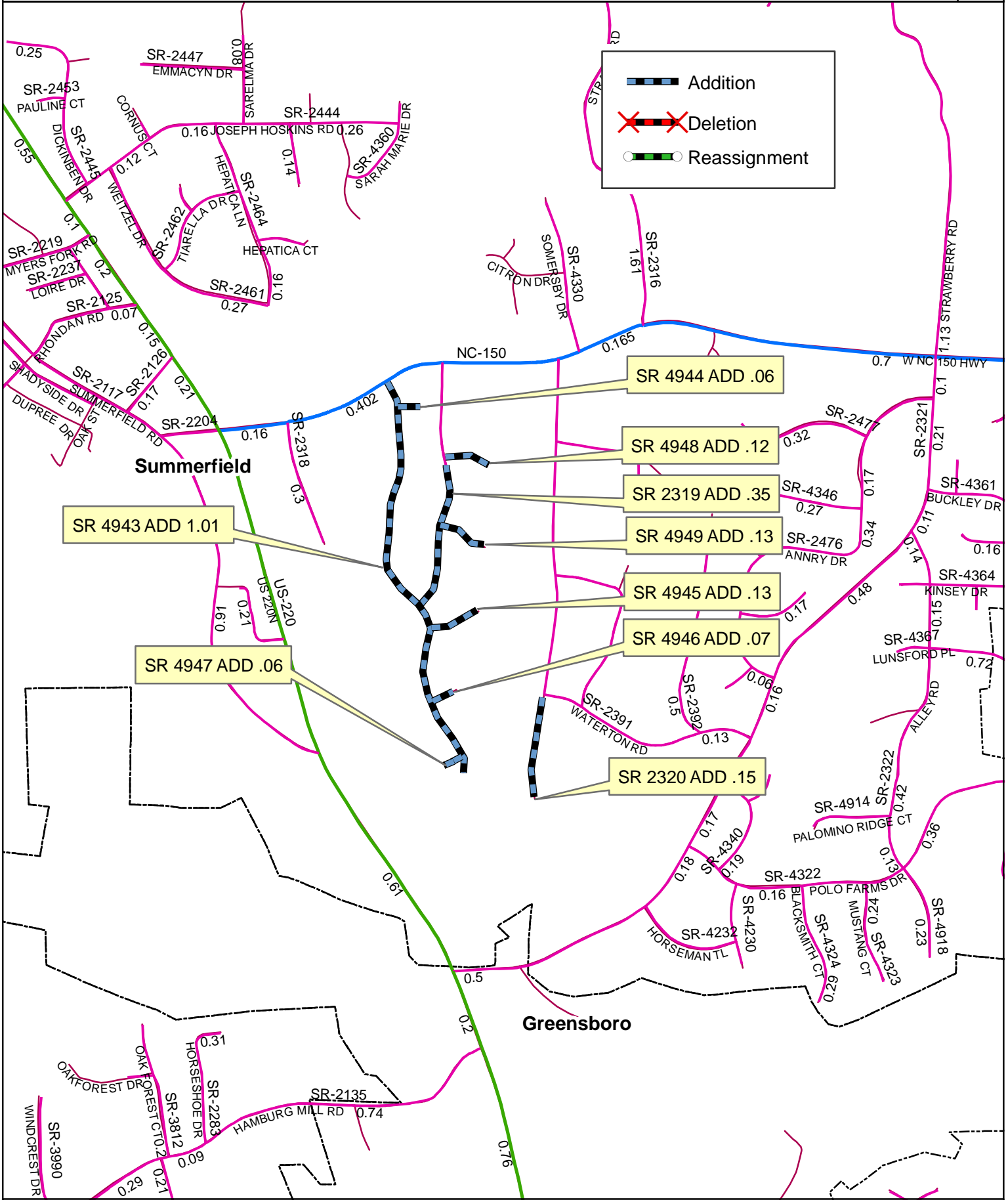
CO: GUILFORD

SR #: 4943 2319 4948 4949 4944

Approval Date: 04/03/09

Map Date: 04/29/09

4946 4945 4947 2320     



Source: XXXXXXXX

NAME: GBW

SCALE: XXX

Map: X