



STATE OF NORTH CAROLINA
DEPARTMENT OF TRANSPORTATION

MICHAEL F. EASLEY
GOVERNOR

Tuesday, 13 January, 2009

LYNDO TIPPETT
SECRETARY

MEMORANDUM TO: Mr. Barry S. Moose, PE
Division Engineer
Division 10

FROM: Information, and Mapping Unit

SUBJECT: 2008 District 3 Road System Changes

The Road Inventory Information Section has been authorized to make the following changes to the state road system as indicated below. We request that you make similar changes to the related maps and files in your Division and District offices, and install appropriate road number signs if necessary. We have updated our records and county maps accordingly. If our system changes do not conform to the actual conditions in the field, please return this memorandum with recommendations.

Petition Number	County	Approval Date
48946	UNION	12/11/2008

Inquires about changes should be referred to one of the following: For Primary Roads call Paulette Smith at (919)-212-6100, and for Secondary Roads call Ron Tucker at (919)-212-6085. Thank you for your assistance.

JLC
enclosures ()

- cc: BSIP
- Bridge Maintenance
- Division Right of Way
- GIS
- Pavement Management
- Permit Unit
- State Road Maintenance
- Traffic Engineering
- Traffic Surveys

2008 ROAD SYSTEM CHANGES

PETITION NUMBER	COUNTY	APPROVAL DATE	NEW NUMBER	EXISTING NUMBER	STREET NAME	LENGT H	TYPE OF CHANGE	REMARKS (See Attached Map)
48946	UNION	12/11/2008	SR 3187		MORAVIAN FALLS CT	0.04	SYSTEM ADDITION VIA PETITION	MAP , SEGMENT
48946	UNION	12/11/2008	SR 3186		SILVER RUN DRIVE	0.23	SYSTEM ADDITION VIA PETITION	MAP , SEGMENT
48946	UNION	12/11/2008	SR 3185		LINVILLE FALLS LANE	0.16	SYSTEM ADDITION VIA PETITION	MAP , SEGMENT
48946	UNION	12/11/2008	SR 3184		HIGH SHOALS DR	0.39	SYSTEM ADDITION VIA PETITION	MAP , SEGMENT

PETITION: 48946




CO: UNION

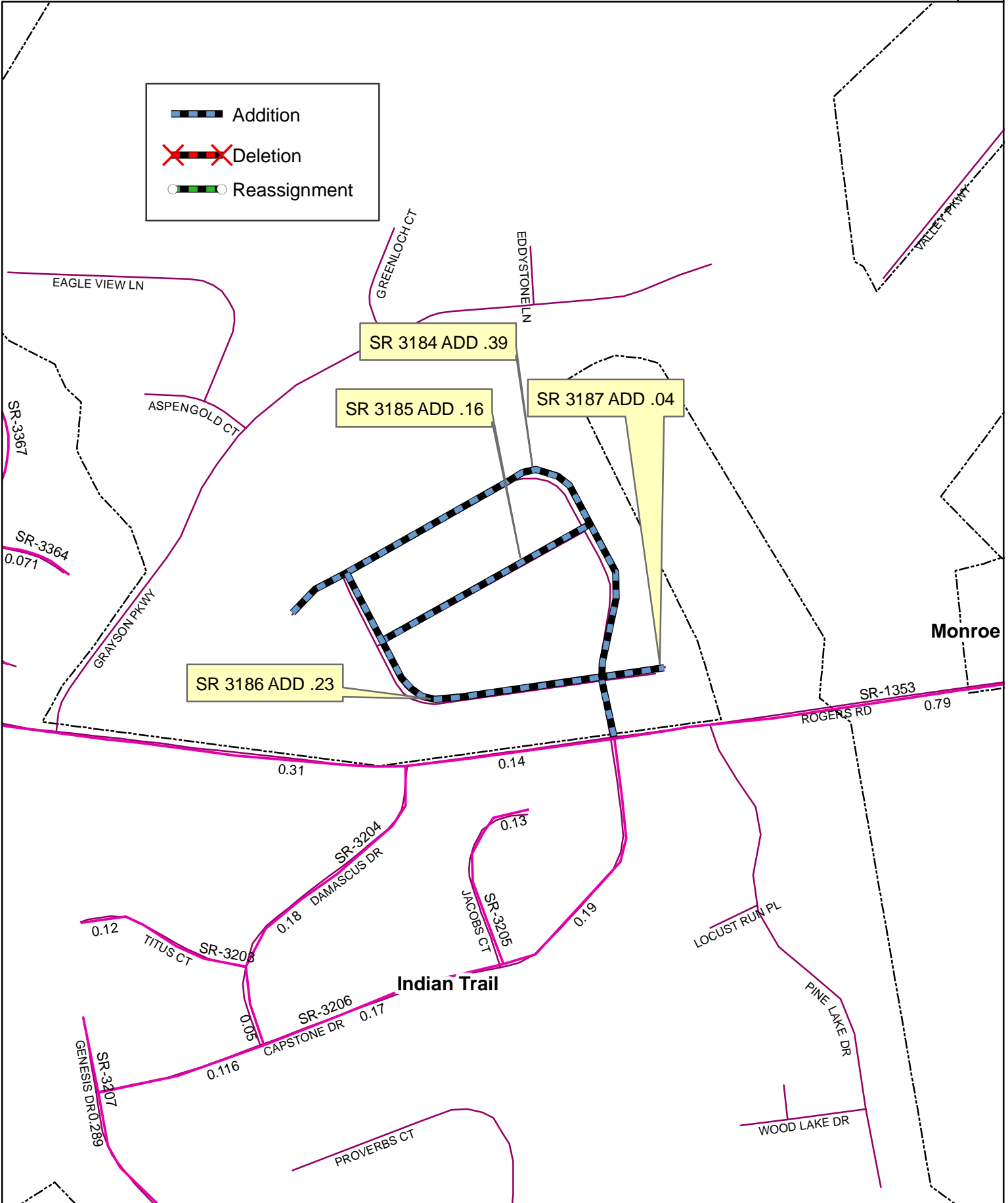
SR #: 3184 3185 3186 3187 _____

Approval Date: 12/11/08

Map Date: 12/29/08



 Addition
 Deletion
 Reassignment



Source: XXXXXXXXX

NAME: GBW

SCALE: XXX

Map: X