



STATE OF NORTH CAROLINA
DEPARTMENT OF TRANSPORTATION

MICHAEL F. EASLEY
GOVERNOR

Thursday, 13 November, 2008

LYNDO TIPPETT
SECRETARY

MEMORANDUM TO: Mr. Barry S. Moose, PE
Division Engineer
Division 10

FROM: Information, Mapping, and Graphics Unit

SUBJECT: 2008 District 2 Road Sytem Changes

The Road Inventory Information Section has been authorized to make the following changes to the state road system as indicated below. We request that you make similar changes to the related maps and files in your Division and District offices, and install appropriate road number signs if necessary. We have updated our records and county maps accordingly. If our system changes do not conform to the actual conditions in the field, please return this memorandum with recommendations.

Municipality	County	Approval Date
CHARLOTTE	MECKLENBURG	9/4/2008

Inquires about changes should be referred to one of the following: Ron Tucker at (919) 212-6080 or Tom Schroder at (919) 212-6090. If you have further questions, please contact Hardee Cox, Road Inventory Information Section Manager at (919) 212-6060. Thank you for your assistance.

HRC
enclosures ()

cc: BSIP
Bridge Maintenance
Division Right of Way
GIS
Pavement Management
Permit Unit
State Road Maintenance
Traffic Engineering
Traffic Surveys

MAILING ADDRESS:
NC DEPARTMENT OF TRANSPORTATION
INFORMATION, MAPPING AND GRAPHICS UNIT
1587 MAIL SERVICE CENTER
RALEIGH NC 27699-1587



LOCATION:
3401 CARL SANDBURG CT.
RALEIGH, NC 27610

2008 ROAD SYSTEM CHANGES

MUNICIPALITY	COUNTY	APPROVAL DATE	NEW NUMBER	EXISTING NUMBER	STREET NAME	LENGTH (miles)	TYPE OF CHANGE	REMARKS (See Attached Map)
CHARLOTTE	MECKLENBURG	9/4/2008		SR 1959		0.10	SYSTEM DELETION VIA MUNICIPAL AGREEMENT	MAP , SEGMENT
CHARLOTTE	MECKLENBURG	9/4/2008		SR 1782		0.27	SYSTEM DELETION VIA MUNICIPAL AGREEMENT	MAP , SEGMENT
CHARLOTTE	MECKLENBURG	9/4/2008		SR 1833		0.20	SYSTEM DELETION VIA MUNICIPAL AGREEMENT	MAP , SEGMENT
CHARLOTTE	MECKLENBURG	9/4/2008		SR 1834		0.17	SYSTEM DELETION VIA MUNICIPAL AGREEMENT	MAP , SEGMENT
CHARLOTTE	MECKLENBURG	9/4/2008		SR 1835		0.20	SYSTEM DELETION VIA MUNICIPAL AGREEMENT	MAP , SEGMENT
CHARLOTTE	MECKLENBURG	9/4/2008		SR 1845		0.44	SYSTEM DELETION VIA MUNICIPAL AGREEMENT	MAP , SEGMENT
CHARLOTTE	MECKLENBURG	9/4/2008		SR 1952		0.16	SYSTEM DELETION VIA MUNICIPAL AGREEMENT	MAP , SEGMENT
CHARLOTTE	MECKLENBURG	9/4/2008		SR 1624		0.94	SYSTEM DELETION VIA MUNICIPAL AGREEMENT	MAP , SEGMENT
CHARLOTTE	MECKLENBURG	9/4/2008		SR 1954		0.13	SYSTEM DELETION VIA MUNICIPAL AGREEMENT	MAP , SEGMENT
CHARLOTTE	MECKLENBURG	9/4/2008		SR 5750		0.16	SYSTEM DELETION VIA MUNICIPAL AGREEMENT	MAP , SEGMENT
CHARLOTTE	MECKLENBURG	9/4/2008		SR 1978		0.16	SYSTEM DELETION VIA MUNICIPAL AGREEMENT	MAP , SEGMENT
CHARLOTTE	MECKLENBURG	9/4/2008		SR 1986		0.08	SYSTEM DELETION VIA MUNICIPAL AGREEMENT	MAP , SEGMENT
CHARLOTTE	MECKLENBURG	9/4/2008		SR 1987		0.27	SYSTEM DELETION VIA MUNICIPAL AGREEMENT	MAP , SEGMENT

MUNICIPALITY	COUNTY	APPROVAL DATE	NEW NUMBER	EXISTING NUMBER	STREET NAME	LENGTH (miles)	TYPE OF CHANGE	REMARKS (See Attached Map)
CHARLOTTE	MECKLENBURG	9/4/2008		SR 1988		0.08	SYSTEM DELETION VIA MUNICIPAL AGREEMENT	MAP , SEGMENT
CHARLOTTE	MECKLENBURG	9/4/2008		SR 1989		0.02	SYSTEM DELETION VIA MUNICIPAL AGREEMENT	MAP , SEGMENT
CHARLOTTE	MECKLENBURG	9/4/2008		SR 5748		0.25	SYSTEM DELETION VIA MUNICIPAL AGREEMENT	MAP , SEGMENT
CHARLOTTE	MECKLENBURG	9/4/2008		SR 5749		0.12	SYSTEM DELETION VIA MUNICIPAL AGREEMENT	MAP , SEGMENT
CHARLOTTE	MECKLENBURG	9/4/2008		SR 1953		0.22	SYSTEM DELETION VIA MUNICIPAL AGREEMENT	MAP , SEGMENT

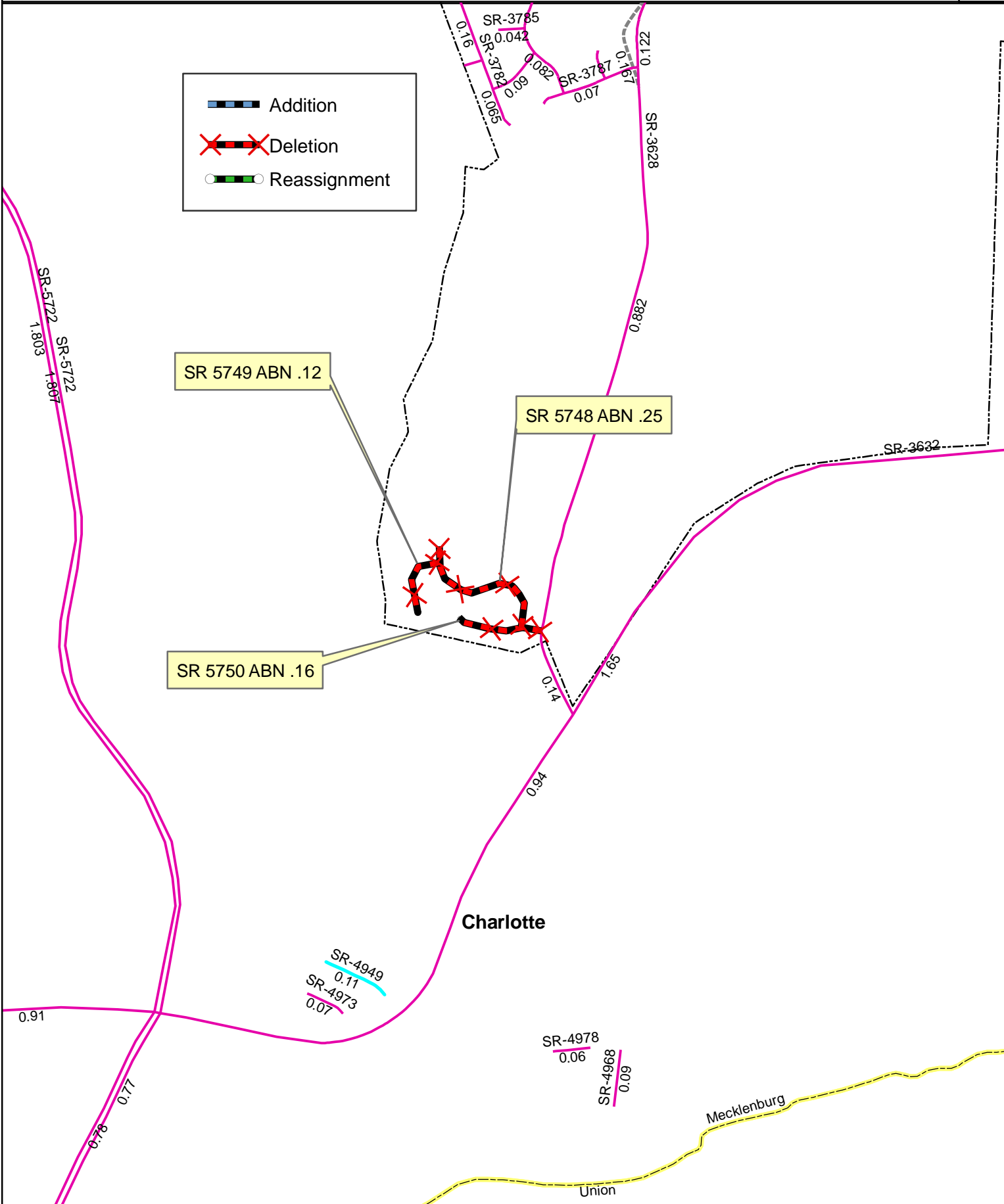
MUN AGR: 59/1003/09-08 CO: MECKLENBURG SR #: 5748 5749 5750 _____

Approval Date: 09/04/08 Map Date: 10/07/08 _____



Legend:

- Addition
- Deletion
- Reassignment



Source: XXXXXXXXX

NAME: GBW

SCALE: XXX

Map: X