



STATE OF NORTH CAROLINA
DEPARTMENT OF TRANSPORTATION

MICHAEL F. EASLEY
GOVERNOR

Tuesday, July 15, 2008

LYNDO TIPPETT
SECRETARY

MEMORANDUM TO: Mr. H. Allen Pope, PE
Division Engineer
Division 3

FROM: Information, Mapping, and Graphics Unit

SUBJECT: 2008 District 1 Road System Changes

The Road Inventory Information Section has been authorized to make the following changes to the state road system as indicated below. We request that you make similar changes to the related maps and files in your Division and District offices, and install appropriate road number signs if necessary. We have updated our records and county maps accordingly. If our system changes do not conform to the actual conditions in the field, please return this memorandum with recommendations.

Petition Number	County	Approval Date
48680	PENDER	6/5/2008

Inquires about changes should be referred to one of the following: Ron Tucker at (919) 212-6080 or Tom Schroder at (919) 212-6090. If you have further questions, please contact Hardee Cox, Road Inventory Information Section Manager at (919) 212-6060. Thank you for your assistance.

HRC
enclosures ()

- cc: BSIP
Bridge Maintenance
Division Right of Way
GIS
Pavement Management
Permit Unit
State Road Maintenance
Traffic Engineering
Traffic Surveys

2008 ROAD SYSTEM CHANGES

PETITION NUMBER	COUNTY	APPROVAL DATE	NEW NUMBER	EXISTING NUMBER	STREET NAME	LENGTH (miles)	TYPE OF CHANGE	REMARKS (See Attached Map)
48680	PENDER	6/5/2008	SR 1749		POST OAK CT	0.05	SYSTEM ADDITION VIA PETITION	MAP , SEGMENT
48680	PENDER	6/5/2008	SR 1748		SWEETBAY CT	0.03	SYSTEM ADDITION VIA PETITION	MAP , SEGMENT
48680	PENDER	6/5/2008	SR 1747		LAUREL OAK CT	0.03	SYSTEM ADDITION VIA PETITION	MAP , SEGMENT
48680	PENDER	6/5/2008	SR 1746		SPANISH MOSS CT	0.02	SYSTEM ADDITION VIA PETITION	MAP , SEGMENT

PETITION: 48680

CO: PENDER

SR #: 1746 1747 1748 1749 _____

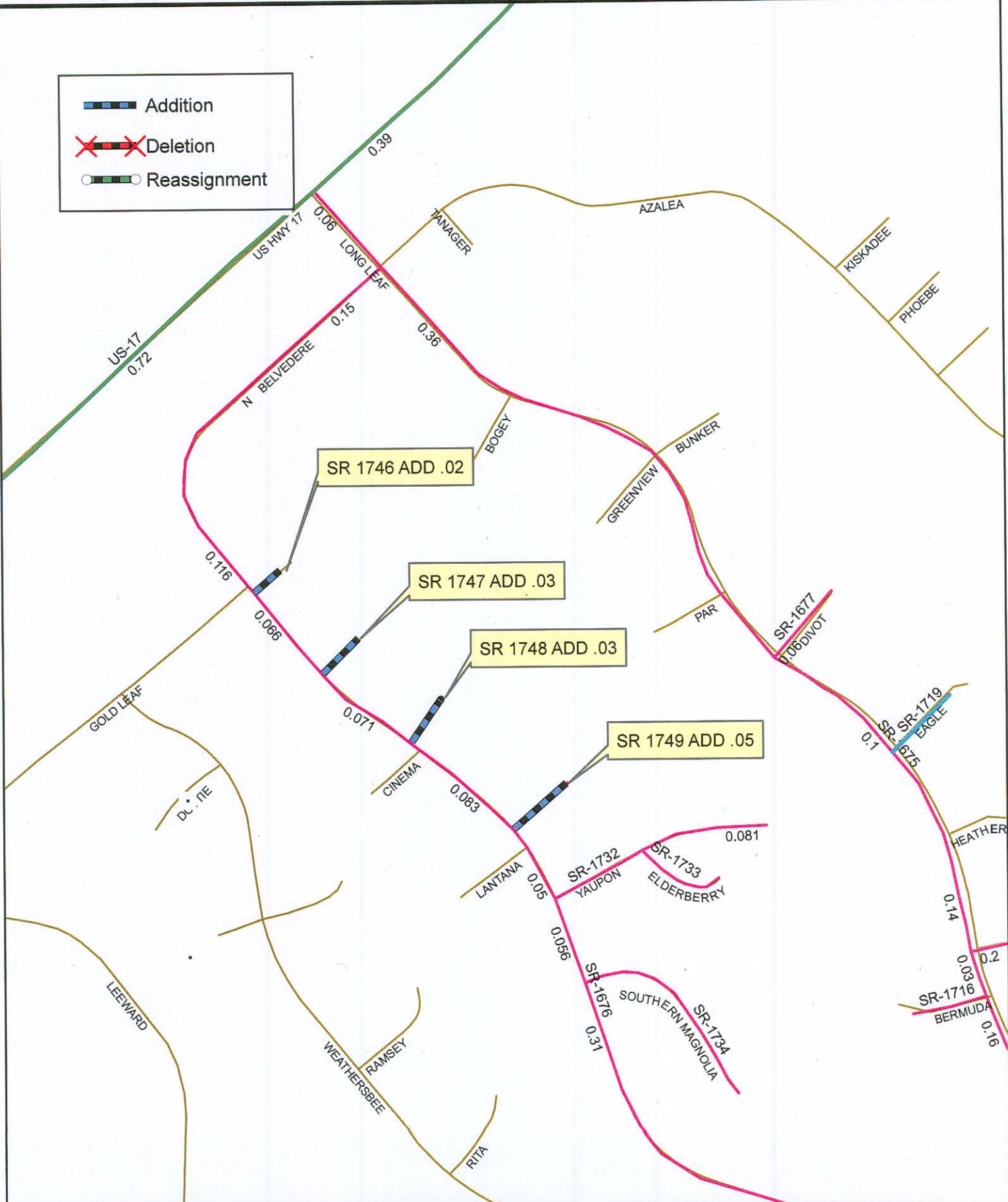
Approval Date: 06/05/08

Map Date: 07/15/08



Legend:

- Addition
- Deletion
- Reassignment



Source: XXXXXXXXX

NAME: GBW

SCALE: XXX

Map: X