



STATE OF NORTH CAROLINA
DEPARTMENT OF TRANSPORTATION

MICHAEL F. EASLEY
GOVERNOR

Thursday, February 15, 2007

LYNDO TIPPETT
SECRETARY

MEMORANDUM TO: Mr. Barry S. Moose, PE
Division Engineer
Division 10

FROM: L.C. Smith
GIS Director

SUBJECT: 2006 District 1 Road System Changes **-REVISED**

The Road Inventory Section has been authorized to make the following changes to the state road system as indicated below. We request that you make similar changes to the related maps and files in your Division and District offices, and install appropriate road number signs if necessary. We have updated our records and county maps accordingly. If our system changes do not conform to the actual conditions in the field, please return this memorandum with recommendations.

| TIP Number | County | Approval Date |
|-------------------|----------|---------------|
| U-2009B (PARTIAL) | CABARRUS | 2/2/2007 |

Inquires about secondary road petition changes should be referred to Ron Tucker, Secondary Roads Group Supervisor at (919) 212-6080. Inquires about TIP Project changes should be referred to Tom Schroeder, Primary Highway Group Supervisor at (919) 212-6074. If you have further questions, please contact Hardee Cox, Road Inventory Manager at (919) 212-6060. Thank you for your assistance.

LCS/hrc
enclosures ()

cc: BSIP
Bridge Maintenance
Division Right of Way
Pavement Management
Permit Unit
State Road Maintenance
Traffic Engineering
Traffic Surveys

MAILING ADDRESS:
NC DEPARTMENT OF TRANSPORTATION
GEOGRAPHIC INFORMATION SYSTEMS
1587 MAIL SERVICE CENTER
RALEIGH NC 27699-1587

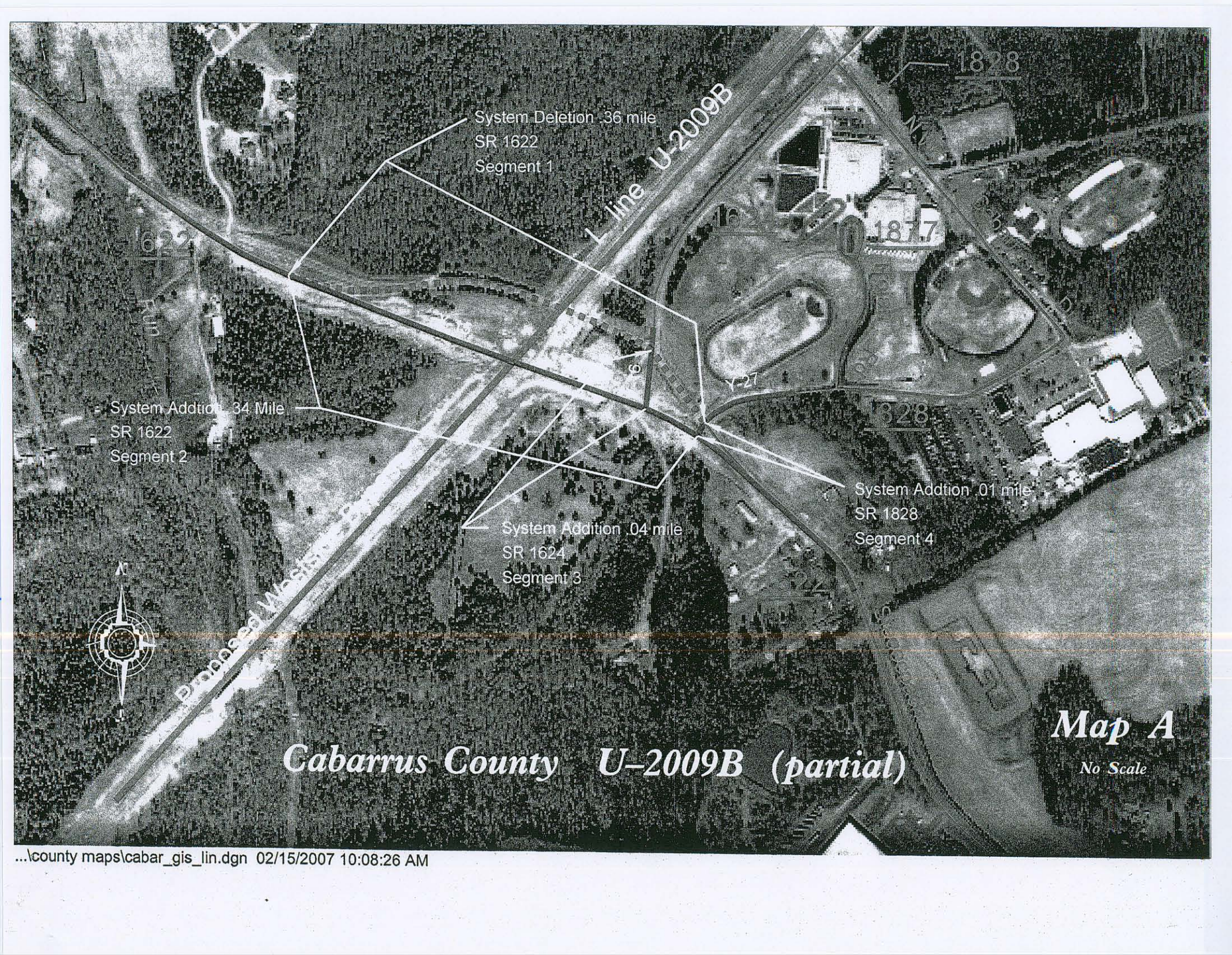


DELIVERY ADDRESS:
3401 CARL SANDBURG CT.
RALEIGH, NC 27610
PHONE: (919) 212-6000
FAX: (919) 212-5999

www.ncdot.org/it/gis

2006 ROAD SYSTEM CHANGES

| TIP NUMBER | COUNTY | APPROVAL DATE | NEW NUMBER | EXISTING NUMBER | STREET NAME | LENGTH (miles) | TYPE OF CHANGE | REMARKS (See Attached Map) |
|------------|----------|---------------|------------|-----------------|-------------|----------------|-----------------------------|----------------------------|
| U-2009B | CABARRUS | 2/2/2007 | | SR 1622 | | 0.36 | SYSTEM DELETION VIA PROJECT | MAP A, SEGMENT 1 |
| U-2009B | CABARRUS | 2/2/2007 | | SR 1622 | | 0.34 | SYSTEM ADDITION VIA PROJECT | MAP A, SEGMENT 2 |
| U-2009B | CABARRUS | 2/2/2007 | | SR 1624 | | 0.04 | SYSTEM ADDITION VIA PROJECT | MAP A, SEGMENT 3 |
| U-2009B | CABARRUS | 2/2/2007 | | SR 1828 | | 0.01 | SYSTEM ADDITION VIA PROJECT | MAP A, SEGMENT 4 |



System Deletion .36 mile
SR 1622
Segment 1

System Addition .34 Mile
SR 1622
Segment 2

System Addition .04 mile
SR 1624
Segment 3

System Addition .01 mile
SR 1828
Segment 4

L line U-2009B



Cabarrus County U-2009B (partial)

Map A
No Scale