



STATE OF NORTH CAROLINA
DEPARTMENT OF TRANSPORTATION

MICHAEL F. EASLEY
GOVERNOR

Monday, December 31, 2007

LYNDO TIPPETT
SECRETARY

MEMORANDUM TO: Mr. J. Wally Bowman , PE
Division Engineer
Division 5

FROM: Information, Mapping, and Graphics Unit

SUBJECT: 2007 District 3 Road System Changes

The Road Inventory Information Section has been authorized to make the following changes to the state road system as indicated below. We request that you make similar changes to the related maps and files in your Division and District offices, and install appropriate road number signs if necessary. We have updated our records and county maps accordingly. If our system changes do not conform to the actual conditions in the field, please return this memorandum with recommendations.

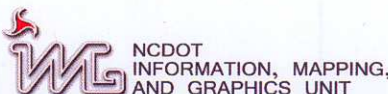
TIP Number	County	Approval Date
U-2527	VANCE	12/31/2006

Inquires about changes should be referred to one of the following: Ron Tucker at (919) 212-6080 or Tom Schroder at (919) 212-6090. If you have further questions, please contact Hardee Cox, Road Inventory Information Section Manager at (919) 212-6060. Thank you for your assistance.

HRC
enclosures ()

cc: BSIP
Bridge Maintenance
Division Right of Way
GIS
Pavement Management
Permit Unit
State Road Maintenance
Traffic Engineering
Traffic Surveys

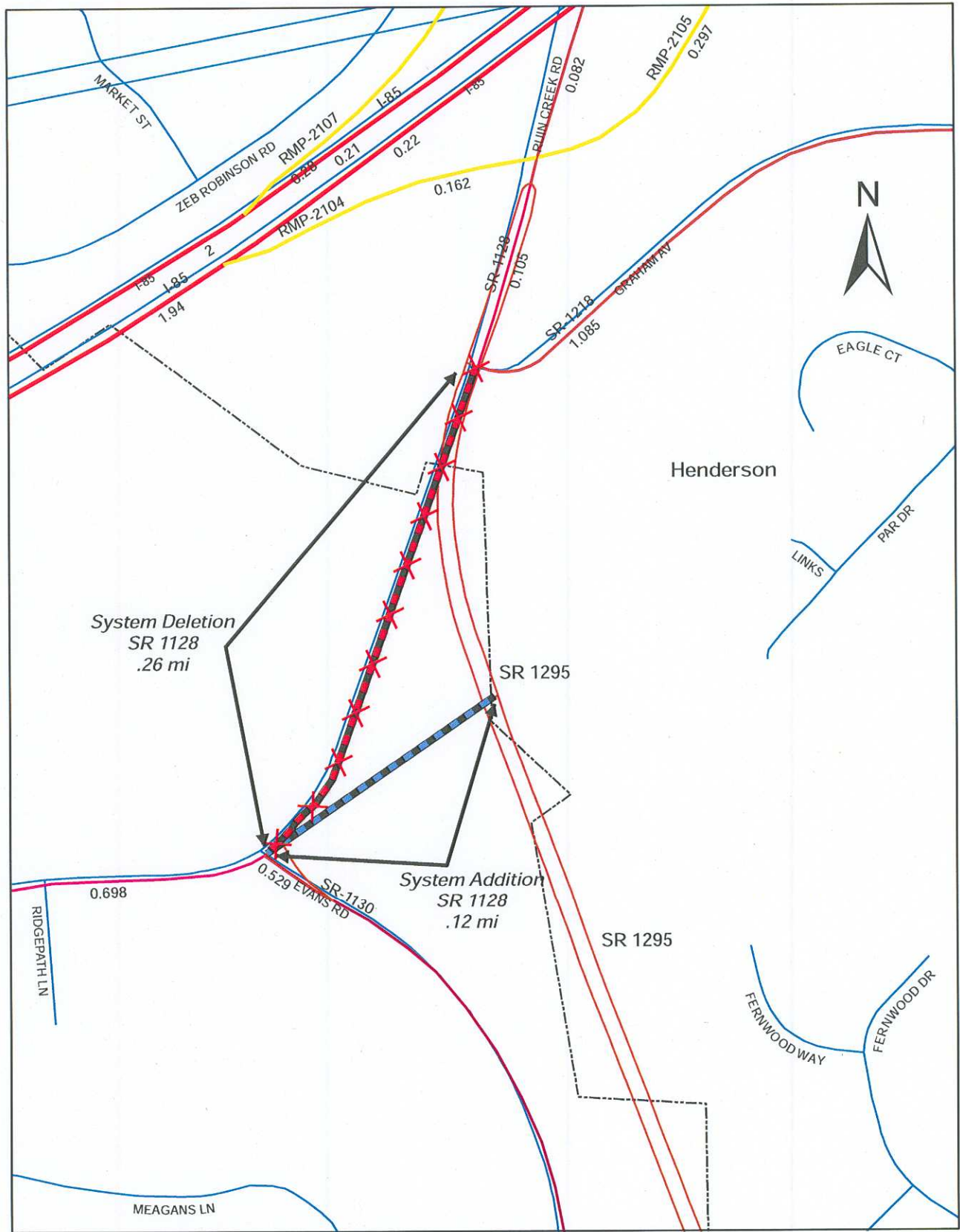
MAILING ADDRESS:
NC DEPARTMENT OF TRANSPORTATION
INFORMATION, MAPPING AND GRAPHICS UNIT
1587 MAIL SERVICE CENTER
RALEIGH NC 27699-1587



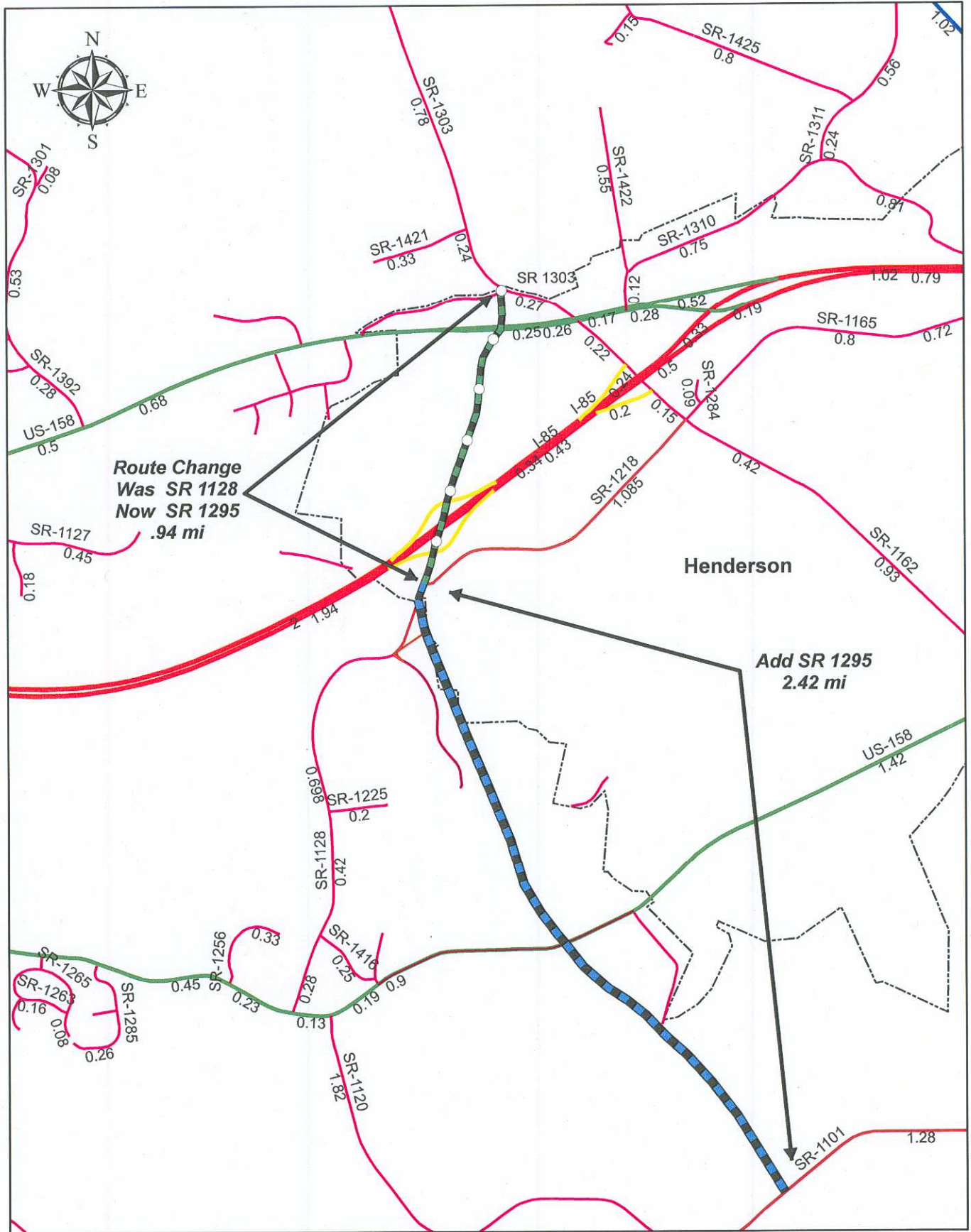
LOCATION:
3401 CARL SANDBURG CT.
RALEIGH, NC 27610

2007 ROAD SYSTEM CHANGES

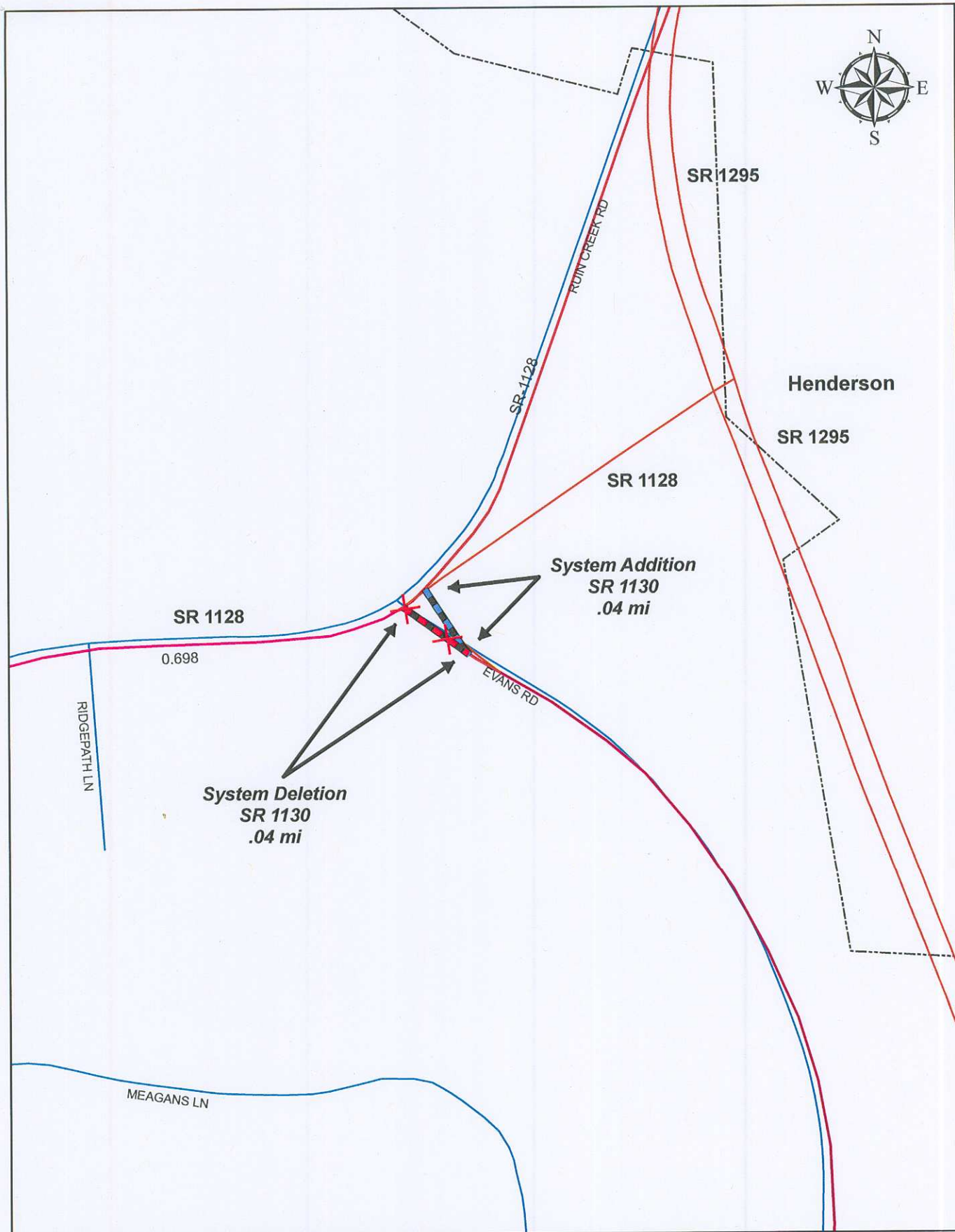
TIP NUMBER	COUNTY	APPROVAL DATE	NEW NUMBER	EXISTING NUMBER	STREET NAME	LENGTH (miles)	TYPE OF CHANGE	REMARKS (See Attached Map)
U-2527	VANCE	12/31/2006		SR 1128		0.26	SYSTEM DELETION VIA PROJECT	MAP A, SEGMENT
U-2527	VANCE	12/31/2006		SR 1128		0.12	SYSTEM ADDITION VIA PROJECT	MAP A, SEGMENT
U-2527	VANCE	12/31/2006	SR 1295	SR 1128	RUN CREEK RD	0.94	NUMBER REASSIGNMENT VIA PROJECT	MAP B, SEGMENT
U-2527	VANCE	12/31/2006	SR 1295			2.42	SYSTEM ADDITION VIA PROJECT	MAP B, SEGMENT
U-2527	VANCE	12/31/2006		SR 1130	EVANS ROAD	0.04	SYSTEM DELETION VIA PROJECT	MAP C, SEGMENT
U-2527	VANCE	12/31/2006		SR 1130	EVANS ROAD	0.04	SYSTEM ADDITION VIA PROJECT	MAP C, SEGMENT



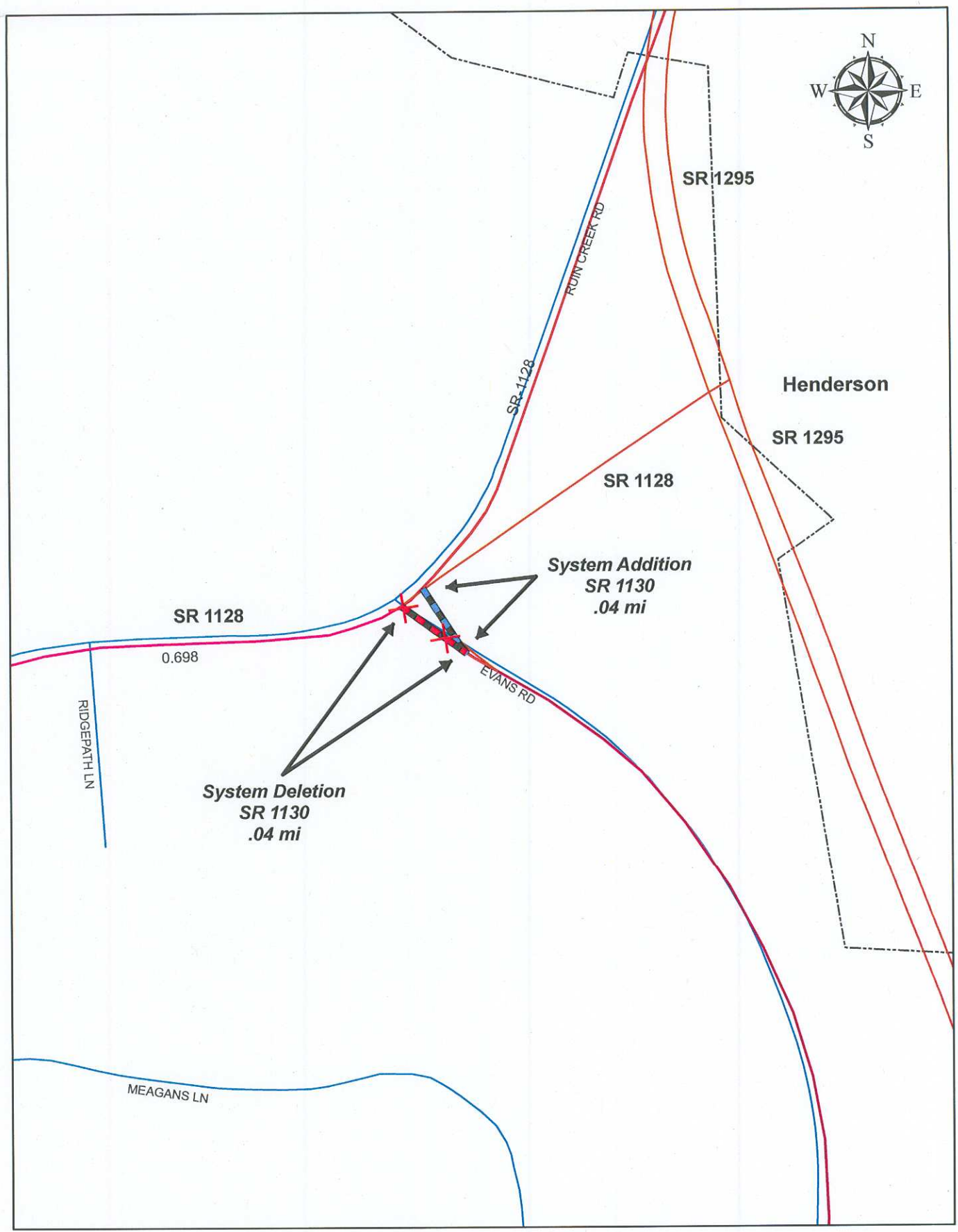
VANCE COUNTY
U-2527
Map "A"



VANCE COUNTY
U-2527
Map "B"



VANCE COUNTY
U-2527
Map "C"



VANCE COUNTY
U-2527
Map "C"