



STATE OF NORTH CAROLINA
DEPARTMENT OF TRANSPORTATION

Beverly Eaves Perdue
GOVERNOR

Friday, October 01, 2010

EUGENE A. CONTI, JR.
SECRETARY

MEMORANDUM TO: Mr. Barry S. Moose, PE
Division Engineer
Division 10

FROM: Information, and Mapping Unit

SUBJECT: 2006 District 2 Road System Changes

The Road Inventory Information Section has been authorized to make the following changes to the state road system as indicated below. We request that you make similar changes to the related maps and files in your Division and District offices, and install appropriate road number signs if necessary. We have updated our records and county maps accordingly. If our system changes do not conform to the actual conditions in the field, please return this memorandum with recommendations.

Petition Number	County	Approval Date
48010	MECKLENBURG	10/5/2006

Inquires about changes should be referred to one of the following: For Primary Roads call Paulette Smith at (919)-212-6100, and for Secondary Roads call Ron Tucker at (919)-212-6085. Thank you for your assistance.

JLC
enclosures ()

- cc: BSIP
Bridge Maintenance
Division Right of Way
GIS
Pavement Management
Permit Unit
State Road Maintenance
Traffic Engineering
Traffic Surveys

2006 ROAD SYSTEM CHANGES

PETITION NUMBER	COUNTY	APPROVAL DATE	NEW NUMBER	EXISTING NUMBER	STREET NAME	LENGTH (miles)	TYPE OF CHANGE	REMARKS (See Attached Map)
48010	MECKLENBURG	10/5/2006	SR 5862		RED HOLLY CT	0.10	SYSTEM ADDITION VIA PETITION	MAP , SEGMENT
48010	MECKLENBURG	10/5/2006	SR 5861		LAUREL TWIG CT	0.10	SYSTEM ADDITION VIA PETITION	MAP , SEGMENT
48010	MECKLENBURG	10/5/2006	SR 5860		CEDAR POST LN	0.24	SYSTEM ADDITION VIA PETITION	MAP , SEGMENT
48010	MECKLENBURG	10/5/2006	SR 5859		BELL HOOK DRIVE	0.03	SYSTEM ADDITION VIA PETITION	MAP , SEGMENT

PETITION #: 48010

CO: Mecklenburg

SR #: 5859, 5860, 5861,

5862, _____,

_____, _____,

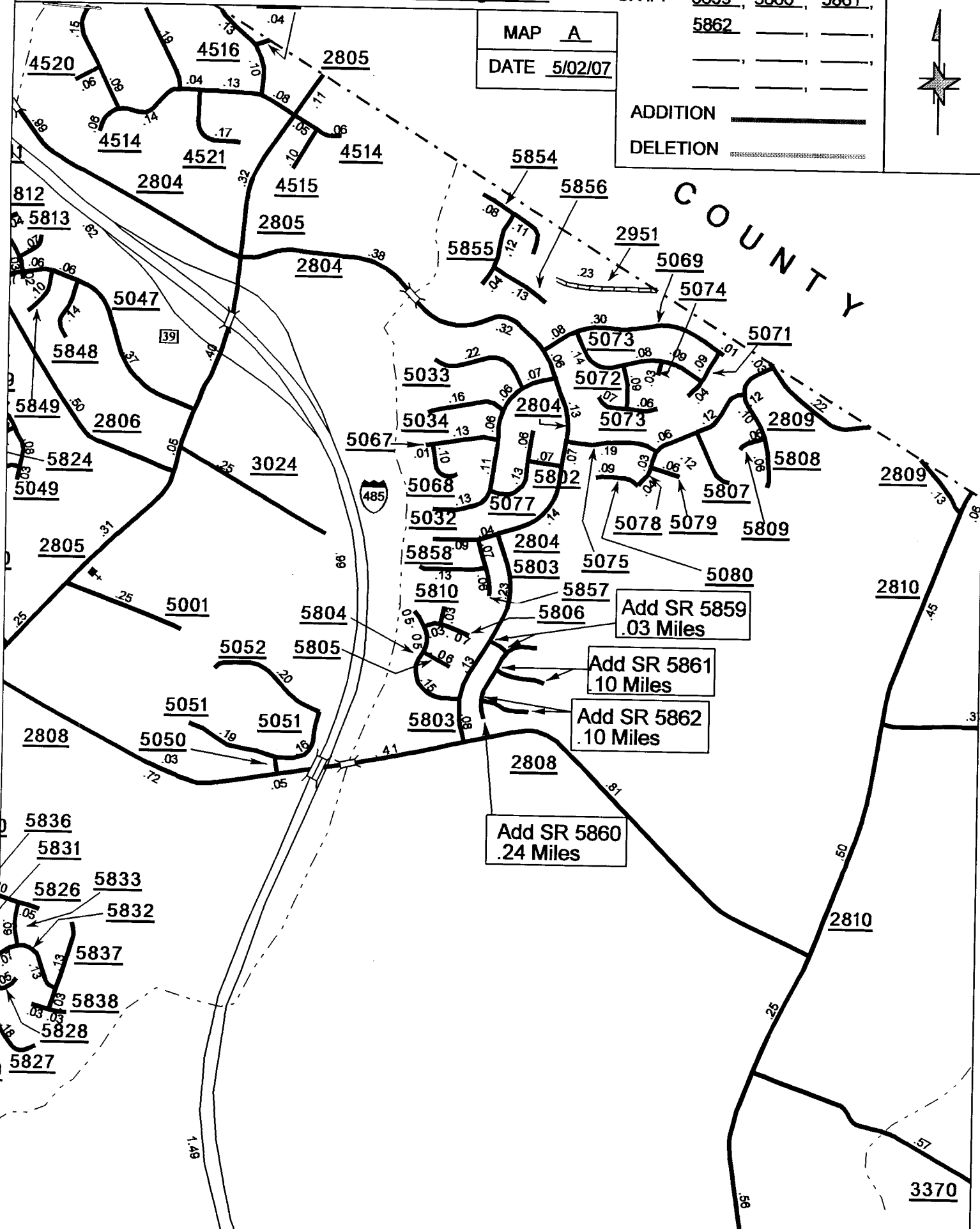
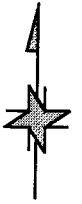
_____, _____,

ADDITION _____

DELETION _____

MAP A

DATE 5/02/07



Add SR 5859
.03 Miles

Add SR 5861
10 Miles

Add SR 5862
.10 Miles

Add SR 5860
.24 Miles

SOURCE: Plat

SHEET: 6 OF 8

NAME: LM

SCALE: 4:1