



STATE OF NORTH CAROLINA
DEPARTMENT OF TRANSPORTATION

BEVERLY EAVES PERDUE
GOVERNOR

Friday, September 03, 2010

EUGENE A. CONTI, JR.
SECRETARY

MEMORANDUM TO: Mr. Mike Mills, PE
Division Engineer
Division 7

FROM: John C. Farley, Manager
Geographic Information Systems Unit

SUBJECT: 2010 District 1 Road System Changes

The Data Conversion Group has been authorized to make the following changes to the state road system as indicated below. We request that you make similar changes to the related maps and files in your Division and District offices, and install appropriate road number signs if necessary. We have updated our records accordingly. If our system changes do not conform to the actual conditions in the field, please return this memorandum with recommendations.

Document Number	County	Approval Date
R-0942CA	ORANGE	10/2/2006

Inquiries about changes should be referred to the GIS Help Desk at (919) 707-2152.
Thank you for your assistance.

JCF

cc: BSIP
Bridge Maintenance
Division Right of Way
IMG
Pavement Management
Permit Unit
State Road Maintenance
Traffic Engineering
Traffic Surveys

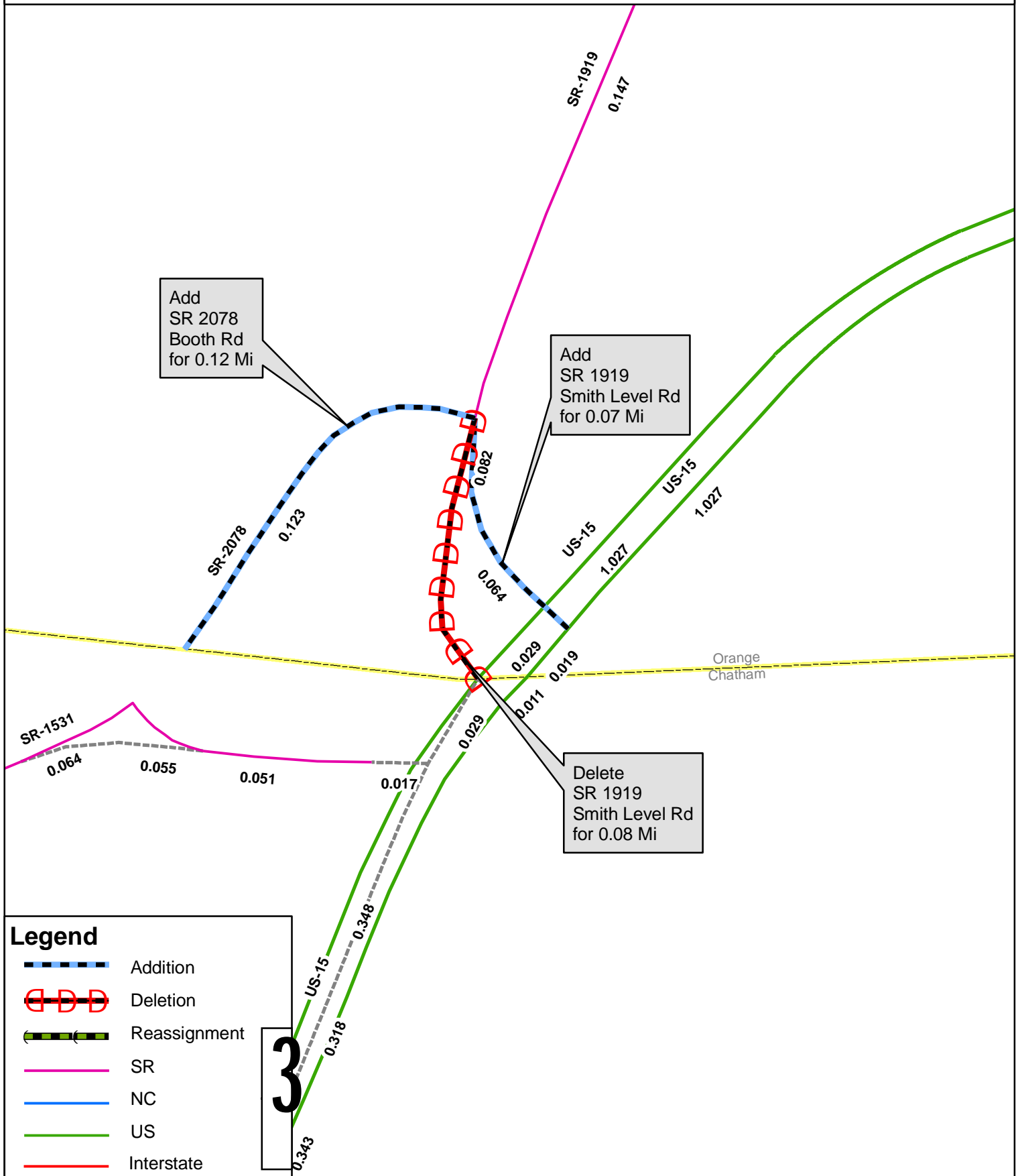
MAILING ADDRESS:
NC DEPARTMENT OF TRANSPORTATION
GEOGRAPHIC INFORMATION SYSTEMS
1521 MAIL SERVICE CENTER
RALEIGH NC 27699-1521


NCDOT
WWW.NCDOT.ORG/IT/GIS

Delivery Address:
41 01 CAPITAL BLVD.
RALEIGH, NC 27604
PHONE: (919) 707-2152
FAX: (919) 707-2214

2010 ROAD SYSTEM CHANGES

DOCUMENT NUMBER	COUNTY	APPROVAL DATE	NEW NUMBER	EXISTING NUMBER	STREET NAME	LENGT H	TYPE OF CHANGE	REMARKS (See Attached Map)
R-0942CA	ORANGE	10/2/2006	SR 2078		BOOTH ROAD	0.12	SYSTEM ADDITION - NEW VIA TIP	MAP , SEGMENT
R-0942CA	ORANGE	10/2/2006		SR 1919	SMITH LEVEL ROAD	0.08	SYSTEM DELETION VIA TIP	MAP , SEGMENT
R-0942CA	ORANGE	10/2/2006		SR 1919	SMITH LEVEL ROAD	0.07	SYSTEM ADDITION - EXISTING VIA TIP	MAP , SEGMENT



Legend

- Addition
- Deletion
- Reassignment
- SR
- NC
- US
- Interstate
- Ramp
- County Boundary

