



STATE OF NORTH CAROLINA  
DEPARTMENT OF TRANSPORTATION

MICHAEL F. EASLEY  
GOVERNOR

September 25, 2007

LYNDO TIPPETT  
SECRETARY

**MEMORANDUM TO:** Mr. Timothy Johnson, PE  
Division Engineer  
Division 8

**FROM:** L.C. Smith  
GIS Director

**SUBJECT:** 2007 District 2 Road System Changes

The Data Compilation Section has been authorized to make the following changes to the state road system as indicated below. We request that you make similar changes to the related maps and files in your Division and District offices, and install appropriate road number signs if necessary. We have updated our records and county maps accordingly. If our system changes do not conform to the actual conditions in the field, please return this memorandum with recommendations.

TIP Number	County	Approval Date
R-210B	MOORE	9/11/2006

Inquires about changes should be referred to one of the following: Ron Tucker (Div 3,6,7,8) at (919) 212-6080, Ron Nealy (Div 5,9,11,13,14) at (919) 212-5980, or Lori Mann (Div 1,2,4,10,12) at (919) 212-6075. If you have further questions, please contact Hardee Cox, Data Compilation Section Manger at (919) 212-6060. Thank you for your assistance.

LCS/hrc  
enclosures ( )

cc: BSIP  
Bridge Maintenance  
Division Right of Way  
Pavement Management  
Permit Unit  
State Road Maintenance  
Traffic Engineering  
Traffic Surveys

MAILING ADDRESS:  
NC DEPARTMENT OF TRANSPORTATION  
GEOGRAPHIC INFORMATION SYSTEMS  
1587 MAIL SERVICE CENTER  
RALEIGH NC 27699-1587

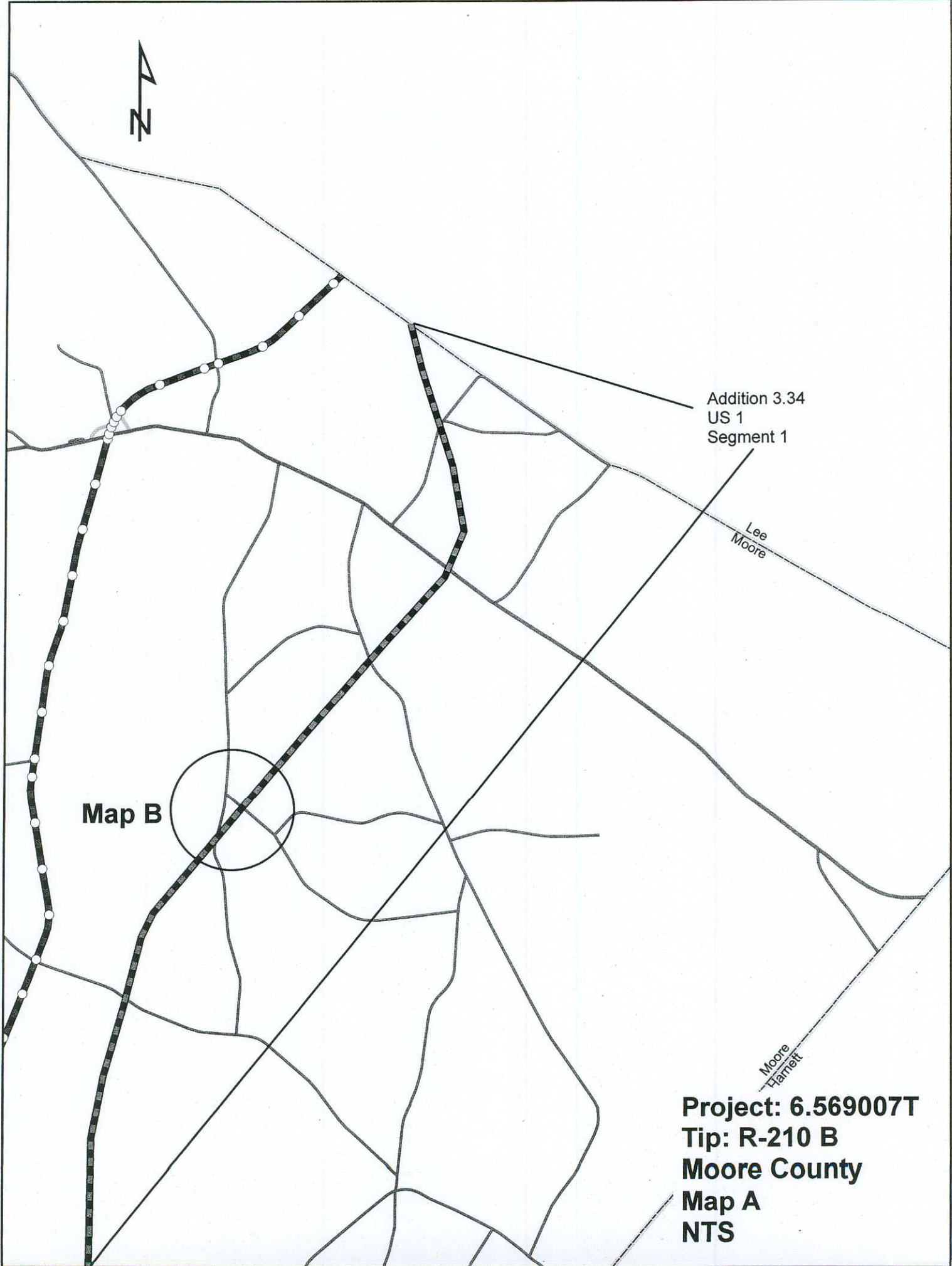


DELIVERY ADDRESS:  
3401 CARL SANDBURG CT.  
RALEIGH, NC 27610  
PHONE: (919) 212-6000  
FAX: (919) 212-5999

# 2007 ROAD SYSTEM CHANGES

TIP NUMBER	COUNTY	APPROVAL DATE	NEW NUMBER	EXISTING NUMBER	STREET NAME	LENGTH (miles)	TYPE OF CHANGE	REMARKS (See Attached Map)
R-210B	MOORE	9/11/2006		US 1		3.34	SYSTEM ADDITION VIA PROJECT	MAP A, SEGMENT 1
R-210B	MOORE	9/11/2006		SR 2005	ATKINS ROADS	0.31	SYSTEM ADDITION VIA PROJECT	MAP A, SEGMENT 2
R-210B	MOORE	9/11/2006	SR 2197	SR 2005	ATKINS ROADS	0.10	NUMBER REASSIGNMENT VIA PROJECT	MAP A, SEGMENT 5
R-210B	MOORE	9/11/2006		SR 2000	PAGE STORE ROAD	0.11	SYSTEM DELETION VIA PROJECT	MAP E, SEGMENT 7
R-210B	MOORE	9/11/2006	SR 2196	SR 2000	PAGE STORE ROAD	0.46	NUMBER REASSIGNMENT VIA PROJECT	MAP E, SEGMENT 8
R-210B	MOORE	9/11/2006	SR 2193	SR 2002	L COOPER ROAD	0.08	NUMBER REASSIGNMENT VIA PROJECT	MAP B, SEGMENT 9
R-210B	MOORE	9/11/2006	SR 2194	SR 2002	L COOPER ROAD	0.10	NUMBER REASSIGNMENT VIA PROJECT	MAP B, SEGMENT 10
R-210B	MOORE	9/11/2006		SR 2002	L COOPER ROAD	0.14	SYSTEM DELETION VIA PROJECT	MAP B, SEGMENT 11
R-210B	MOORE	9/11/2006		SR 2194		0.03	SYSTEM ADDITION VIA PROJECT	MAP A, SEGMENT 12
R-210B	MOORE	9/11/2006		SR 2193	L COOPER ROAD	0.03	SYSTEM ADDITION VIA PROJECT	MAP A, SEGMENT 15
R-210B	MOORE	9/11/2006	SR 2195	SR 2002	L COOPER ROAD	0.80	NUMBER REASSIGNMENT VIA PROJECT	MAP C, SEGMENT 17
R-210B	MOORE	9/11/2006	SR 2195			0.38	SYSTEM ADDITION VIA PROJECT	MAP C, SEGMENT 18
R-210B	MOORE	9/11/2006	SR 2002	SR 2099	L COOPER ROAD	1.00	NUMBER REASSIGNMENT VIA PROJECT	MAP C, SEGMENT 19

TIP NUMBER	COUNTY	APPROVAL DATE	NEW NUMBER	EXISTING NUMBER	STREET NAME	LENGTH (miles)	TYPE OF CHANGE	REMARKS (See Attached Map)
R-210B	MOORE	9/11/2006		SR 2004		0.14	SYSTEM DELETION VIA PROJECT	MAP B, SEGMENT 20
R-210B	MOORE	9/11/2006	SR 2193	SR 2002		0.03	SYSTEM DELETION VIA PROJECT	MAP B, SEGMENT 21
R-210B	MOORE	9/11/2006		SR 2002		0.03	SYSTEM DELETION VIA PROJECT	MAP B, SEGMENT 22
R-210B	MOORE	9/11/2006		SR 2002	L.COOPER ROAD	0.23	SYSTEM ADDITION VIA PROJECT	MAP C, SEGMENT 23
R-210B	MOORE	9/11/2006	SR 2002	SR 2004		0.17	NUMBER REASSIGNMENT VIA PROJECT	MAP C, SEGMENT 24
R-210B	MOORE	9/11/2006		SR 2005		0.17	SYSTEM DELETION VIA PROJECT	MAP D, SEGMENT 25
R-210B	MOORE	9/11/2006		SR 2005		0.03	SYSTEM DELETION VIA PROJECT	MAP D, SEGMENT 26
R-210B	MOORE	9/11/2006	SR 2197			0.03	SYSTEM ADDITION VIA PROJECT	MAP , SEGMENT 27



Addition 3.34  
US 1  
Segment 1

Lee  
Moore

Map B

Moore  
Hammett

**Project: 6.569007T**  
**Tip: R-210 B**  
**Moore County**  
**Map A**  
**NTS**

**Project: 6.569007T**  
**Tip: R-210 B**  
**Moore County**  
**Map B**  
**NTS**



Deletion .03  
SR 2002  
Segment 15

Number Change .08  
SR 2002 to SR 2193  
Segment 9

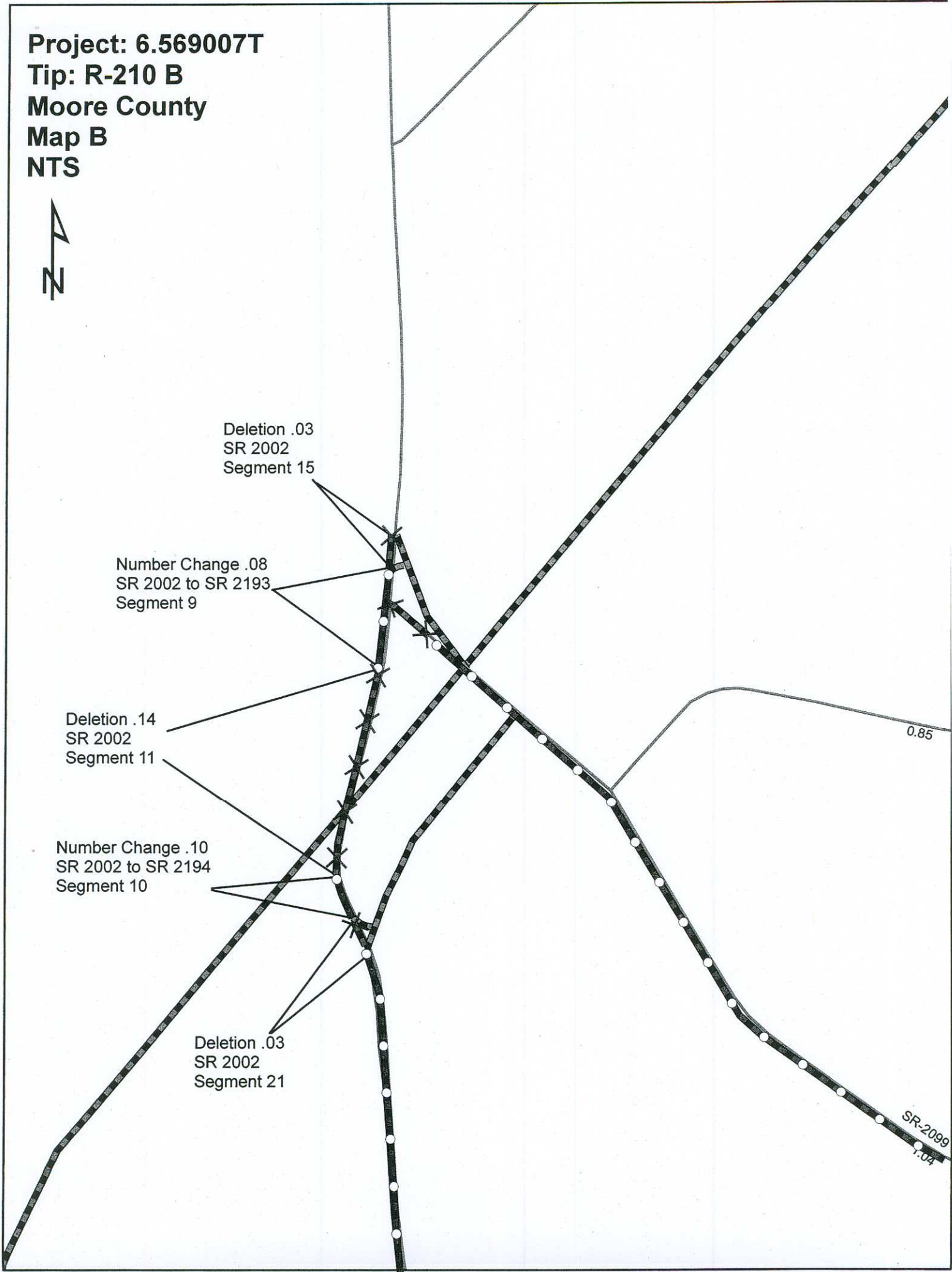
Deletion .14  
SR 2002  
Segment 11

Number Change .10  
SR 2002 to SR 2194  
Segment 10

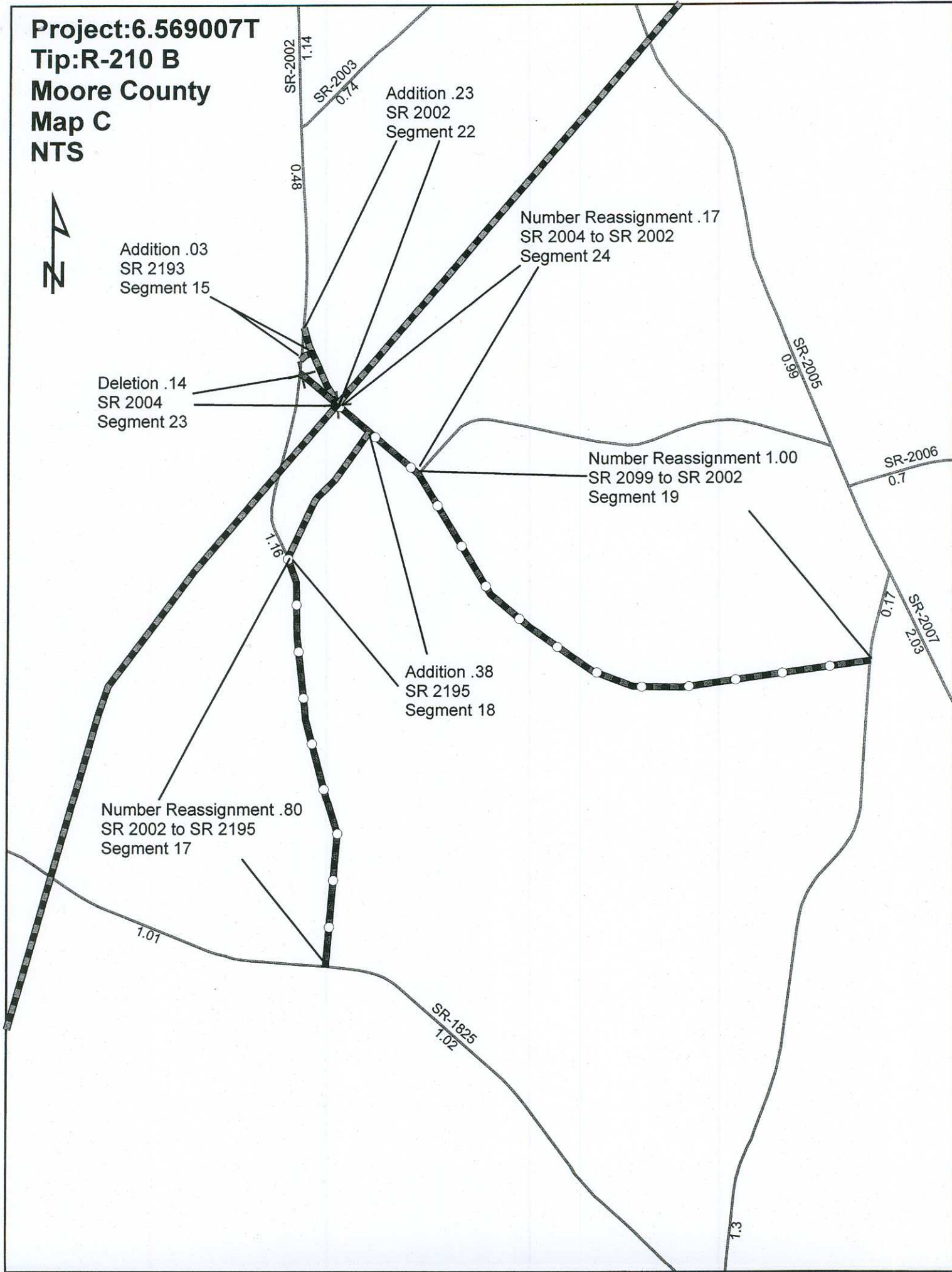
Deletion .03  
SR 2002  
Segment 21

0.85

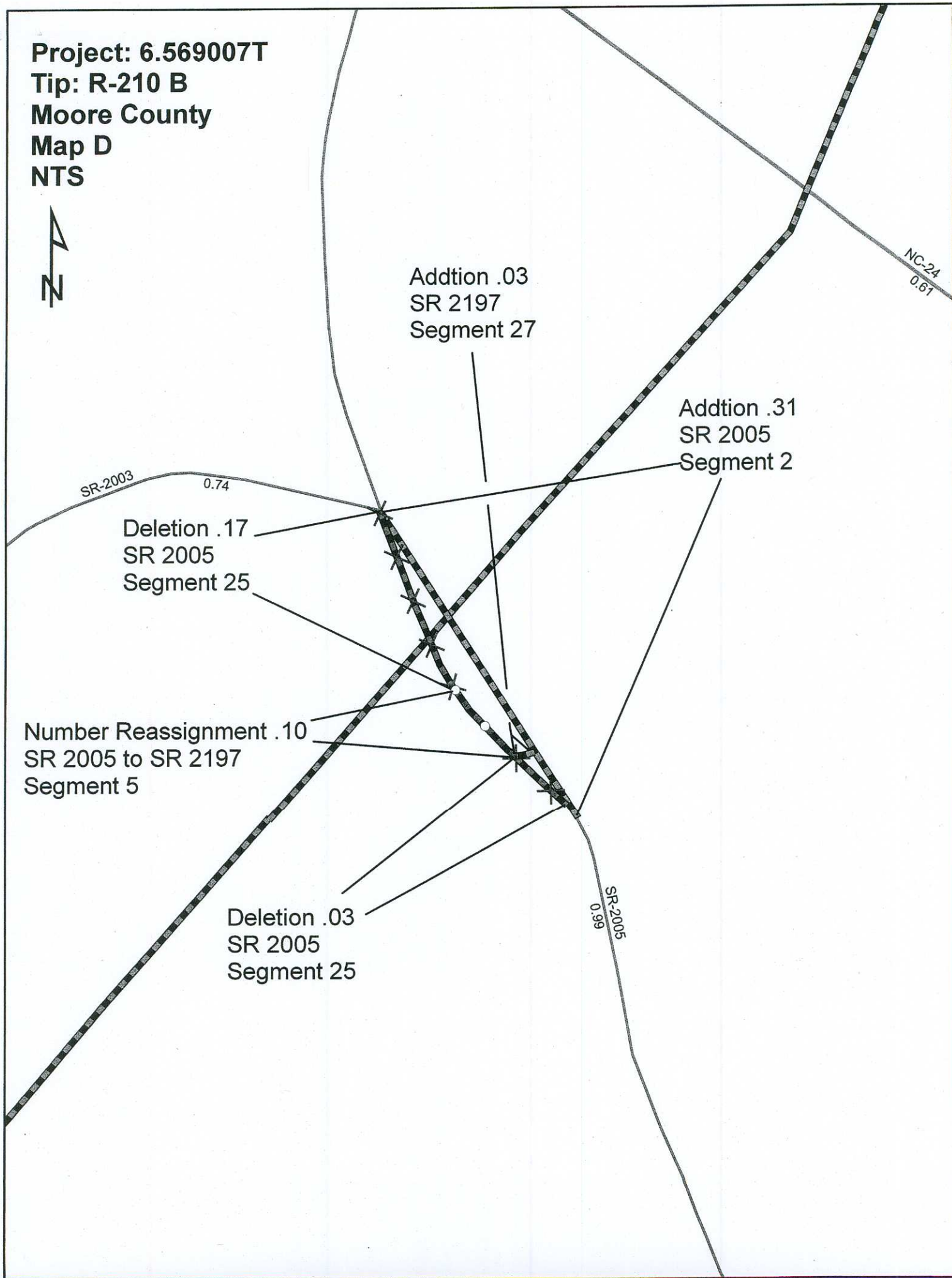
SR-2099  
1.04



**Project:6.569007T**  
**Tip:R-210 B**  
**Moore County**  
**Map C**  
**NTS**



**Project: 6.569007T**  
**Tip: R-210 B**  
**Moore County**  
**Map D**  
**NTS**



**Project: 6.569007**  
**Tip: R-210-B**  
**Moore County**  
**Map E**  
**NTS**



Deletion .11  
SR 2000  
Map E  
Segment 7

Number Reassignment .46  
SR 2000 to SR 2197  
Map E  
Segment 8

