



STATE OF NORTH CAROLINA
DEPARTMENT OF TRANSPORTATION

MICHAEL F. EASLEY
GOVERNOR

May 17, 2007

LYNDO TIPPETT
SECRETARY

MEMORANDUM TO: Mr. Richard E. Greene, Jr., P.E.
Division Engineer
Division 4

FROM: L.C. Smith
GIS Director

SUBJECT: 2006 District 3 Road System Changes

The Data Compilation Section has been authorized to make the following changes to the state road system as indicated below. We request that you make similar changes to the related maps and files in your Division and District offices, and install appropriate road number signs if necessary. We have updated our records and county maps accordingly. If our system changes do not conform to the actual conditions in the field, please return this memorandum with recommendations.

Petition Number	County	Approval Date
47967	JOHNSTON	9/7/2006

Inquires about changes should be referred to one of the following: Ron Tucker (Div 3,6,7,8) at (919) 212-6080, Ron Nealy (Div 5,9,11,13,14) at (919) 212-5980, or Lori Mann (Div 1,2,4,10,12) at (919) 212-6075. If you have further questions, please contact Hardee Cox, Data Compilation Section Manger at (919) 212-6060. Thank you for your assistance.

LCS/hrc
enclosures ()

cc: BSIP
Bridge Maintenance
Division Right of Way
Pavement Management
Permit Unit
State Road Maintenance
Traffic Engineering
Traffic Surveys

MAILING ADDRESS:
NC DEPARTMENT OF TRANSPORTATION
GEOGRAPHIC INFORMATION SYSTEMS
1587 MAIL SERVICE CENTER
RALEIGH NC 27699-1587



DELIVERY ADDRESS:
3401 CARL SANDBURG CT.
RALEIGH, NC 27610
PHONE: (919) 212-6000
FAX: (919) 212-5999

2006 ROAD SYSTEM CHANGES

PETITION NUMBER	COUNTY	APPROVAL DATE	NEW NUMBER	EXISTING NUMBER	STREET NAME	LENGTH (miles)	TYPE OF CHANGE	REMARKS (See Attached Map)
47967	JOHNSTON	9/7/2006		SR 2297 EXT	WINFRED DRIVE	0.37	SYSTEM ADDITION VIA PETITION	MAP A, SEGMENT 1
47967	JOHNSTON	9/7/2006	SR 3105		CATTLE FARM DRIVE	0.60	SYSTEM ADDITION VIA PETITION	MAP A, SEGMENT 2
47967	JOHNSTON	9/7/2006	SR 3106		FOX PEN DRIVE	0.24	SYSTEM ADDITION VIA PETITION	MAP A, SEGMENT 3
47967	JOHNSTON	9/7/2006	SR 3107		ALFRED COURT	0.15	SYSTEM ADDITION VIA PETITION	MAP A, SEGMENT 4
47967	JOHNSTON	9/7/2006	SR 3108		FOX CROSSING DRIVE	0.22	SYSTEM ADDITION VIA PETITION	MAP A, SEGMENT 5

PETITION #: 47967

CO: Johnston

SR #: 2297ex 3105, 3106,

3107 3108, _____,

_____, _____, _____,

_____, _____, _____,

_____, _____, _____,

_____, _____, _____,

_____, _____, _____,

_____, _____, _____,

_____, _____, _____,

_____, _____, _____,

_____, _____, _____,

_____, _____, _____,

_____, _____, _____,

_____, _____, _____,

_____, _____, _____,

_____, _____, _____,

_____, _____, _____,

_____, _____, _____,

_____, _____, _____,

_____, _____, _____,

_____, _____, _____,

_____, _____, _____,

_____, _____, _____,

_____, _____, _____,

_____, _____, _____,

_____, _____, _____,

_____, _____, _____,

_____, _____, _____,

_____, _____, _____,

_____, _____, _____,

_____, _____, _____,

_____, _____, _____,

_____, _____, _____,

_____, _____, _____,

_____, _____, _____,

_____, _____, _____,

_____, _____, _____,

_____, _____, _____,

_____, _____, _____,

_____, _____, _____,

_____, _____, _____,

_____, _____, _____,

_____, _____, _____,

_____, _____, _____,

_____, _____, _____,

_____, _____, _____,

_____, _____, _____,



_____, _____, _____,

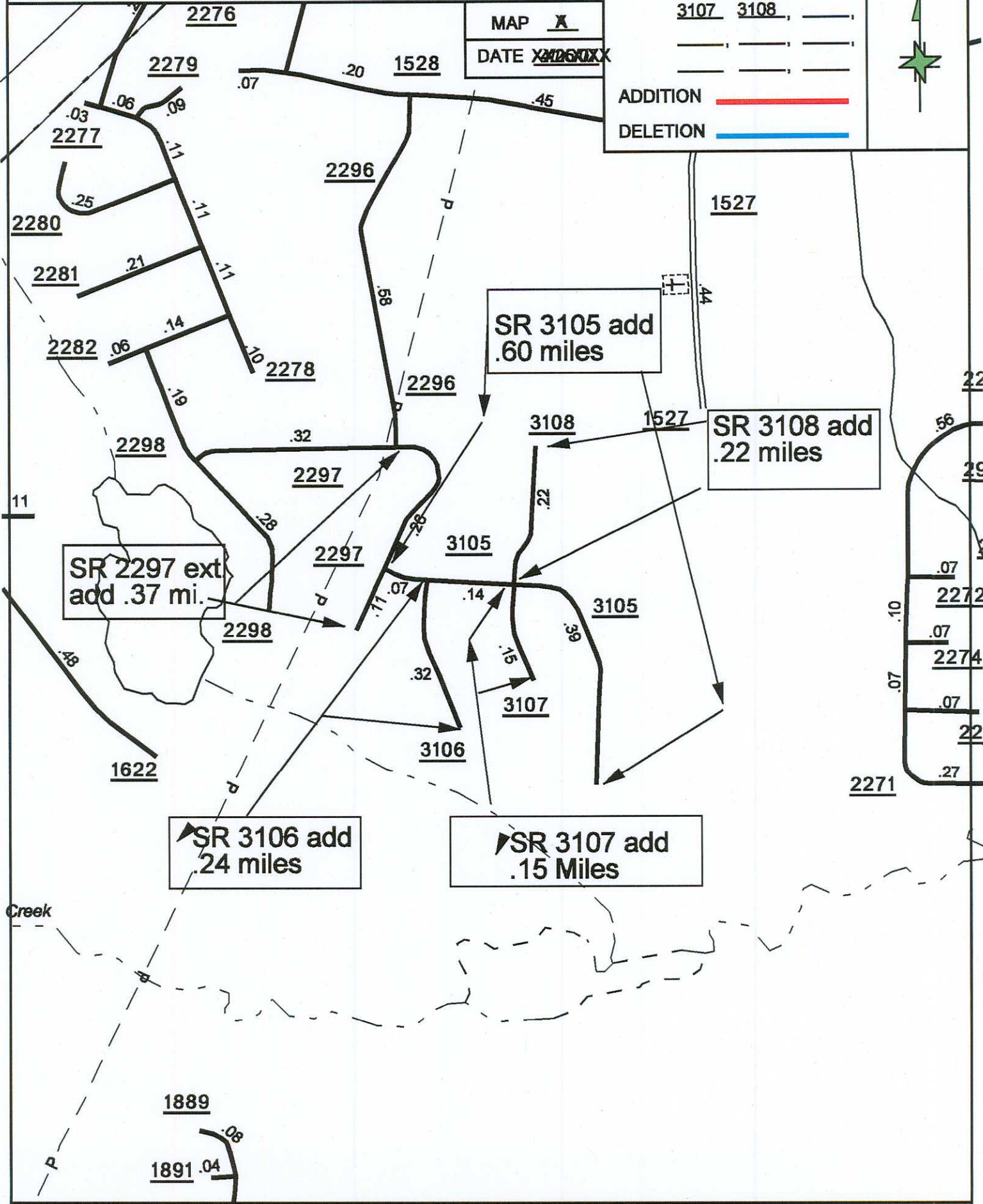
_____, _____, _____,

_____, _____, _____,

_____, _____, _____,

MAP
DATE X/26/00X

ADDITION 
DELETION 



SR 2297 ext
add .37 mi.

SR 3105 add
.60 miles

SR 3108 add
.22 miles

SR 3106 add
.24 miles

SR 3107 add
.15 Miles