



STATE OF NORTH CAROLINA
DEPARTMENT OF TRANSPORTATION

Beverly Eaves Perdue
GOVERNOR

Tuesday, September 28, 2010

EUGENE A. CONTI, JR.
SECRETARY

MEMORANDUM TO: Mr. Barry S. Moose, PE
Division Engineer
Division 10

FROM: Information, and Mapping Unit

SUBJECT: 2006 District 1 Road System Changes

The Road Inventory Information Section has been authorized to make the following changes to the state road system as indicated below. We request that you make similar changes to the related maps and files in your Division and District offices, and install appropriate road number signs if necessary. We have updated our records and county maps accordingly. If our system changes do not conform to the actual conditions in the field, please return this memorandum with recommendations.

Petition Number	County	Approval Date
47948	CABARRUS	8/3/2006

Inquires about changes should be referred to one of the following: For Primary Roads call Paulette Smith at (919)-212-6100, and for Secondary Roads call Ron Tucker at (919)-212-6085. Thank you for your assistance.

JLC
enclosures ()

- cc: BSIP
Bridge Maintenance
Division Right of Way
GIS
Pavement Management
Permit Unit
State Road Maintenance
Traffic Engineering
Traffic Surveys

2006 ROAD SYSTEM CHANGES

PETITION NUMBER	COUNTY	APPROVAL DATE	NEW NUMBER	EXISTING NUMBER	STREET NAME	LENGTH (miles)	TYPE OF CHANGE	REMARKS (See Attached Map)
47948	CABARRUS	8/3/2006	SR 2721		PONDVIEW COURT	0.07	SYSTEM ADDITION VIA PETITION	MAP , SEGMENT
47948	CABARRUS	8/3/2006	SR 2720		SCENIC PINE LANE	0.24	SYSTEM ADDITION VIA PETITION	MAP , SEGMENT

PETITION #: 47948

CO: Cabarrus

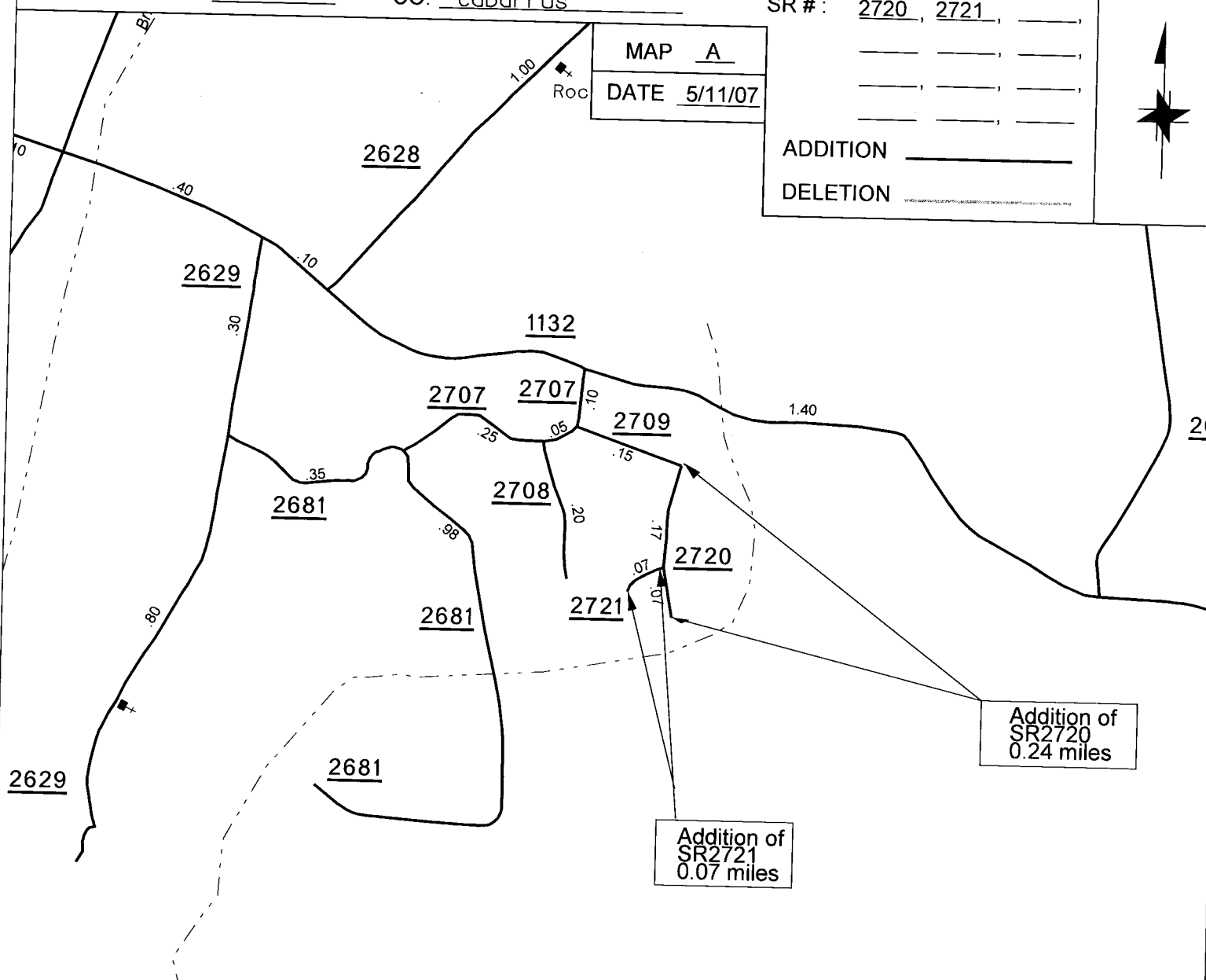
SR #: 2720, 2721, _____

MAP A

DATE 5/11/07

ADDITION _____

DELETION _____



2629

2629

2628

1132

2707

2707

2709

2681

2708

2720

2681

2721

2681

Addition of
SR2720
0.24 miles

Addition of
SR2721
0.07 miles

SOURCE: Plat

SHEET: 4 OF 4

NAME: PS

SCALE: 4:1