



STATE OF NORTH CAROLINA
DEPARTMENT OF TRANSPORTATION

MICHAEL F. EASLEY
GOVERNOR

January 07, 2008

LYNDO TIPPETT
SECRETARY

MEMORANDUM TO: Mr. H. Allen Pope, PE
Division Engineer
Division 3

FROM: Information, Mapping, and Graphics Unit

SUBJECT: 2007 District 3 Road System Changes

The Road Inventory Information Section has been authorized to make the following changes to the state road system as indicated below. We request that you make similar changes to the related maps and files in your Division and District offices, and install appropriate road number signs if necessary. We have updated our records and county maps accordingly. If our system changes do not conform to the actual conditions in the field, please return this memorandum with recommendations.

TIP Number	County	Approval Date
U-0092A	NEW HANOVER	8/5/2006

Inquires about changes should be referred to one of the following: Ron Tucker at (919) 212-6080 or Tom Schroder at (919) 212-6090. If you have further questions, please contact Hardee Cox, Road Inventory Information Section Manager at (919) 212-6060. Thank you for your assistance.

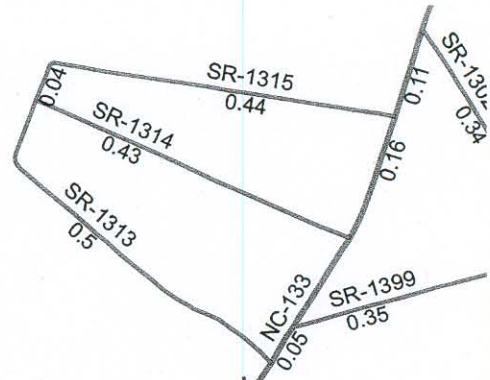
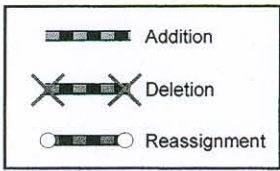
HRC
enclosures ()

cc: BSIP
Bridge Maintenance
Division Right of Way
GIS
Pavement Management
Permit Unit
State Road Maintenance
Traffic Engineering
Traffic Surveys

2007 ROAD SYSTEM CHANGES

TIP NUMBER	COUNTY	APPROVAL DATE	NEW NUMBER	EXISTING NUMBER	STREET NAME	LENGTH (miles)	TYPE OF CHANGE	REMARKS (See Attached Map)
U-0092A	NEW HANOVER	8/5/2006	US 74	NC 133		0.44	NUMBER REASSIGNMENT VIA PROJECT	MAP A, SEGMENT 1
U-0092A	NEW HANOVER	8/5/2006		US 74		0.42	SYSTEM ADDITION VIA PROJECT	MAP A, SEGMENT 2
U-0092A	NEW HANOVER	8/5/2006	SR 2815	NC 133		0.05	SYSTEM REASSIGNMENT VIA PROJECT	MAP B, SEGMENT 3
U-0092A	NEW HANOVER	8/5/2006	SR 2814	NC 133		0.06	SYSTEM REASSIGNMENT VIA PROJECT	MAP B, SEGMENT 4
U-0092A	NEW HANOVER	8/5/2006	SR 2812	NC 133		1.27	SYSTEM REASSIGNMENT VIA PROJECT	MAP A, SEGMENT 5
U-0092A	NEW HANOVER	8/5/2006		US 74		0.95	SYSTEM ADDITION VIA PROJECT	MAP A, SEGMENT 6
U-0092A	NEW HANOVER	8/5/2006	SR 2812			0.06	SYSTEM ADDITION VIA PROJECT	MAP C, SEGMENT 7
U-0092A	NEW HANOVER	8/5/2006		US 74		0.25	SYSTEM ADDITION VIA PROJECT	MAP A, SEGMENT 8
U-0092A	NEW HANOVER	8/5/2006		SR 2024	KRASS LANE	0.06	SYSTEM DELETION VIA PROJECT	MAP A, SEGMENT 9
U-0092A	NEW HANOVER	8/5/2006		SR 1310	DIVISION DRIVE	0.09	SYSTEM DELETION VIA PROJECT	MAP C, SEGMENT 10
U-0092A	NEW HANOVER	8/5/2006	SR 2813	SR 1310	DIVISION DRIVE	0.13	NUMBER REASSIGNMENT VIA PROJECT	MAP C, SEGMENT 11
U-0092A	NEW HANOVER	8/5/2006		SR 1627	NORTH 3RD STREET	0.26	SYSTEM ADDITION VIA PROJECT	MAP B, SEGMENT 12
U-0092A	NEW HANOVER	8/5/2006		NC 133		0.16	SYSTEM DELETION VIA PROJECT	MAP B, SEGMENT 13

TIP NUMBER	COUNTY	APPROVAL DATE	NEW NUMBER	EXISTING NUMBER	STREET NAME	LENGTH (miles)	TYPE OF CHANGE	REMARKS (See Attached Map)
U-0092A	NEW HANOVER	8/5/2006		NC 133		0.11	SYSTEM DELETION VIA PROJECT	MAP C, SEGMENT 14
U-0092A	NEW HANOVER	8/5/2006		SR 1310	DIVISION DRIVE	0.20	SYSTEM ADDITION VIA PROJECT	MAP C, SEGMENT 15
U-0092A	NEW HANOVER	8/5/2006		NC 133		0.41	SYSTEM ADDITION VIA PROJECT	MAP C, SEGMENT 16



System Change 1.27
NC 133 to SR 2812
Segment 5

Number Reassignment .44
NC 133 to US 74
Segment 1

Addition 1.37
US 74
Segment 2 & 6

Wilmington

0.71

SR-2134 0.4

SR-2133 0.17

0.26

0.17

0.11

US-4211 0.24

SR-2189 0.18

0.58

0.32

0.33

0.07

0.08

SR-1993 0.15

SR-1994 0.15

SR-1995 0.14

SR-1997

0.53

SR-1301 0.22

SR-1371 0.31

0.7

0.54

US-17 0.91

0.91

0.7

0.54

0.54

0.54

0.54

0.54

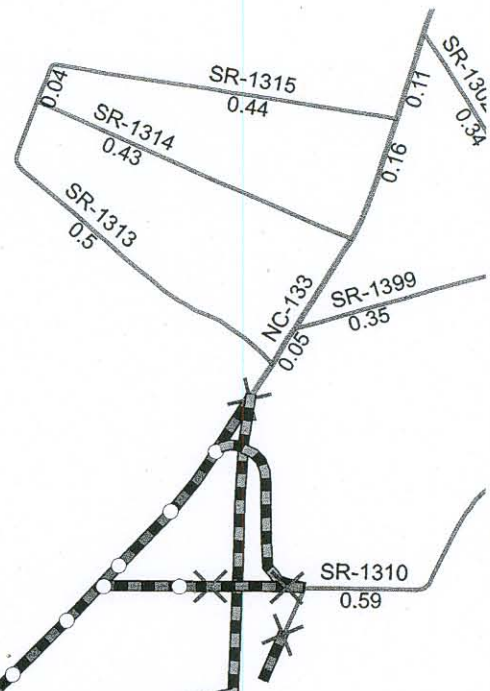
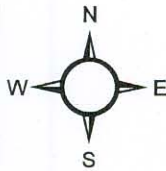
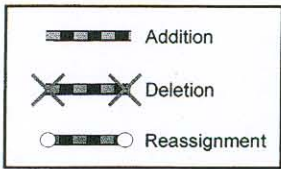
Project: 8.2250110

Tip:U-0092A

New Hanover County

Map A

NTS



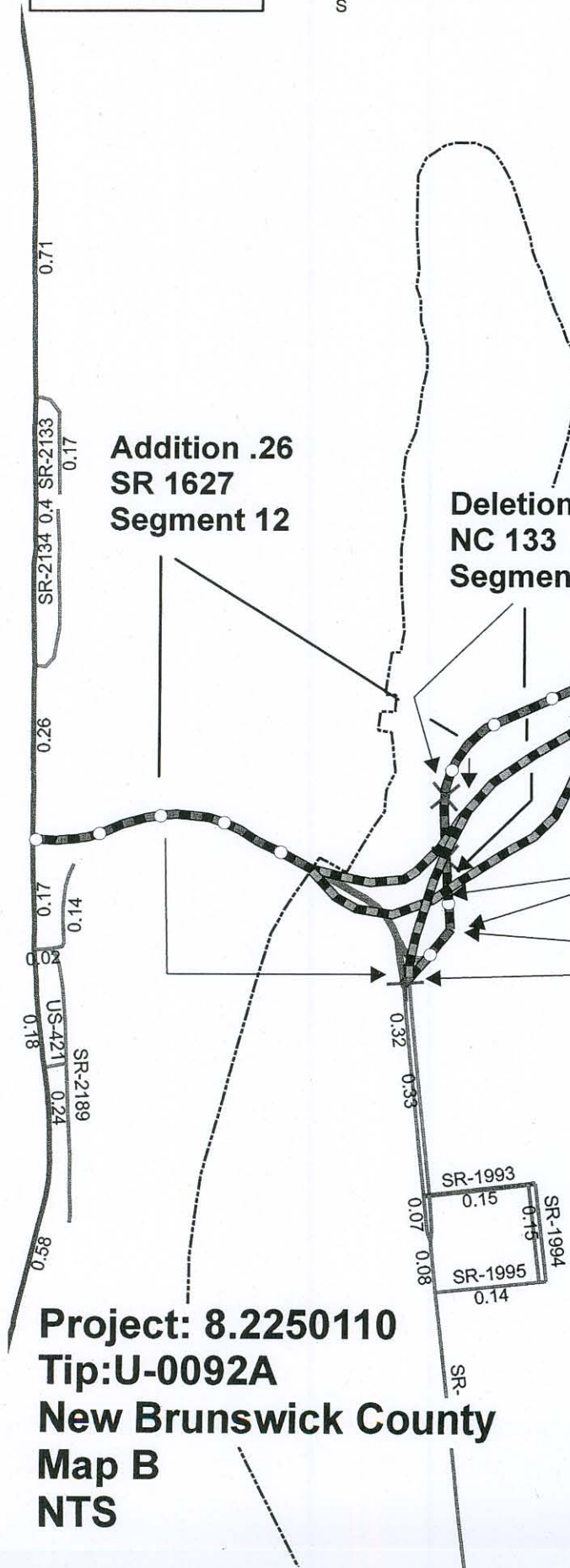
Addition .26
SR 1627
Segment 12

Deletion .16
NC 133
Segment 13

System Change .06
NC 133 to SR 2814
Segment 4

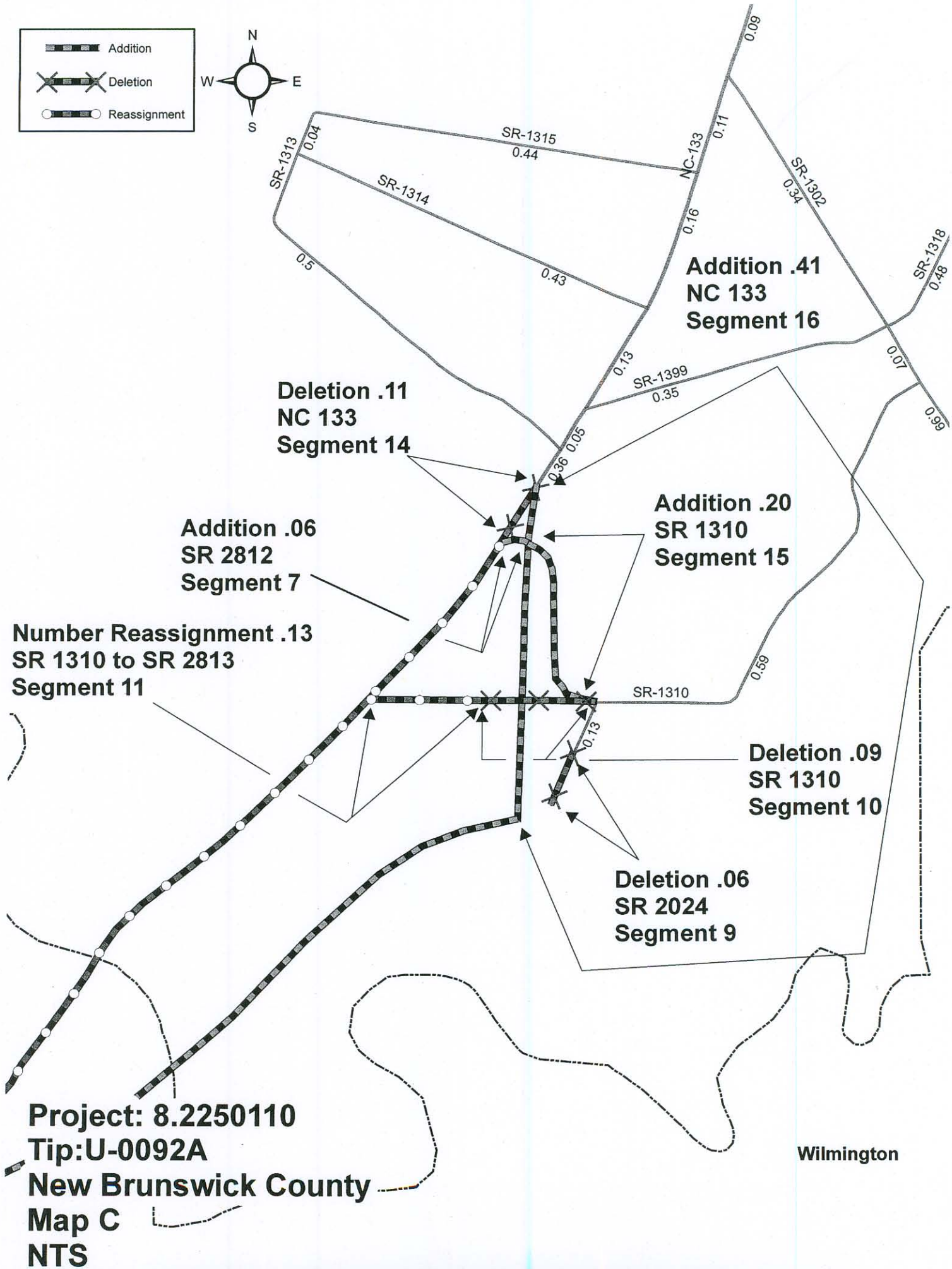
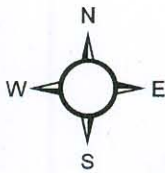
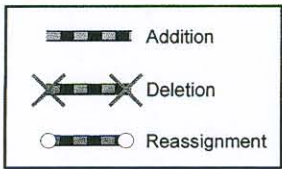
System Change .05
Nc 133 to SR 2815
Segment 3

Wilmington



Project: 8.2250110
Tip:U-0092A
New Brunswick County
Map B
NTS





Wilmington

Project: 8.2250110
Tip:U-0092A
New Brunswick County
Map C
NTS