



STATE OF NORTH CAROLINA
DEPARTMENT OF TRANSPORTATION

Beverly Eaves Perdue
GOVERNOR

Friday, October 09, 2009

EUGENE A. CONTI, JR.
SECRETARY

MEMORANDUM TO: Mr. H. Allen Pope, PE
Division Engineer
Division 3

FROM: Information, and Mapping Unit

SUBJECT: 2007 District 3 Road System Changes **-REVISED**

The Road Inventory Information Section has been authorized to make the following changes to the state road system as indicated below. We request that you make similar changes to the related maps and files in your Division and District offices, and install appropriate road number signs if necessary. We have updated our records and county maps accordingly. If our system changes do not conform to the actual conditions in the field, please return this memorandum with recommendations.

TIP Number	County	Approval Date
R-2633 CA	NEW HANOVER	6/30/2006

Inquires about changes should be referred to one of the following: For Primary Roads call Paulette Smith at (919)-212-6100, and for Secondary Roads call Ron Tucker at (919)-212-6085. Thank you for your assistance.

JLC
enclosures ()

- cc: BSIP
Bridge Maintenance
Division Right of Way
GIS
Pavement Management
Permit Unit
State Road Maintenance
Traffic Engineering
Traffic Surveys

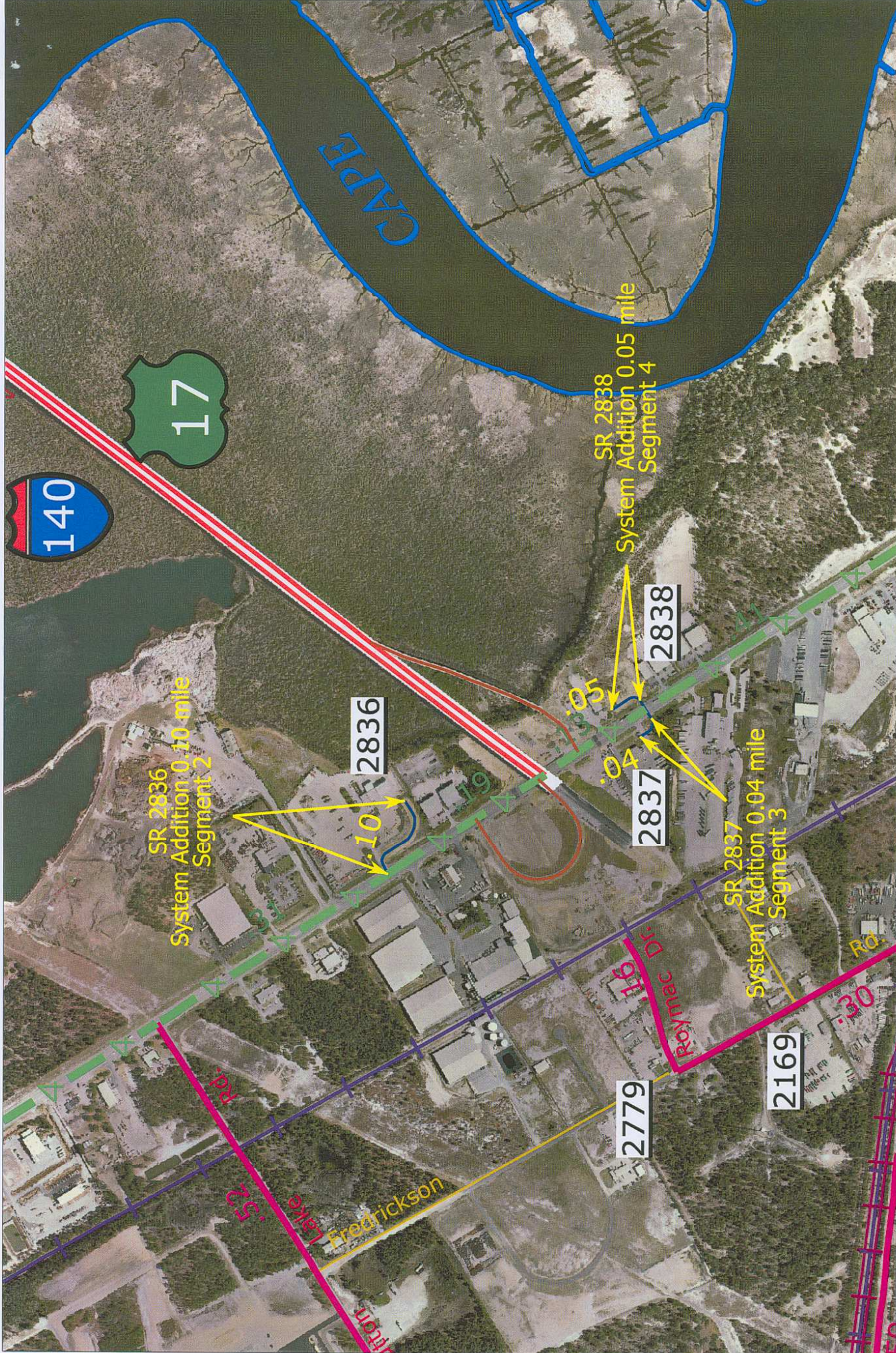
MAILING ADDRESS:
NC DEPARTMENT OF TRANSPORTATION
INFORMATION, MAPPING AND GRAPHICS UNIT
1587 MAIL SERVICE CENTER
RALEIGH NC 27699-1587



LOCATION:
3401 CARL SANDBURG CT.
RALEIGH, NC 27610

2007 ROAD SYSTEM CHANGES

TIP NUMBER	COUNTY	APPROVAL DATE	NEW NUMBER	EXISTING NUMBER	STREET NAME	LENGT H	TYPE OF CHANGE	REMARKS (See Attached Map)
R-2633 CA	NEW HANOVER	6/30/2006	US 17	SR 1011		4.05	SYSTEM REASSIGNMENT VIA PROJECT	MAP A, SEGMENT 1
R-2633 CA	NEW HANOVER	6/30/2006	SR 2836		SERVICE ROAD 1	0.10	SYSTEM ADDITION VIA PROJECT	MAP A, SEGMENT 2
R-2633 CA	NEW HANOVER	6/30/2006	SR 2837		SERVICE ROAD 2	0.04	SYSTEM ADDITION VIA PROJECT	MAP A, SEGMENT 3
R-2633 CA	NEW HANOVER	6/30/2006	SR 2838		SERVICE ROAD 3	0.05	SYSTEM ADDITION VIA PROJECT	MAP A, SEGMENT 4
R-2633 CA	NEW HANOVER	6/30/2006		SR 1331	ROCKHILL ROAD	0.10	SYSTEM ADDITION VIA PROJECT	MAP A, SEGMENT 5
R-2633 CA	NEW HANOVER	6/30/2006	SR 2839			0.39	SYSTEM ADDITION VIA PROJECT	MAP A, SEGMENT 6
R-2633 CA	NEW HANOVER	6/30/2006		SR 1332	CHAIR ROAD	0.04	SYSTEM DELETION VIA PROJECT	MAP A, SEGMENT 9
R-2633 CA	NEW HANOVER	6/30/2006		SR 1332	CHAIR ROAD	0.67	SYSTEM ADDITION VIA PROJECT	MAP A, SEGMENT 10
R-2633 CA	NEW HANOVER	6/30/2006		SR 2659	EMERSON DRIVE	0.06	SYSTEM DELETION VIA PROJECT	MAP A, SEGMENT 11





STATE OF NORTH CAROLINA
DEPARTMENT OF TRANSPORTATION

Beverly Eaves Perdue
GOVERNOR

Thursday, October 08, 2009

EUGENE A. CONTI, JR.
SECRETARY

MEMORANDUM TO: Mr. H. Allen Pope, PE
Division Engineer
Division 3

FROM: Information, and Mapping Unit

SUBJECT: 2007 District 3 Road System Changes

The Road Inventory Information Section has been authorized to make the following changes to the state road system as indicated below. We request that you make similar changes to the related maps and files in your Division and District offices, and install appropriate road number signs if necessary. We have updated our records and county maps accordingly. If our system changes do not conform to the actual conditions in the field, please return this memorandum with recommendations.

TIP Number	County	Approval Date
R-2633 CA	NEW HANOVER	11/11/1999

Inquires about changes should be referred to one of the following: For Primary Roads call Paulette Smith at (919)-212-6100, and for Secondary Roads call Ron Tucker at (919)-212-6085. Thank you for your assistance.

JLC
enclosures ()

- cc: BSIP
Bridge Maintenance
Division Right of Way
GIS
Pavement Management
Permit Unit
State Road Maintenance
Traffic Engineering
Traffic Surveys