



STATE OF NORTH CAROLINA  
DEPARTMENT OF TRANSPORTATION

MICHAEL F. EASLEY  
GOVERNOR

Wednesday, June 27, 2007

LYNDO TIPPETT  
SECRETARY

**MEMORANDUM TO:** Mr. Michael L. Holder, PE  
Division Engineer  
Division 12

**FROM:** L.C. Smith  
GIS Director

**SUBJECT:** 2006 District 3 Road System Changes

The Data Compilation Section has been authorized to make the following changes to the state road system as indicated below. We request that you make similar changes to the related maps and files in your Division and District offices, and install appropriate road number signs if necessary. We have updated our records and county maps accordingly. If our system changes do not conform to the actual conditions in the field, please return this memorandum with recommendations.

Contract Number	County	Approval Date
8.2790907	CATAWBA	5/15/2006

Inquires about changes should be referred to one of the following: Ron Tucker (Div 3,6,7,8) at (919) 212-6080, Ron Nealy (Div 5,9,11,13,14) at (919) 212-5980, or Lori Mann (Div 1,2,4,10,12) at (919) 212-6075. If you have further questions, please contact Hardee Cox, Data Compilation Section Manger at (919) 212-6060. Thank you for your assistance.

LCS/hrc  
enclosures ( )

cc: BSIP  
Bridge Maintenance  
Division Right of Way  
Pavement Management  
Permit Unit  
State Road Maintenance  
Traffic Engineering  
Traffic Surveys

**MAILING ADDRESS:**  
NC DEPARTMENT OF TRANSPORTATION  
GEOGRAPHIC INFORMATION SYSTEMS  
1587 MAIL SERVICE CENTER  
RALEIGH NC 27699-1587



**DELIVERY ADDRESS:**  
3401 CARL SANDBURG CT.  
RALEIGH, NC 27610  
PHONE: (919) 212-6000  
FAX: (919) 212-5999

# 2006 ROAD SYSTEM CHANGES

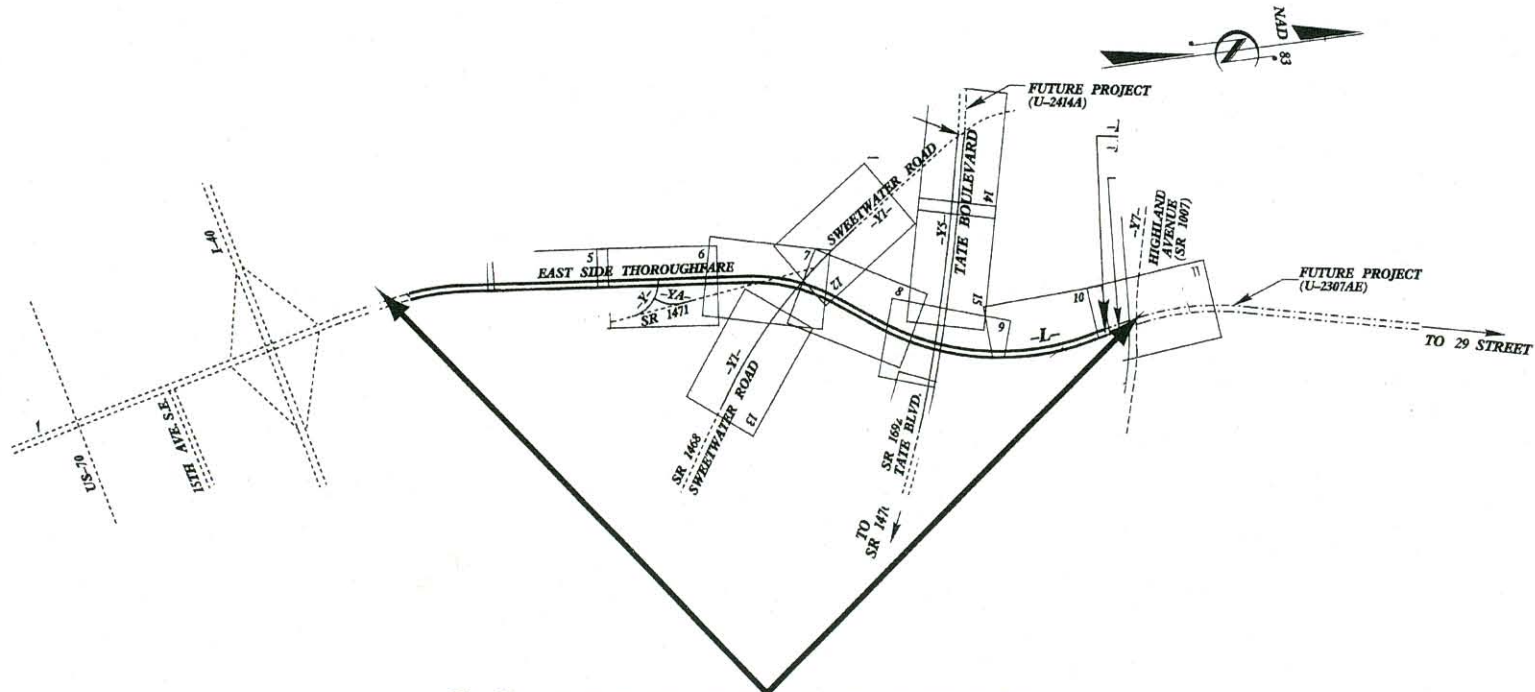
PROJECT NUMBER	COUNTY	APPROVAL DATE	NEW NUMBER	EXISTING NUMBER	STREET NAME	LENGTH (miles)	TYPE OF CHANGE	REMARKS (See Attached Map)
8.2790907	CATAWBA	5/15/2006	SR 3031	SR 1471		0.16	NUMBER REASSIGNMENT VIA PROJECT	MAP , SEGMENT
8.2790907	CATAWBA	5/15/2006	SR 3031			0.07	SYSTEM ADDITION VIA PROJECT	MAP , SEGMENT
8.2790907	CATAWBA	5/15/2006		SR 1471		0.19	SYSTEM DELETION VIA PROJECT	MAP , SEGMENT
8.2790907	CATAWBA	5/15/2006		SR 1471		0.11	SYSTEM ADDITION VIA PROJECT	MAP , SEGMENT
8.2790907	CATAWBA	5/15/2006		SR 1005		2.25	SYSTEM ADDITION VIA PROJECT	MAP , SEGMENT

U-2307AD

PROJECT: 8.2790907

# CATAWBA COUNTY

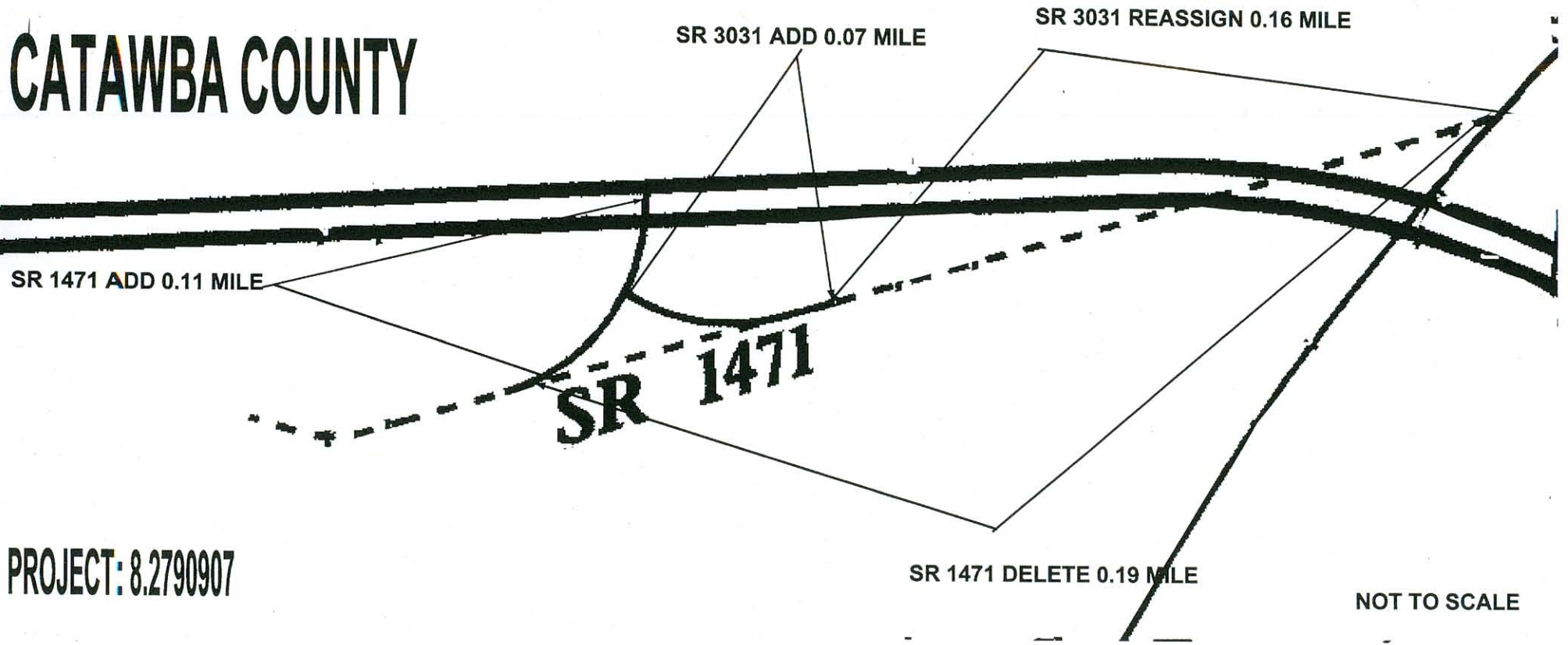
LOCATION: HICKORY - EAST SIDE THOROUGHFARE FROM  
NORTH OF INTERCHANGE AT I-40 TO  
NORTH OF SR 1692(TATE BOULEVARD)



SC 1005 ADD 2.25 MILES

NOT TO SCALE

# CATAWBA COUNTY



PROJECT: 8.2790907