



STATE OF NORTH CAROLINA
DEPARTMENT OF TRANSPORTATION

MICHAEL F. EASLEY
GOVERNOR

June 28, 2007

LYNDO TIPPETT
SECRETARY

MEMORANDUM TO: Mr. Mike Mills, PE
Division Engineer
Division 7

FROM: L.C. Smith
GIS Director

SUBJECT: 2006 District 1 Road Sytem Changes

The Data Compilation Section has been authorized to make the following changes to the state road system as indicated below. We request that you make similar changes to the related maps and files in your Division and District offices, and install appropriate road number signs if necessary. We have updated our records and county maps accordingly. If our system changes do not conform to the actual conditions in the field, please return this memorandum with recommendations.

Municipality	County	Approval Date
BURLINGTON	ALAMANCE	5/4/2006

Inquires about changes should be referred to one of the following: Ron Tucker (Div 3,6,7,8) at (919) 212-6080, Ron Nealy (Div 5,9,11,13,14) at (919) 212-5980, or Lori Mann (Div 1,2,4,10,12) at (919) 212-6075. If you have further questions, please contact Hardee Cox, Data Compilation Section Manger at (919) 212-6060. Thank you for your assistance.

LCS/hrc
enclosures ()

cc: BSIP
Bridge Maintenance
Division Right of Way
Pavement Management
Permit Unit
State Road Maintenance
Traffic Engineering
Traffic Surveys

MAILING ADDRESS:
NC DEPARTMENT OF TRANSPORTATION
GEOGRAPHIC INFORMATION SYSTEMS
1587 MAIL SERVICE CENTER
RALEIGH NC 27699-1587



DELIVERY ADDRESS:
3401 CARL SANDBURG CT.
RALEIGH, NC 27610
PHONE: (919) 212-6000
FAX: (919) 212-5999

2006 ROAD SYSTEM CHANGES

MUNICIPALITY	COUNTY	APPROVAL DATE	NEW NUMBER	EXISTING NUMBER	STREET NAME	LENGTH (miles)	TYPE OF CHANGE	REMARKS (See Attached Map)
BURLINGTON	ALAMANCE	5/4/2006		SR 1363	SOUTH MEBANE STREET	0.18	SYSTEM DELETION VIA MUNICIPAL AGREEMENT	MAP A, SEGMENT 1
BURLINGTON	ALAMANCE	5/4/2006		SR 1199	MOREHEAD STREET	0.18	SYSTEM DELETION VIA MUNICIPAL AGREEMENT	MAP A, SEGMENT 1
BURLINGTON	ALAMANCE	5/4/2006		SR 1346	SOUTH SCHOOL STREET	0.30	SYSTEM DELETION VIA MUNICIPAL AGREEMENT	MAP A, SEGMENT 1
BURLINGTON	ALAMANCE	5/4/2006		SR 1347	AARON STREET/RADIANCE DR	0.40	SYSTEM DELETION VIA MUNICIPAL AGREEMENT	MAP A, SEGMENT 1
BURLINGTON	ALAMANCE	5/4/2006		SR 1348	PENNSYLVANIA AVE	0.10	SYSTEM DELETION VIA MUNICIPAL AGREEMENT	MAP A, SEGMENT 1
BURLINGTON	ALAMANCE	5/4/2006		SR 1349	AMICK ST/LAKEVIEW AVE/NY AVE	0.79	SYSTEM DELETION VIA MUNICIPAL AGREEMENT	MAP A, SEGMENT 1
BURLINGTON	ALAMANCE	5/4/2006		SR 1350	SUNSET HILLS AVE	0.10	SYSTEM DELETION VIA MUNICIPAL AGREEMENT	MAP A, SEGMENT 1
BURLINGTON	ALAMANCE	5/4/2006		SR 1163	CROUSE LANE	0.30	SYSTEM DELETION VIA MUNICIPAL AGREEMENT	MAP A, SEGMENT 1
BURLINGTON	ALAMANCE	5/4/2006		SR 1352	DAVIS STREET	0.07	SYSTEM DELETION VIA MUNICIPAL AGREEMENT	MAP A, SEGMENT 1
BURLINGTON	ALAMANCE	5/4/2006		SR 1531	ELMIRA STREET	0.17	SYSTEM DELETION VIA MUNICIPAL AGREEMENT	MAP A, SEGMENT 1
BURLINGTON	ALAMANCE	5/4/2006		SR 1390	FAUCETTE AVE	0.10	SYSTEM DELETION VIA MUNICIPAL AGREEMENT	MAP A, SEGMENT 1
BURLINGTON	ALAMANCE	5/4/2006		SR 1405	HERBIN HEIGHTS AVE	0.04	SYSTEM DELETION VIA MUNICIPAL AGREEMENT	MAP A, SEGMENT 1
BURLINGTON	ALAMANCE	5/4/2006		SR 1412	RIDGECREST AVE	0.20	SYSTEM DELETION VIA MUNICIPAL AGREEMENT	MAP A, SEGMENT 1

MUNICIPALITY	COUNTY	APPROVAL DATE	NEW NUMBER	EXISTING NUMBER	STREET NAME	LENGTH (miles)	TYPE OF CHANGE	REMARKS (See Attached Map)
BURLINGTON	ALAMANCE	5/4/2006		SR 1413	HAWTHORNE LANE	0.10	SYSTEM DELETION VIA MUNICIPAL AGREEMENT	MAP A, SEGMENT 1
BURLINGTON	ALAMANCE	5/4/2006		SR 1448	FAUCETTE AVE	0.06	SYSTEM DELETION VIA MUNICIPAL AGREEMENT	MAP A, SEGMENT 1
BURLINGTON	ALAMANCE	5/4/2006		SR 1452	O'NEAL STREET (EXT)	0.09	SYSTEM ADDITION VIA MUNICIPAL AGREEMENT	MAP A, SEGMENT 1
BURLINGTON	ALAMANCE	5/4/2006		SR 1452	ROCKWOOD AVE (EXT)	0.14	SYSTEM ADDITION VIA MUNICIPAL AGREEMENT	MAP A, SEGMENT 1
BURLINGTON	ALAMANCE	5/4/2006		SR 1351	SEDFIELD DR	0.10	SYSTEM DELETION VIA MUNICIPAL AGREEMENT	MAP A, SEGMENT 1

PETITION #: MUN

CO: Alamance

SR #: 1346, 1347, 1348,

1349, 1350, 1351,

1390, 1412, 1413,

1405, 1448, _____

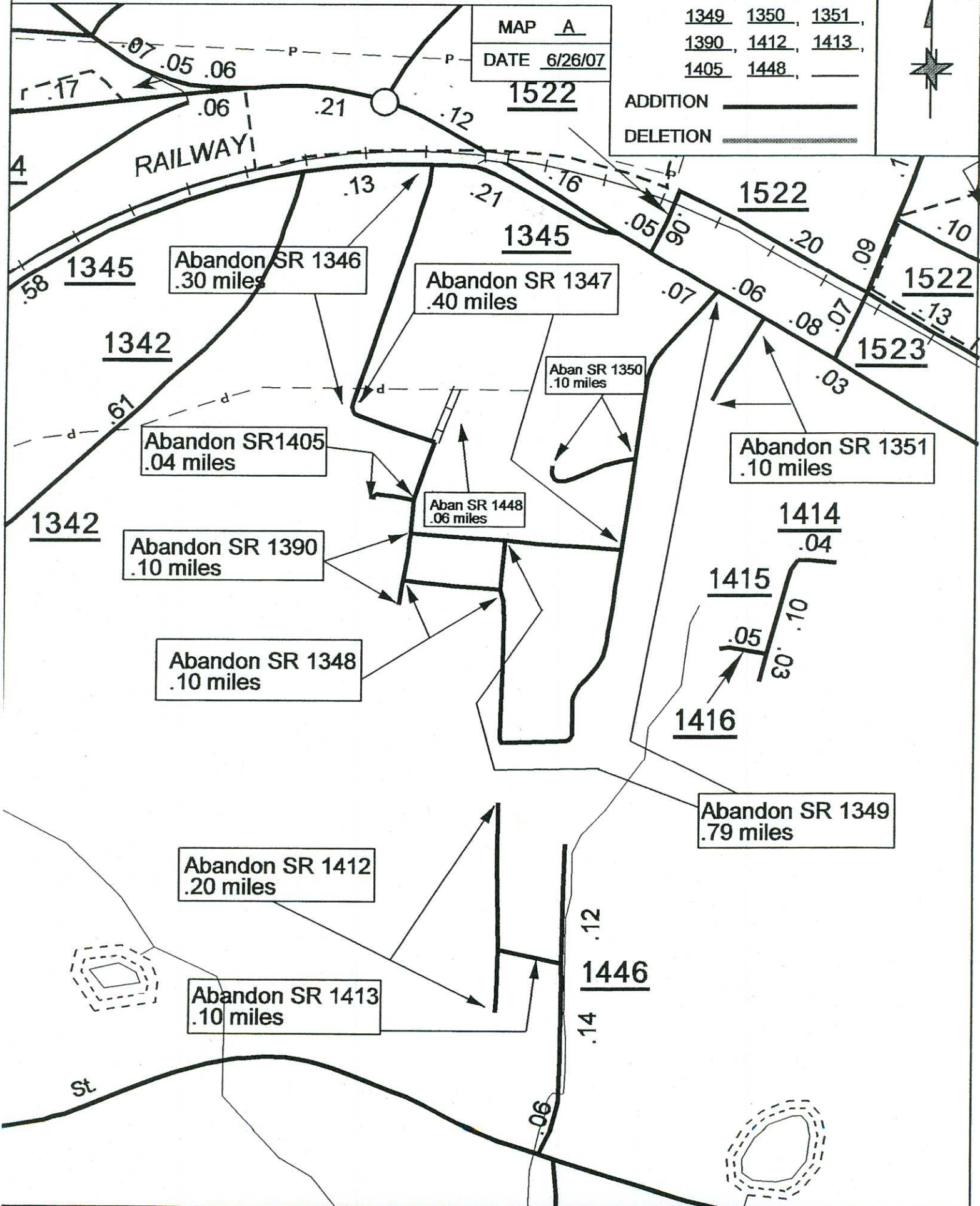
MAP A

DATE 6/26/07

1522

ADDITION _____

DELETION _____



SOURCE: Plat

SHEET: 2 OF 3

NAME: LM

SCALE: NONE

PETITION #: MUN

CO: Alamance

SR #: 1531, 1363, 1352,
1199 _____, _____,
_____, _____, _____,
_____, _____, _____,

MAP B

DATE 6/27/07

ADDITION _____

DELETION _____



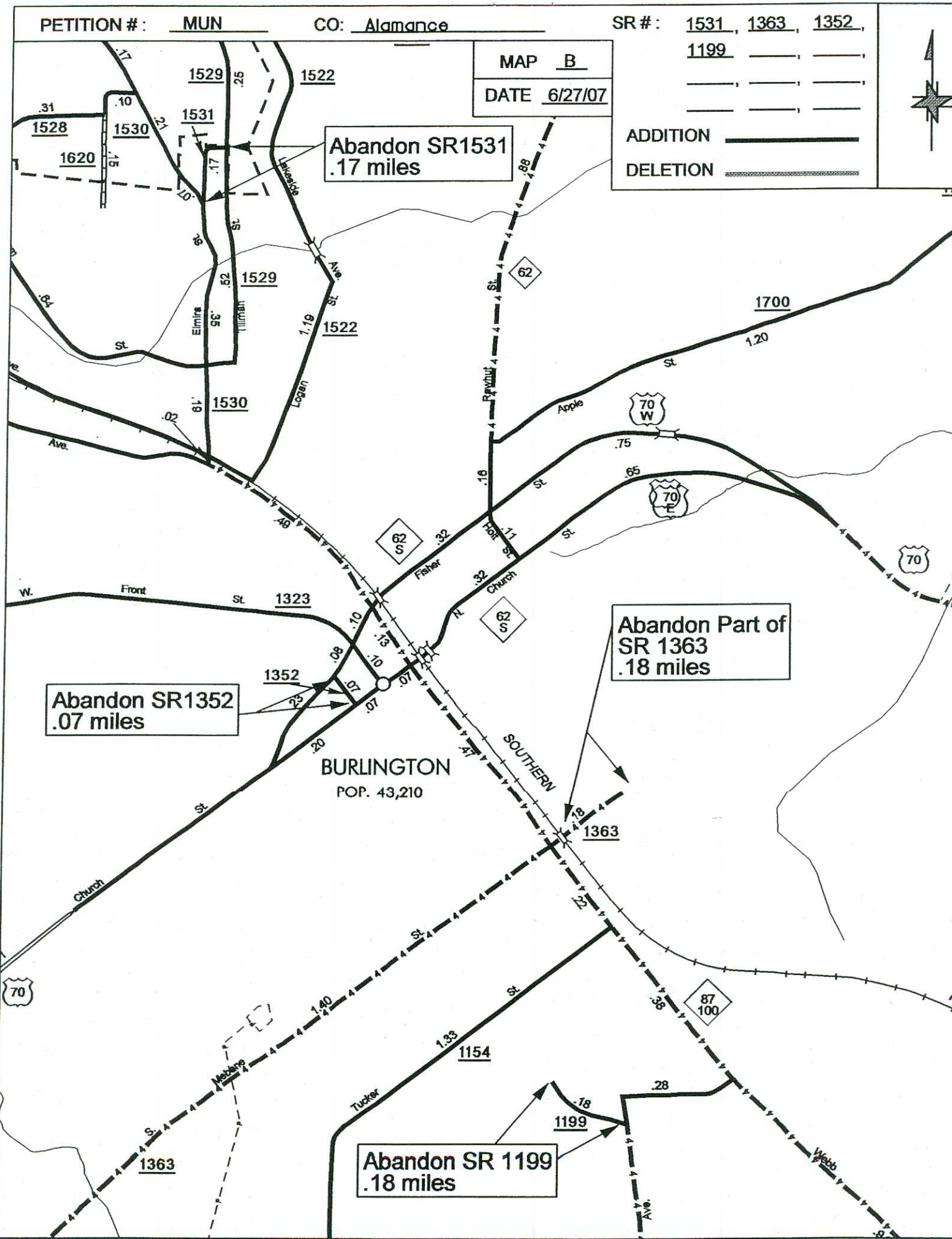
Abandon SR1531
.17 miles

Abandon Part of
SR 1363
.18 miles

Abandon SR1352
.07 miles

Abandon SR 1199
.18 miles

BURLINGTON
POP. 43,210



SOURCE: Plat

SHEET: 2 OF 3

NAME: LM

SCALE: 4:1

PETITION #: MUN

CO: Alamance

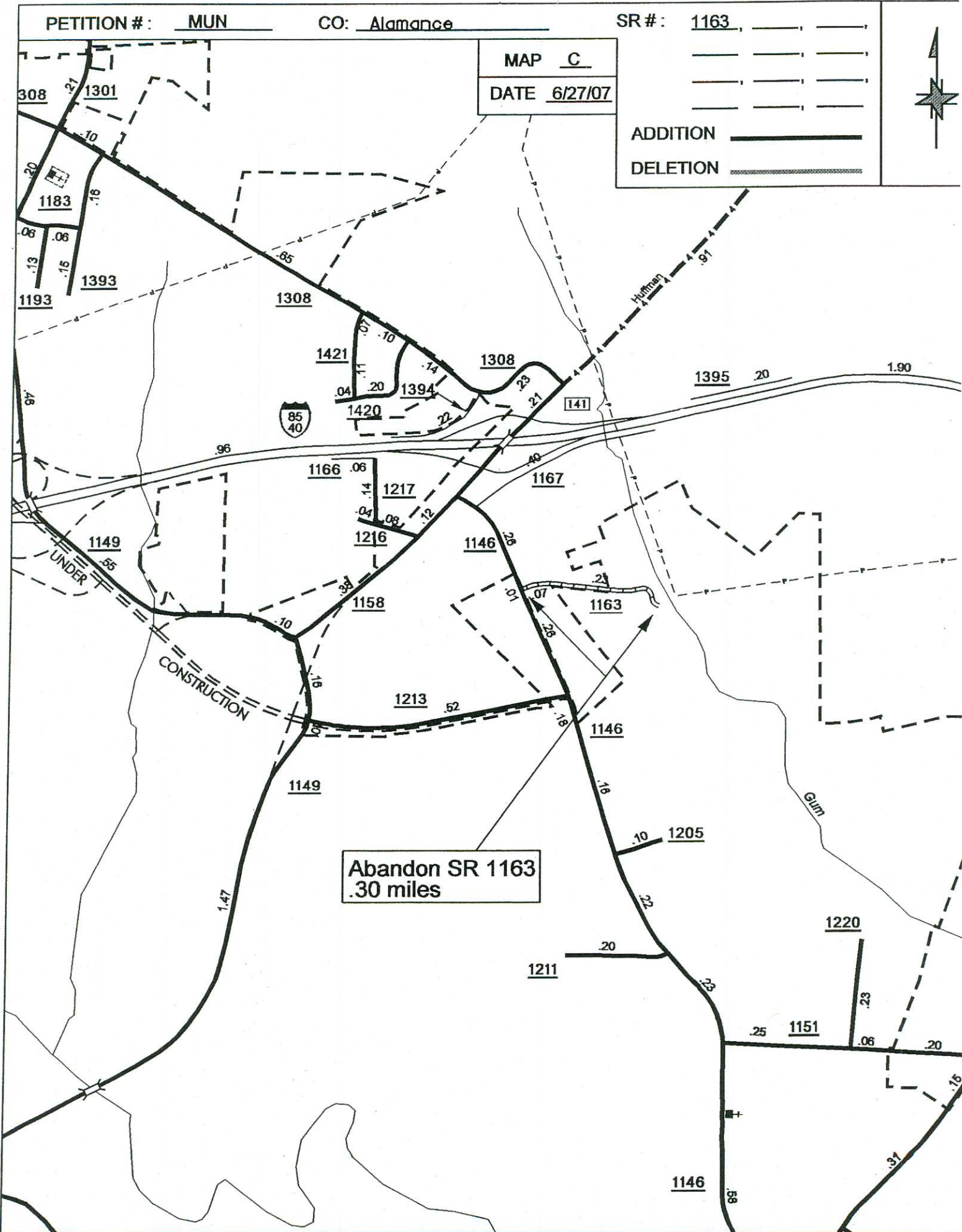
SR #: 1163

MAP C

DATE 6/27/07

ADDITION 

DELETION 



Abandon SR 1163
.30 miles