



STATE OF NORTH CAROLINA  
DEPARTMENT OF TRANSPORTATION

MICHAEL F. EASLEY  
GOVERNOR

April 18, 2006

LYNDO TIPPETT  
SECRETARY

**MEMORANDUM TO:** Mr. Jay Swain, PE  
Division Engineer  
Division 13

**FROM:** L.C. Smith  
GIS Director

**SUBJECT:** 2006 District 1 Road System Changes

The Road Inventory Section has been authorized to make the following changes to the state road system as indicated below. We request that you make similar changes to the related maps and files in your Division and District offices, and install appropriate road number signs if necessary. We have updated our records and county maps accordingly. If our system changes do not conform to the actual conditions in the field, please return this memorandum with recommendations.

| Petition Number | County | Approval Date |
|-----------------|--------|---------------|
| 47856           | BURKE  | 4/6/2006      |

Inquires about secondary road petition changes should be referred to Ron Tucker, Secondary Roads Group Supervisor at (919) 212-6080. Inquires about TIP Project changes should be referred to Tom Schroeder, Primary Highway Group Supervisor at (919) 212-6074. If you have further questions, please contact Hardee Cox, Road Inventory Manager at (919) 212-6060. Thank you for your assistance.

LCS/hrc  
enclosures ( )

cc: BSIP  
Bridge Maintenance  
Pavement Management  
Permit Unit  
Right of Way  
Safety Management  
State Road Maintenance  
Traffic Engineering  
Traffic Surveys

# 2006 ROAD SYSTEM CHANGES

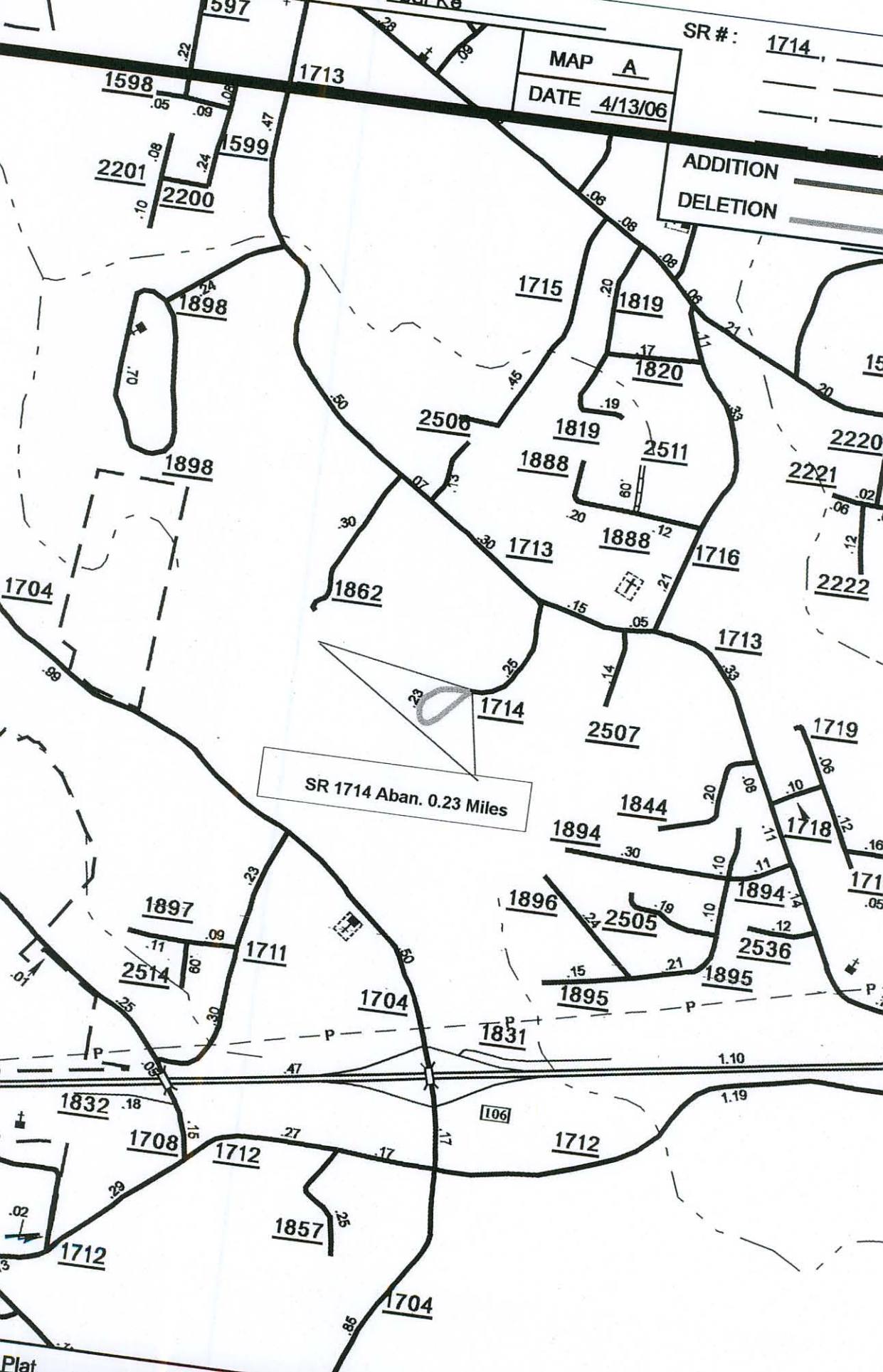
| PETITION NUMBER | COUNTY | APPROVAL DATE | NEW NUMBER | EXISTING NUMBER | STREET NAME        | LENGTH (miles) | TYPE OF CHANGE                     | REMARKS (See Attached Map) |
|-----------------|--------|---------------|------------|-----------------|--------------------|----------------|------------------------------------|----------------------------|
| 47856           | BURKE  | 4/6/2006      |            | SR 1714         | MOOSE LODGE STREET | 0.23           | SYSTEM DELETION<br>VIA<br>PETITION | MAP A, SEGMENT 1           |

SR #: 1714, \_\_\_\_\_  
\_\_\_\_\_  
\_\_\_\_\_

MAP A

DATE 4/13/06

ADDITION \_\_\_\_\_  
DELETION \_\_\_\_\_



SR 1714 Aban. 0.23 Miles

Plat