



STATE OF NORTH CAROLINA
DEPARTMENT OF TRANSPORTATION

MICHAEL F. EASLEY
GOVERNOR

May 23, 2007

LYNDO TIPPETT
SECRETARY

MEMORANDUM TO: Mr. Barry S. Moose, PE
Division Engineer
Division 10

FROM: L.C. Smith
GIS Director

SUBJECT: 2006 District 3 Road System Changes

The Data Compilation Section has been authorized to make the following changes to the state road system as indicated below. We request that you make similar changes to the related maps and files in your Division and District offices, and install appropriate road number signs if necessary. We have updated our records and county maps accordingly. If our system changes do not conform to the actual conditions in the field, please return this memorandum with recommendations.

Petition Number	County	Approval Date
47835	UNION	4/6/2006

Inquires about changes should be referred to one of the following: Ron Tucker (Div 3,6,7,8) at (919) 212-6080, Ron Nealy (Div 5,9,11,13,14) at (919) 212-5980, or Lori Mann (Div 1,2,4,10,12) at (919) 212-6075. If you have further questions, please contact Hardee Cox, Data Compilation Section Manger at (919) 212-6060. Thank you for your assistance.

LCS/hrc
enclosures ()

cc: BSIP
Bridge Maintenance
Division Right of Way
Pavement Management
Permit Unit
State Road Maintenance
Traffic Engineering
Traffic Surveys

MAILING ADDRESS:
NC DEPARTMENT OF TRANSPORTATION
GEOGRAPHIC INFORMATION SYSTEMS
1587 MAIL SERVICE CENTER
RALEIGH NC 27699-1587



DELIVERY ADDRESS:
3401 CARL SANDBURG CT.
RALEIGH, NC 27610
PHONE: (919) 212-6000
FAX: (919) 212-5999

2006 ROAD SYSTEM CHANGES

PETITION NUMBER	COUNTY	APPROVAL DATE	NEW NUMBER	EXISTING NUMBER	STREET NAME	LENGTH (miles)	TYPE OF CHANGE	REMARKS (See Attached Map)
47835	UNION	4/6/2006	SR 3343		BOULDER CT	0.10	SYSTEM ADDITION VIA PETITION	MAP A, SEGMENT
47835	UNION	4/6/2006	SR 3342		SILVER CREEK DRIVE	0.75	SYSTEM ADDITION VIA PETITION	MAP A, SEGMENT
47835	UNION	4/6/2006	SR 3341		DEEP HOLLOW CT	0.25	SYSTEM ADDITION VIA PETITION	MAP A, SEGMENT
47835	UNION	4/6/2006	SR 3340		GLEN VERDE CT	0.05	SYSTEM ADDITION VIA PETITION	MAP A, SEGMENT
47835	UNION	4/6/2006	SR 3339		SHADY BROOK COURT	0.04	SYSTEM ADDITION VIA PETITION	MAP A, SEGMENT
47835	UNION	4/6/2006	SR 3338		HIGH BROOK DRIVE	0.12	SYSTEM ADDITION VIA PETITION	MAP A, SEGMENT

PETITION #: 47835

CO: Union

SR #: 3338, 3339, 3340,

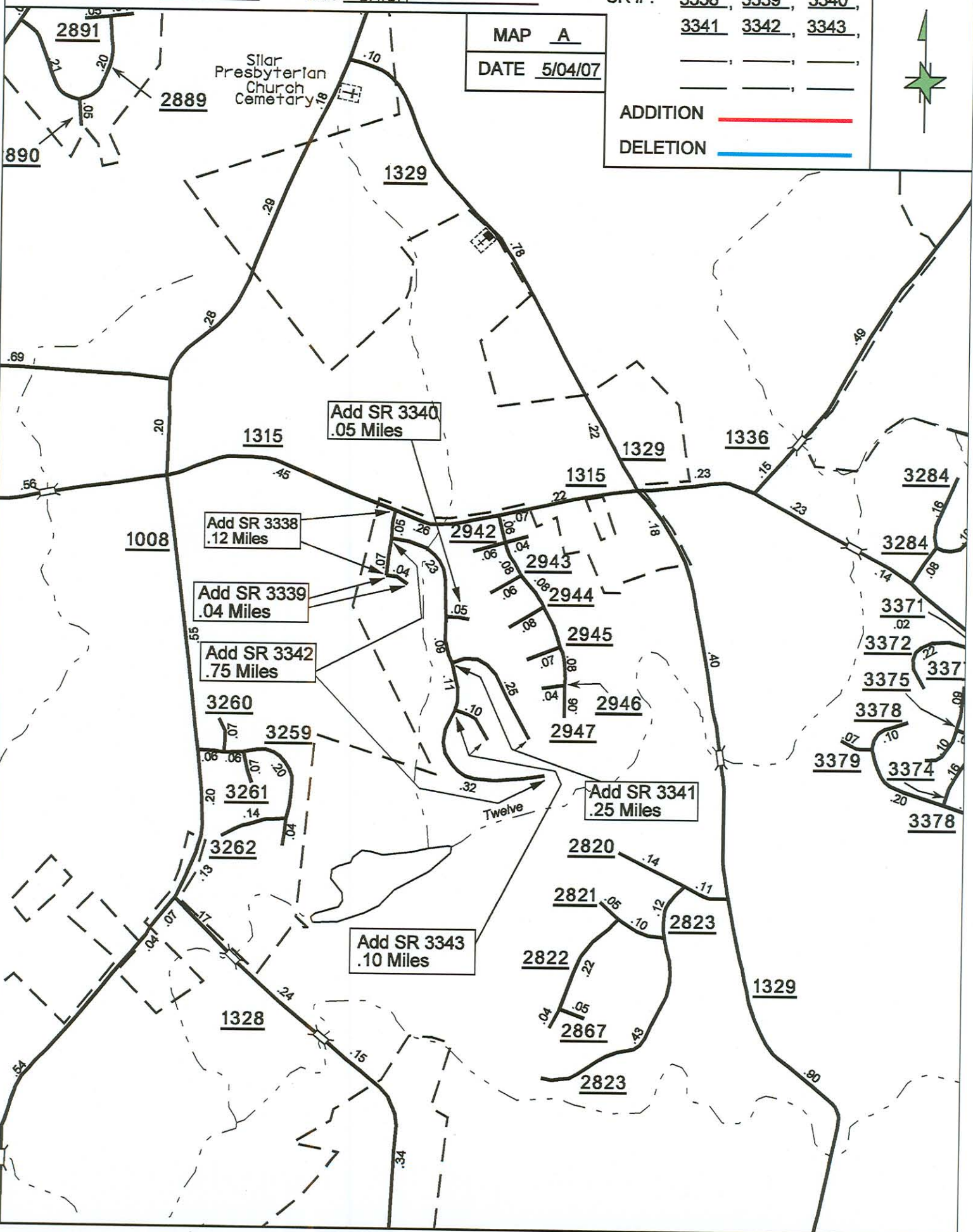
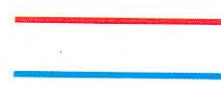
3341, 3342, 3343,

MAP A

DATE 5/04/07

ADDITION

DELETION



Add SR 3338
.12 Miles

Add SR 3339
.04 Miles

Add SR 3342
.75 Miles

Add SR 3340
.05 Miles

Add SR 3343
.10 Miles

Add SR 3341
.25 Miles