



STATE OF NORTH CAROLINA  
DEPARTMENT OF TRANSPORTATION

MICHAEL F. EASLEY  
GOVERNOR

June 14, 2006

LYNDO TIPPETT  
SECRETARY

**MEMORANDUM TO:** Mr. Barry S. Moose, PE  
Division Engineer  
Division 10

**FROM:** L.C. Smith  
GIS Director

**SUBJECT:** 2006 District 1 Road System Changes

The Road Inventory Section has been authorized to make the following changes to the state road system as indicated below. We request that you make similar changes to the related maps and files in your Division and District offices, and install appropriate road number signs if necessary. We have updated our records and county maps accordingly. If our system changes do not conform to the actual conditions in the field, please return this memorandum with recommendations.

Municipality	County	Approval Date
KANNAPOLIS	CABARRUS	4/6/2006

Inquires about secondary road petition changes should be referred to Ron Tucker, Secondary Roads Group Supervisor at (919) 212-6080. Inquires about TIP Project changes should be referred to Tom Schroeder, Primary Highway Group Supervisor at (919) 212-6074. If you have further questions, please contact Hardee Cox, Road Inventory Manager at (919) 212-6060. Thank you for your assistance.

LCS/hrc  
enclosures ( )

cc: BSIP  
Bridge Maintenance  
Division Right of Way  
Pavement Management  
Permit Unit  
State Road Maintenance  
Traffic Engineering  
Traffic Surveys

**MAILING ADDRESS:**  
NC DEPARTMENT OF TRANSPORTATION  
GEOGRAPHIC INFORMATION SYSTEMS  
1587 MAIL SERVICE CENTER  
RALEIGH NC 27699-1587



**DELIVERY ADDRESS:**  
3401 CARL SANDBURG CT.  
RALEIGH, NC 27610  
PHONE: (919) 212-6000  
FAX: (919) 212-5999

# 2006 ROAD SYSTEM CHANGES

MUNICIPALITY	COUNTY	APPROVAL DATE	NEW NUMBER	EXISTING NUMBER	STREET NAME	LENGTH (miles)	TYPE OF CHANGE	REMARKS (See Attached Map)
KANNAPOLIS	CABARRUS	4/6/2006		SR 1927		0.15	SYSTEM DELETION VIA MUNICIPAL AGREEMENT	MAP A, SEGMENT
KANNAPOLIS	CABARRUS	4/6/2006		SR 1920		0.17	SYSTEM DELETION VIA MUNICIPAL AGREEMENT	MAP A, SEGMENT
KANNAPOLIS	CABARRUS	4/6/2006		SR 1704		0.05	SYSTEM DELETION VIA MUNICIPAL AGREEMENT	MAP A, SEGMENT
KANNAPOLIS	CABARRUS	4/6/2006		SR 1689		0.08	SYSTEM DELETION VIA MUNICIPAL AGREEMENT	MAP A, SEGMENT
KANNAPOLIS	CABARRUS	4/6/2006		SR 1609		0.12	SYSTEM DELETION VIA MUNICIPAL AGREEMENT	MAP A, SEGMENT
KANNAPOLIS	CABARRUS	4/6/2006		SR 1008		1.23	SYSTEM DELETION VIA MUNICIPAL AGREEMENT	MAP A, SEGMENT
KANNAPOLIS	CABARRUS	4/6/2006		SR 2291		0.48	SYSTEM DELETION VIA MUNICIPAL AGREEMENT	MAP B, SEGMENT

PETITION #: \_\_\_\_\_

CO: Cabarrus

SR #: 1008, 1609, 1689,

1704, 1920, 1927,

MAP A  
DATE 4/27/06

ADDITION \_\_\_\_\_

DELETION  \_\_\_\_\_



SR 1609 ABD .12

SR 1927 ABD .15

SR 1689 ABD .08

SR 1920 ABD .17

SR 1704 ABD .05

SR 1008 ABD 1.23

Kannapolis  
Pop. 39,187

Kannapolis  
Community  
Baptist Church

Calvary Baptist  
Church

Four Gospel  
Baptist Church

Eastwood  
Baptist  
Church

First Wesleyan  
Church

pk School

PETITION #: \_\_\_\_\_

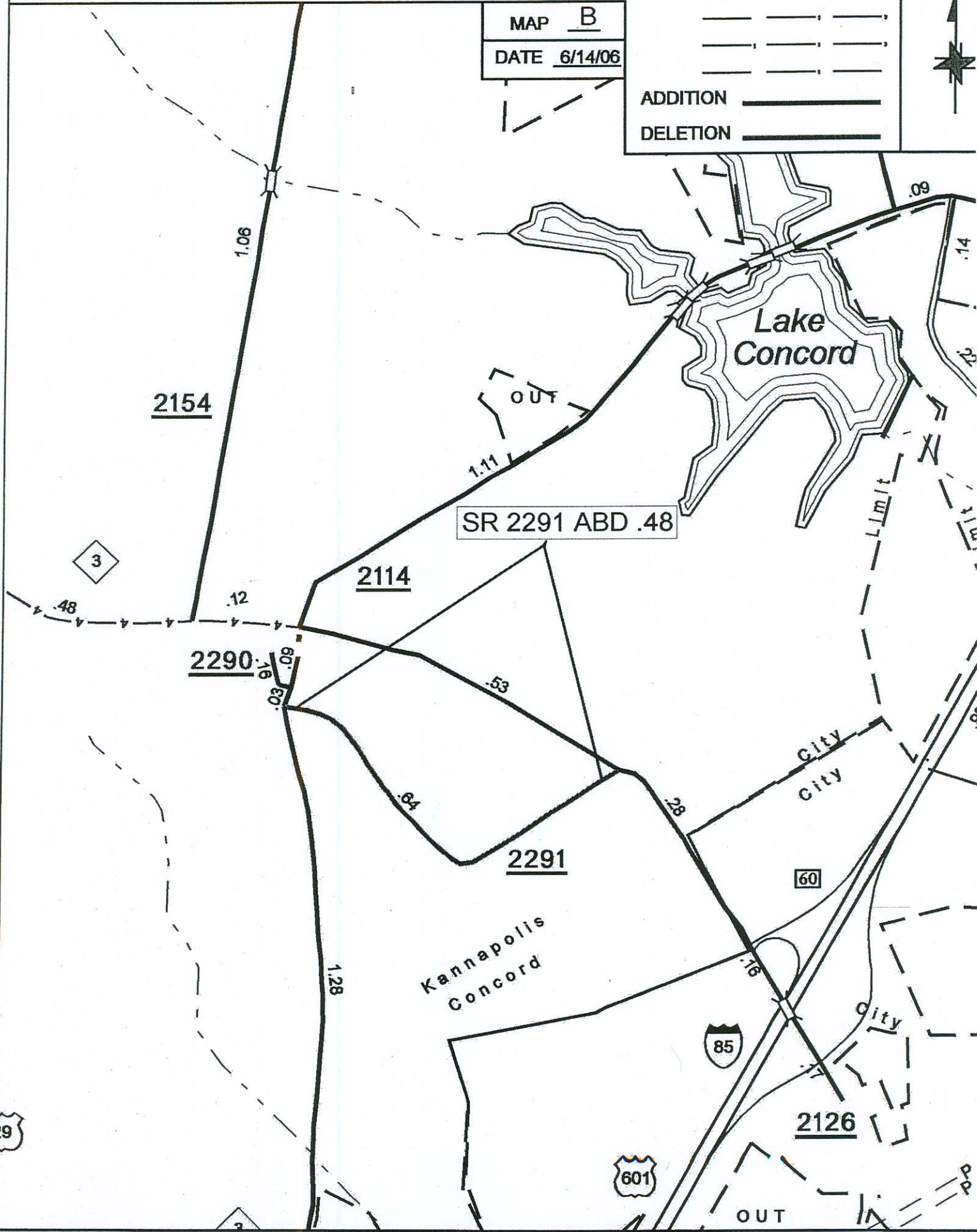
CO: Cabarrus

SR #: 2291, \_\_\_\_\_, \_\_\_\_\_

MAP B  
DATE 6/14/06

ADDITION \_\_\_\_\_

DELETION \_\_\_\_\_



SOURCE: Plat

SHEET: 3 OF 4

NAME: RLN

SCALE: 4 to 1