



STATE OF NORTH CAROLINA  
DEPARTMENT OF TRANSPORTATION

LYNDO TIPPETT  
SECRETARY

MICHAEL F. EASLEY  
GOVERNOR

May 15, 2007

**MEMORANDUM TO:** Mr. Timothy Johnson, PE  
Division Engineer  
Division 8

**FROM:** L.C. Smith  
GIS Director

**SUBJECT:** 2006 District 2 Road System Changes

The Road Inventory Section has been authorized to make the following changes to the state road system as indicated below. We request that you make similar changes to the related maps and files in your Division and District offices, and install appropriate road number signs if necessary. We have updated our records and county maps accordingly. If our system changes do not conform to the actual conditions in the field, please return this memorandum with recommendations.

Petition Number	County	Approval Date
47743	HOKE	2/2/2006

Inquires about secondary road petition changes should be referred to Ron Tucker, Secondary Roads Group Supervisor at (919) 212-6080. Inquires about TIP Project changes should be referred to Tom Schroeder, Primary Highway Group Supervisor at (919) 212-6074. If you have further questions, please contact Hardee Cox, Road Inventory Manager at (919) 212-6060. Thank you for your assistance.

LCS/hrc  
enclosures ( )

- cc: BSIP  
Bridge Maintenance  
Division Right of Way  
Pavement Management  
Permit Unit  
State Road Maintenance  
Traffic Engineering  
Traffic Surveys

**MAILING ADDRESS:**  
NC DEPARTMENT OF TRANSPORTATION  
GEOGRAPHIC INFORMATION SYSTEMS  
1587 MAIL SERVICE CENTER  
RALEIGH, NC 27699-1587



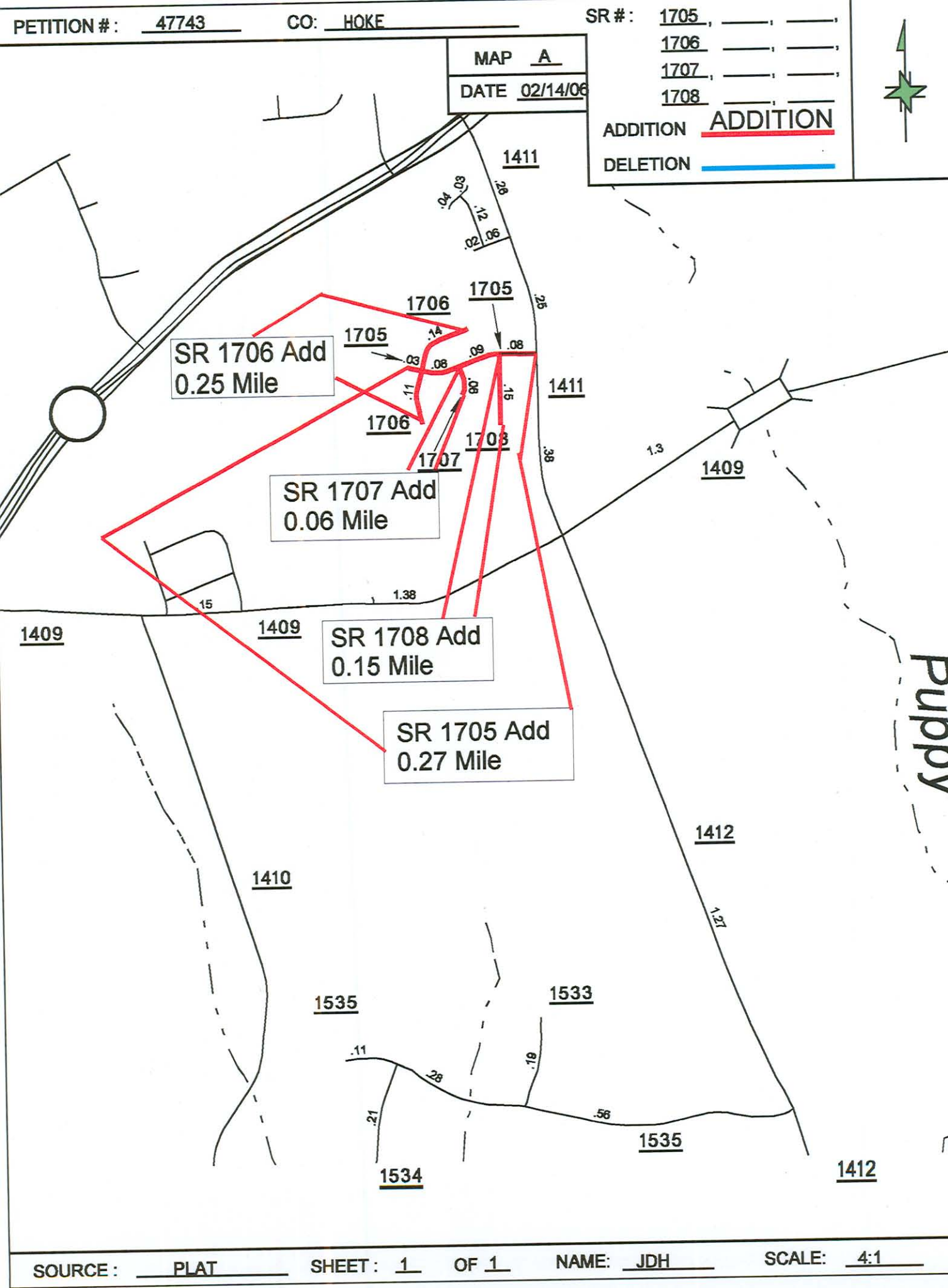
**DELIVERY ADDRESS:**  
3401 CARL SANDBURG CENTER  
RALEIGH, NC 27611  
PHONE: (919) 212-6000  
FAX: (919) 212-5990

# 2006 ROAD SYSTEM CHANGES

PETITION NUMBER	COUNTY	APPROVAL DATE	NEW NUMBER	EXISTING NUMBER	STREET NAME	LENGTH (miles)	TYPE OF CHANGE	REMARKS (See Attached Map)
47743	HOKE	2/2/2006	SR 1708		GARFIELD DRIVE	0.15	SYSTEM ADDITION VIA PETITION	MAP A, SEGMENT 1
47743	HOKE	2/2/2006	SR 1707		HAYES COURT	0.06	SYSTEM ADDITION VIA PETITION	MAP A, SEGMENT 1
47743	HOKE	2/2/2006	SR 1706		VAN BUREN DRIVE	0.25	SYSTEM ADDITION VIA PETITION	MAP A, SEGMENT 1
47743	HOKE	2/2/2006	SR 1705		TRUMAN DRIVE	0.27	SYSTEM ADDITION VIA PETITION	MAP A, SEGMENT 1

MAP A  
DATE 02/14/06

ADDITION ADDITION  
DELETION \_\_\_\_\_



SR 1706 Add  
0.25 Mile

SR 1707 Add  
0.06 Mile

SR 1708 Add  
0.15 Mile

SR 1705 Add  
0.27 Mile