



STATE OF NORTH CAROLINA
DEPARTMENT OF TRANSPORTATION

MICHAEL F. EASLEY
GOVERNOR

June 27, 2007

LYNDO TIPPETT
SECRETARY

MEMORANDUM TO: Mr. Barry S. Moose, PE
Division Engineer
Division 10

FROM: L.C. Smith
GIS Director

SUBJECT: 2006 District 2 Road Sytem Changes

The Data Compilation Section has been authorized to make the following changes to the state road system as indicated below. We request that you make similar changes to the related maps and files in your Division and District offices, and install appropriate road number signs if necessary. We have updated our records and county maps accordingly. If our system changes do not conform to the actual conditions in the field, please return this memorandum with recommendations.

Municipality	County	Approval Date
CHARLOTTE	MECKLENBURG	11/9/2005

Inquires about changes should be referred to one of the following: Ron Tucker (Div 3,6,7,8) at (919) 212-6080, Ron Nealy (Div 5,9,11,13,14) at (919) 212-5980, or Lori Mann (Div 1,2,4,10,12) at (919) 212-6075. If you have further questions, please contact Hardee Cox, Data Compilation Section Manger at (919) 212-6060. Thank you for your assistance.

LCS/hrc
enclosures ()

cc: BSIP
Bridge Maintenance
Division Right of Way
Pavement Management
Permit Unit
State Road Maintenance
Traffic Engineering
Traffic Surveys

MAILING ADDRESS:
NC DEPARTMENT OF TRANSPORTATION
GEOGRAPHIC INFORMATION SYSTEMS
1587 MAIL SERVICE CENTER
RALEIGH NC 27699-1587

www.ncdot.org/it/gis

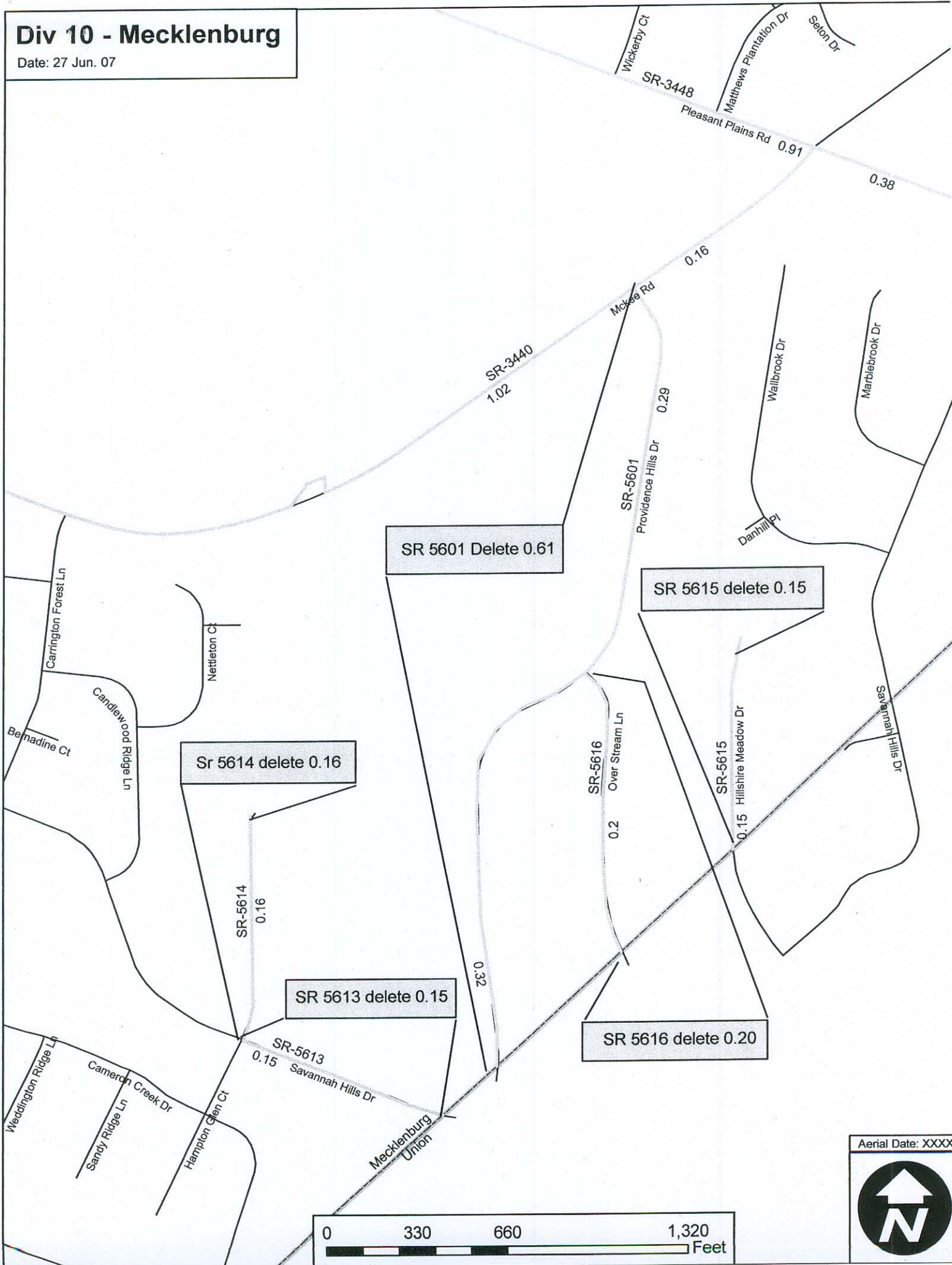
DELIVERY ADDRESS:
3401 CARL SANDBURG CT.
RALEIGH, NC 27610
PHONE: (919) 212-6000
FAX: (919) 212-5999

2006 ROAD SYSTEM CHANGES

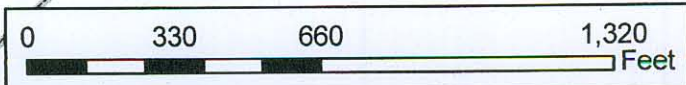
MUNICIPALITY	COUNTY	APPROVAL DATE	NEW NUMBER	EXISTING NUMBER	STREET NAME	LENGTH (miles)	TYPE OF CHANGE	REMARKS (See Attached Map)
CHARLOTTE	MECKLENBURG	11/9/2005		SR 5616	OVER STREAM LN	0.20	SYSTEM DELETION VIA MUNICIPAL AGREEMENT	MAP , SEGMENT
CHARLOTTE	MECKLENBURG	11/9/2005		SR 5615	HILLSHIRE MEADOW DR	0.15	SYSTEM DELETION VIA MUNICIPAL AGREEMENT	MAP , SEGMENT
CHARLOTTE	MECKLENBURG	11/9/2005		SR 5614	HAMPTON GLEN CT	0.16	SYSTEM DELETION VIA MUNICIPAL AGREEMENT	MAP , SEGMENT
CHARLOTTE	MECKLENBURG	11/9/2005		SR 5613	SAVANNAH HILLS DR	0.15	SYSTEM DELETION VIA MUNICIPAL AGREEMENT	MAP , SEGMENT
CHARLOTTE	MECKLENBURG	11/9/2005		SR 5601	PROVIDENCE HILLS DR	0.61	SYSTEM DELETION VIA MUNICIPAL AGREEMENT	MAP , SEGMENT
CHARLOTTE	MECKLENBURG	11/9/2005		SR 5371	MALLARD GREEN PL.	0.02	SYSTEM DELETION VIA MUNICIPAL AGREEMENT	MAP , SEGMENT
CHARLOTTE	MECKLENBURG	11/9/2005		SR 5370	MALLARD PINE CT	0.03	SYSTEM DELETION VIA MUNICIPAL AGREEMENT	MAP , SEGMENT
CHARLOTTE	MECKLENBURG	11/9/2005		SR 5367	LANSHIRE CT.	0.03	SYSTEM DELETION VIA MUNICIPAL AGREEMENT	MAP , SEGMENT
CHARLOTTE	MECKLENBURG	11/9/2005		SR 5366	SHELLY PINES DR	0.17	SYSTEM DELETION VIA MUNICIPAL AGREEMENT	MAP , SEGMENT
CHARLOTTE	MECKLENBURG	11/9/2005		SR 5365	CHERYL ANNE PL.	0.12	SYSTEM DELETION VIA MUNICIPAL AGREEMENT	MAP , SEGMENT
CHARLOTTE	MECKLENBURG	11/9/2005		SR 5364	MALLARD WOODS PL.	0.23	SYSTEM DELETION VIA MUNICIPAL AGREEMENT	MAP , SEGMENT
CHARLOTTE	MECKLENBURG	11/9/2005		SR 2002	ABERNATHY RD	0.32	SYSTEM DELETION VIA MUNICIPAL AGREEMENT	MAP , SEGMENT

Div 10 - Mecklenburg

Date: 27 Jun. 07

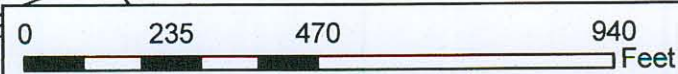
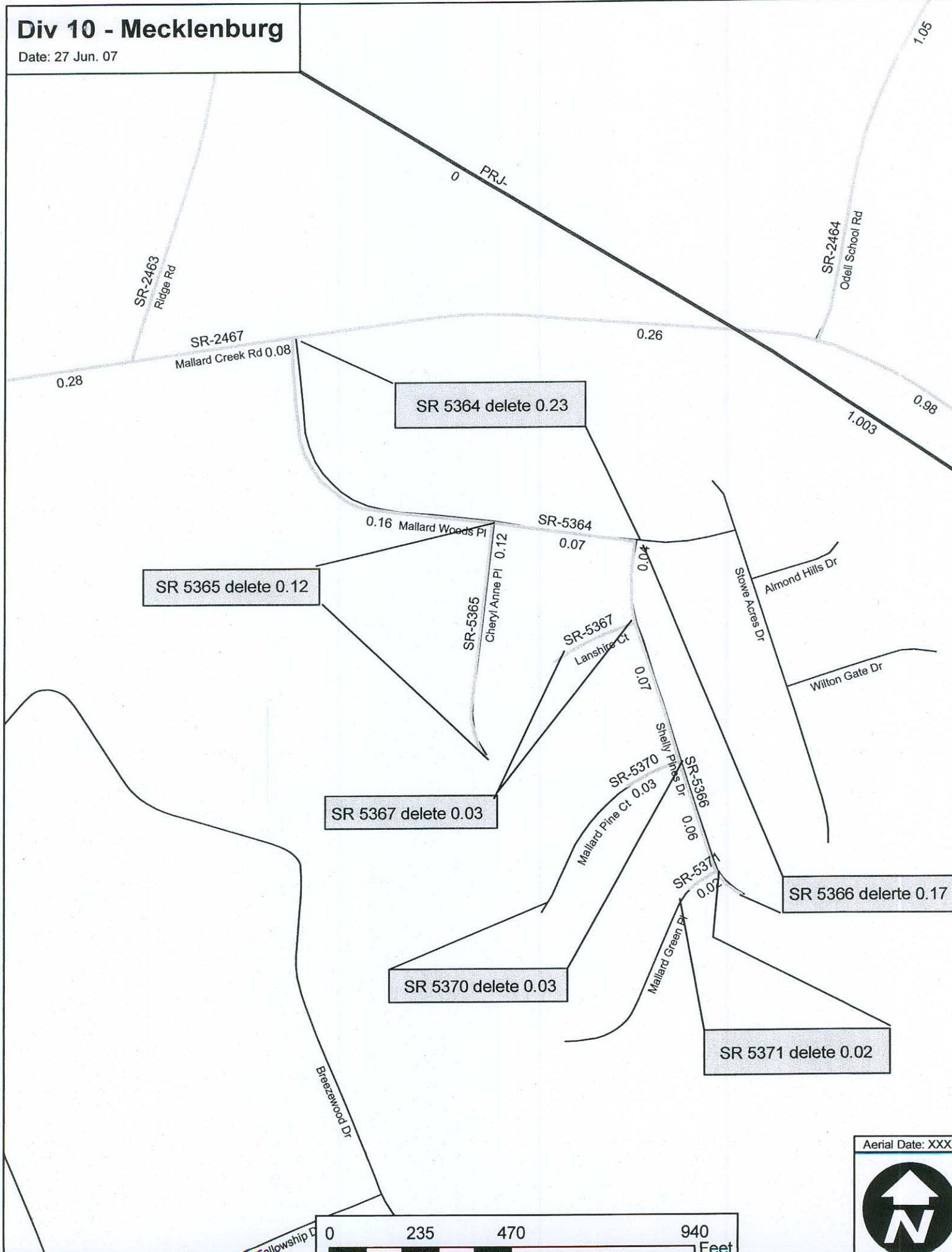


Aerial Date: XXXX



Div 10 - Mecklenburg

Date: 27 Jun. 07



Aerial Date: XXXX

N

Div 10 - Mecklenburg

Date: 27 Jun. 07

Grove Rd

SR 2002 delete 0.32

Abernathy Rd

SR-2002
0.32

SR-2004
0.58

Worsville Rd



Aerial Date: XXXX

