



STATE OF NORTH CAROLINA
DEPARTMENT OF TRANSPORTATION

MICHAEL F EASLEY
GOVERNOR

November 09, 2005

LYNDO TIPPETT
SECRETARY

MEMORANDUM TO: Mr. Benton G Payne, PE
Division Engineer
Division 10

FROM: L.C Smith
GIS Director

SUBJECT: 2005 District 3 Road System Changes

The Road Inventory Section has been authorized to make the following changes to the state road system as indicated below We request that you make similar changes to the related maps and files in your Division and District offices, and install appropriate road number signs if necessary. We have updated our records and county maps accordingly. If our system changes do not conform to the actual conditions in the field, please return this memorandum with recommendations.

Petition Number	County	Approval Date
47641	UNION	11/3/2005

Inquires about secondary road petition changes should be referred to Ron Tucker, Secondary Roads Group Supervisor at (919) 212-6080. Inquires about TIP Project changes should be referred to Tom Schroeder, Primary Highway Group Supervisor at (919) 212-6074. If you have further questions, please contact Hardee Cox, Road Inventory Manager at (919) 212-6060. Thank you for your assistance

LCS/hrc
enclosures ()

- cc: BSIP
Bridge Maintenance
Pavement Management
Permit Unit
Right of Way
Safety Management
State Road Maintenance
Traffic Engineering
Traffic Surveys

MAILING ADDRESS:
NC DEPARTMENT OF TRANSPORTATION
GEOGRAPHIC INFORMATION SYSTEMS
1587 MAIL SERVICE CENTER
RALEIGH NC 27699 1587



DELIVERY ADDRESS:
3401 CARL SANDBURG CT
RALEIGH, NC 27610
PHONE (919) 212-6000
FAX (919) 212 5999

2005 ROAD SYSTEM CHANGES

PETITION NUMBER	COUNTY	APPROVAL DATE	NEW NUMBER	EXISTING NUMBER	STREET NAME	LENGTH (miles)	TYPE OF CHANGE	REMARKS (See Attached Map)
47641	UNION	11/3/2005	SR 3333		MONTANE RUN	0.25	SYSTEM ADDITION VIA PETITION	MAP A, SEGMENT
47641	UNION	11/3/2005	SR 3332		PTARMIGAN COURT	0.04	SYSTEM ADDITION VIA PETITION	MAP A, SEGMENT
47641	UNION	11/3/2005	SR 3331		SILK POND DRIVE	0.13	SYSTEM ADDITION VIA PETITION	MAP A, SEGMENT
47641	UNION	11/3/2005	SR 3330		RESOLUTION COURT	0.08	SYSTEM ADDITION VIA PETITION	MAP A, SEGMENT
47641	UNION	11/3/2005	SR 3329		PRIMA CORNICE CT	0.14	SYSTEM ADDITION VIA PETITION	MAP A, SEGMENT
47641	UNION	11/3/2005	SR 3328		AVANTI DRIVE	0.66	SYSTEM ADDITION VIA PETITION	MAP A, SEGMENT

PETITION #: 47641

CO UNION

SR #: 3328, 3329, 3330,

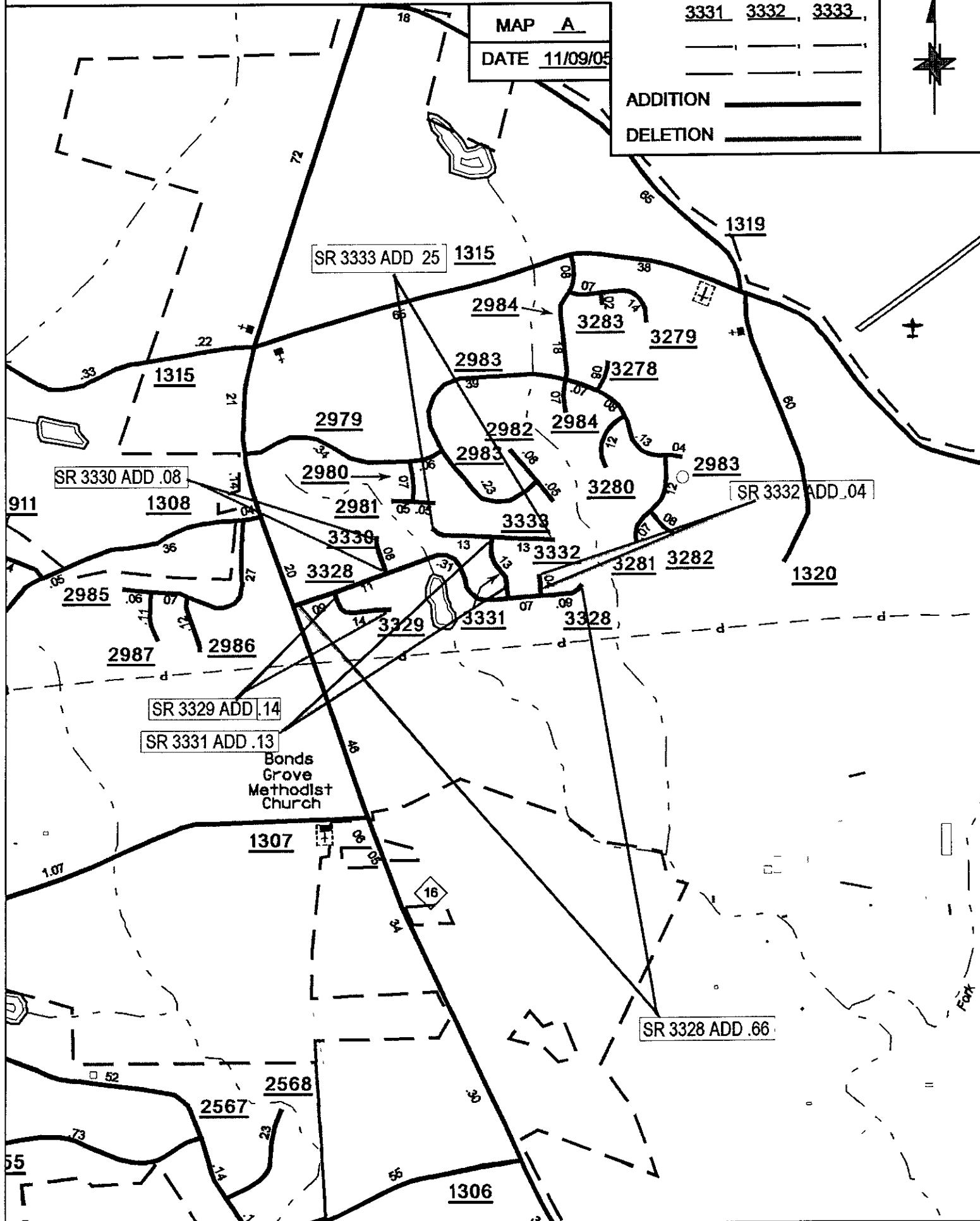
3331, 3332, 3333,

MAP A

DATE 11/09/05

ADDITION

DELETION



SOURCE: PLAT

SHEET: 3 OF 7

NAME: YRT

SCALE: 4:1