



STATE OF NORTH CAROLINA  
DEPARTMENT OF TRANSPORTATION

MICHAEL F. EASLEY  
GOVERNOR

September 21, 2005

LYNDO TIPPETT  
SECRETARY

**MEMORANDUM TO:** Mr. S. Pat Ivey, PE  
Division Engineer  
Division 9

**FROM:** L.C. Smith  
GIS Director

**SUBJECT:** 2005 District 2 Road System Changes

The Road Inventory Section has been authorized to make the following changes to the state road system as indicated below. We request that you make similar changes to the related maps and files in your Division and District offices, and install appropriate road number signs if necessary. We have updated our records and county maps accordingly. If our system changes do not conform to the actual conditions in the field, please return this memorandum with recommendations.

Municipality	County	Approval Date
LEWISVILLE	FORSYTH	9/1/05

Inquires about secondary road petition changes should be referred to Ron Tucker, Secondary Roads Group Supervisor at (919) 212-6080. Inquires about TIP Project changes should be referred to Tom Schroeder, Primary Highway Group Supervisor at (919) 212-6074. If you have further questions, please contact Hardee Cox, Road Inventory Manager at (919) 212-6060. Thank you for your assistance.

LCS/hrc  
enclosures ( )

cc: BSIP  
Bridge Maintenance  
Pavement Management  
Permit Unit  
Right of Way  
Safety Management  
State Road Maintenance  
Traffic Engineering  
Traffic Surveys

**MAILING ADDRESS:**  
NC DEPARTMENT OF TRANSPORTATION  
GEOGRAPHIC INFORMATION SYSTEMS  
1587 MAIL SERVICE CENTER  
RALEIGH NC 27699-1587



[www.ncdot.org/statewide/planning/gis](http://www.ncdot.org/statewide/planning/gis)

**DELIVERY ADDRESS:**  
3401 CARL SANDBURG CT.  
RALEIGH, NC 27610  
PHONE: (919) 212-6000  
FAX: (919) 212-5999

# 2005 ROAD SYSTEM CHANGES

MUNICIPALITY	COUNTY	APPROVAL DATE	NEW NUMBER	EXISTING NUMBER	STREET NAME	LENGTH (miles)	TYPE OF CHANGE	REMARKS (See Attached Map)
LEWISVILLE	FORSYTH	9/1/05		SR 3237	MONOA ROAD	0.29	SYSTEM DELETION VIA	MAP A, SEGMENT 1
LEWISVILLE	FORSYTH	9/1/05		SR 3301	SPRING FOREST DRIVE	0.51	MUNICIPAL AGREEMENT SYSTEM DELETION VIA	MAP A, SEGMENT 1
LEWISVILLE	FORSYTH	9/1/05		SR 3300	DEFOREST COURT	0.05	MUNICIPAL AGREEMENT SYSTEM DELETION VIA	MAP A, SEGMENT 1
LEWISVILLE	FORSYTH	9/1/05		SR 3299	ROBIN HOOD FOREST	0.27	MUNICIPAL AGREEMENT SYSTEM DELETION VIA	MAP A, SEGMENT 1
LEWISVILLE	FORSYTH	9/1/05		SR 3289	BENSON LANE	0.14	MUNICIPAL AGREEMENT SYSTEM DELETION VIA	MAP A, SEGMENT 1
LEWISVILLE	FORSYTH	9/1/05		SR 3288	PINE CONE DRIVE	0.12	MUNICIPAL AGREEMENT SYSTEM DELETION VIA	MAP A, SEGMENT 1
LEWISVILLE	FORSYTH	9/1/05		SR 3261	VIENNA FOREST DRIVE	0.34	MUNICIPAL AGREEMENT SYSTEM DELETION VIA	MAP A, SEGMENT 1
LEWISVILLE	FORSYTH	9/1/05		SR 3254	WARBLER ROAD	0.11	MUNICIPAL AGREEMENT SYSTEM DELETION VIA	MAP A, SEGMENT 1
LEWISVILLE	FORSYTH	9/1/05		SR 3253	GOLDFINCH DRIVE	0.09	MUNICIPAL AGREEMENT SYSTEM DELETION VIA	MAP A, SEGMENT 1
LEWISVILLE	FORSYTH	9/1/05		SR 3252	LARKWOOD DRIVE	0.16	MUNICIPAL AGREEMENT SYSTEM DELETION VIA	MAP A, SEGMENT 1
LEWISVILLE	FORSYTH	9/1/05		SR 3248	PINE TRAILS ROAD	0.35	MUNICIPAL AGREEMENT SYSTEM DELETION VIA	MAP A, SEGMENT 1
LEWISVILLE	FORSYTH	9/1/05		SR 3240	KAHALA COURT	0.04	MUNICIPAL AGREEMENT SYSTEM DELETION VIA	MAP A, SEGMENT 1
LEWISVILLE	FORSYTH	9/1/05		SR 1304	PLEMMONS ROAD	0.40	MUNICIPAL AGREEMENT SYSTEM DELETION VIA	MAP A, SEGMENT 1

MUNICIPALITY	COUNTY	APPROVAL DATE	NEW NUMBER	EXISTING NUMBER	STREET NAME	LENGTH (miles)	TYPE OF CHANGE	REMARKS (See Attached Map)
LEWISVILLE	FORSYTH	9/1/05		SR 3238	LEWARD ROAD	0.08	SYSTEM DELETION VIA MUNICIPAL AGREEMENT	MAP A, SEGMENT 1
LEWISVILLE	FORSYTH	9/1/05		SR 3308	SEAL DRIVE	0.18	SYSTEM DELETION VIA MUNICIPAL AGREEMENT	MAP A, SEGMENT 1
LEWISVILLE	FORSYTH	9/1/05		SR 3215	BROOKBANK DRIVE	0.28	SYSTEM DELETION VIA MUNICIPAL AGREEMENT	MAP A, SEGMENT 1
LEWISVILLE	FORSYTH	9/1/05		SR 3202	RUNABOUT ROAD	0.25	SYSTEM DELETION VIA MUNICIPAL AGREEMENT	MAP A, SEGMENT 1
LEWISVILLE	FORSYTH	9/1/05		SR 3201	PROUD STREET	0.14	SYSTEM DELETION VIA MUNICIPAL AGREEMENT	MAP A, SEGMENT 1
LEWISVILLE	FORSYTH	9/1/05		SR 1527	RAINBOW AVENUE	0.16	SYSTEM DELETION VIA MUNICIPAL AGREEMENT	MAP A, SEGMENT 1
LEWISVILLE	FORSYTH	9/1/05		SR 1526	GOSLEN DRIVE	0.45	SYSTEM DELETION VIA MUNICIPAL AGREEMENT	MAP A, SEGMENT 1
LEWISVILLE	FORSYTH	9/1/05		SR 1448	NEEDHAM ROAD	0.20	SYSTEM DELETION VIA MUNICIPAL AGREEMENT	MAP A, SEGMENT 1
LEWISVILLE	FORSYTH	9/1/05		SR 1440	BEROTH CIRCLE	0.60	SYSTEM DELETION VIA MUNICIPAL AGREEMENT	MAP A, SEGMENT 1
LEWISVILLE	FORSYTH	9/1/05		SR 1439	JONATHAN STREET		SYSTEM DELETION VIA MUNICIPAL AGREEMENT	MAP A, SEGMENT 1
LEWISVILLE	FORSYTH	9/1/05		SR 1438	TOM STREET	0.12	SYSTEM DELETION VIA MUNICIPAL AGREEMENT	MAP A, SEGMENT 1
LEWISVILLE	FORSYTH	9/1/05		SR 1315	DEXTER DRIVE	0.22	SYSTEM DELETION VIA MUNICIPAL AGREEMENT	MAP A, SEGMENT 1
LEWISVILLE	FORSYTH	9/1/05		SR 1313	SHORE-CRAFT DRIVE	0.10	SYSTEM DELETION VIA MUNICIPAL AGREEMENT	MAP A, SEGMENT 1
LEWISVILLE	FORSYTH	9/1/05		SR 3239	WINWARD ROAD	0.08	SYSTEM DELETION VIA MUNICIPAL AGREEMENT	MAP A, SEGMENT 1

MUNICIPALITY	COUNTY	APPROVAL DATE	NEW NUMBER	EXISTING NUMBER	STREET NAME	LENGTH (miles)	TYPE OF CHANGE	REMARKS (See Attached Map)
LEWISVILLE	FORSYTH	9/1/05		SR 3354	GREENLY DRIVE	0.30	SYSTEM DELETION VIA MUNICIPAL AGREEMENT	MAP A, SEGMENT 1
LEWISVILLE	FORSYTH	9/1/05		SR 3743	BLAKLEY WAY LANE	0.05	SYSTEM DELETION VIA MUNICIPAL AGREEMENT	MAP A, SEGMENT 1
LEWISVILLE	FORSYTH	9/1/05		SR 3606	COUNTRY LANE (WEST)	0.21	SYSTEM DELETION VIA MUNICIPAL AGREEMENT	MAP A, SEGMENT 1
LEWISVILLE	FORSYTH	9/1/05		SR 3385	SHERRILL STREET	0.09	SYSTEM DELETION VIA MUNICIPAL AGREEMENT	MAP A, SEGMENT 1
LEWISVILLE	FORSYTH	9/1/05		SR 3384	STIEFER ROAD	0.09	SYSTEM DELETION VIA MUNICIPAL AGREEMENT	MAP A, SEGMENT 1
LEWISVILLE	FORSYTH	9/1/05		SR 3382	FAIRFIELD CREEK DRIVE	0.06	SYSTEM DELETION VIA MUNICIPAL AGREEMENT	MAP A, SEGMENT 1
LEWISVILLE	FORSYTH	9/1/05		SR 3380	TRISTRAM DRIVE	0.08	SYSTEM DELETION VIA MUNICIPAL AGREEMENT	MAP A, SEGMENT 1
LEWISVILLE	FORSYTH	9/1/05		SR 3379	PELLAM FOREST COURT	0.06	SYSTEM DELETION VIA MUNICIPAL AGREEMENT	MAP A, SEGMENT 1
LEWISVILLE	FORSYTH	9/1/05		SR 3377	BOUDWIN DRIVE	0.04	SYSTEM DELETION VIA MUNICIPAL AGREEMENT	MAP A, SEGMENT 1
LEWISVILLE	FORSYTH	9/1/05		SR 3376	BENWICKE COURT	0.04	SYSTEM DELETION VIA MUNICIPAL AGREEMENT	MAP A, SEGMENT 1
LEWISVILLE	FORSYTH	9/1/05		SR 3371	FAIRFIELD OAKS LANE	0.31	SYSTEM DELETION VIA MUNICIPAL AGREEMENT	MAP A, SEGMENT 1
LEWISVILLE	FORSYTH	9/1/05		SR 3359	PENDRAGON COURT	0.05	SYSTEM DELETION VIA MUNICIPAL AGREEMENT	MAP A, SEGMENT 1
LEWISVILLE	FORSYTH	9/1/05		SR 3306	CUTTERS CREEK COURT	0.12	SYSTEM DELETION VIA MUNICIPAL AGREEMENT	MAP A, SEGMENT 1
LEWISVILLE	FORSYTH	9/1/05		SR 3357	BENWICHE DRIVE	0.55	SYSTEM DELETION VIA MUNICIPAL AGREEMENT	MAP A, SEGMENT 1

MUNICIPALITY	COUNTY	APPROVAL DATE	NEW NUMBER	EXISTING NUMBER	STREET NAME	LENGTH (miles)	TYPE OF CHANGE	REMARKS (See Attached Map)
LEWISVILLE	FORSYTH	9/1/05		SR 3307	CUTTERS CREEK COURT	0.23	SYSTEM DELETION VIA MUNICIPAL AGREEMENT	MAP A, SEGMENT 1
LEWISVILLE	FORSYTH	9/1/05		SR 3353	FROSTY COURT	0.03	SYSTEM DELETION VIA MUNICIPAL AGREEMENT	MAP A, SEGMENT 1
LEWISVILLE	FORSYTH	9/1/05		SR 3346	FOX HORN CIRCLE	0.06	SYSTEM DELETION VIA MUNICIPAL AGREEMENT	MAP A, SEGMENT 1
LEWISVILLE	FORSYTH	9/1/05		SR 3345	HUNTING CREEK DRIVE	0.28	SYSTEM DELETION VIA MUNICIPAL AGREEMENT	MAP A, SEGMENT 1
LEWISVILLE	FORSYTH	9/1/05		SR 3334	PEACEFUL GLEN DRIVE	0.18	SYSTEM DELETION VIA MUNICIPAL AGREEMENT	MAP A, SEGMENT 1
LEWISVILLE	FORSYTH	9/1/05		SR 3330	WISPERING WIND DRIVE	0.24	SYSTEM DELETION VIA MUNICIPAL AGREEMENT	MAP A, SEGMENT 1
LEWISVILLE	FORSYTH	9/1/05		SR 3321	BARON'S RIDGE ROAD	0.09	SYSTEM DELETION VIA MUNICIPAL AGREEMENT	MAP A, SEGMENT 1
LEWISVILLE	FORSYTH	9/1/05		SR 3320	BARON'S RIDGE ROAD	0.10	SYSTEM DELETION VIA MUNICIPAL AGREEMENT	MAP A, SEGMENT 1
LEWISVILLE	FORSYTH	9/1/05		SR 3319	ROYAL RIDGE DRIVE	0.10	SYSTEM DELETION VIA MUNICIPAL AGREEMENT	MAP A, SEGMENT 1
LEWISVILLE	FORSYTH	9/1/05		SR 3318	ROBINHOOD TRACE DRIVE	0.34	SYSTEM DELETION VIA MUNICIPAL AGREEMENT	MAP A, SEGMENT 1
LEWISVILLE	FORSYTH	9/1/05		SR 3310	KENNETTE DRIVE	0.12	SYSTEM DELETION VIA MUNICIPAL AGREEMENT	MAP A, SEGMENT 1
LEWISVILLE	FORSYTH	9/1/05		SR 3309	REIF COURT	0.06	SYSTEM DELETION VIA MUNICIPAL AGREEMENT	MAP A, SEGMENT 1
LEWISVILLE	FORSYTH	9/1/05		SR 3744	CARTERS GROVE ROAD	0.21	SYSTEM DELETION VIA MUNICIPAL AGREEMENT	MAP A, SEGMENT 1
LEWISVILLE	FORSYTH	9/1/05		SR 3358	PELLINORE DRIVE	0.30	SYSTEM DELETION VIA MUNICIPAL AGREEMENT	MAP A, SEGMENT 1

PETITION #: MUN

CO: FORSYTH

SR #: 1526, 1527, 3288,  
3308, 3309, 3310,  
3345, 3346, \_\_\_\_\_

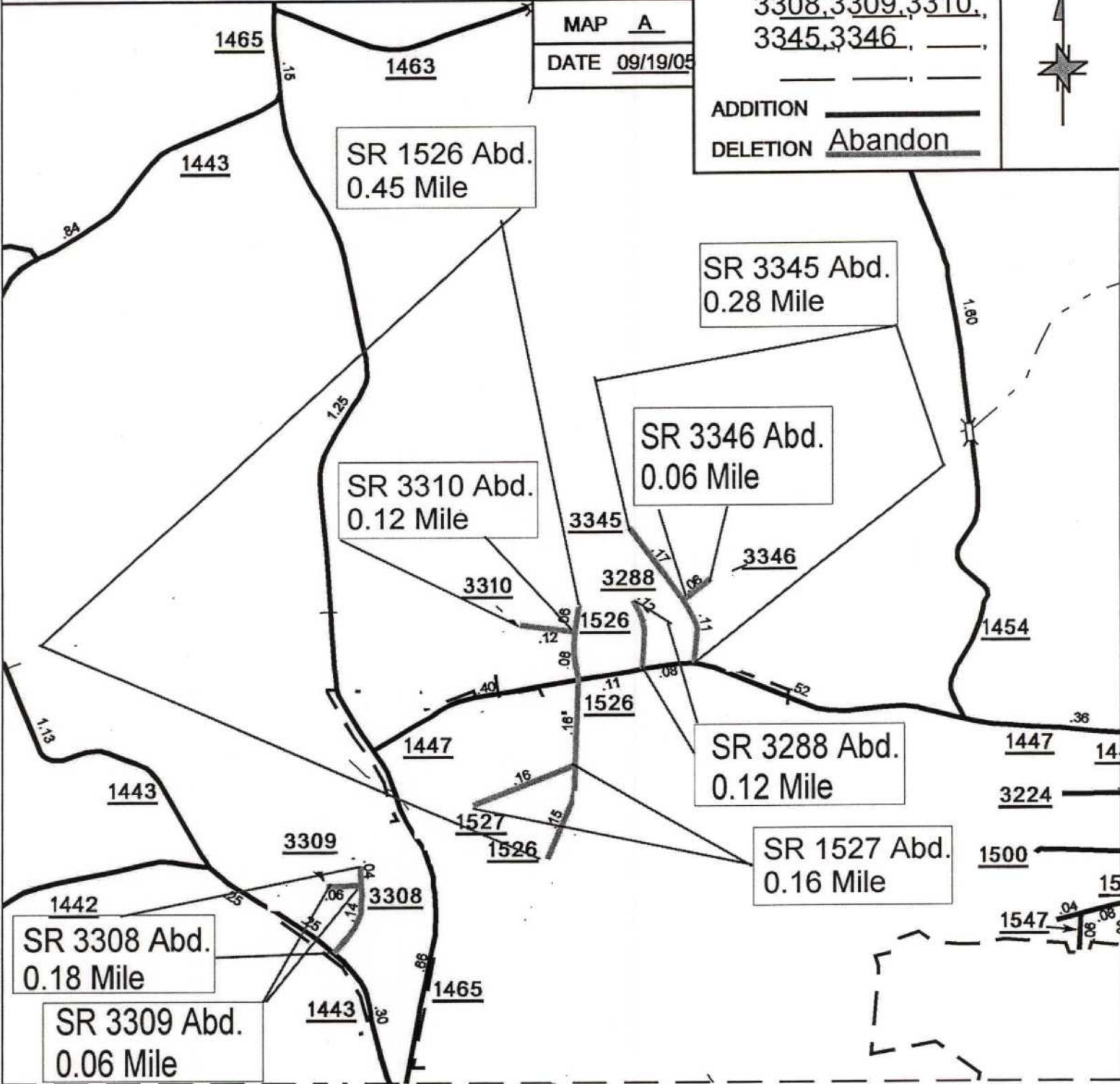


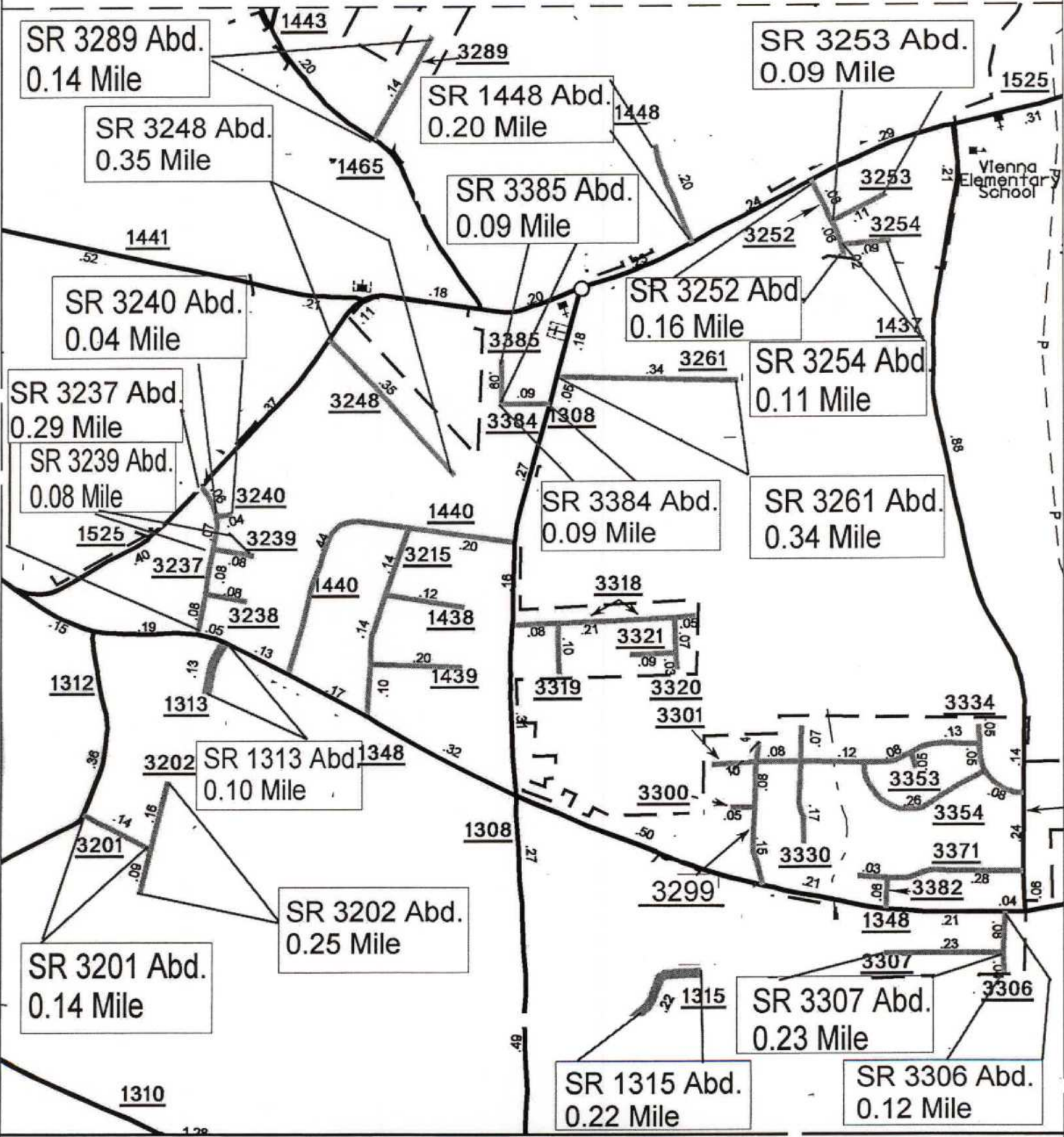
MAP A

DATE 09/19/05

ADDITION \_\_\_\_\_

DELETION Abandon





PETITION #: MUN

CO: FORSYTH

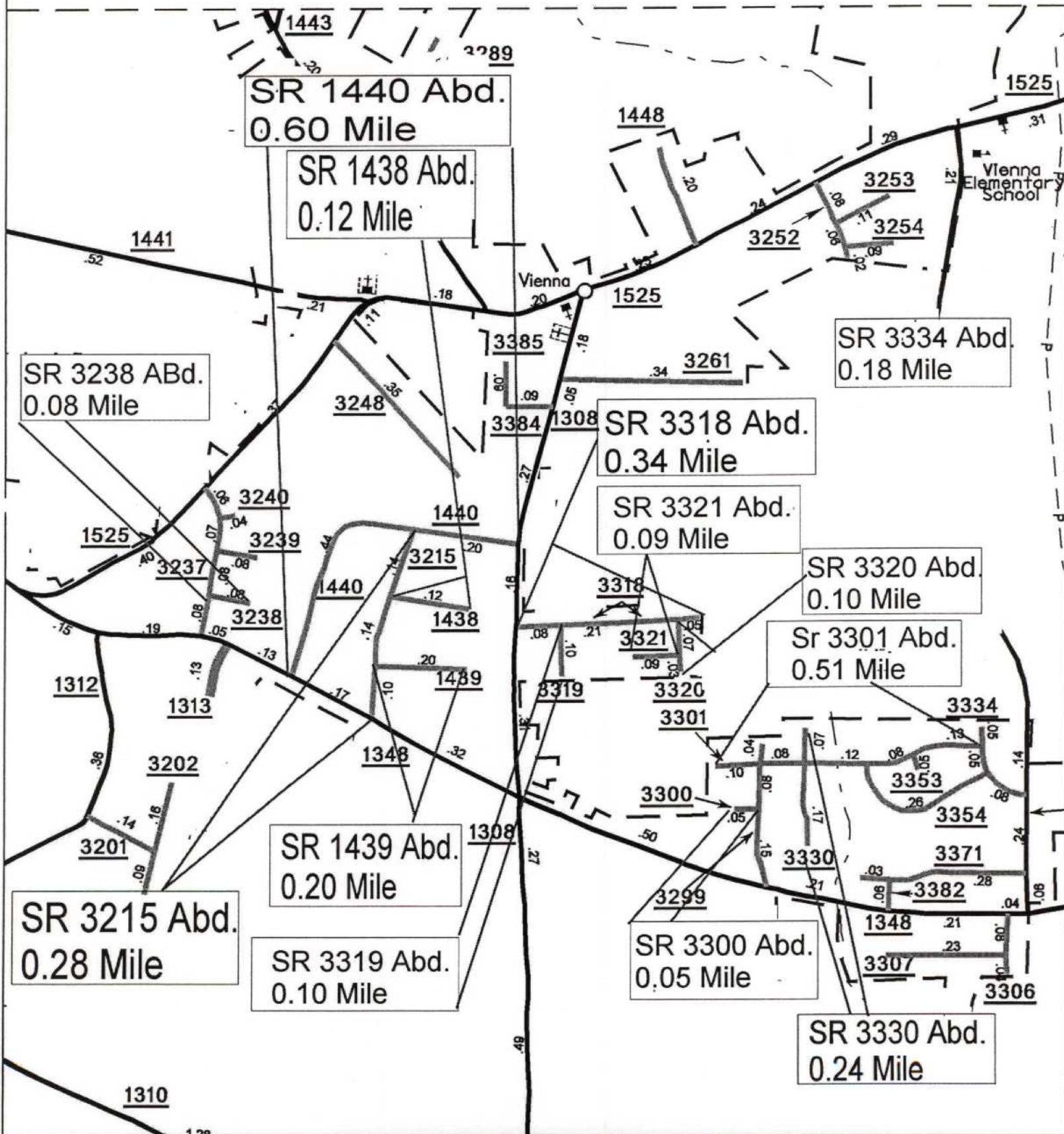
SR #: SR 1438,1439,

MAP B

DATE 09/19/05

1440,3215,3238,  
3300,3301,3318,  
3319,3320,3321,-  
3330,3334

DELETION Abandon



SOURCE: DOQQ

SHEET: 4 OF 6

NAME: YRT

SCALE: 4:1



PETITION #: MUN

CO: FORSYTH

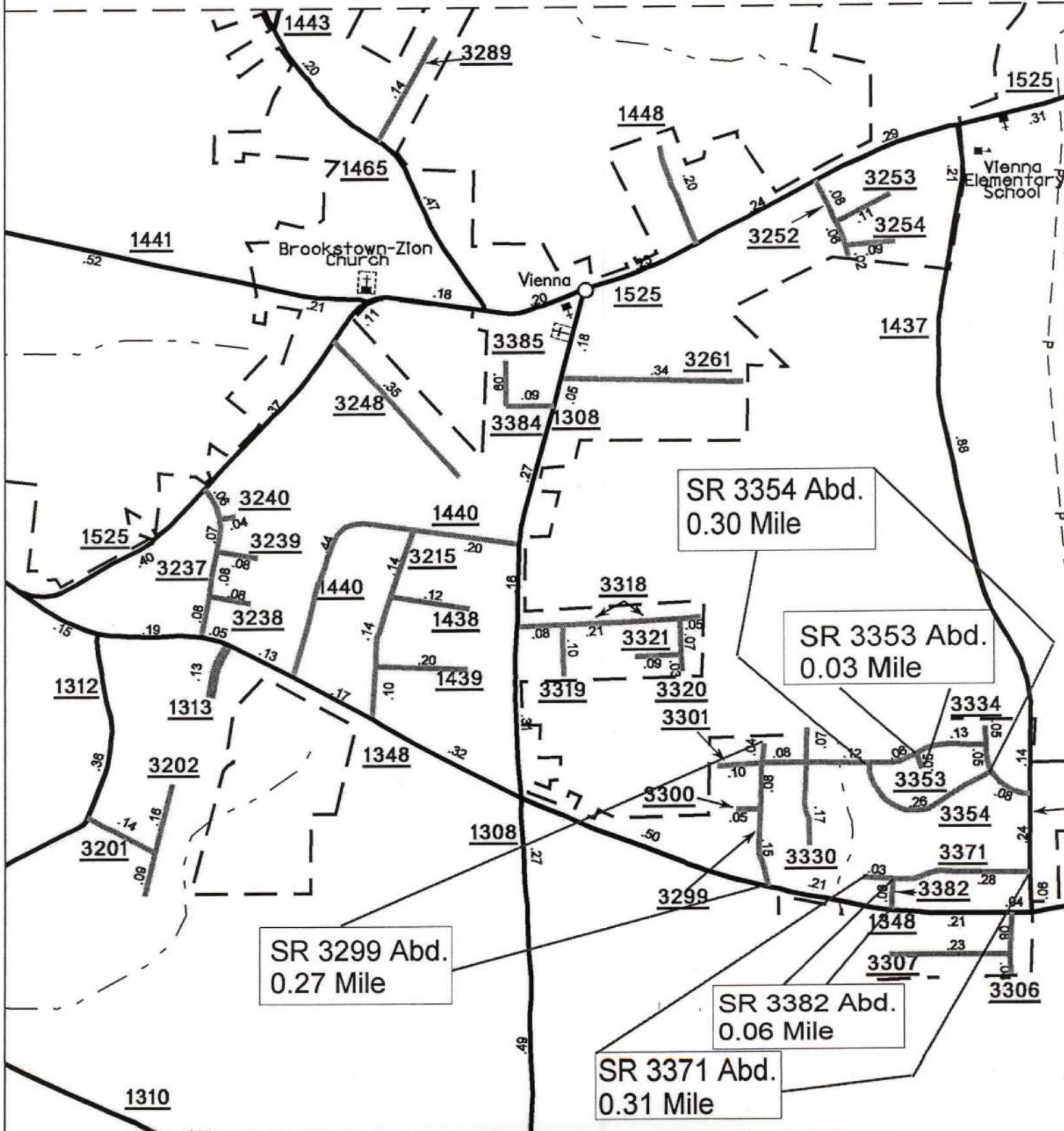
SR #: 3299, 3353,  
3354, 3371, 3382

MAP B

DATE 09/19/05

ADDITION \_\_\_\_\_

DELETION Abandon



PETITION #: MUN

CO: FORSYTH

SR #: 3357, 3358

3359, 3376

3377, 3379

3380

MAP C

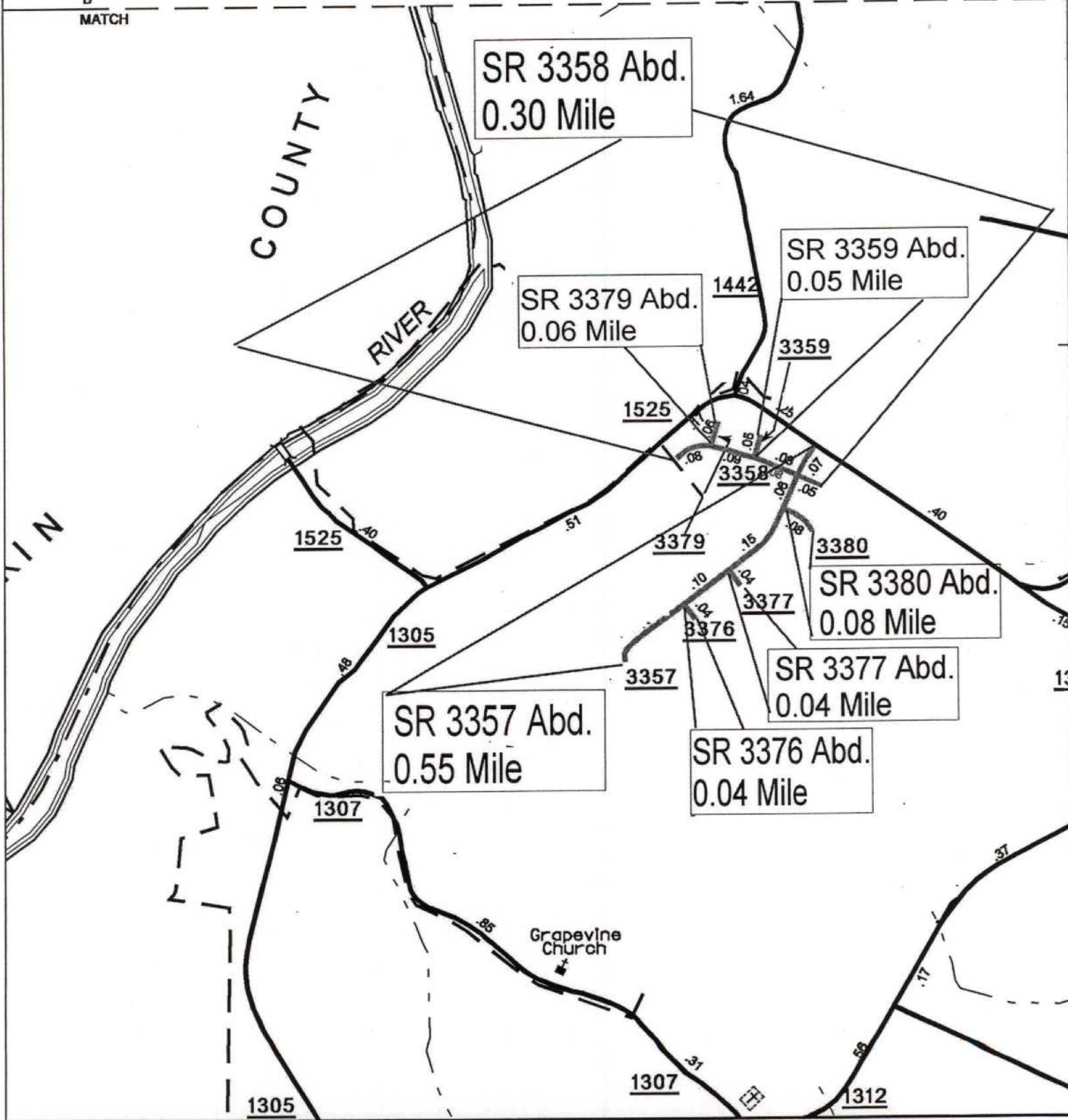
DATE 09/19/05

ADDITION \_\_\_\_\_

DELETION Abandon



B  
MATCH



SOURCE: DOQQ

SHEET: 4 OF 6

NAME: YRT

SCALE: 4:1

PETITION #: MUN

CO: FORSYTH

SR #: \_\_\_\_\_

MAP D

1304, 3606

DATE 09/19/05

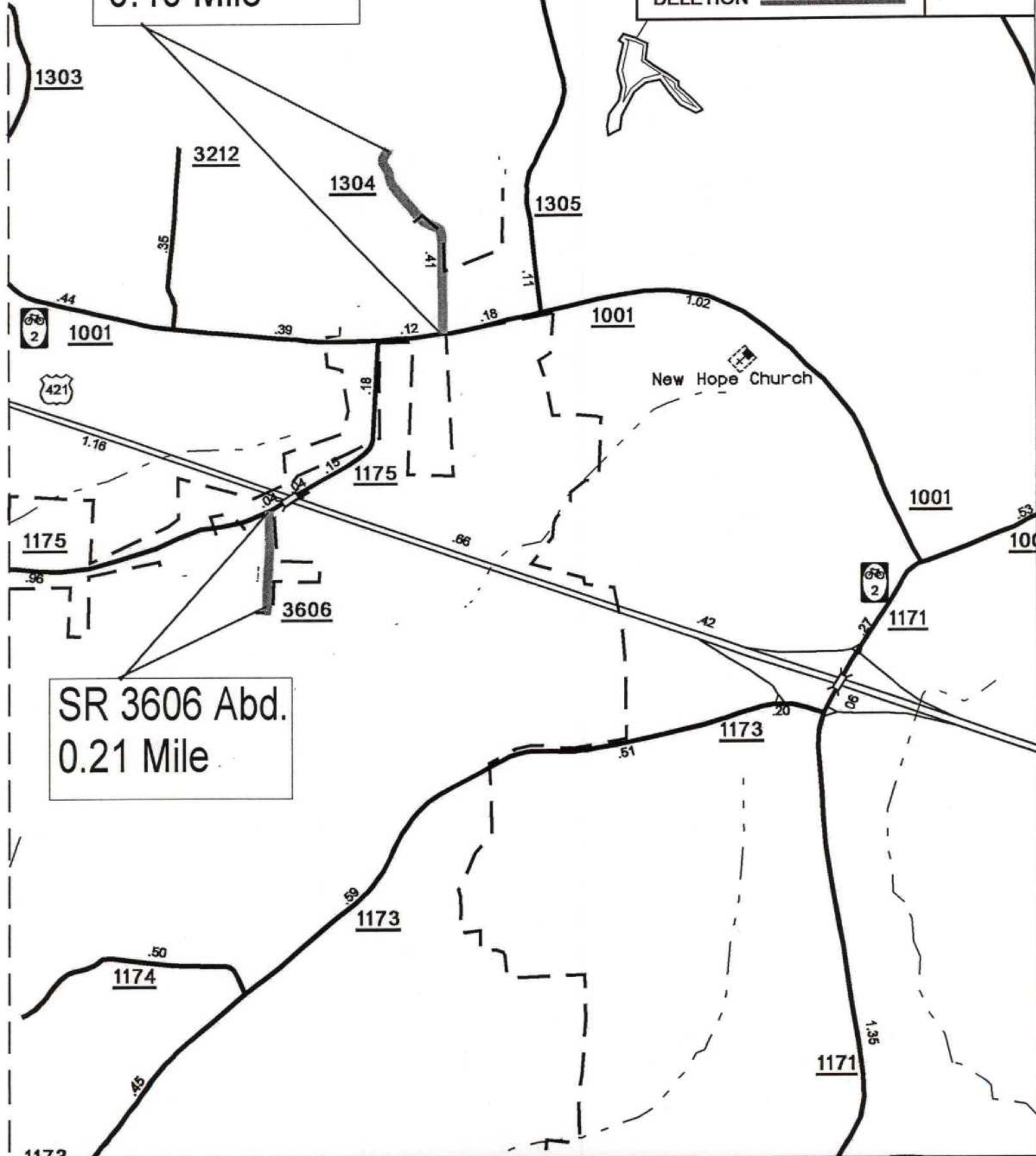
ADDITION \_\_\_\_\_

DELETION Abandon



SR 1304 Abd.  
0.40 Mile

SR 3606 Abd.  
0.21 Mile



SOURCE: DOQQ

SHEET: 4 OF 6

NAME: YRT

SCALE: 4:1

PETITION #: MUN

CO: FORSYTH

SR#:

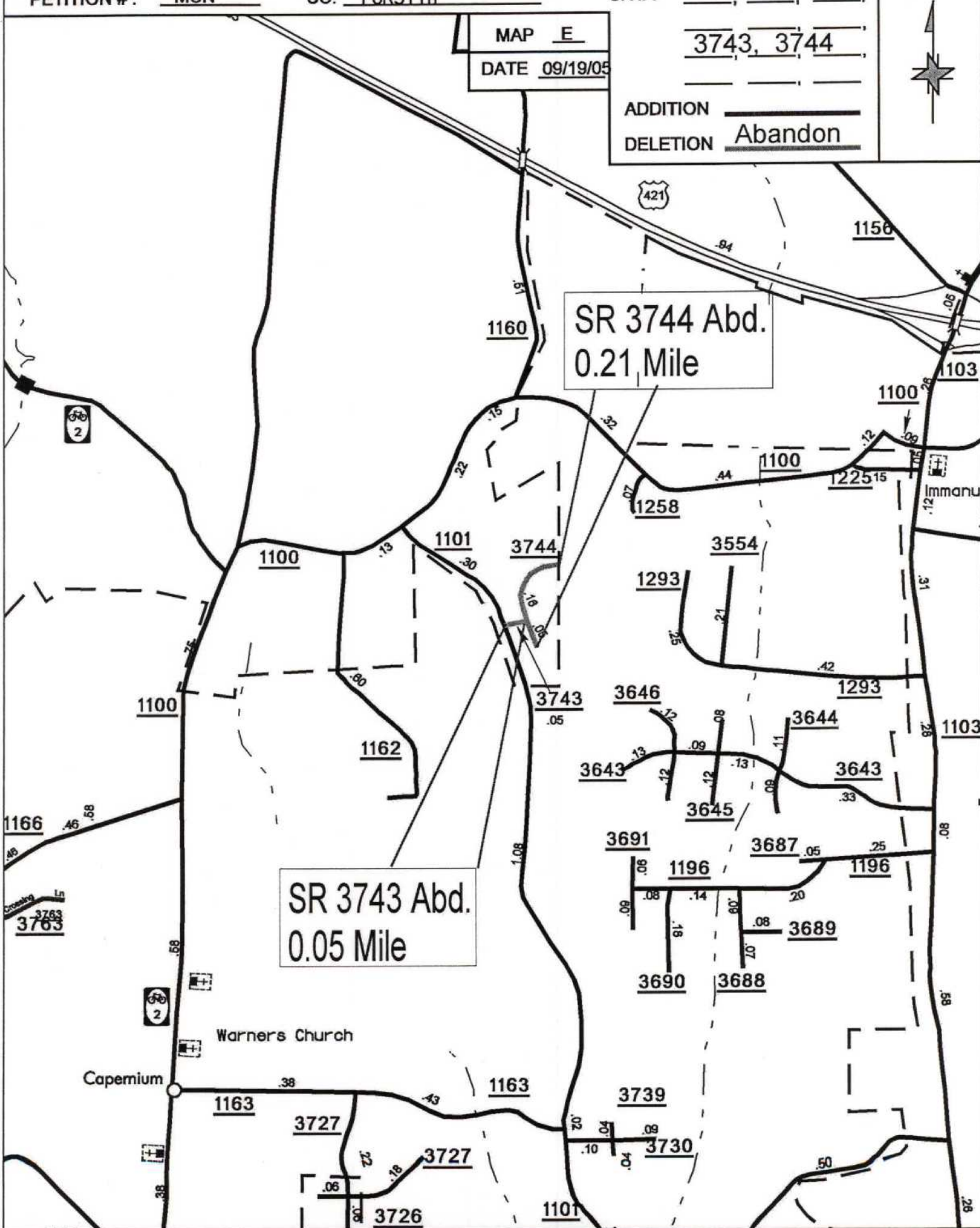
MAP E

DATE 09/19/05

3743, 3744

ADDITION \_\_\_\_\_

DELETION Abandon



SOURCE: DOQQ

SHEET: 4 OF 6

NAME: YRT

SCALE: 4:1