



STATE OF NORTH CAROLINA
DEPARTMENT OF TRANSPORTATION

MICHAEL F. EASLEY
GOVERNOR

Monday, June 25, 2007

LYNDO TIPPETT
SECRETARY

MEMORANDUM TO: Mr. S. Pat Ivey, PE
Division Engineer
Division 9

FROM: L.C. Smith
GIS Director

SUBJECT: 2006 District 1 Road System Changes

The Data Compilation Section has been authorized to make the following changes to the state road system as indicated below. We request that you make similar changes to the related maps and files in your Division and District offices, and install appropriate road number signs if necessary. We have updated our records and county maps accordingly. If our system changes do not conform to the actual conditions in the field, please return this memorandum with recommendations.

TIP Number	County	Approval Date
8.2603502	DAVIDSON	8/4/2005

Inquires about changes should be referred to one of the following: Ron Tucker (Div 3,6,7,8) at (919) 212-6080, Ron Nealy (Div 5,9,11,13,14) at (919) 212-5980, or Lori Mann (Div 1,2,4,10,12) at (919) 212-6075. If you have further questions, please contact Hardee Cox, Data Compilation Section Manger at (919) 212-6060. Thank you for your assistance.

LCS/hrc
enclosures ()

cc: BSIP
Bridge Maintenance
Division Right of Way
Pavement Management
Permit Unit
State Road Maintenance
Traffic Engineering
Traffic Surveys

MAILING ADDRESS:
NC DEPARTMENT OF TRANSPORTATION
GEOGRAPHIC INFORMATION SYSTEMS
1587 MAIL SERVICE CENTER
RALEIGH NC 27699-1587



DELIVERY ADDRESS:
3401 CARL SANDBURG CT.
RALEIGH, NC 27610
PHONE: (919) 212-6000
FAX: (919) 212-5999

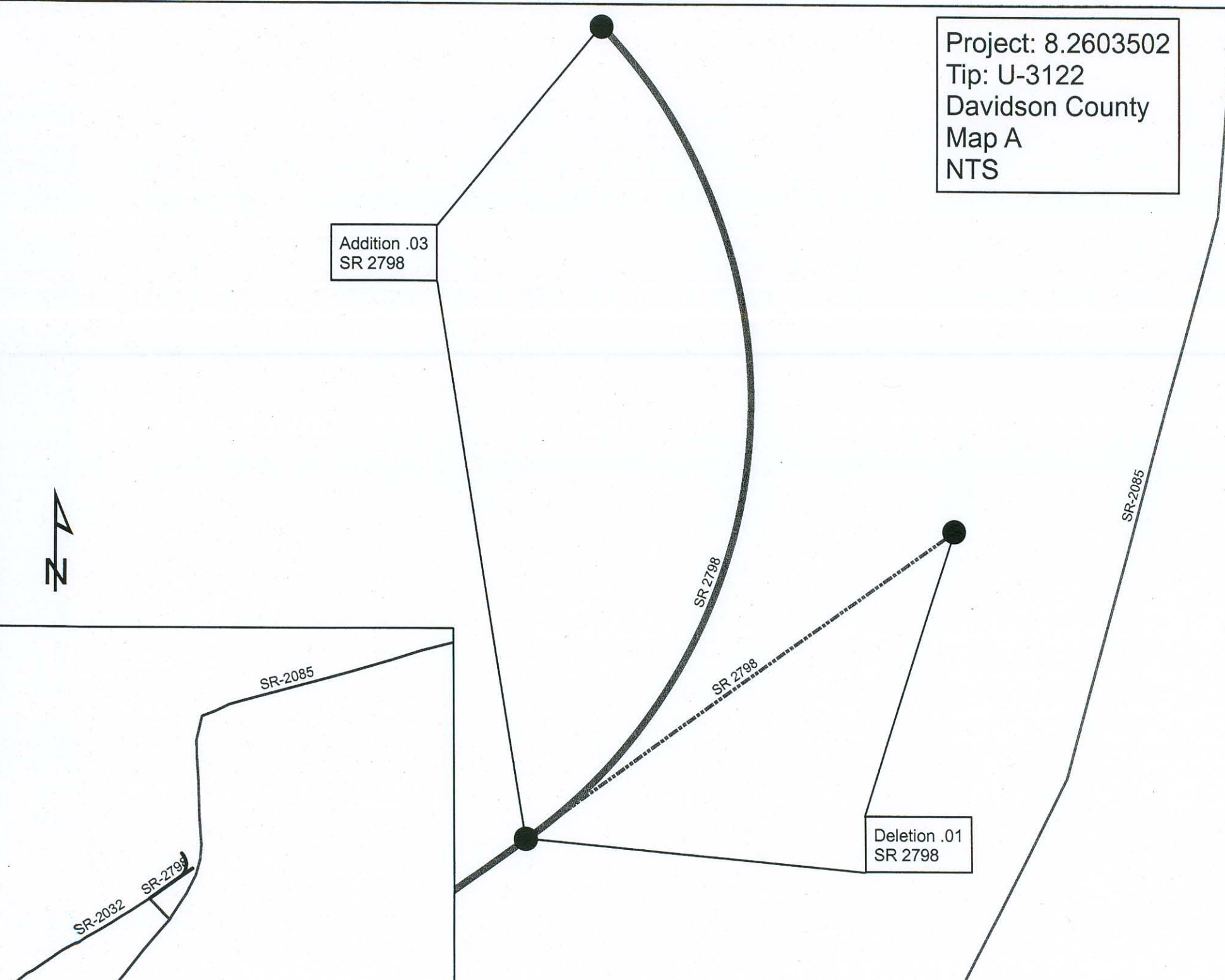
2006 ROAD SYSTEM CHANGES

TIP NUMBER	COUNTY	APPROVAL DATE	NEW NUMBER	EXISTING NUMBER	STREET NAME	LENGTH (miles)	TYPE OF CHANGE	REMARKS (See Attached Map)
8.2603502	DAVIDSON	8/4/2005		SR 2798		0.01	SYSTEM DELETION VIA PROJECT	MAP A, SEGMENT
8.2603502	DAVIDSON	8/4/2005		SR 2798		0.03	SYSTEM ADDITION VIA PROJECT	MAP A, SEGMENT
8.2603502	DAVIDSON	8/4/2005	SR 3405	SR 2085		1.04	NUMBER REASSIGNMENT VIA PROJECT	MAP B, SEGMENT
8.2603502	DAVIDSON	8/4/2005	SR 3405			0.10	SYSTEM ADDITION VIA PROJECT	MAP B, SEGMENT
8.2603502	DAVIDSON	8/4/2005		SR 2085		0.20	SYSTEM ADDITION VIA PROJECT	MAP C, SEGMENT

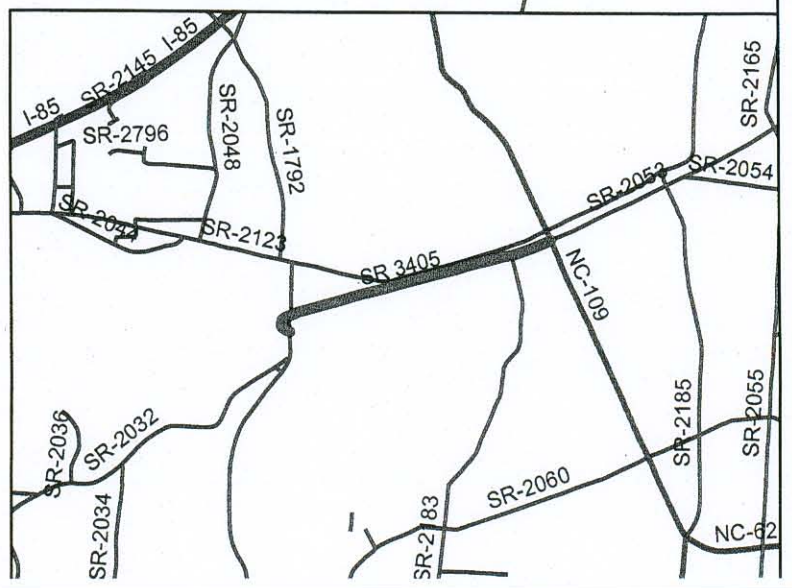
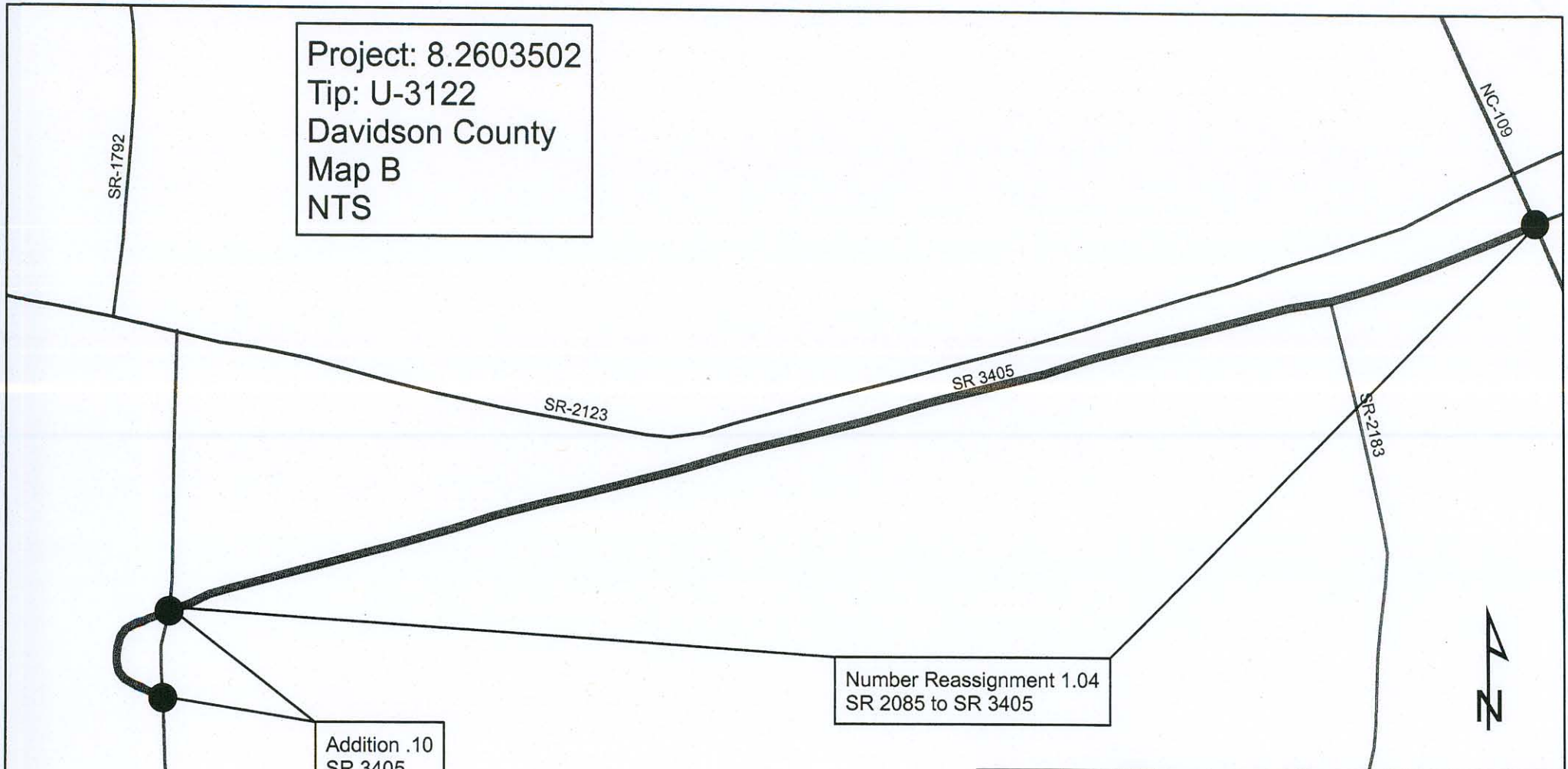
Project: 8.2603502
Tip: U-3122
Davidson County
Map A
NTS

Addition .03
SR 2798

Deletion .01
SR 2798

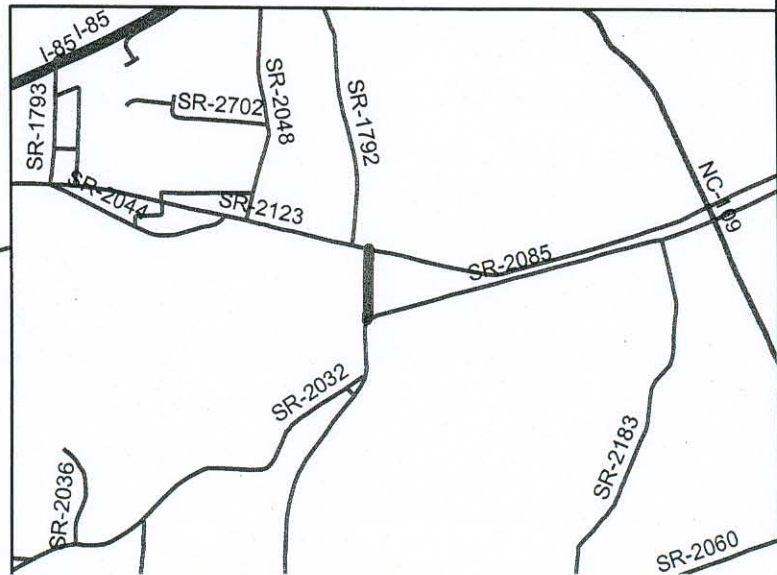


Project: 8.2603502
Tip: U-3122
Davidson County
Map B
NTS



Project: 8.2603502
Tip: U-3122
Davidson County
Map C
NTS

Addition .20
SR 2085



SR-2123

SR-1792

