



STATE OF NORTH CAROLINA
DEPARTMENT OF TRANSPORTATION

MICHAEL F EASLEY
GOVERNOR

August 22, 2005

LYNDO TIPPETT
SECRETARY

MEMORANDUM TO: Mr S Pat Ivey, PE
Division Engineer
Division 9

FROM: L C Smith
GIS Director

SUBJECT: 2005 District 1 Road Sytem Changes

The Road Inventory Section has been authorized to make the following changes to the state road system as indicated below We request that you make similar changes to the related maps and files in your Division and District offices, and install appropriate road number signs if necessary We have updated our records and county maps accordingly If our system changes do not conform to the actual conditions in the field, please return this memorandum with recommendations

Municipality	County	Approval Date
SALISBURY	ROWAN	8/4/05

Inquires about secondary road petition changes should be referred to Ron Tucker, Secondary Roads Group Supervisor at (919) 212-6080 Inquires about TIP Project changes should be referred to Tom Schroeder, Primary Highway Group Supervisor at (919) 212-6074 If you have further questions, please contact Hardee Cox, Road Inventory Manager at (919) 212-6060 Thank you for your assistance

LCS/hrc
enclosures ()

- cc. BSIP
- Bridge Maintenance
 - Pavement Management
 - Permit Unit
 - Right of Way
 - Safety Management
 - State Road Maintenance
 - Traffic Engineering
 - Traffic Surveys

MAILING ADDRESS:
NC DEPARTMENT OF TRANSPORTATION
GEOGRAPHIC INFORMATION SYSTEMS
1587 MAIL SERVICE CENTER
RALEIGH NC 27699-1587



DELIVERY ADDRESS:
3401 CARL SANDBURG CT
RALEIGH, NC 27610
PHONE (919) 212-6000
FAX (919) 212-5999

2005 ROAD SYSTEM CHANGES

MUNICIPALITY	COUNTY	APPROVAL DATE	NEW NUMBER	EXISTING NUMBER	STREET NAME	LENGTH (miles)	TYPE OF CHANGE	REMARKS (See Attached Map)
SALISBURY	ROWAN	8/4/05		SR 2255	EAST COUNCIL STREET	0.13	SYSTEM DELETION VIA MUNICIPAL AGREEMENT	MAP A, SEGMENT 1
SALISBURY	ROWAN	8/4/05		SR 1676	AUDREY LANE	0.18	SYSTEM DELETION VIA MUNICIPAL AGREEMENT	MAP A, SEGMENT 1
SALISBURY	ROWAN	8/4/05		SR 1675	RACHEL LANE	0.35	SYSTEM DELETION VIA MUNICIPAL AGREEMENT	MAP A, SEGMENT 1
SALISBURY	ROWAN	8/4/05		SR 1577	CAMLOT ROAD	0.20	SYSTEM DELETION VIA MUNICIPAL AGREEMENT	MAP A, SEGMENT 1
SALISBURY	ROWAN	8/4/05		SR 1576	LANCELOT CIRCLE	0.10	SYSTEM DELETION VIA MUNICIPAL AGREEMENT	MAP A, SEGMENT 1
SALISBURY	ROWAN	8/4/05		SR 1575	LANCELOT ROAD	0.30	SYSTEM DELETION VIA MUNICIPAL AGREEMENT	MAP A, SEGMENT 1
SALISBURY	ROWAN	8/4/05		SR 1574	CRESTVIEW CIRCLE	0.10	SYSTEM DELETION VIA MUNICIPAL AGREEMENT	MAP A, SEGMENT 1
SALISBURY	ROWAN	8/4/05		SR 1573	STONEBROOK ROAD	0.40	SYSTEM DELETION VIA MUNICIPAL AGREEMENT	MAP A, SEGMENT 1
SALISBURY	ROWAN	8/4/05		SR 1572	BAYBERRY DRIVE DANA DRIVE	0.40	SYSTEM DELETION VIA MUNICIPAL AGREEMENT	MAP A, SEGMENT 1
SALISBURY	ROWAN	8/4/05		SR 1563	GASKEY ROAD	0.51	SYSTEM DELETION VIA MUNICIPAL AGREEMENT	MAP A, SEGMENT 1
SALISBURY	ROWAN	8/4/05		SR 1517 (PORTION OF)	AIRPORT ROAD	0.72	SYSTEM DELETION VIA MUNICIPAL AGREEMENT	MAP A, SEGMENT 1

PETITION #: MUN CO: ROWAN

SR #: 1517, 1563, 1572,

1573, 1574, 1575,

1576, 1577, 1675,

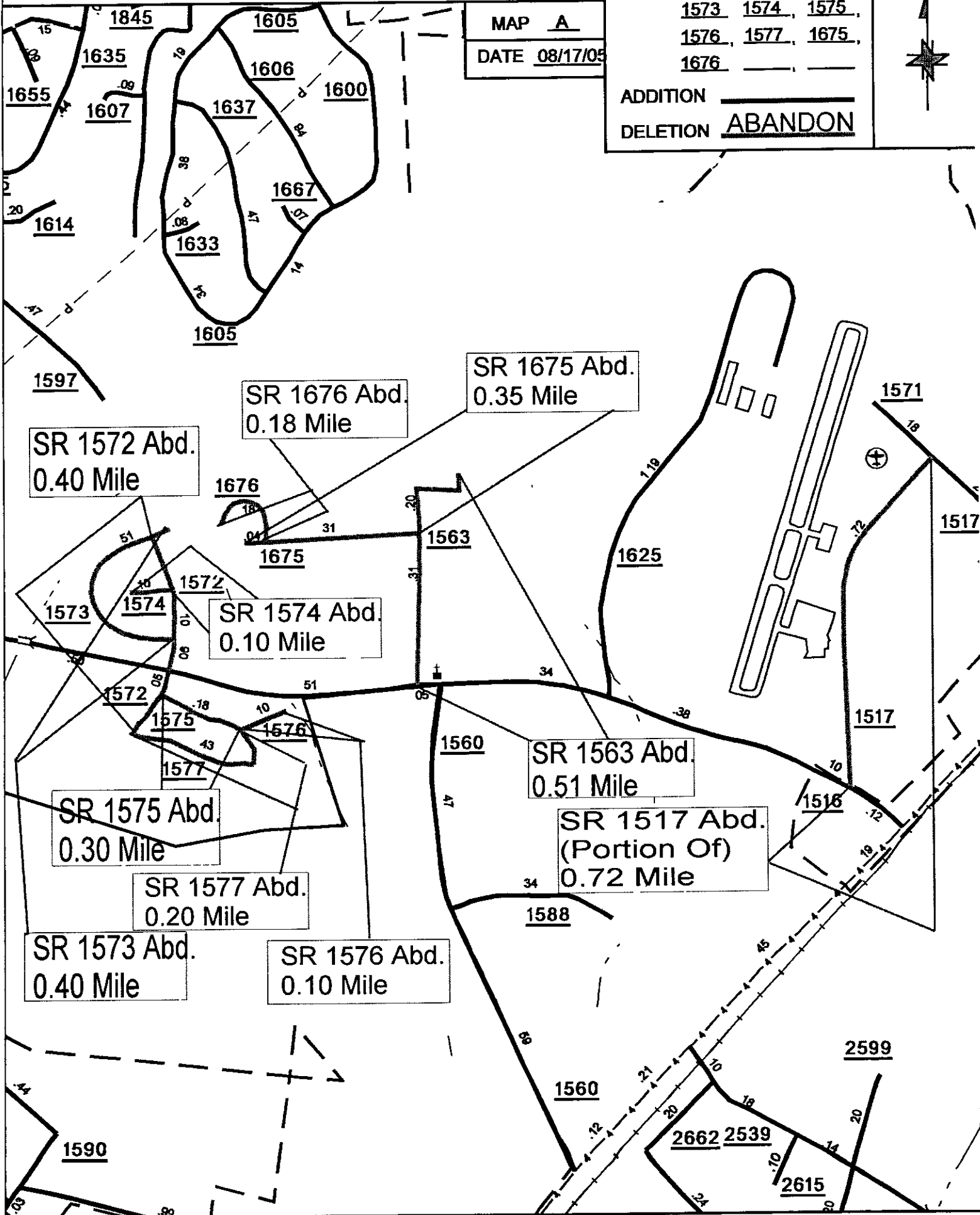
1676 _____



MAP A
DATE 08/17/05

ADDITION _____

DELETION ABANDON



SR 1572 Abd.
0.40 Mile

SR 1676 Abd.
0.18 Mile

SR 1675 Abd.
0.35 Mile

SR 1574 Abd.
0.10 Mile

SR 1563 Abd.
0.51 Mile

SR 1517 Abd.
(Portion Of)
0.72 Mile

SR 1575 Abd.
0.30 Mile

SR 1577 Abd.
0.20 Mile

SR 1573 Abd.
0.40 Mile

SR 1576 Abd.
0.10 Mile

PETITION #: MUN. CO ROWAN

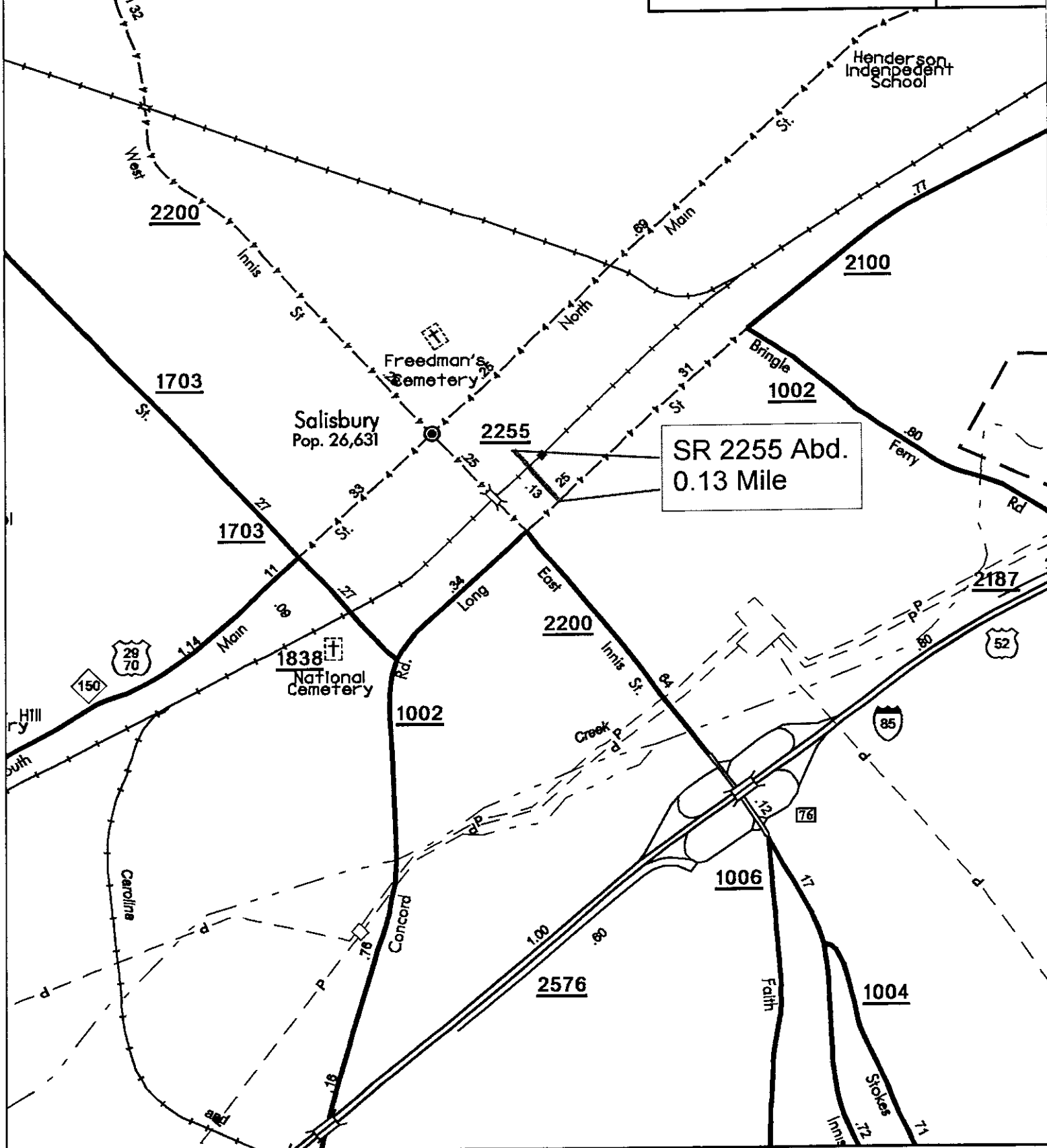
SR #: 2255

Rowan Regional Medical Center

MAP B

DATE 08/17/05

ADDITION _____
DELETION ABANDON



SR 2255 Abd.
0.13 Mile