



STATE OF NORTH CAROLINA  
DEPARTMENT OF TRANSPORTATION

MICHAEL F. EASLEY  
GOVERNOR

November 20, 2007

LYNDO TIPPETT  
SECRETARY

**MEMORANDUM TO:** Mr. H. Allen Pope, PE  
Division Engineer  
Division 3

**FROM:** Information, Mapping, and Graphics Unit

**SUBJECT:** 2007 District 3 Road System Changes

The Road Inventory Information Section has been authorized to make the following changes to the state road system as indicated below. We request that you make similar changes to the related maps and files in your Division and District offices, and install appropriate road number signs if necessary. We have updated our records and county maps accordingly. If our system changes do not conform to the actual conditions in the field, please return this memorandum with recommendations.

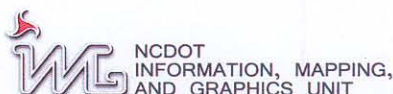
TIP Number	County	Approval Date
R-2633 CB	NEW HANOVER	8/22/2005

Inquires about changes should be referred to one of the following: Ron Tucker at (919) 212-6080 or Tom Schroder at (919) 212-6090. If you have further questions, please contact Hardee Cox, Road Inventory Information Section Manager at (919) 212-6060. Thank you for your assistance.

HRC  
enclosures ( )

cc: BSIP  
Bridge Maintenance  
Division Right of Way  
GIS  
Pavement Management  
Permit Unit  
State Road Maintenance  
Traffic Engineering  
Traffic Surveys

**MAILING ADDRESS:**  
NC DEPARTMENT OF TRANSPORTATION  
INFORMATION, MAPPING AND GRAPHICS UNIT  
1587 MAIL SERVICE CENTER  
RALEIGH NC 27699-1587



**LOCATION:**  
3401 CARL SANDBURG CT.  
RALEIGH, NC 27610

# 2007 ROAD SYSTEM CHANGES

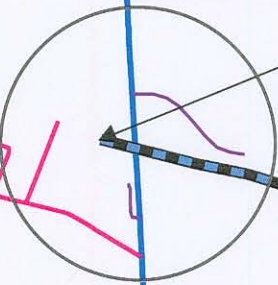
TIP NUMBER	COUNTY	APPROVAL DATE	NEW NUMBER	EXISTING NUMBER	STREET NAME	LENGTH (miles)	TYPE OF CHANGE	REMARKS (See Attached Map)
R-2633 CB	NEW HANOVER	8/22/2005		US 17		3.54	SYSTEM ADDITION VIA PROJECT	MAP A, SEGMENT 1
R-2633 CB	NEW HANOVER	8/22/2005	SR 2840		NORWOOD BELLWOOD DRIVE	0.39	SYSTEM ADDITION VIA PROJECT	MAP B, SEGMENT 1
R-2633 CB	NEW HANOVER	8/22/2005	SR 2842			0.10	SYSTEM ADDITION VIA PROJECT	MAP C, SEGMENT 1
R-2633 CB	NEW HANOVER	8/22/2005		SR 2111	RAVENWOOD DRIVE	0.03	SYSTEM DELETION VIA PROJECT	MAP C, SEGMENT 2
R-2633 CB	NEW HANOVER	8/22/2005	SR 2841		SERVICE ROAD	0.13	SYSTEM ADDITION VIA PROJECT	MAP A, SEGMENT 3

Legend:

- Addition
- ✗ Deletion
- Reassignment



**Addition 3.54  
US 17  
Segment 1**

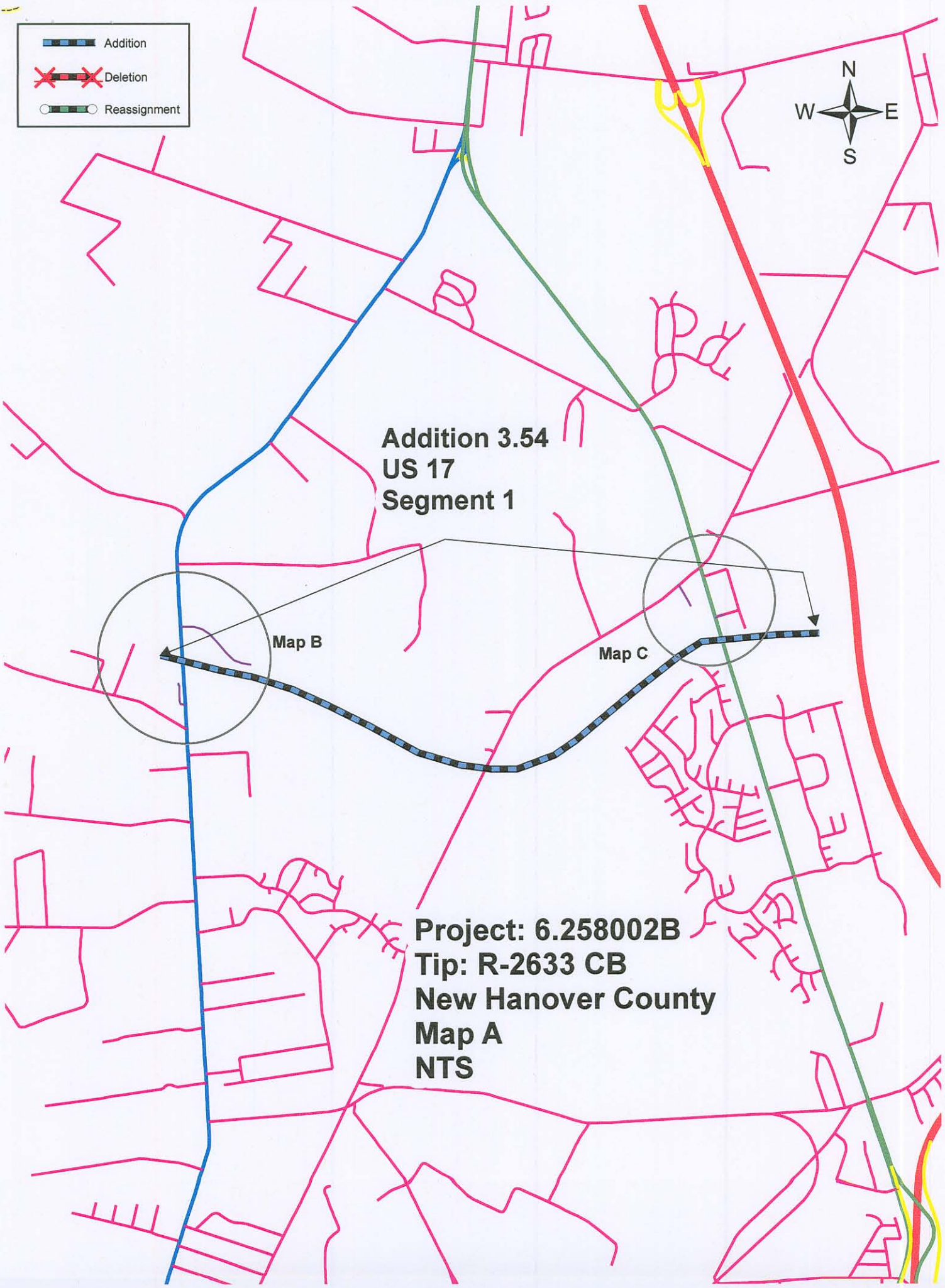


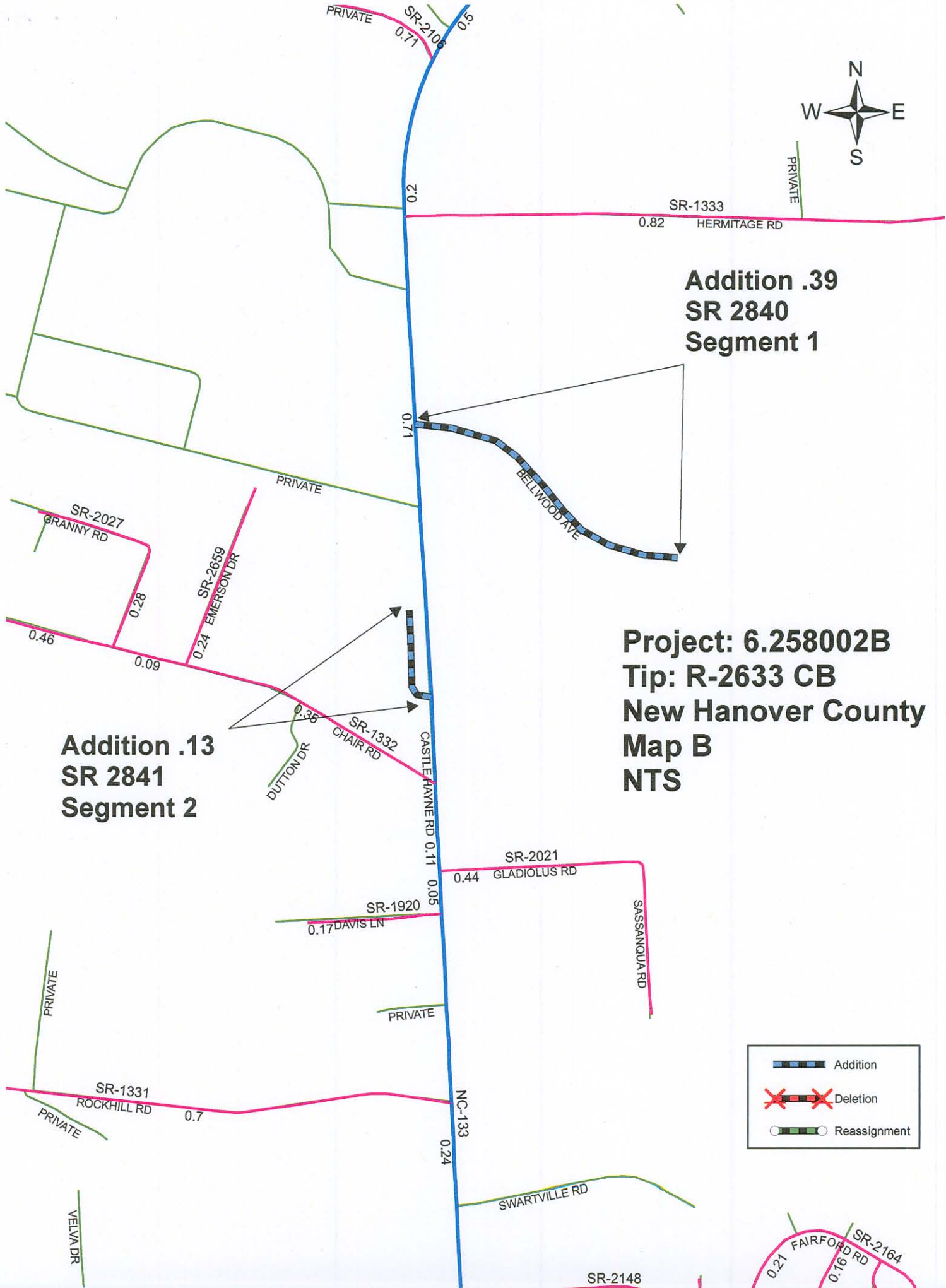
Map B



Map C

**Project: 6.258002B  
Tip: R-2633 CB  
New Hanover County  
Map A  
NTS**





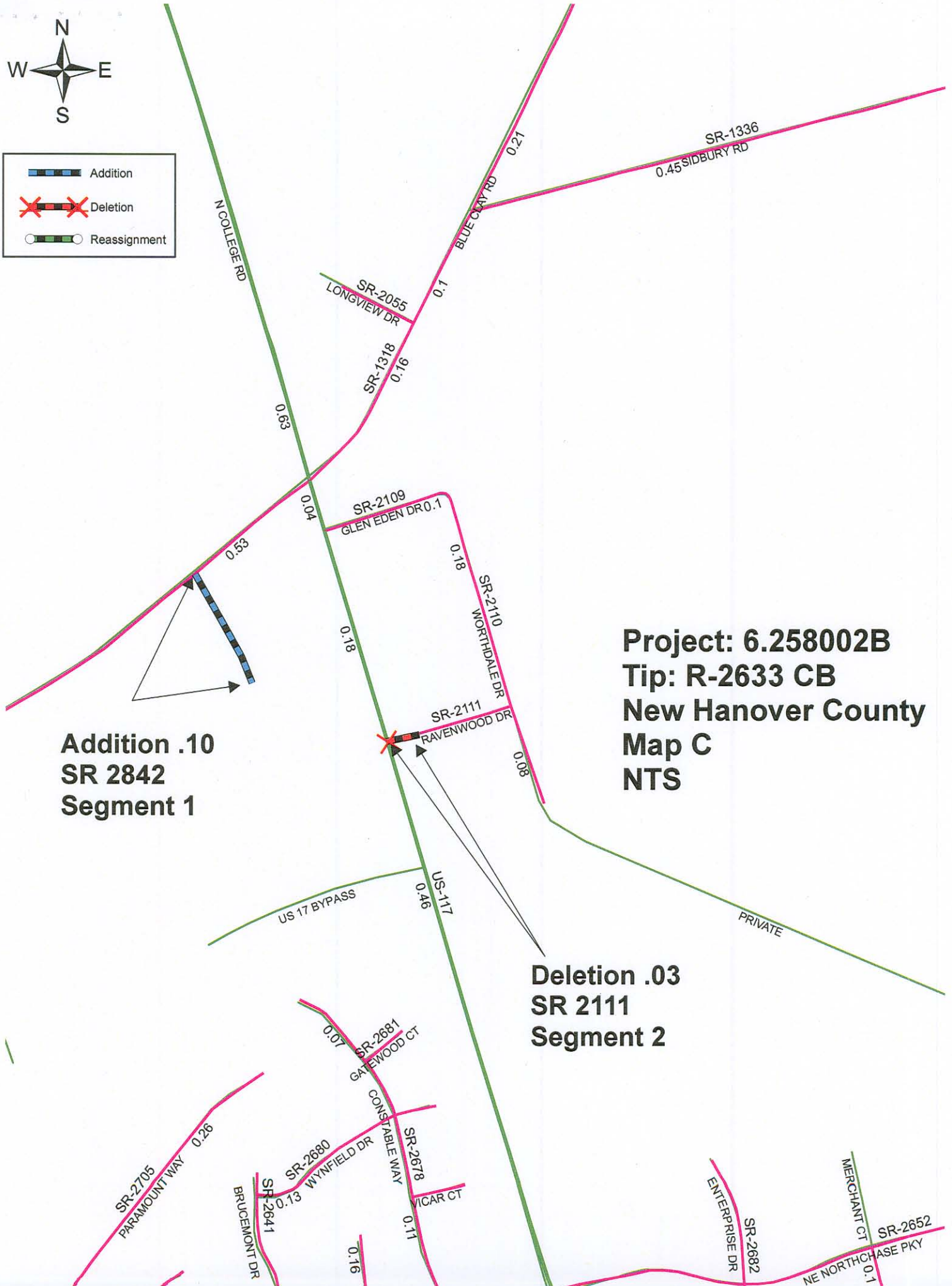
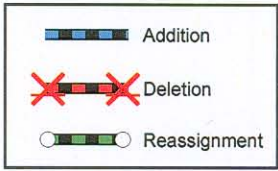
**Addition .39  
SR 2840  
Segment 1**

**Addition .13  
SR 2841  
Segment 2**

**Project: 6.258002B  
Tip: R-2633 CB  
New Hanover County  
Map B  
NTS**

	Addition
	Deletion
	Reassignment





**Addition .10  
SR 2842  
Segment 1**

**Project: 6.258002B  
Tip: R-2633 CB  
New Hanover County  
Map C  
NTS**

**Deletion .03  
SR 2111  
Segment 2**