



STATE OF NORTH CAROLINA
DEPARTMENT OF TRANSPORTATION

MICHAEL F. EASLEY
GOVERNOR

Tuesday, August 16, 2005

LYNDO TIPPETT
SECRETARY

MEMORANDUM TO: Mr. Jon G. Nance, PE
Division Engineer
Division 5

FROM: L.C. Smith
GIS Director

SUBJECT: 2005 District 1 Road Sytem Changes

The Road Inventory Section has been authorized to make the following changes to the state road system as indicated below. We request that you make similar changes to the related maps and files in your Division and District offices, and install appropriate road number signs if necessary. We have updated our records and county maps accordingly. If our system changes do not conform to the actual conditions in the field, please return this memorandum with recommendations.

Municipality	County	Approval Date
RALEIGH	WAKE	6/7/05

Inquires about secondary road petition changes should be referred to Ron Tucker, Secondary Roads Group Supervisor at (919) 212-6080. Inquires about TIP Project changes should be referred to Tom Schroeder, Primary Highway Group Supervisor at (919) 212-6074. If you have further questions, please contact Hardee Cox, Road Inventory Manager at (919) 212-6060. Thank you for your assistance.

LCS/hrc
enclosures ()

- cc: BSIP
Bridge Maintenance
Pavement Management
Permit Unit
Right of Way
Safety Management
State Road Maintenance
Traffic Engineering
Traffic Surveys

MAILING ADDRESS:
NC DEPARTMENT OF TRANSPORTATION
GEOGRAPHIC INFORMATION SYSTEMS
1587 MAIL SERVICE CENTER
RALEIGH NC 27699-1587



www.ncdot.org/statewide/planning/gis

DELIVERY ADDRESS:
3401 CARL SANDBURG CT.
RALEIGH, NC 27610
PHONE: (919) 212-6000
FAX: (919) 212-5999

2005 ROAD SYSTEM CHANGES

MUNICIPALITY	COUNTY	APPROVAL DATE	NEW NUMBER	EXISTING NUMBER	STREET NAME	LENGTH (miles)	TYPE OF CHANGE	REMARKS (See Attached Map)
RALEIGH	WAKE	6/7/05		SR 2683	RUSH STREET	0.94	SYSTEM DELETION VIA MUNICIPAL AGREEMENT	MAP A, SEGMENT 1
RALEIGH	WAKE	6/7/05		SR 2147	PEDEN STEEL ACCESS RD.	0.14	SYSTEM DELETION VIA MUNICIPAL AGREEMENT	MAP A, SEGMENT 2
RALEIGH	WAKE	6/7/05		SR 2909	RATCHFORD ROAD	0.20	SYSTEM DELETION VIA MUNICIPAL AGREEMENT	MAP A, SEGMENT 3
RALEIGH	WAKE	6/7/05		SR 2909	RATCHFORD ROAD	0.12	SYSTEM DELETION VIA MUNICIPAL AGREEMENT	MAP A, SEGMENT 4
RALEIGH	WAKE	6/7/05		SR 2968	FENTON STREET	0.09	SYSTEM DELETION VIA MUNICIPAL AGREEMENT	MAP A, SEGMENT 5
RALEIGH	WAKE	6/7/05		SR 2034	NEW HOPE CHURCH ROAD	0.50	SYSTEM DELETION VIA MUNICIPAL AGREEMENT	MAP A, SEGMENT 6
RALEIGH	WAKE	6/7/05		SR 2034	NEW HOPE CHURCH ROAD	0.26	SYSTEM DELETION VIA MUNICIPAL AGREEMENT	MAP A, SEGMENT 7
RALEIGH	WAKE	6/7/05		SR 2034	NEW HOPE CHURCH ROAD	0.05	SYSTEM DELETION VIA MUNICIPAL AGREEMENT	MAP A, SEGMENT 8
RALEIGH	WAKE	6/7/05		SR 2034	NEW HOPE CHURCH ROAD	0.07	SYSTEM DELETION VIA MUNICIPAL AGREEMENT	MAP A, SEGMENT 9
RALEIGH	WAKE	6/7/05		SR 2034	NEW HOPE CHURCH ROAD	0.25	SYSTEM DELETION VIA MUNICIPAL AGREEMENT	MAP A, SEGMENT 10
RALEIGH	WAKE	6/7/05		SR 2034	NEW HOPE CHURCH ROAD	0.16	SYSTEM DELETION VIA MUNICIPAL AGREEMENT	MAP A, SEGMENT 11
RALEIGH	WAKE	6/7/05		SR 2034	NEW HOPE CHURCH ROAD	0.05	SYSTEM DELETION VIA MUNICIPAL AGREEMENT	MAP A, SEGMENT 12
RALEIGH	WAKE	6/7/05		SR 1676	LAKE BOONE TRAIL	0.32	SYSTEM DELETION VIA MUNICIPAL AGREEMENT	MAP A, SEGMENT 13

MUNICIPALITY	COUNTY	APPROVAL DATE	NEW NUMBER	EXISTING NUMBER	STREET NAME	LENGTH (miles)	TYPE OF CHANGE	REMARKS (See Attached Map)
RALEIGH	WAKE	6/7/05		SR 1676	LAKE BOONE TRAIL	0.49	SYSTEM DELETION VIA MUNICIPAL AGREEMENT	MAP A, SEGMENT 14
RALEIGH	WAKE	6/7/05		SR 1676	LAKE BOONE TRAIL	0.16	SYSTEM DELETION VIA MUNICIPAL AGREEMENT	MAP A, SEGMENT 15
RALEIGH	WAKE	6/7/05		SR 2206	TRAWICK ROAD	0.09	SYSTEM DELETION VIA MUNICIPAL AGREEMENT	MAP A, SEGMENT 16
RALEIGH	WAKE	6/7/05		SR 2206	TRAWICK ROAD	0.20	SYSTEM DELETION VIA MUNICIPAL AGREEMENT	MAP A, SEGMENT 17
RALEIGH	WAKE	6/7/05		SR 2206	TRAWICK ROAD	0.47	SYSTEM DELETION VIA MUNICIPAL AGREEMENT	MAP A, SEGMENT 18
RALEIGH	WAKE	6/7/05		SR 2203	FOREST DRIVE	0.50	SYSTEM DELETION VIA MUNICIPAL AGREEMENT	MAP A, SEGMENT 19
RALEIGH	WAKE	6/7/05		SR 2277	YONKERS ROAD	0.46	SYSTEM DELETION VIA MUNICIPAL AGREEMENT	MAP A, SEGMENT 20
RALEIGH	WAKE	6/7/05		SR 2277	YONKERS ROAD	1.40	SYSTEM DELETION VIA MUNICIPAL AGREEMENT	MAP A, SEGMENT 21
RALEIGH	WAKE	6/7/05		SR 1733	OBERLIN ROAD	0.28	SYSTEM DELETION VIA MUNICIPAL AGREEMENT	MAP A, SEGMENT 22
RALEIGH	WAKE	6/7/05		SR 1733	OBERLIN ROAD	0.51	SYSTEM DELETION VIA MUNICIPAL AGREEMENT	MAP A, SEGMENT 23
RALEIGH	WAKE	6/7/05		SR 1009	SOUTH SAUNDERS STREET	0.06	SYSTEM DELETION VIA MUNICIPAL AGREEMENT	MAP A, SEGMENT 24
RALEIGH	WAKE	6/7/05		SR 1009	SOUTH SAUNDERS STREET	0.10	SYSTEM DELETION VIA MUNICIPAL AGREEMENT	MAP A, SEGMENT 25
RALEIGH	WAKE	6/7/05		SR 1009	SOUTH SAUNDERS STREET	0.11	SYSTEM DELETION VIA MUNICIPAL AGREEMENT	MAP A, SEGMENT 26
RALEIGH	WAKE	6/7/05		SR 1009	SOUTH SAUNDERS	0.47	SYSTEM DELETION VIA MUNICIPAL AGREEMENT	MAP A, SEGMENT 27

MUNICIPALITY	COUNTY	APPROVAL DATE	NEW NUMBER	EXISTING NUMBER	STREET NAME	LENGTH (miles)	TYPE OF CHANGE	REMARKS (See Attached Map)
RALEIGH	WAKE	6/7/05		SR 1009	SOUTH SAUNDERS STREET	0.10	SYSTEM DELETION VIA MUNICIPAL AGREEMENT	MAP A, SEGMENT 28
RALEIGH	WAKE	6/7/05		SR 1009	SOUTH SAUNDERS STREET	0.37	SYSTEM DELETION VIA MUNICIPAL AGREEMENT	MAP A, SEGMENT 29
RALEIGH	WAKE	6/7/05		SR 3923	OLD SOUTH SAUNDERS ST.	0.23	SYSTEM DELETION VIA MUNICIPAL AGREEMENT	MAP A, SEGMENT 30
RALEIGH	WAKE	6/7/05		SR 3923	OLD SOUTH SAUNDERS ST.	0.05	SYSTEM DELETION VIA MUNICIPAL AGREEMENT	MAP A, SEGMENT 31
RALEIGH	WAKE	6/7/05		SR 2542	TARBORO STREET	0.47	SYSTEM DELETION VIA MUNICIPAL AGREEMENT	MAP A, SEGMENT 31
RALEIGH	WAKE	6/7/05		SR 2542	TARBORO STREET	0.12	SYSTEM DELETION VIA MUNICIPAL AGREEMENT	MAP A, SEGMENT 33
RALEIGH	WAKE	6/7/05		SR 2542	ROCK QUARRY ROAD	0.56	SYSTEM DELETION VIA MUNICIPAL AGREEMENT	MAP A, SEGMENT 34
RALEIGH	WAKE	6/7/05		SR 2596	LENOIR STREET	0.42	SYSTEM DELETION VIA MUNICIPAL AGREEMENT	MAP A, SEGMENT 35
RALEIGH	WAKE	6/7/05		SR 2596	LENOIR STREET	0.20	SYSTEM DELETION VIA MUNICIPAL AGREEMENT	MAP A, SEGMENT 36
RALEIGH	WAKE	6/7/05		SR 2596	LENOIR STREET	0.09	SYSTEM DELETION VIA MUNICIPAL AGREEMENT	MAP A, SEGMENT 37
RALEIGH	WAKE	6/7/05		SR 4687	SOUTH STREET	0.09	SYSTEM DELETION VIA MUNICIPAL AGREEMENT	MAP A, SEGMENT 38
RALEIGH	WAKE	6/7/05		SR 4687	SOUTH STREET	0.45	SYSTEM DELETION VIA MUNICIPAL AGREEMENT	MAP A, SEGMENT 39
RALEIGH	WAKE	6/7/05		SR 4687	SOUTH STREET	0.18	SYSTEM DELETION VIA MUNICIPAL AGREEMENT	MAP A, SEGMENT 40
RALEIGH	WAKE	6/7/05		SR 3042	BERYL ROAD	0.40	SYSTEM DELETION VIA MUNICIPAL AGREEMENT	MAP A, SEGMENT 41

MUNICIPALITY	COUNTY	APPROVAL DATE	NEW NUMBER	EXISTING NUMBER	STREET NAME	LENGTH (miles)	TYPE OF CHANGE	REMARKS (See Attached Map)
RALEIGH	WAKE	6/7/05		SR 1315	BUCK JONES ROAD	0.14	SYSTEM DELETION VIA MUNICIPAL AGREEMENT	MAP A, SEGMENT 42
RALEIGH	WAKE	6/7/05		SR 1315	BUCK JONES ROAD	1.06	SYSTEM DELETION VIA MUNICIPAL AGREEMENT	MAP A, SEGMENT 43
RALEIGH	WAKE	6/7/05		SR 1315	BUCK JONES ROAD	0.03	SYSTEM DELETION VIA MUNICIPAL AGREEMENT	MAP A, SEGMENT 44
RALEIGH	WAKE	6/7/05		SR 1428	SOUTH SAUNDERS STREET	0.19	SYSTEM DELETION VIA MUNICIPAL AGREEMENT	MAP A, SEGMENT 45
RALEIGH	WAKE	6/7/05		SR 1428	SOUTH SAUNDERS STREET	0.13	SYSTEM DELETION VIA MUNICIPAL AGREEMENT	MAP A, SEGMENT 46
RALEIGH	WAKE	6/7/05		SR 1004	GARNER ROAD	0.06	SYSTEM DELETION VIA MUNICIPAL AGREEMENT	MAP A, SEGMENT 47
RALEIGH	WAKE	6/7/05		SR 1004	GARNER ROAD	0.25	SYSTEM DELETION VIA MUNICIPAL AGREEMENT	MAP A, SEGMENT 48
RALEIGH	WAKE	6/7/05		SR 1004	GARNER ROAD	0.95	SYSTEM DELETION VIA MUNICIPAL AGREEMENT	MAP A, SEGMENT 49
RALEIGH	WAKE	6/7/05		SR 1004	GARNER ROAD	0.12	SYSTEM DELETION VIA MUNICIPAL AGREEMENT	MAP A, SEGMENT 50
RALEIGH	WAKE	6/7/05		SR 1004	GARNER ROAD	0.59	SYSTEM DELETION VIA MUNICIPAL AGREEMENT	MAP A, SEGMENT 51

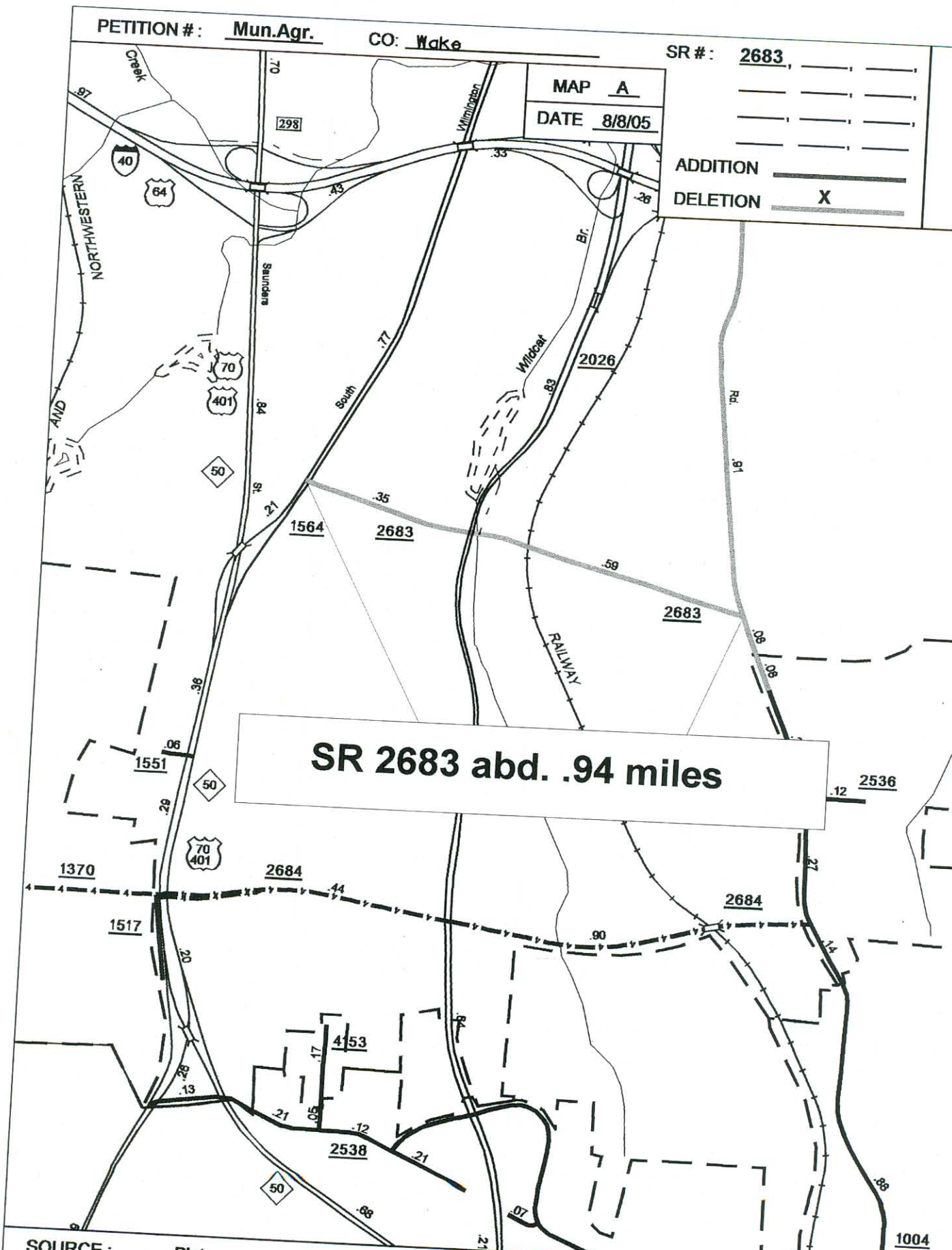
PETITION #: Mun.Agr.

CO: Wake

SR #: 2683

MAP A
DATE 8/8/05

ADDITION _____
DELETION X



SR 2683 abd. .94 miles

SOURCE: Plat

SHEET: 3 OF 9

NAME: RLN

SCALE: 4:1

PETITION #: Mun. Agr.

CO: Wake

SR #: 2542, _____, _____

MAP A

DATE 8/8/05

ADDITION _____

DELETION X



Mary Phillips High Sch.

Longview Sch.

Enloe High Sch.

2921

2298

.86

St.

.33

Ave.

2.20

.71

Rd.

South

Tarboro

.14

2542

2911

SR 2542 abd. 1.15 miles

Hunter Elem. Sch.

Ligon Middle Sch.

Poe Elem. Sch.

1.15

Rock

Pool

Carnage Middle Sch.

2542

300

Creek

Walnut

64

40

.24

Fuller Elem. Sch.

1.13

.12

Rd.

.37

SOURCE: Plat

SHEET: 3 OF 9

NAME: RLN

SCALE: 4:1

Man. Agr.

CO: Wake

SR #: 3042

MAP A

DATE 8/8/05

ADDITION

DELETION

Mt. Vernon Redirection Sch.

1658

Westover

SOUTHERN

3042

1664

SR 3042 abd. .40 miles



1012

Combs Elem. Sch.

Athens High Sch.

1321

Avert

ON

1.92

Plat

SHEET

PETITION #: Mun. Agr.

CO: Wake

SR #: 2909

MAP A

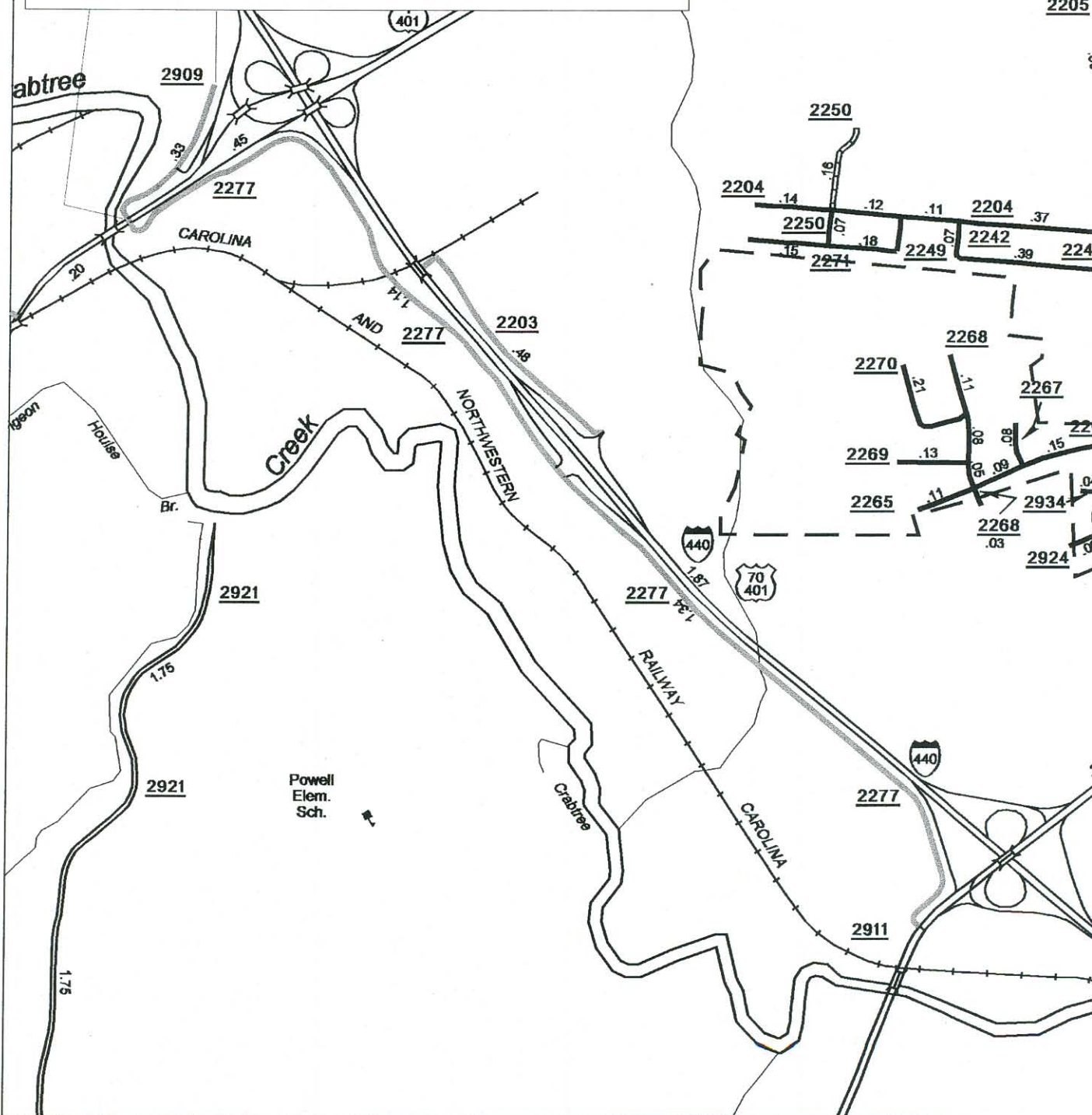
DATE 6/17/05

ADDITION _____

DELETION X



SR 2909 abd. .32 miles



SOURCE: Plat

SHEET: 3 OF 9

NAME: RLN

SCALE: 4:1

PETITION #: Mun. Agr.

CO: Wake

SR #: 2203

MAP A

DATE 6/17/05

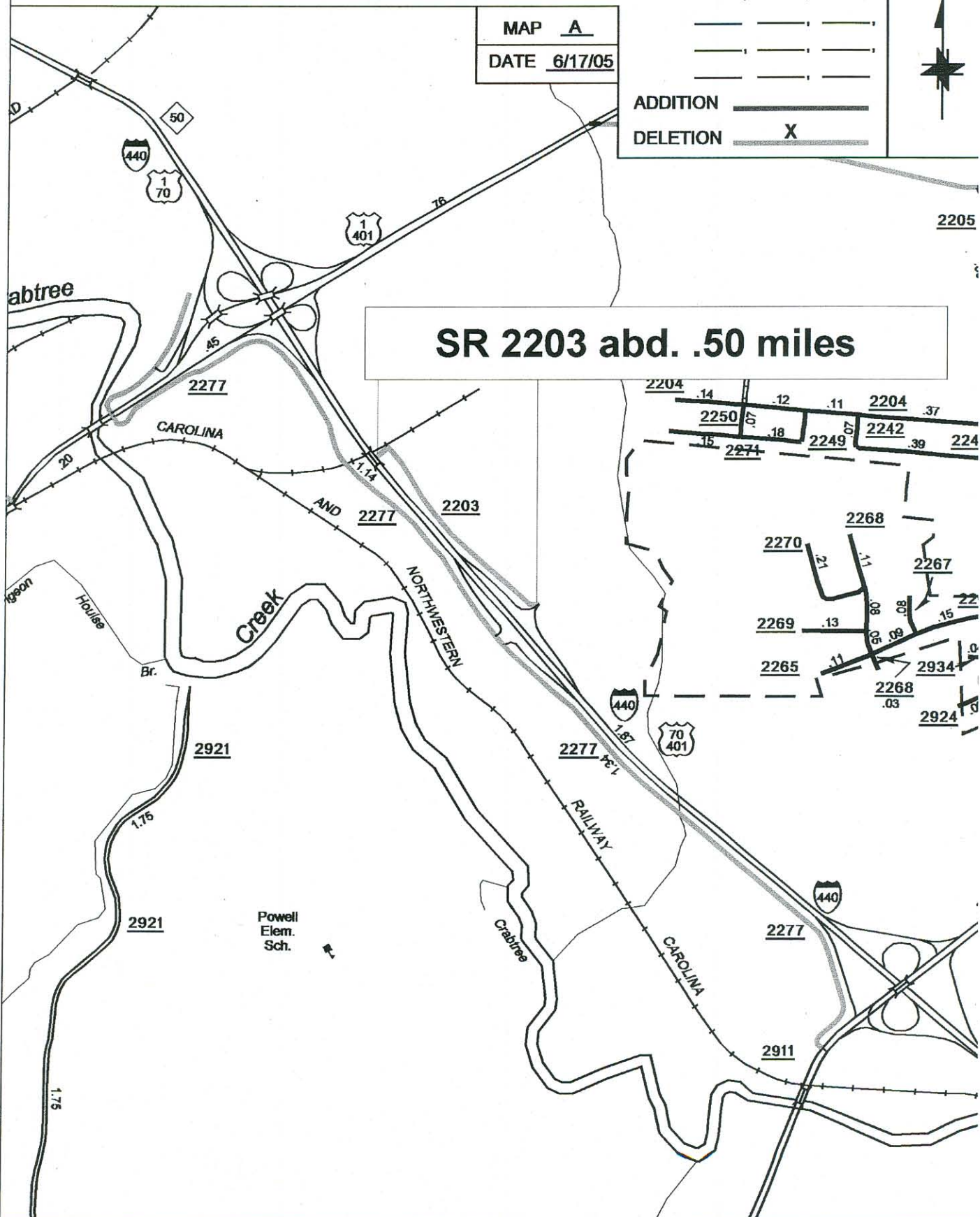
ADDITION _____

DELETION X



2205

SR 2203 abd. .50 miles



SOURCE: Plat

SHEET: 3 OF 9

NAME: RLN

SCALE: 4:1

N #: Mun.Agr. CO: Wake

SR #: 1004, 2683

ADDITION _____
DELETION _____ X

MAP A
DATE 8/8/05

70
401

Washington
Elem.
Sch.

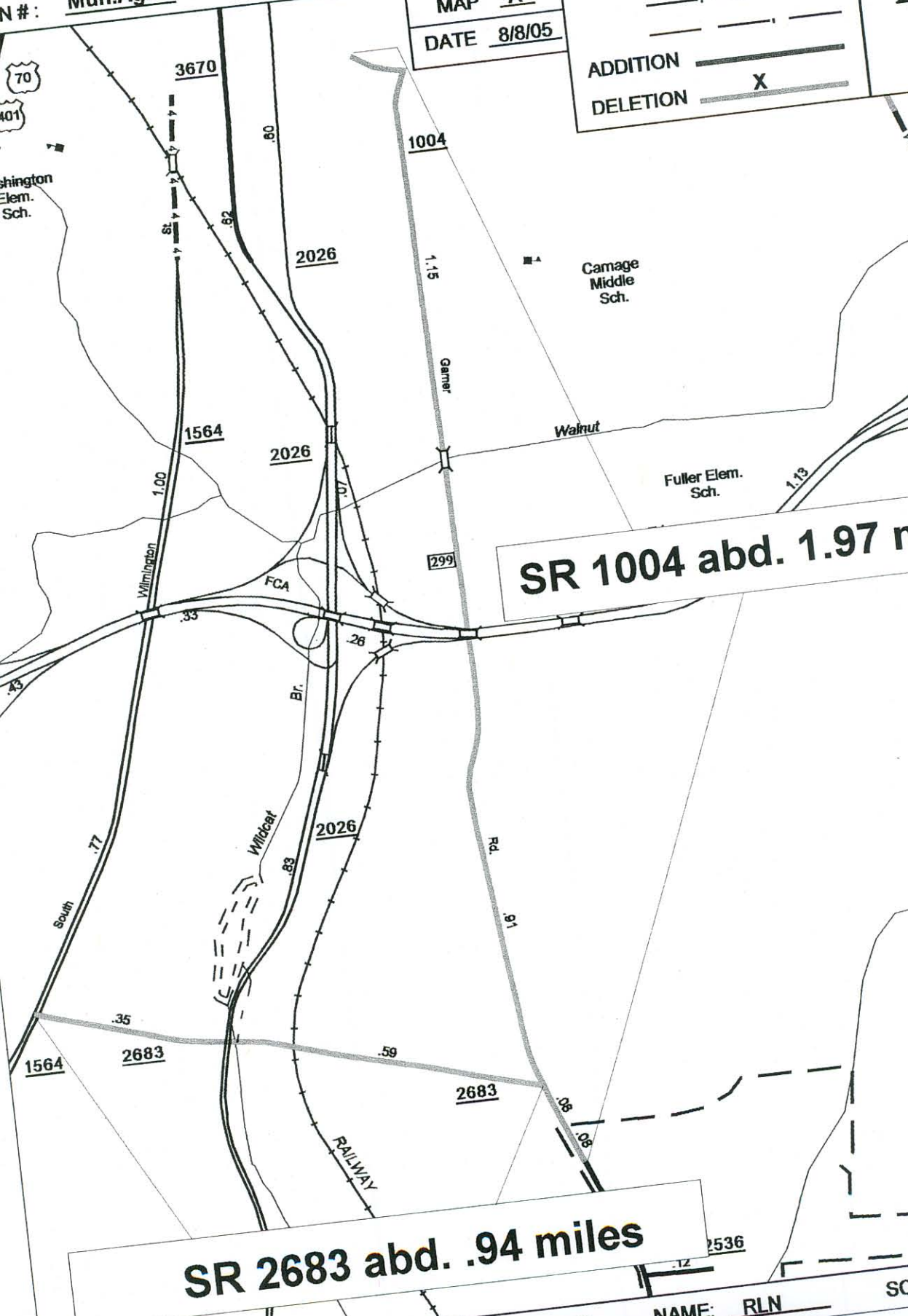
Camage
Middle
Sch.

Fuller Elem.
Sch.

SR 1004 abd. 1.97 m

SR 2683 abd. .94 miles

NAME: RLN



PETITION #: Mun. Agr.

CO: Wake

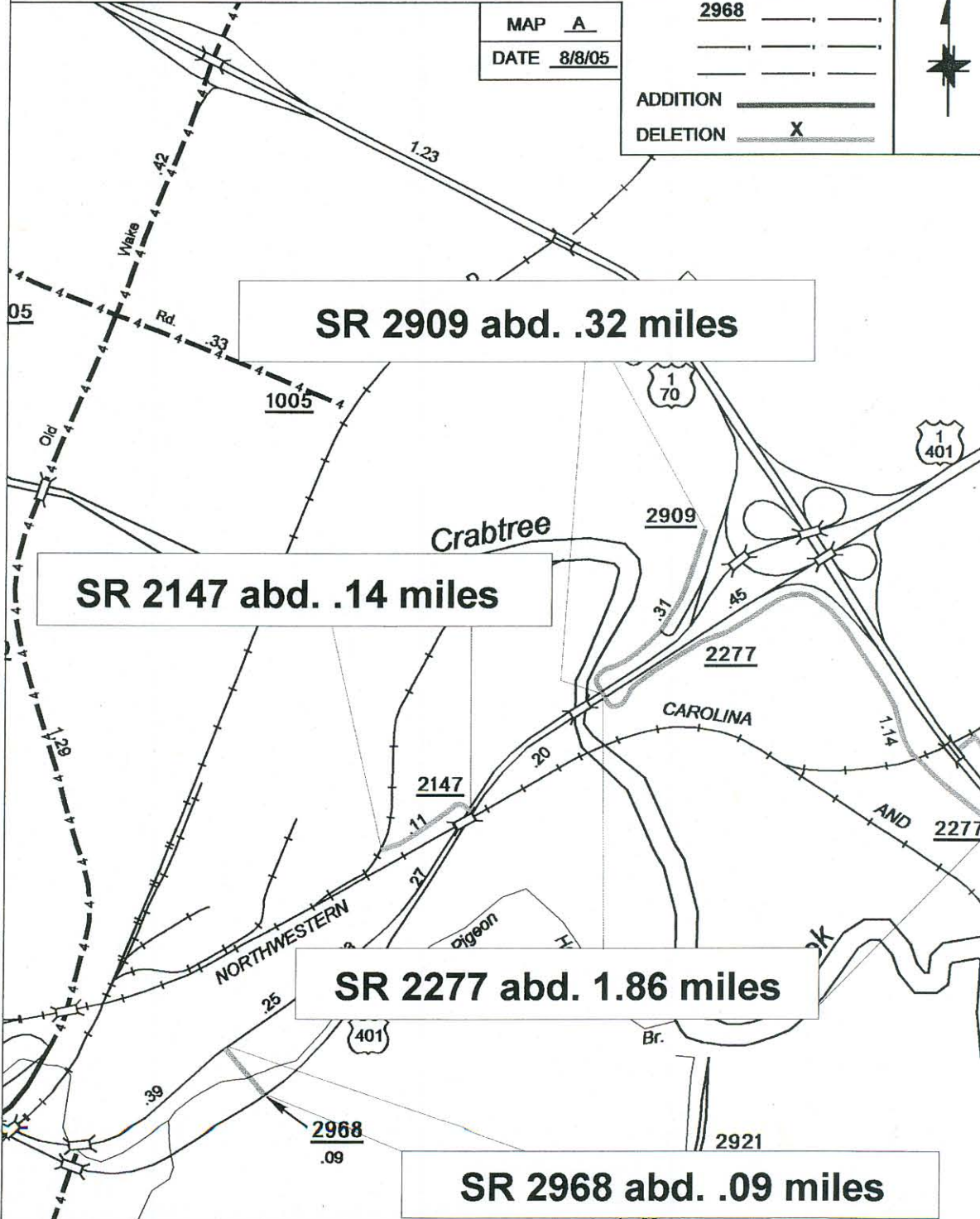
SR #: 2909, 2277, 2147,

MAP A

DATE 8/8/05

ADDITION _____

DELETION X



SR 2909 abd. .32 miles

SR 2147 abd. .14 miles

SR 2277 abd. 1.86 miles

SR 2968 abd. .09 miles

SOURCE: Plat

SHEET: 2 OF 9

NAME: RLN

SCALE: 4:1

PETITION #: Mun. Agr.

CO: Wake

SR #: 2034, _____, _____

MAP A

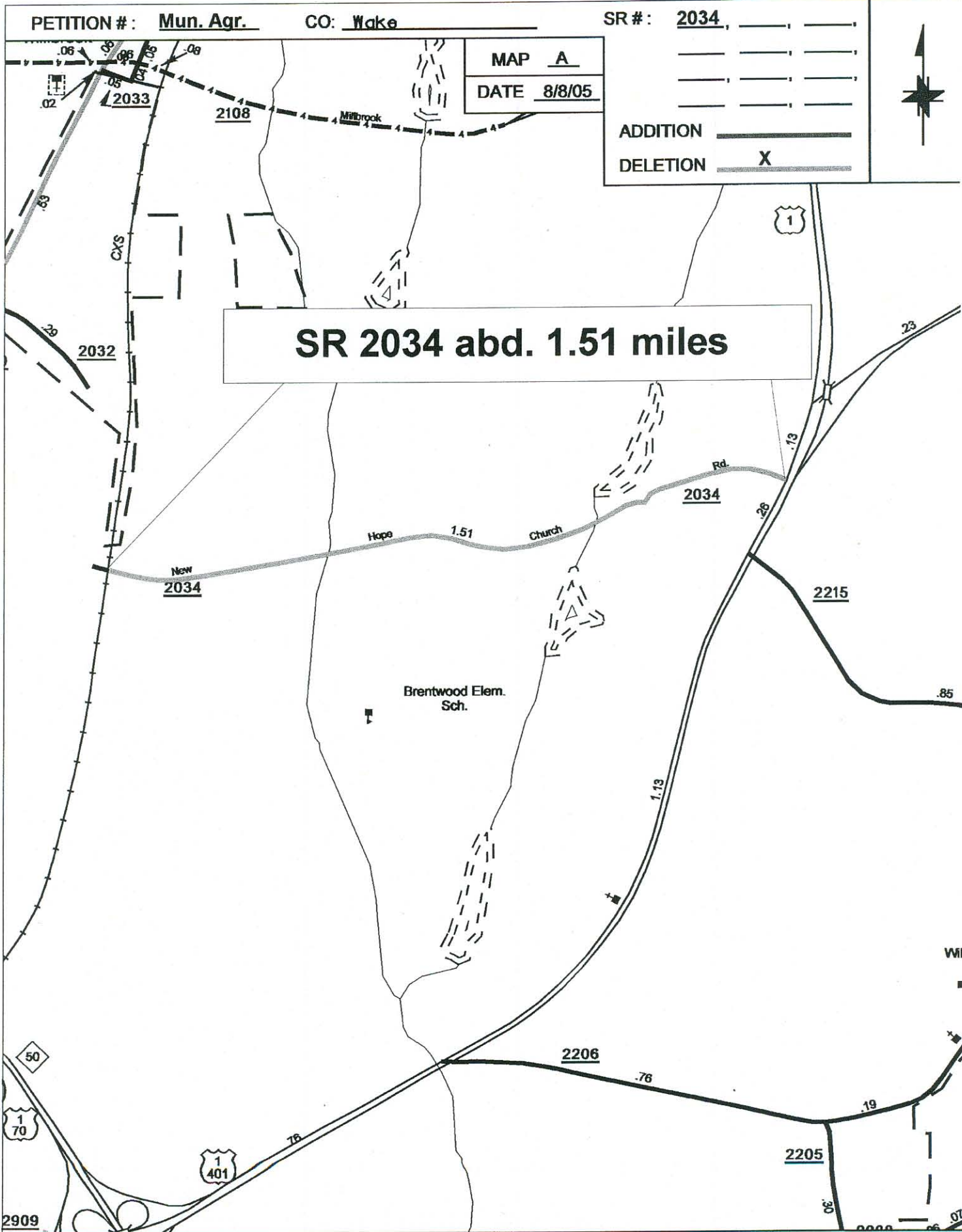
DATE 8/8/05

ADDITION _____

DELETION X



SR 2034 abd. 1.51 miles



SOURCE: Plat

SHEET: 2 OF 9

NAME: RLN

SCALE: 4:1

PETITION #: Mun. Agr.

CO: Wake

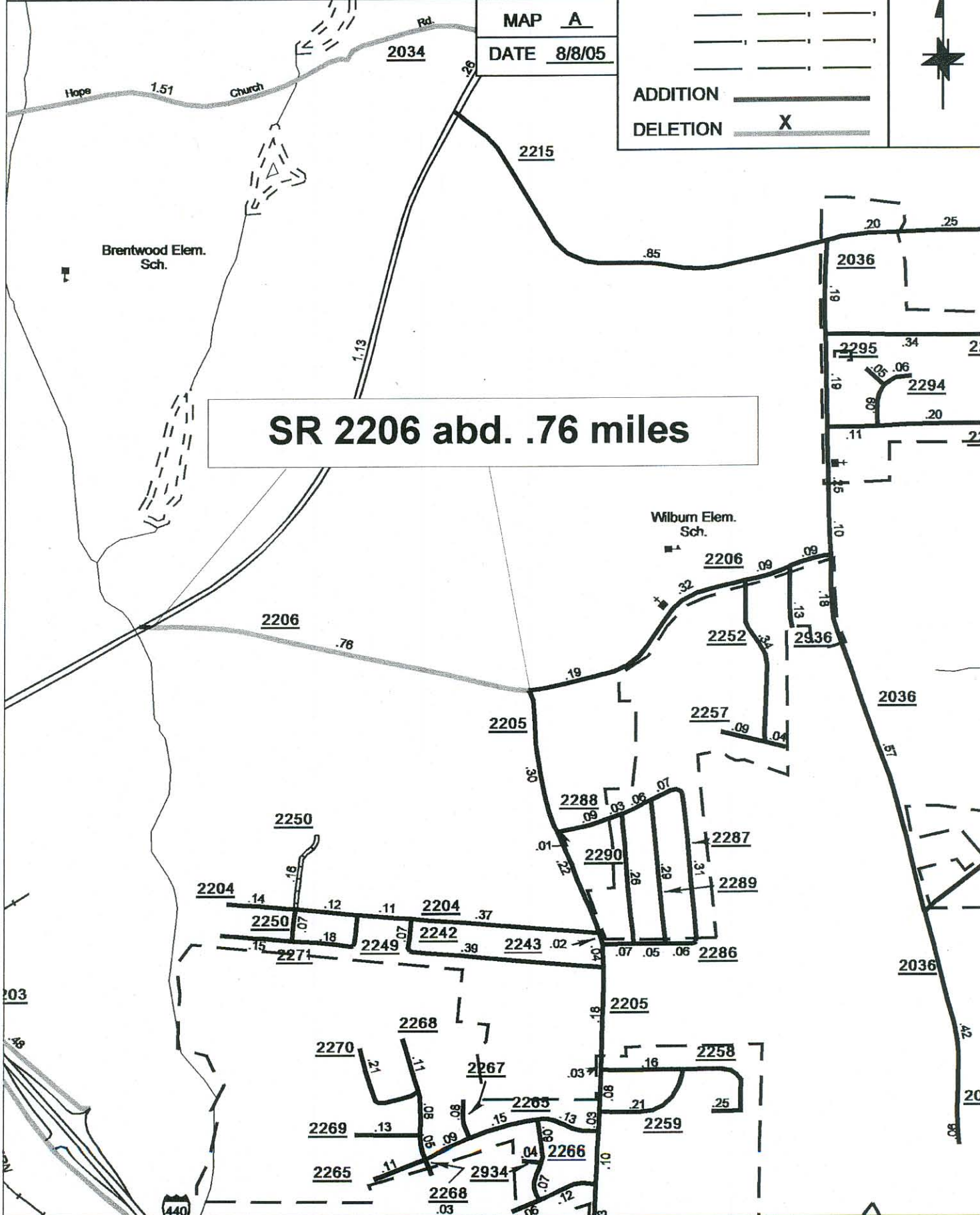
SR #: 2206

MAP A

DATE 8/8/05

ADDITION _____

DELETION X



SR 2206 abd. .76 miles

SOURCE: Plat

SHEET: 2 OF 9

NAME: RLN

SCALE: 4:1