



STATE OF NORTH CAROLINA
DEPARTMENT OF TRANSPORTATION

MICHAEL F. EASLEY
GOVERNOR

April 14, 2005

LYNDO TIPPETT
SECRETARY

MEMORANDUM TO: Mr. Michael A. Pettyjohn, PE
Division Engineer
Division 11

FROM: Forrest L. Robson, PE
GIS Director

SUBJECT: Road System Changes

The Road Inventory Section has been authorized to make the following changes to the state road system as indicated below. We request that you make similar changes to the related maps and files in your Division and District offices, and install appropriate road number signs if necessary. We have updated our records and county maps accordingly. If our system changes do not conform to the actual conditions in the field, please return this memorandum with recommendations.

R-2240A

Project Number	County	Approval Date
6.769002B	WILKES	5/13/04

Inquires about secondary road petition changes should be referred to Ron Tucker, Secondary Roads Group Supervisor at (919) 212-6080. Inquires about TIP Project changes should be referred to Tom Schroeder, Primary Highway Group Supervisor at (919) 212-6074. If you have further questions, please contact Hardee Cox, Road Inventory Manager at (919) 212-6060. Thank you for your assistance.

FLR/hrc
enclosures ()

- cc: BSIP
- Bridge Maintenance
- Pavement Management
- Permit Unit
- Right of Way
- Safety Management
- State Road Maintenance
- Traffic Engineering
- Traffic Surveys

MAILING ADDRESS:
NC DEPARTMENT OF TRANSPORTATION
GEOGRAPHIC INFORMATION SYSTEMS
1587 MAIL SERVICE CENTER
RALEIGH NC 27699-1587



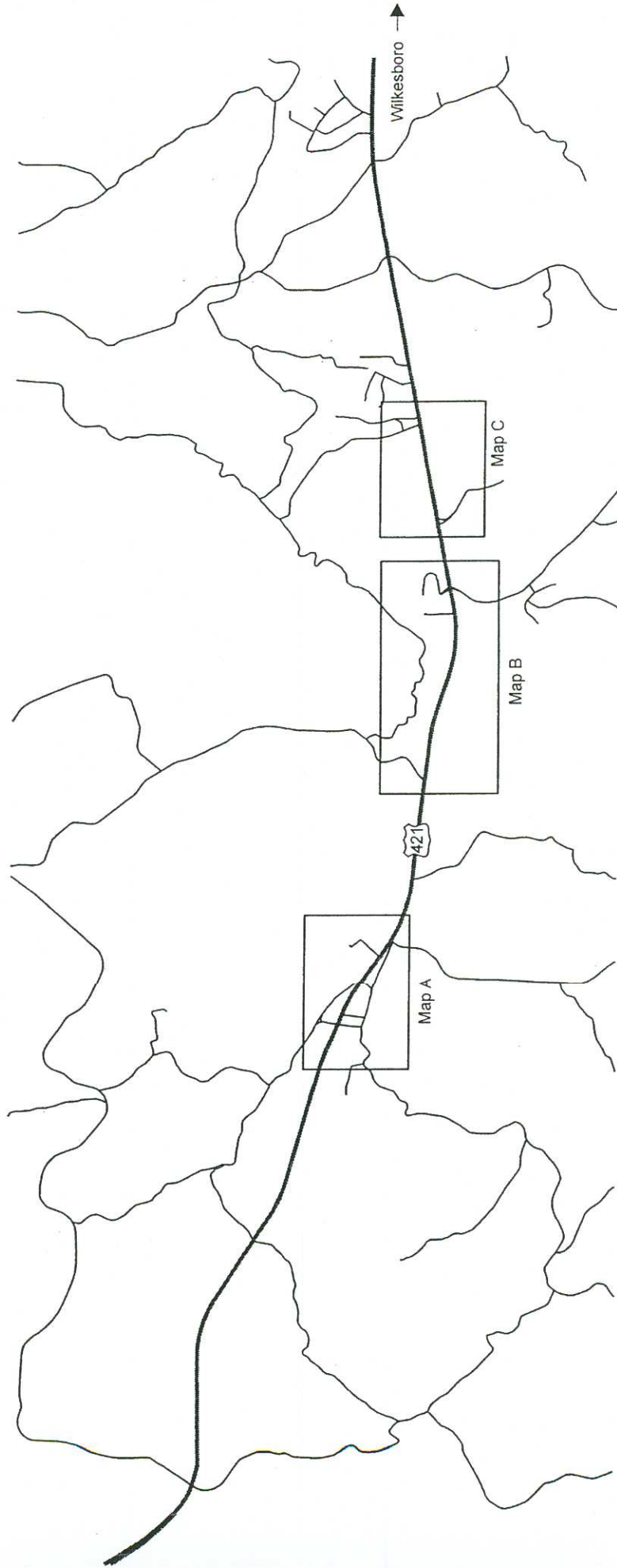
www.ncdot.org/statewide/planning/gis

DELIVERY ADDRESS:
3401 CARL SANDBURG CT.
RALEIGH, NC 27610
PHONE: (919) 212-6000
FAX: (919) 212-5999

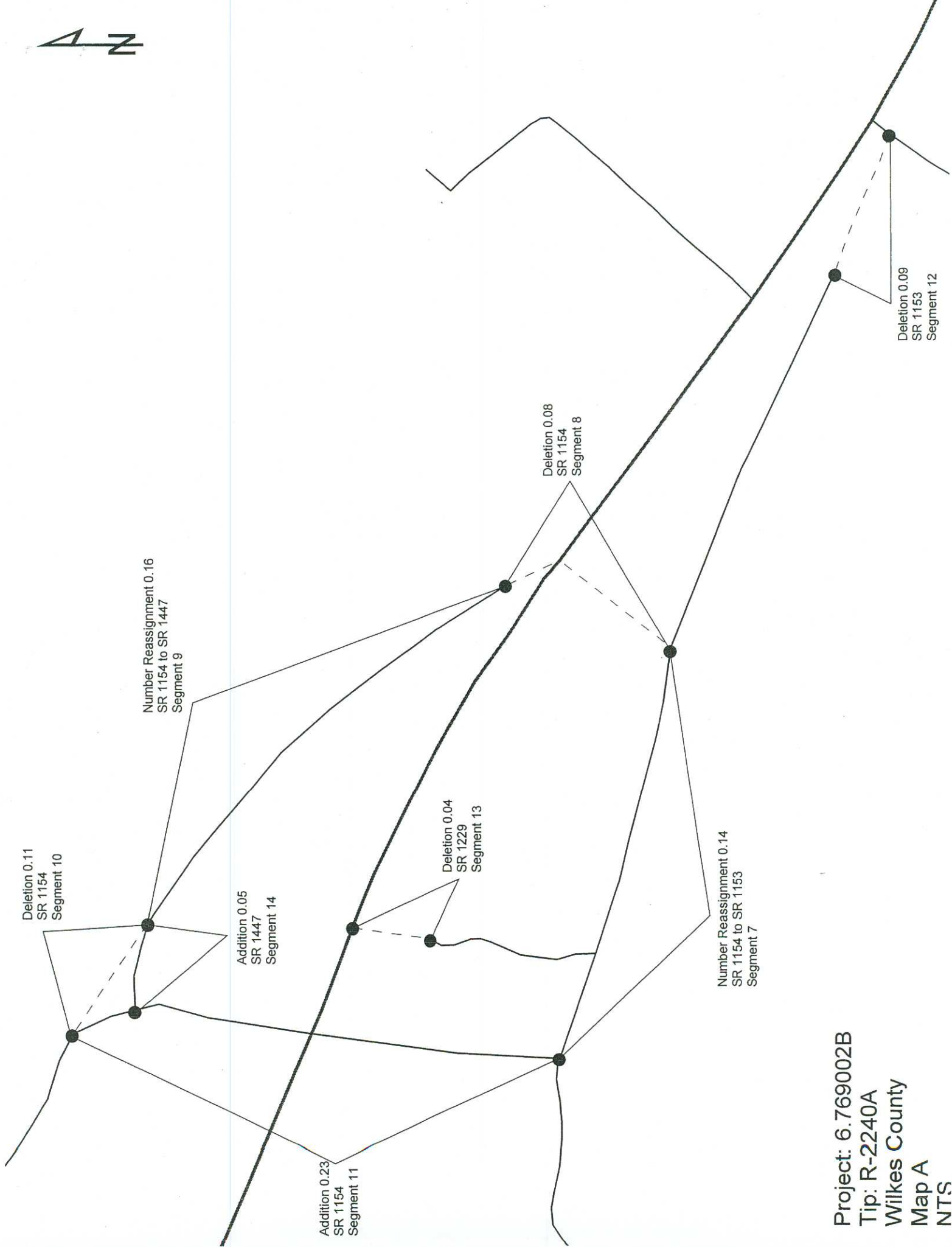
Road System Changes

PROJECT NUMBER	COUNTY	APPROVAL DATE	NEW NUMBER	EXISTING NUMBER	STREET NAME	LENGTH (miles)	TYPE OF CHANGE	REMARKS (See Attached Map)
6.769002B	WILKES	5/13/04		SR 1145	NORTH RECREATION DR	0.08	SYSTEM DELETION VIA PROJECT	MAP B, SEGMENT 1
6.769002B	WILKES	5/13/04		SR 1145	SOUTH RECREATION DR	0.08	SYSTEM DELETION VIA PROJECT	MAP B, SEGMENT 1
6.769002B	WILKES	5/13/04		SR 1145	SOUTH RECREATION DR	0.07	SYSTEM ADDITION VIA PROJECT	MAP B, SEGMENT 2
6.769002B	WILKES	5/13/04		SR 1145	NORTH RECREATION DR	0.08	SYSTEM ADDITION VIA PROJECT	MAP B, SEGMENT 2
6.769002B	WILKES	5/13/04		SR 1195	FOX RD	0.12	SYSTEM DELETION VIA PROJECT	MAP C, SEGMENT 3
6.769002B	WILKES	5/13/04		SR 1195	FOX RD	0.12	SYSTEM ADDITION VIA PROJECT	MAP C, SEGMENT 4
6.769002B	WILKES	5/13/04		SR 1378	WINFIELD HUFFMAN RD	0.10	SYSTEM DELETION VIA PROJECT	MAP C, SEGMENT 5
6.769002B	WILKES	5/13/04		SR 1378	WINFIELD HUFFMAN RD	0.09	SYSTEM ADDITION VIA PROJECT	MAP C, SEGMENT 6
6.769002B	WILKES	5/13/04	SR 1153	SR 1154	CHAMPION/MT PLEASANT RD	0.14	NUMBER REASSIGNMENT VIA PROJECT	MAP A, SEGMENT 7
6.769002B	WILKES	5/13/04		SR 1154	CHAMPION/MT PLEASANT RD	0.08	SYSTEM DELETION VIA PROJECT	MAP A, SEGMENT 8
6.769002B	WILKES	5/13/04	SR 1447	SR 1154	CHAMPION/MT PLEASANT RD	0.16	NUMBER REASSIGNMENT VIA PROJECT	MAP A, SEGMENT 9
6.769002B	WILKES	5/13/04		SR 1154	CHAMPION/MT PLEASANT RD	0.11	SYSTEM DELETION VIA PROJECT	MAP A, SEGMENT 10
6.769002B	WILKES	5/13/04		SR 1154	CHAMPION/MT PLEASANT RD	0.23	SYSTEM ADDITION VIA PROJECT	MAP A, SEGMENT 11

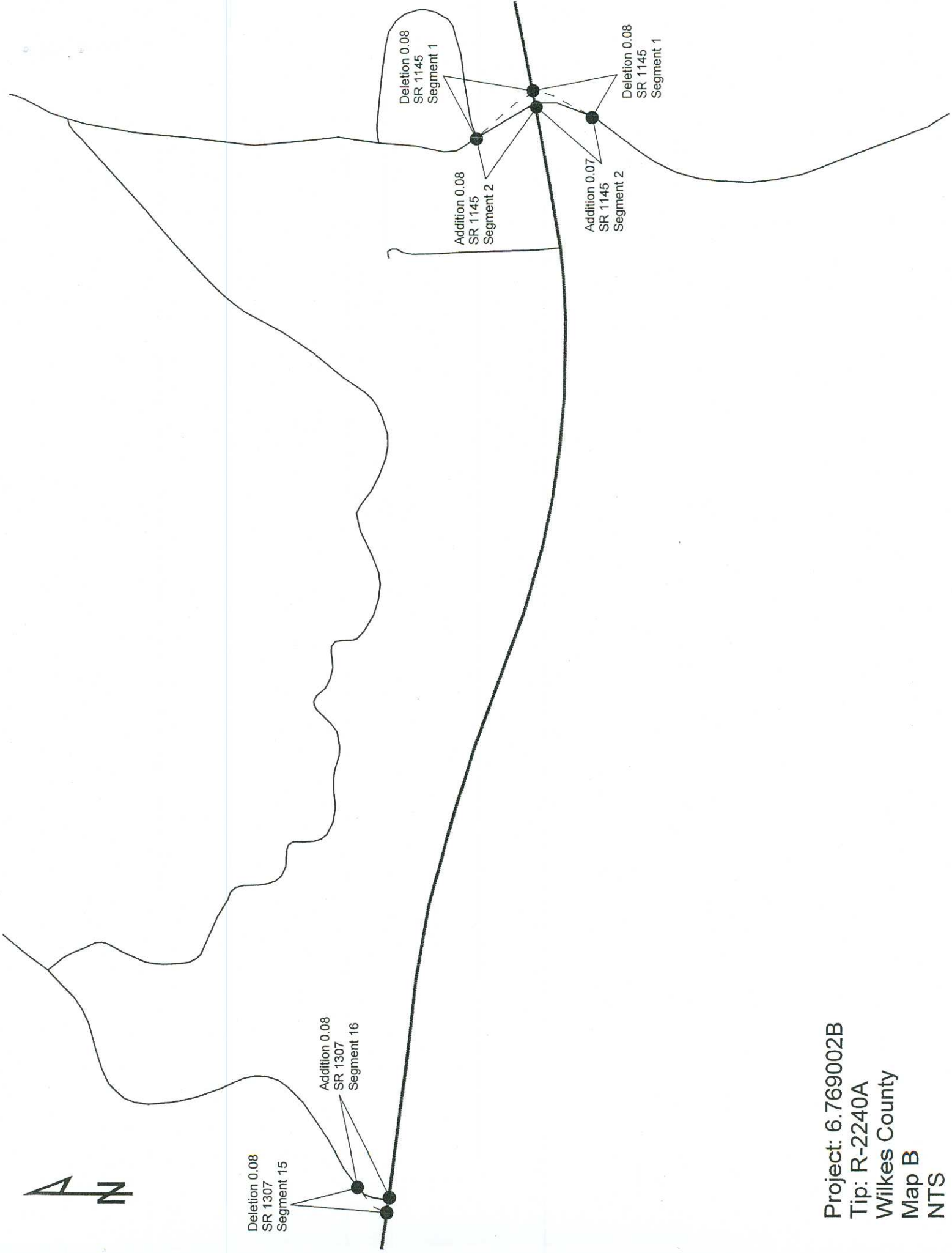
PROJECT NUMBER	COUNTY	APPROVAL DATE	NEW NUMBER	EXISTING NUMBER	STREET NAME	LENGTH (miles)	TYPE OF CHANGE	REMARKS (See Attached Map)
6.769002B	WILKES	5/13/04		SR 1153	CHAMPION/MT PLEASANT RD	0.09	SYSTEM DELETION VIA PROJECT	MAP A, SEGMENT 12
6.769002B	WILKES	5/13/04		SR 1229	WEST WILKES MED CENTER RD	0.04	SYSTEM DELETION VIA PROJECT	MAP A, SEGMENT 13
6.769002B	WILKES	5/13/04		SR 1447		0.05	SYSTEM ADDITION VIA PROJECT	MAP A, SEGMENT 14
6.769002B	WILKES	5/13/04		SR 1307	BOILING SPRING RD	0.08	SYSTEM DELETION VIA PROJECT	MAP B, SEGMENT 15
6.769002B	WILKES	5/13/04		SR 1307	BOILING SPRING RD	0.08	SYSTEM ADDITION VIA PROJECT	MAP B, SEGMENT 16



Project: 6.769002B
Tip: R-2240A
Wilkes County



Project: 6.769002B
Tip: R-2240A
Wilkes County
Map A
NTS



Deletion 0.08
SR 1307
Segment 15

Addition 0.08
SR 1307
Segment 16

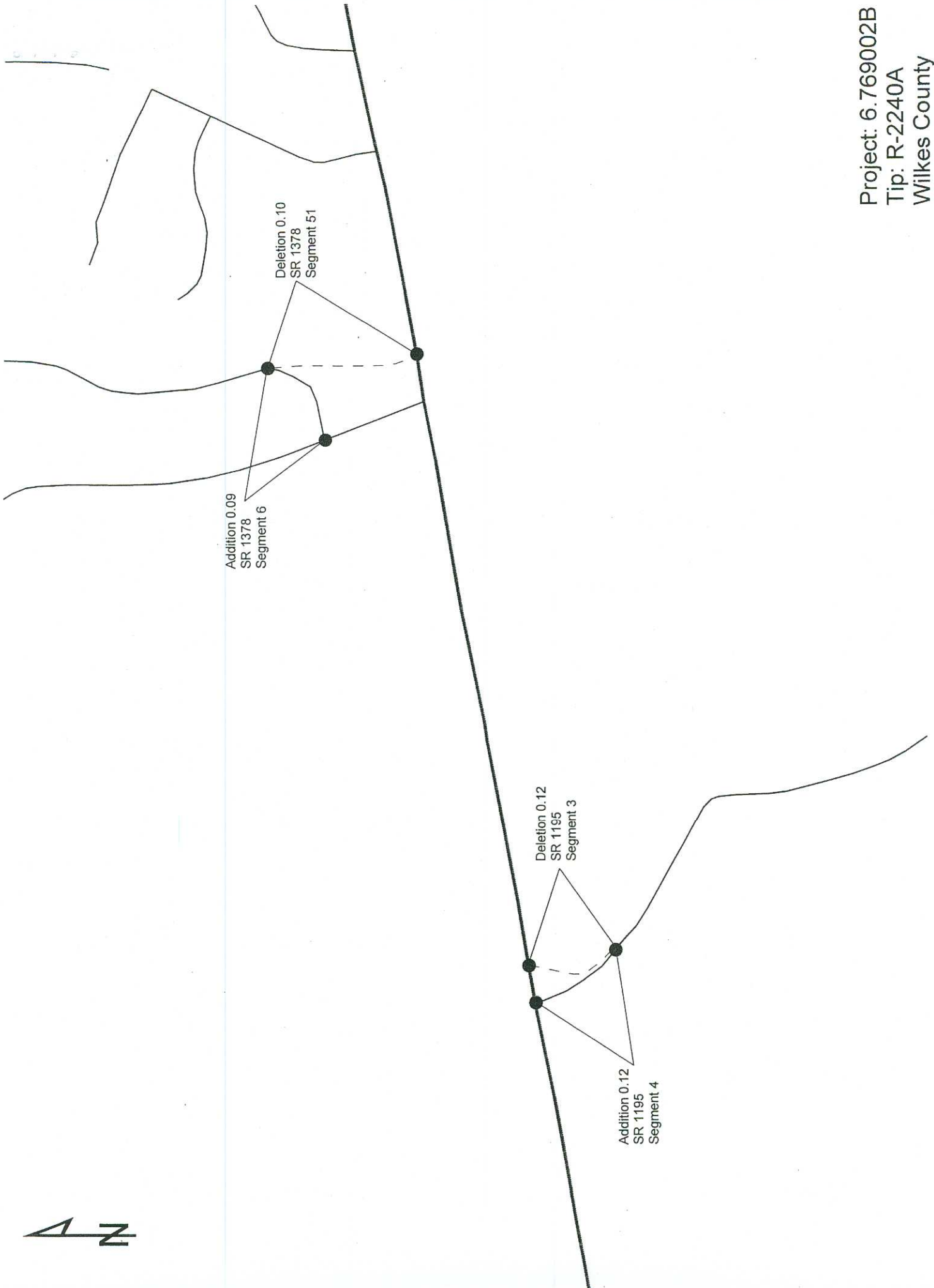
Deletion 0.08
SR 1145
Segment 1

Addition 0.08
SR 1145
Segment 2

Addition 0.07
SR 1145
Segment 2

Deletion 0.08
SR 1145
Segment 1

Project: 6.769002B
Tip: R-2240A
Wilkes County
Map B
NTS



Project: 6.769002B
Tip: R-2240A
Wilkes County
Map C
MTC