



STATE OF NORTH CAROLINA
DEPARTMENT OF TRANSPORTATION

MICHAEL F. EASLEY
GOVERNOR

Thursday, November 18, 2004

LYNDO TIPPETT
SECRETARY

MEMORANDUM TO: Mr. S. Pat Ivey, PE
Division Engineer
Division 9

FROM: Forrest L. Robson, PE
GIS Director

SUBJECT: Road System Changes

The Road Inventory Section has been authorized to make the following changes to the state road system as indicated below. We request that you make similar changes to the related maps and files in your Division and District offices, and install appropriate road number signs if necessary. We have updated our records and county maps accordingly. If our system changes do not conform to the actual conditions in the field, please return this memorandum with recommendations.

I-2511BB

Project Number	County	Approval Date
8.1631508	ROWAN	5/18/04

Inquires about secondary road petition changes should be referred to Ron Tucker, Secondary Roads Group Supervisor at (919) 212-6080. Inquires about TIP Project changes should be referred to Tom Schroeder, Primary Highway Group Supervisor at (919) 212-6074. If you have further questions, please contact Hardee Cox, Road Inventory Manager at (919) 212-6060. Thank you for your assistance.

FLR/hrc
enclosures ()

- cc: BSIP
Bridge Maintenance
Pavement Management
Permit Unit
Right of Way
Safety Management
State Road Maintenance
Traffic Engineering
Traffic Surveys

MAILING ADDRESS:
NC DEPARTMENT OF TRANSPORTATION
GEOGRAPHIC INFORMATION SYSTEMS
1587 MAIL SERVICE CENTER
RALEIGH NC 27699-1587



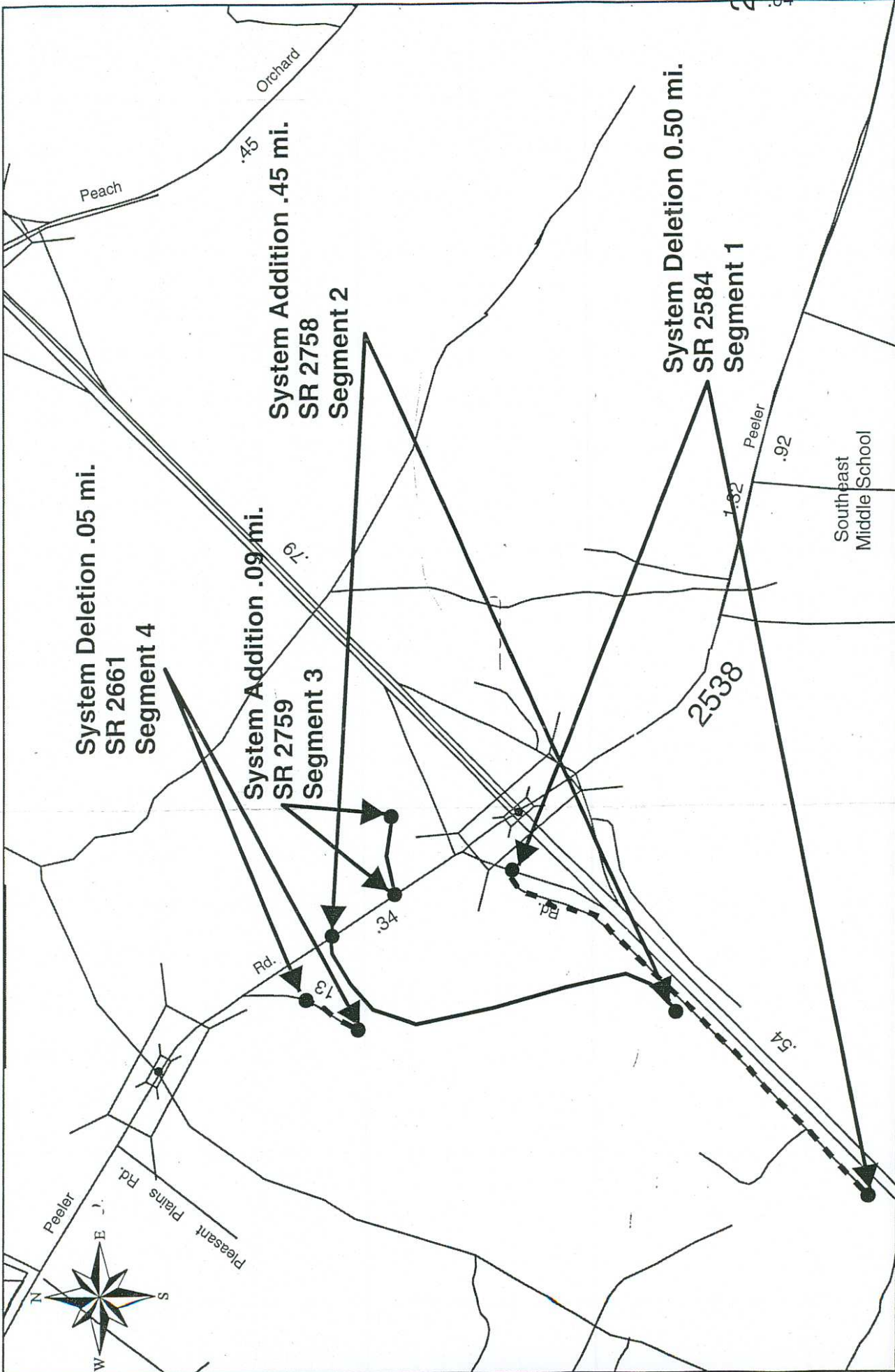
www.ncdot.org/statewide/planning/gis

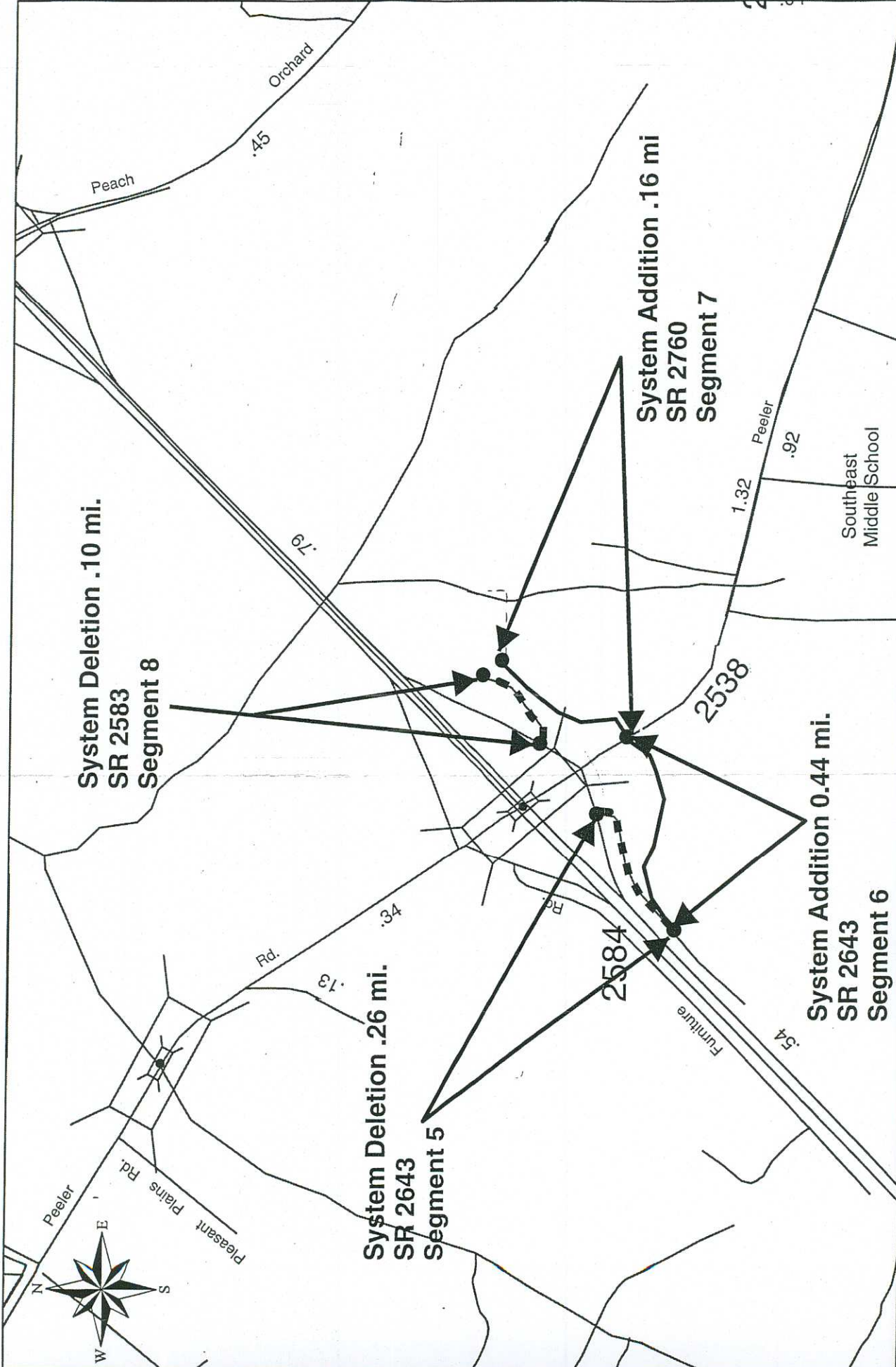
DELIVERY ADDRESS:
3401 CARL SANDBURG CT.
RALEIGH, NC 27610
PHONE: (919) 212-6000
FAX: (919) 212-5999

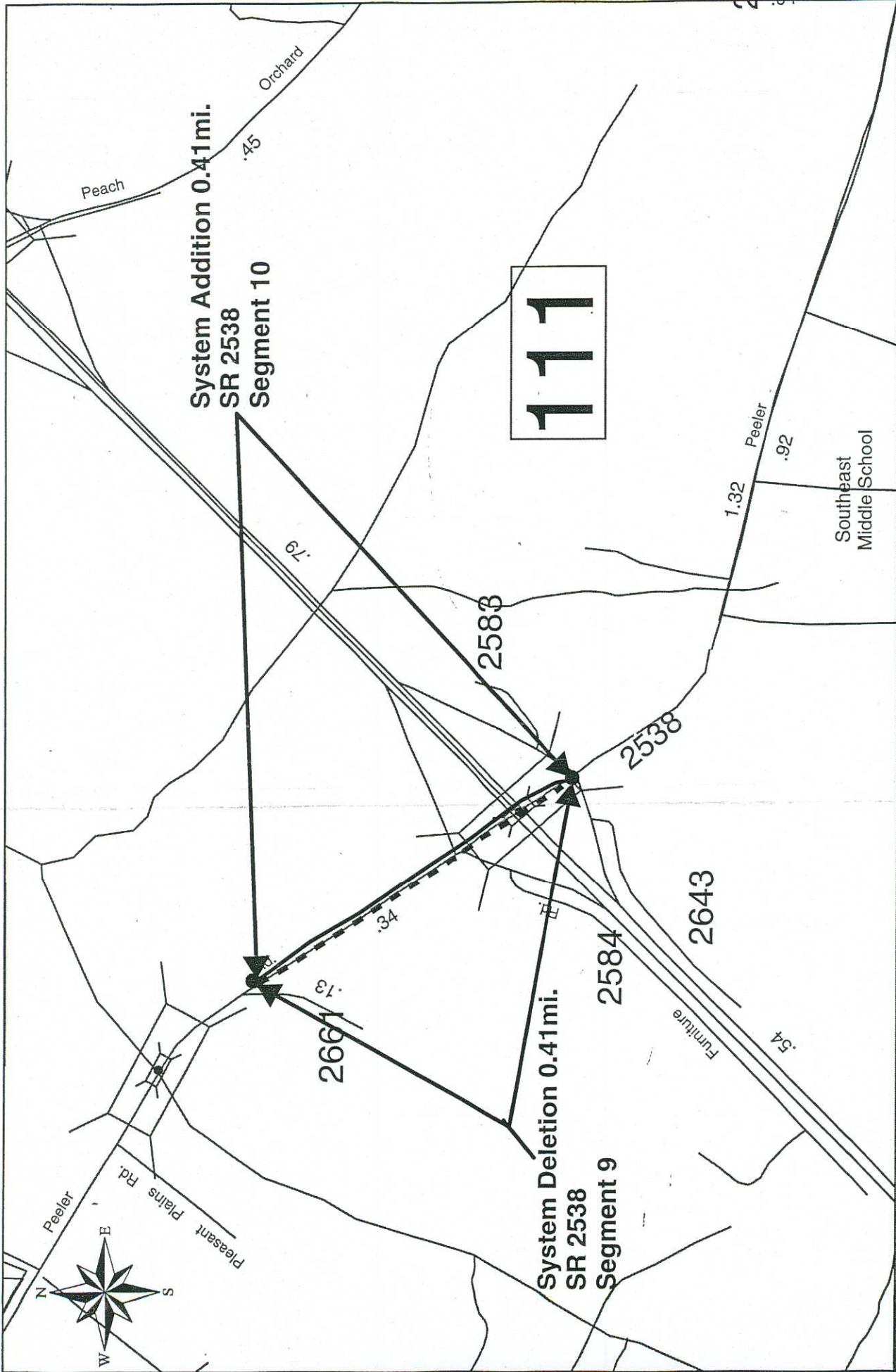
Road System Changes

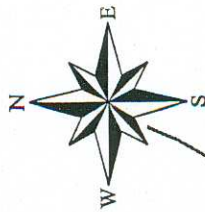
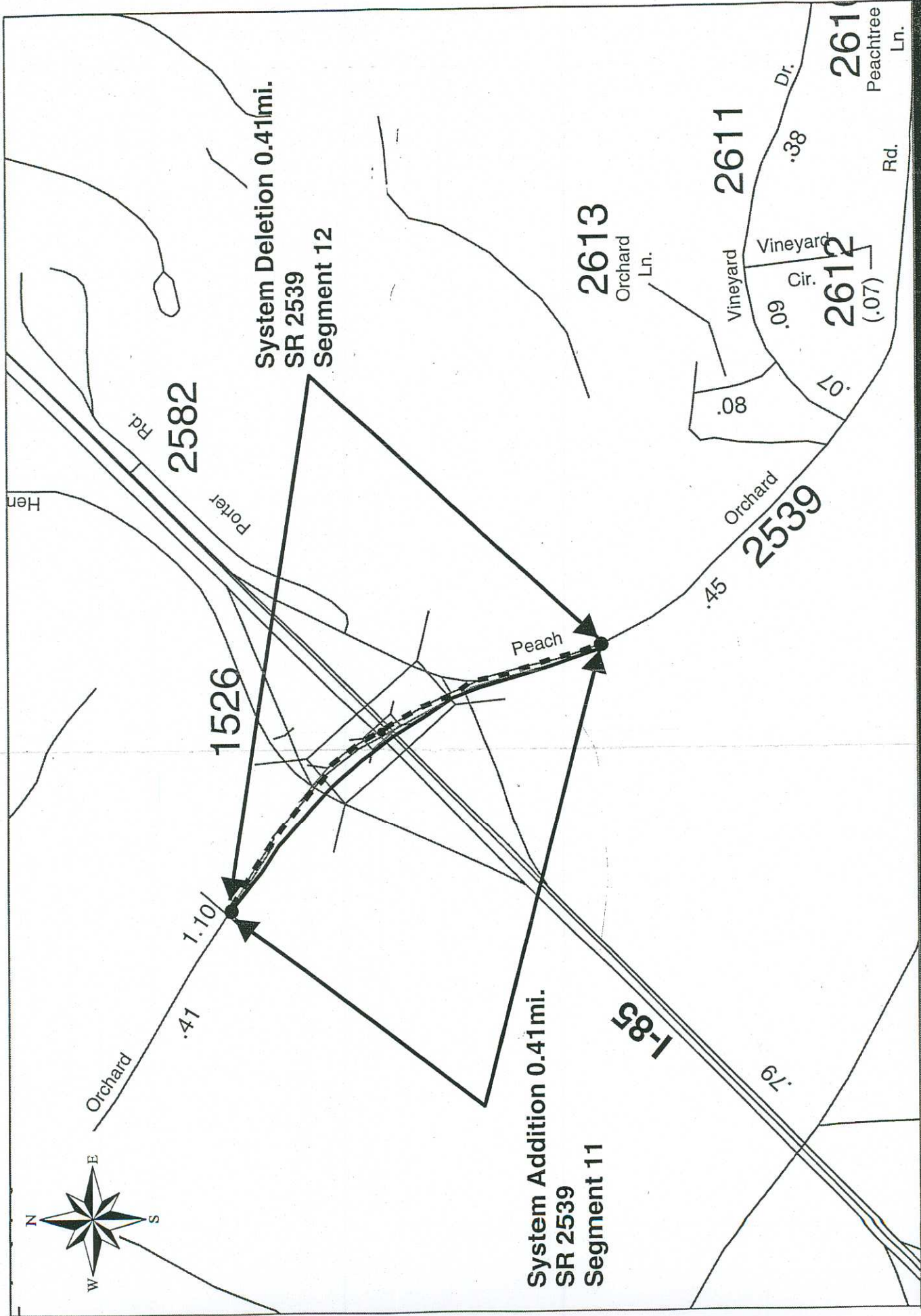
PROJECT NUMBER	COUNTY	APPROVAL DATE	NEW NUMBER	EXISTING NUMBER	STREET NAME	LENGTH (miles)	TYPE OF CHANGE	REMARKS (See Attached Map)
8.1631508	ROWAN	5/18/04		SR 2584		0.50	SYSTEM DELETION VIA PROJECT	MAP A, SEGMENT 1
8.1631508	ROWAN	5/18/04	SR 2758			0.45	SYSTEM ADDITION VIA PROJECT	MAP A, SEGMENT 2
8.1631508	ROWAN	5/18/04	SR 2759			0.09	SYSTEM ADDITION VIA PROJECT	MAP A, SEGMENT 3
8.1631508	ROWAN	5/18/04		SR 2661		0.05	SYSTEM DELETION VIA PROJECT	MAP A, SEGMENT 4
8.1631508	ROWAN	5/18/04		SR 2643		0.26	SYSTEM DELETION VIA PROJECT	MAP B, SEGMENT 5
8.1631508	ROWAN	5/18/04		SR 2643		0.44	SYSTEM ADDITION VIA PROJECT	MAP B, SEGMENT 6
8.1631508	ROWAN	5/18/04	SR 2760			0.16	SYSTEM ADDITION VIA PROJECT	MAP B, SEGMENT 7
8.1631508	ROWAN	5/18/04		SR 2583		0.10	SYSTEM DELETION VIA PROJECT	MAP B, SEGMENT 8
8.1631508	ROWAN	5/18/04		SR 2538 ✓		0.41	SYSTEM DELETION VIA PROJECT	MAP C, SEGMENT 9
8.1631508	ROWAN	5/18/04		SR 2538 ✓		0.41	SYSTEM ADDITION VIA PROJECT	MAP C, SEGMENT 10
8.1631508	ROWAN	5/18/04		SR 2539		0.41	SYSTEM ADDITION VIA PROJECT	MAP D, SEGMENT 11
8.1631508	ROWAN	5/18/04		SR 2539		0.41	SYSTEM DELETION VIA PROJECT	MAP D, SEGMENT 12
8.1631508	ROWAN	5/18/04		SR 2582		0.22	SYSTEM ADDITION VIA PROJECT	MAP E, SEGMENT 13

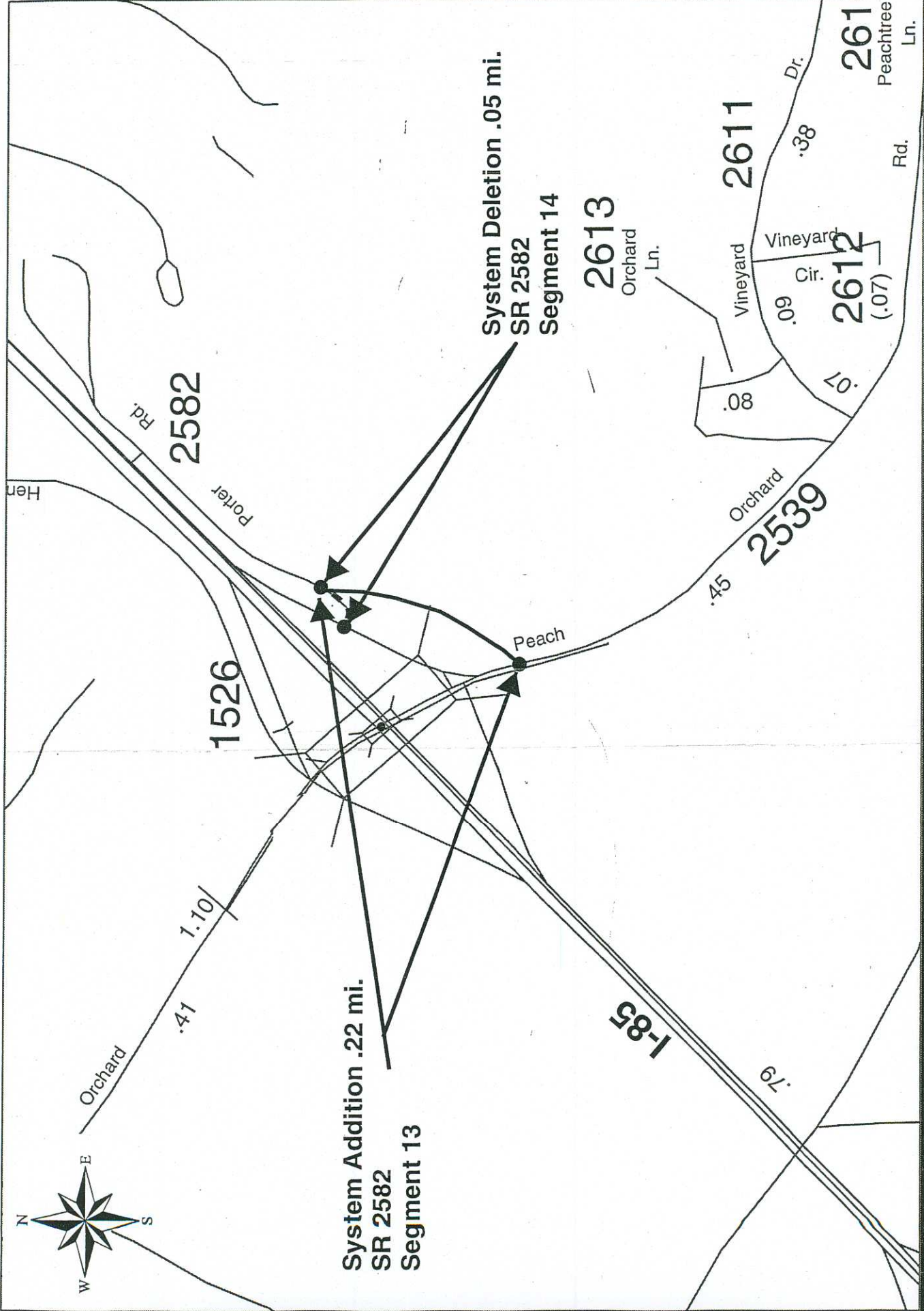
PROJECT NUMBER	COUNTY	APPROVAL DATE	NEW NUMBER	EXISTING NUMBER	STREET NAME	LENGTH (miles)	TYPE OF CHANGE	REMARKS (See Attached Map)
8.1631508	ROWAN	5/18/04		SR 2582		0.05	SYSTEM DELETION VIA PROJECT	MAP E, SEGMENT 14
8.1631508	ROWAN	5/18/04		SR 2528		0.69	SYSTEM ADDITION VIA PROJECT	MAP F, SEGMENT 15
8.1631508	ROWAN	5/18/04		SR 2528		0.69	SYSTEM DELETION VIA PROJECT	MAP F, SEGMENT 16
8.1631508	ROWAN	5/18/04		SR 2540		0.52	SYSTEM ADDITION VIA PROJECT	MAP G, SEGMENT 18
8.1631508	ROWAN	5/18/04		SR 2540		0.60	SYSTEM DELETION VIA PROJECT	MAP G, SEGMENT 19
8.1631508	ROWAN	5/18/04	SR 2761			0.28	SYSTEM ADDITION VIA PROJECT	MAP H, SEGMENT 20
8.1631508	ROWAN	5/18/04		SR 2580		0.04	SYSTEM DELETION VIA PROJECT	MAP H, SEGMENT 21
8.1631508	ROWAN	5/18/04	SR 2762			0.30	SYSTEM ADDITION VIA PROJECT	MAP I, SEGMENT 22
8.1631508	ROWAN	5/18/04		SR 2635		0.13	SYSTEM DELETION VIA PROJECT	MAP I, SEGMENT 23
8.1631508	ROWAN	5/18/04		SR 2574		0.35	SYSTEM DELETION VIA PROJECT	MAP I, SEGMENT 24

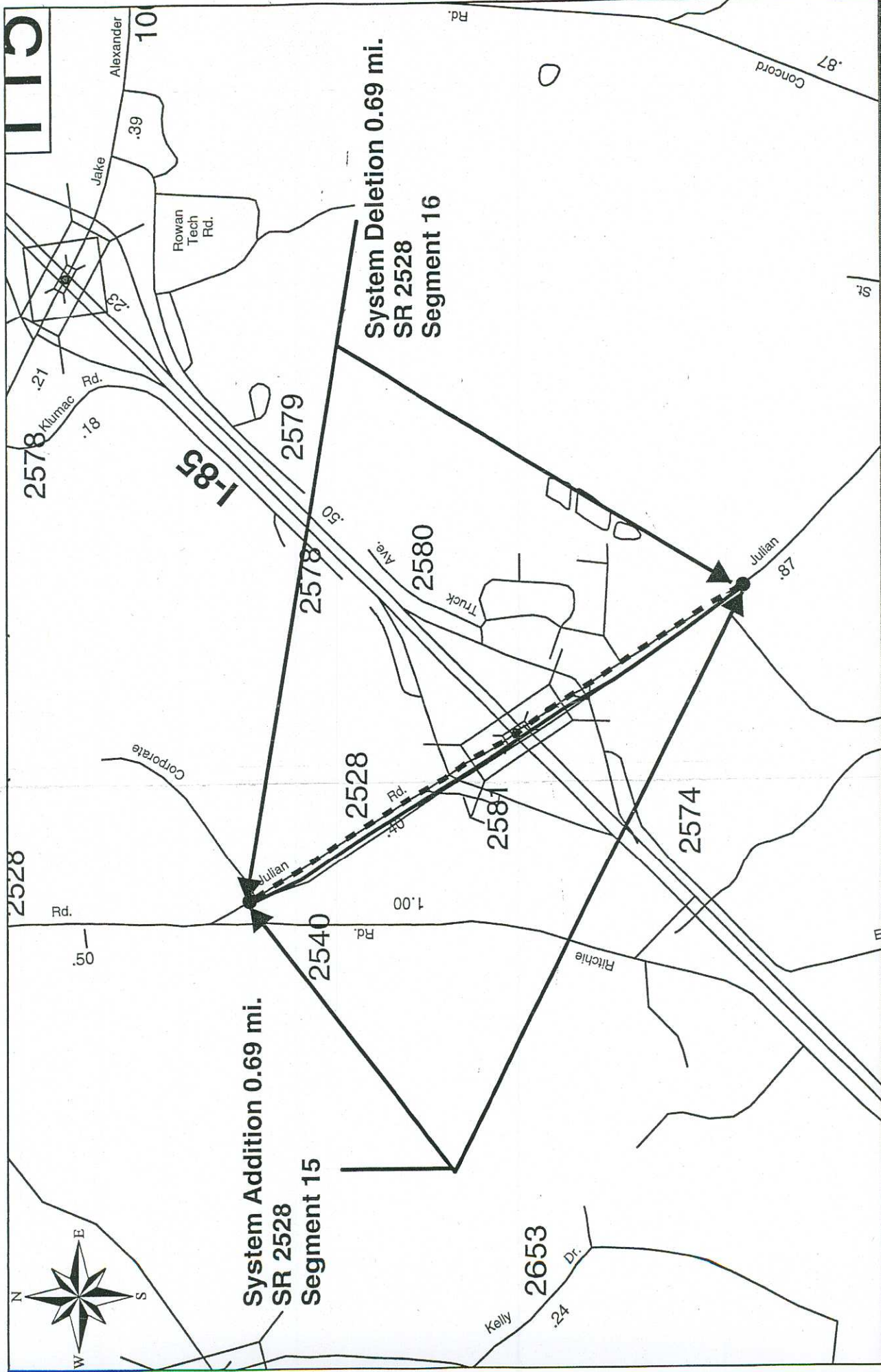






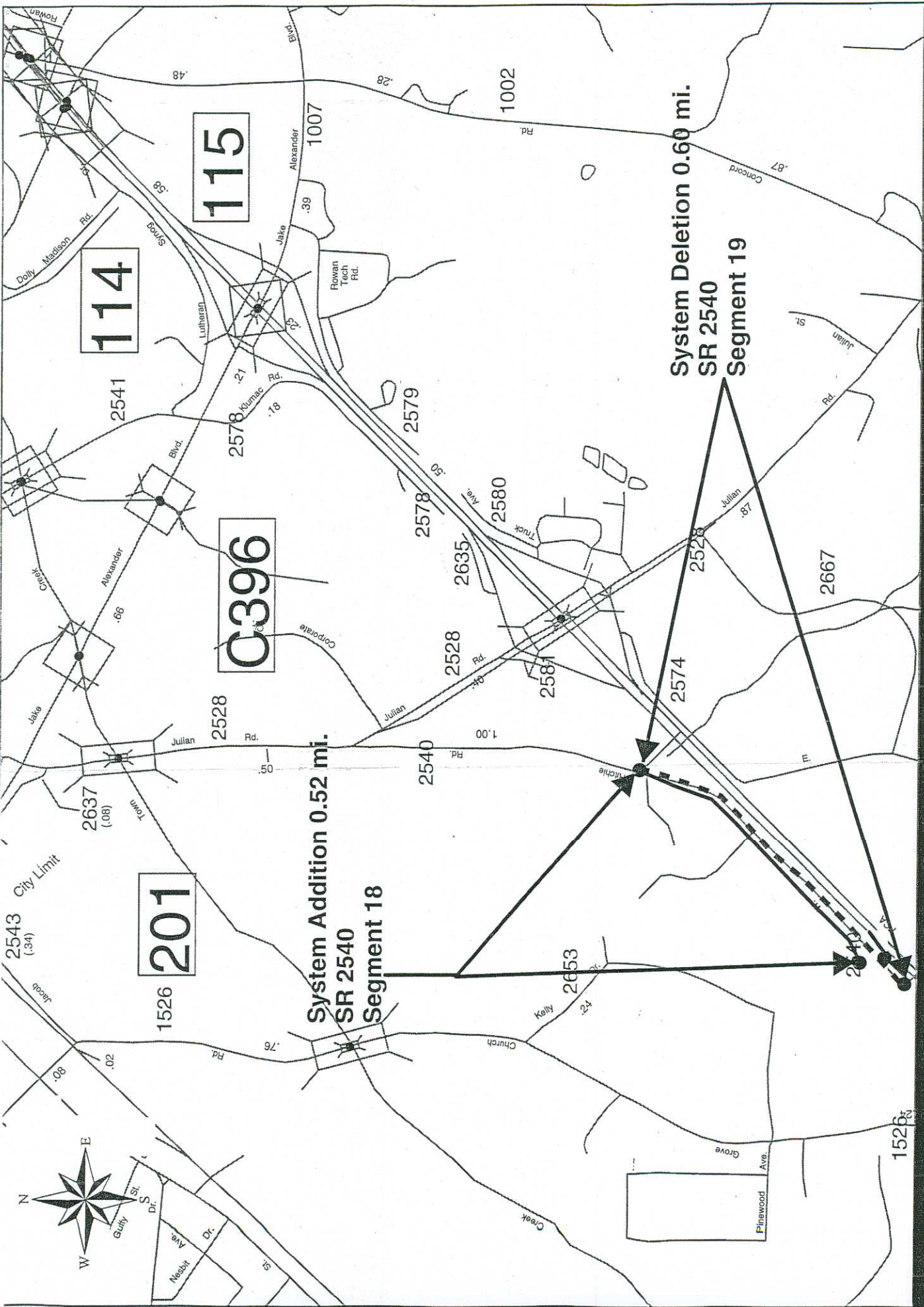






System Addition 0.69 mi.
SR 2528
Segment 15

System Deletion 0.69 mi.
SR 2528
Segment 16





2540

Rd.

1.00

Julian

System Addition .28 mi.
SR 2761
Segment 20

2528

Rd.

.40

2578

.50

2579

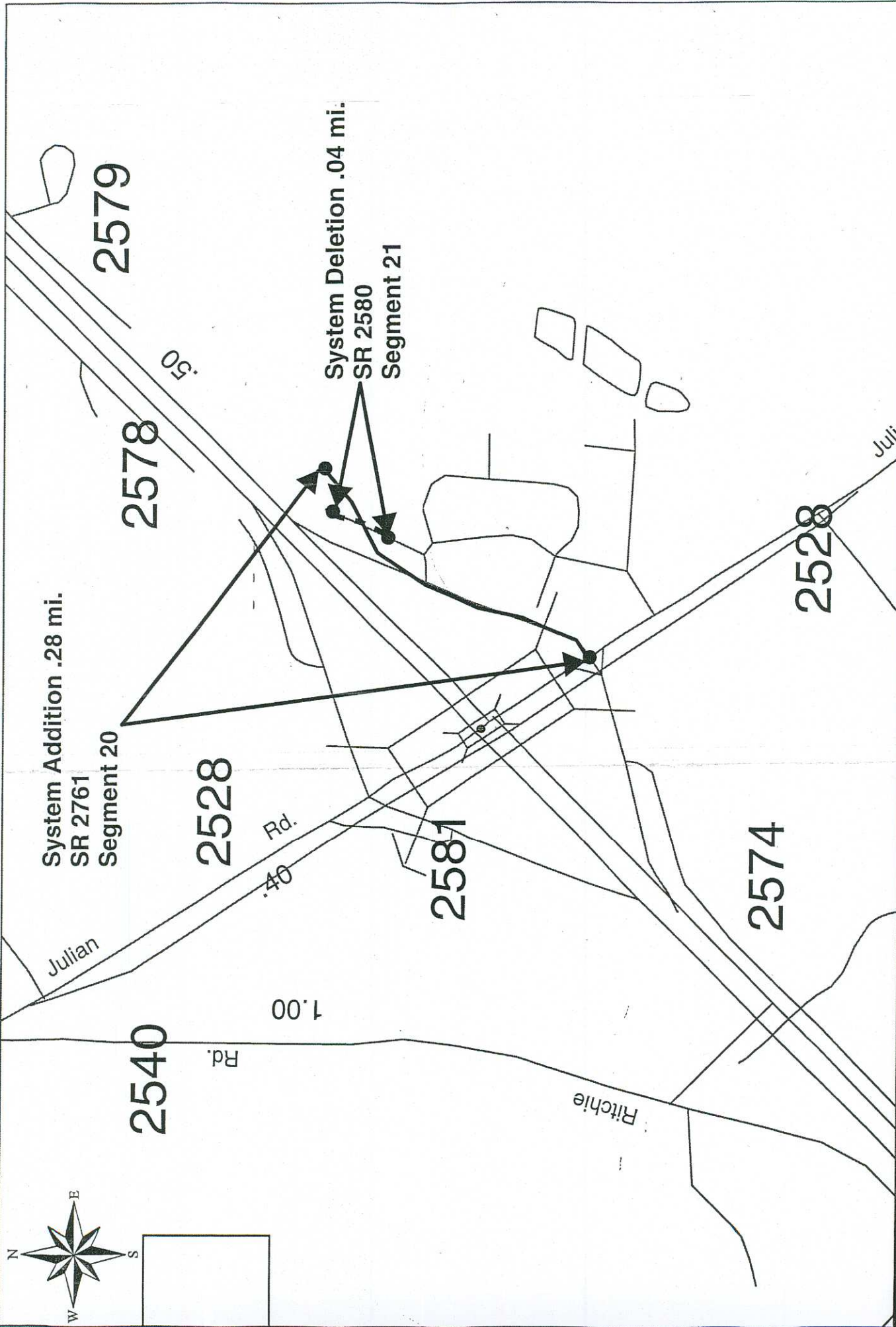
System Deletion .04 mi.
SR 2580
Segment 21

2581

2574

2528

Julian



Project # 8.1631508
I-2511BB

Rowan County
Map H

