



STATE OF NORTH CAROLINA
DEPARTMENT OF TRANSPORTATION

*Out
March 2000
15witz 4. jpy*

MICHAEL F. EASLEY
GOVERNOR

March 10, 2005

LYNDO TIPPETT
SECRETARY

MEMORANDUM TO: Mr. Jay Swain, PE
Division Engineer
Division 13

FROM: Forrest L. Robson, PE
GIS Director

SUBJECT: Road System Changes

The Road Inventory Section has been authorized to make the following changes to the state road system as indicated below. We request that you make similar changes to the related maps and files in your Division and District offices, and install appropriate road number signs if necessary. We have updated our records and county maps accordingly. If our system changes do not conform to the actual conditions in the field, please return this memorandum with recommendations.

Project Number	County	Approval Date
6.879001B	MCDOWELL	12/16/03

Inquires about secondary road petition changes should be referred to Ron Tucker, Secondary Roads Group Supervisor at (919) 212-6080. Inquires about TIP Project changes should be referred to Tom Schroeder, Primary Highway Group Supervisor at (919) 212-6074. If you have further questions, please contact Hardee Cox, Road Inventory Manager at (919) 212-6060. Thank you for your assistance.

FLR/hrc
enclosures ()

- cc BSIP
- Bridge Maintenance
- Pavement Management
- Permit Unit
- Right of Way
- Safety Management
- State Road Maintenance
- Traffic Engineering
- Traffic Surveys

MAILING ADDRESS:
NC DEPARTMENT OF TRANSPORTATION
GEOGRAPHIC INFORMATION SYSTEMS
1587 MAIL SERVICE CENTER
RALEIGH NC 27699-1587



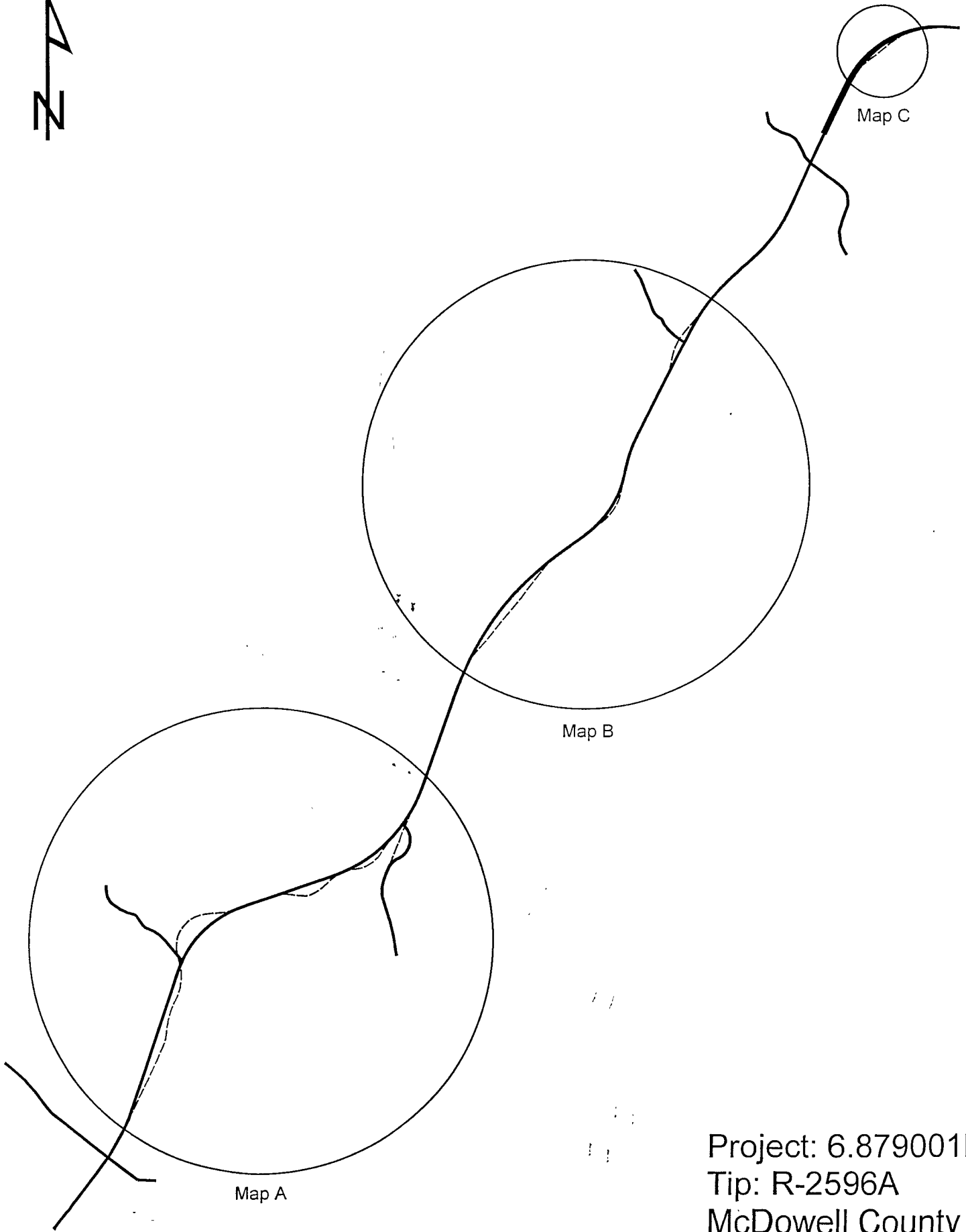
www.ncdot.org/statewide/planning/gis

DELIVERY ADDRESS:
3401 CARL SANDBURG CT.
RALEIGH, NC 27610
PHONE: (919) 212-6000
FAX: (919) 212-5999

Road System Changes

PROJECT NUMBER	COUNTY	APPROVAL DATE	NEW NUMBER	EXISTING NUMBER	STREET NAME	LENGTH (miles)	TYPE OF CHANGE	REMARKS (See Attached Map)
6.879001B	MCDOWELL	12/16/03		US 221		0.68	SYSTEM DELETION VIA PROJECT	MAP A, SEGMENT 1
6.879001B	MCDOWELL	12/16/03		US 221		0.37	SYSTEM DELETION VIA PROJECT	MAP A, SEGMENT 2
6.879001B	MCDOWELL	12/16/03		US 221		0.39	SYSTEM DELETION VIA PROJECT	MAP B, SEGMENT 3
6.879001B	MCDOWELL	12/16/03		US 221		0.07	SYSTEM DELETION VIA PROJECT	MAP B, SEGMENT 4
6.879001B	MCDOWELL	12/16/03		US 221		0.11	SYSTEM DELETION VIA PROJECT	MAP B, SEGMENT 5
6.879001B	MCDOWELL	12/16/03		US 221		0.10	SYSTEM DELETION VIA PROJECT	MAP C, SEGMENT 6
6.879001B	MCDOWELL	12/16/03		US 221		0.63	SYSTEM ADDITION VIA PROJECT	MAP A, SEGMENT 7
6.879001B	MCDOWELL	12/16/03		US 221		0.35	SYSTEM ADDITION VIA PROJECT	MAP A, SEGMENT 8
6.879001B	MCDOWELL	12/16/03		US 221		0.40	SYSTEM ADDITION VIA PROJECT	MAP B, SEGMENT 9
6.879001B	MCDOWELL	12/16/03		US 221		0.09	SYSTEM ADDITION VIA PROJECT	MAP B, SEGMENT 10
6.879001B	MCDOWELL	12/16/03		US 221		0.11	SYSTEM ADDITION VIA PROJECT	MAP B, SEGMENT 11
6.879001B	MCDOWELL	12/16/03		US 221		0.12	SYSTEM ADDITION VIA PROJECT	MAP C, SEGMENT 12
6.879001B	MCDOWELL	12/16/03		SR 1556	AMERICAN THREAD RD	0.18	SYSTEM DELETION VIA PROJECT	MAP A, SEGMENT 13

PROJECT NUMBER	COUNTY	APPROVAL DATE	NEW NUMBER	EXISTING NUMBER	STREET NAME	LENGTH (miles)	TYPE OF CHANGE	REMARKS (See Attached Map)
6.879001B	MCDOWELL	12/16/03		SR 1556	AMERICAN THREAD RD	0.15	SYSTEM ADDITION VIA PROJECT	MAP A, SEGMENT 14
6.879001B	MCDOWELL	12/16/03		SR 1562	JOHNSON HOLLOW RD	0.02	SYSTEM ADDITION VIA PROJECT	MAP A, SEGMENT 15
6.879001B	MCDOWELL	12/16/03		SR 1564	MARTIN BRANCH RD	0.02	SYSTEM ADDITION VIA PROJECT	MAP B, SEGMENT 16



Map A

Map B

Map C

Project: 6.879001B
Tip: R-2596A
McDowell County
Project Map
NTS



Deletion 0.37
US 221
Segment 2

Addition 0.35
US 221
Segment 8

Deletion 0.18
SR 1556
Segment 13

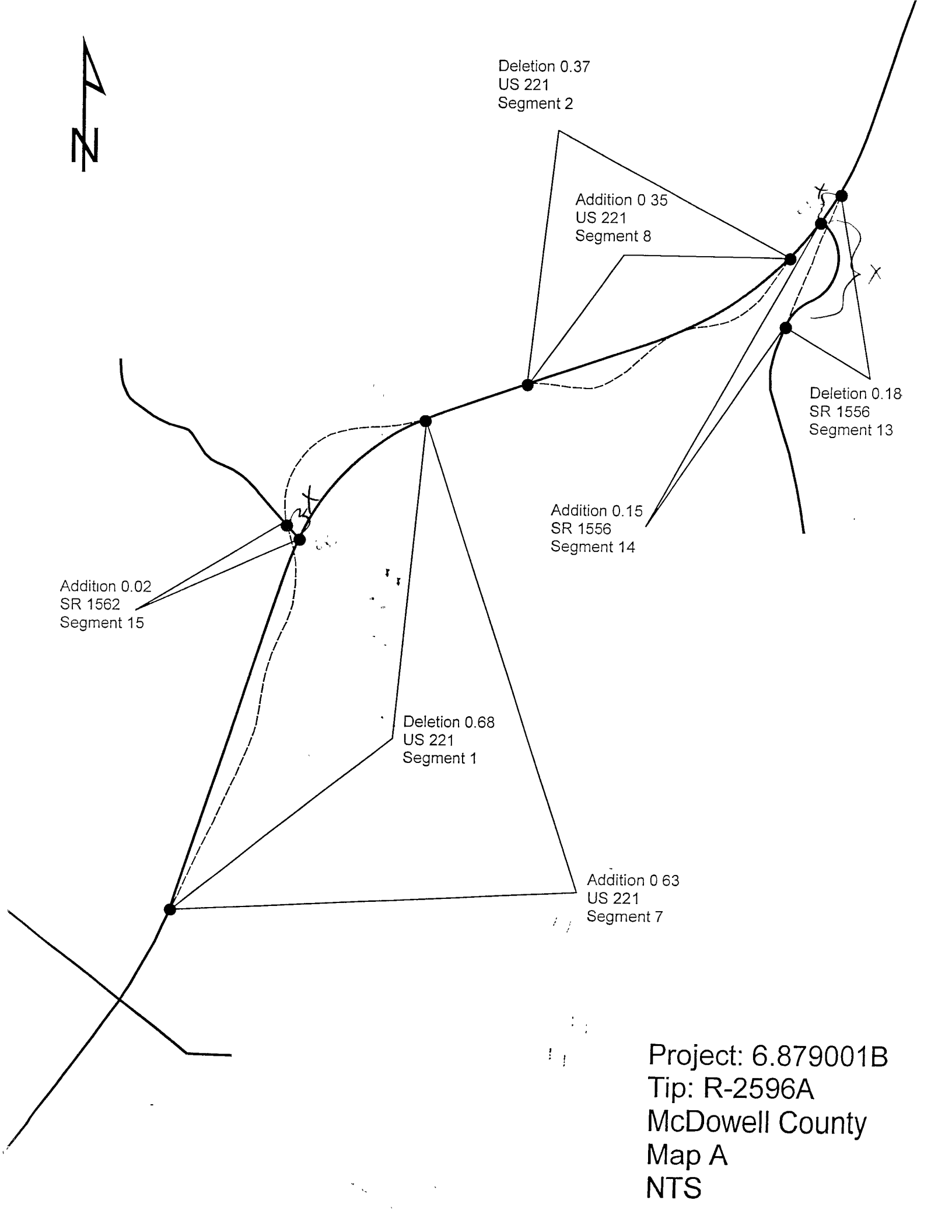
Addition 0.15
SR 1556
Segment 14

Addition 0.02
SR 1562
Segment 15

Deletion 0.68
US 221
Segment 1

Addition 0.63
US 221
Segment 7

Project: 6.879001B
Tip: R-2596A
McDowell County
Map A
NTS





Addition 0 40
US 221
Segment 9

Deletion 0.39
US 221
Segment 3

Addition 0.09
US 221
Segment 10

Deletion 0.07
US 221
Segment 4

Deletion 0 11
US 221
Segment 5

Addition 0.11
US 221
Segment 11

Addition 0.02
SR 1564
Segment 16

Project: 6.879001B
Tip: R-2596A
McDowell County
Map B
NTS



Addition 0.12
US 221
Segment 12

Deletion 0 10
US 221
Segment 6

Project: 6.879001B
Tip: R-2596A
McDowell County
Map C
NTS