



STATE OF NORTH CAROLINA  
DEPARTMENT OF TRANSPORTATION

MICHAEL F. EASLEY  
GOVERNOR

March 30, 2004

LYNDO TIPPETT  
SECRETARY

**MEMORANDUM TO:** Mr. Benton G. Payne, PE  
Division Engineer  
Division 10

**FROM:** Forrest L. Robson, PE  
GIS Director

**SUBJECT:** Road System Changes

The Road Inventory Section has been authorized to make the following changes to the state road system as indicated below. We request that you make similar changes to the related maps and files in your Division and District offices, and install appropriate road number signs if necessary. We have updated our records and county maps accordingly. If our system changes do not conform to the actual conditions in the field, please return this memorandum with recommendations.

*89-1008-11-03*

Municipality	County	Approval Date
89110603	UNION	11/6/03

Inquires about secondary road petition changes should be referred to Ron Tucker, Secondary Roads Group Supervisor at (919) 212-6080. Inquires about TIP Project changes should be referred to Tom Schroeder, Primary Highway Group Supervisor at (919) 212-6074. If you have further questions, please contact Hardee Cox, Road Inventory Manager at (919) 212-6060. Thank you for your assistance.

FLR/hrc  
enclosures ( )

- cc. BSIP
- Bridge Maintenance
  - Pavement Management
  - Permit Unit
  - Right of Way
  - Safety Management
  - State Road Maintenance
  - Traffic Engineering
  - Traffic Surveys

MAILING ADDRESS:  
NC DEPARTMENT OF TRANSPORTATION  
GEOGRAPHIC INFORMATION SYSTEMS  
1587 MAIL SERVICE CENTER  
RALEIGH NC 27699-1587



[www.ncdot.org/statewide/planning/gis](http://www.ncdot.org/statewide/planning/gis)

DELIVERY ADDRESS:  
3401 CARL SANDBURG CT  
RALEIGH, NC 27610  
PHONE (919) 212-6000  
FAX. (919) 212-5999

# Road System Changes

MUNICIPALITY	COUNTY	APPROVAL DATE	NEW NUMBER	EXISTING NUMBER	STREET NAME	LENGTH (miles)	TYPE OF CHANGE	REMARKS (See Attached Map)
89110603	UNION	11/6/03	SR 3221		PINNACLE COURT	0.02	SYSTEM ADDITION VIA MUNICIPAL AGREEMENT	MAP A, SEGMENT 0
89110603	UNION	11/6/03		SR 2927	WATERS REACH LANE	0.20	SYSTEM ADDITION VIA MUNICIPAL AGREEMENT	MAP A, SEGMENT 0
89110603	UNION	11/6/03		SR 2930	COURTFIELD DRIVE	0.11	SYSTEM ADDITION VIA MUNICIPAL AGREEMENT	MAP A, SEGMENT 0
89110603	UNION	11/6/03		SR 3208	HOLLYHEDGE LANE	0.17	SYSTEM ADDITION VIA MUNICIPAL AGREEMENT	MAP A, SEGMENT 0
89110603	UNION	11/6/03		SR 3209	FENWICK DRIVE	0.24	SYSTEM ADDITION VIA MUNICIPAL AGREEMENT	MAP A, SEGMENT 0
89110603	UNION	11/6/03		SR 3212	FARMINGHAM LANE	0.22	SYSTEM ADDITION VIA MUNICIPAL AGREEMENT	MAP A, SEGMENT 0
89110603	UNION	11/6/03		SR 3213	SECRET GARDEN COURT	0.10	SYSTEM ADDITION VIA MUNICIPAL AGREEMENT	MAP A, SEGMENT 0
89110603	UNION	11/6/03		SR 2662	BRANDON OAKS PARKWAY	0.28	SYSTEM ADDITION VIA MUNICIPAL AGREEMENT	MAP A, SEGMENT 0
89110603	UNION	11/6/03	SR 3220		OLD SURREY COURT	0.03	SYSTEM ADDITION VIA MUNICIPAL AGREEMENT	MAP A, SEGMENT 0
89110603	UNION	11/6/03	SR 3230		LAVENHAM PLACE	0.07	SYSTEM ADDITION VIA MUNICIPAL AGREEMENT	MAP A, SEGMENT 0
89110603	UNION	11/6/03	SR 3222		HONEY TREE LANE	0.15	SYSTEM ADDITION VIA MUNICIPAL AGREEMENT	MAP A, SEGMENT 0
89110603	UNION	11/6/03	SR 3223		BEAVER CREEK COURT	0.10	SYSTEM ADDITION VIA MUNICIPAL AGREEMENT	MAP A, SEGMENT 0
89110603	UNION	11/6/03	SR 3224		ELMSWORTH LANE	0.04	SYSTEM ADDITION VIA MUNICIPAL AGREEMENT	MAP A, SEGMENT 0

MUNICIPALITY	COUNTY	APPROVAL DATE	NEW NUMBER	EXISTING NUMBER	STREET NAME	LENGTH (miles)	TYPE OF CHANGE	REMARKS (See Attached Map)
89110603	UNION	11/6/03	SR 3225		INNERBROOK COURT	0.05	SYSTEM ADDITION VIA MUNICIPAL AGREEMENT	MAP A, SEGMENT 0
89110603	UNION	11/6/03	SR 3227		LINSTEAD DRIVE	0.27	SYSTEM ADDITION VIA MUNICIPAL AGREEMENT	MAP A, SEGMENT 0
89110603	UNION	11/6/03	SR 3228		ALDRIDGE COURT	0.06	SYSTEM ADDITION VIA MUNICIPAL AGREEMENT	MAP A, SEGMENT 0
89110603	UNION	11/6/03	SR 3219		LONG NOOK LANE	0.25	SYSTEM ADDITION VIA MUNICIPAL AGREEMENT	MAP A, SEGMENT 0

PETITION #:

CO: UNION

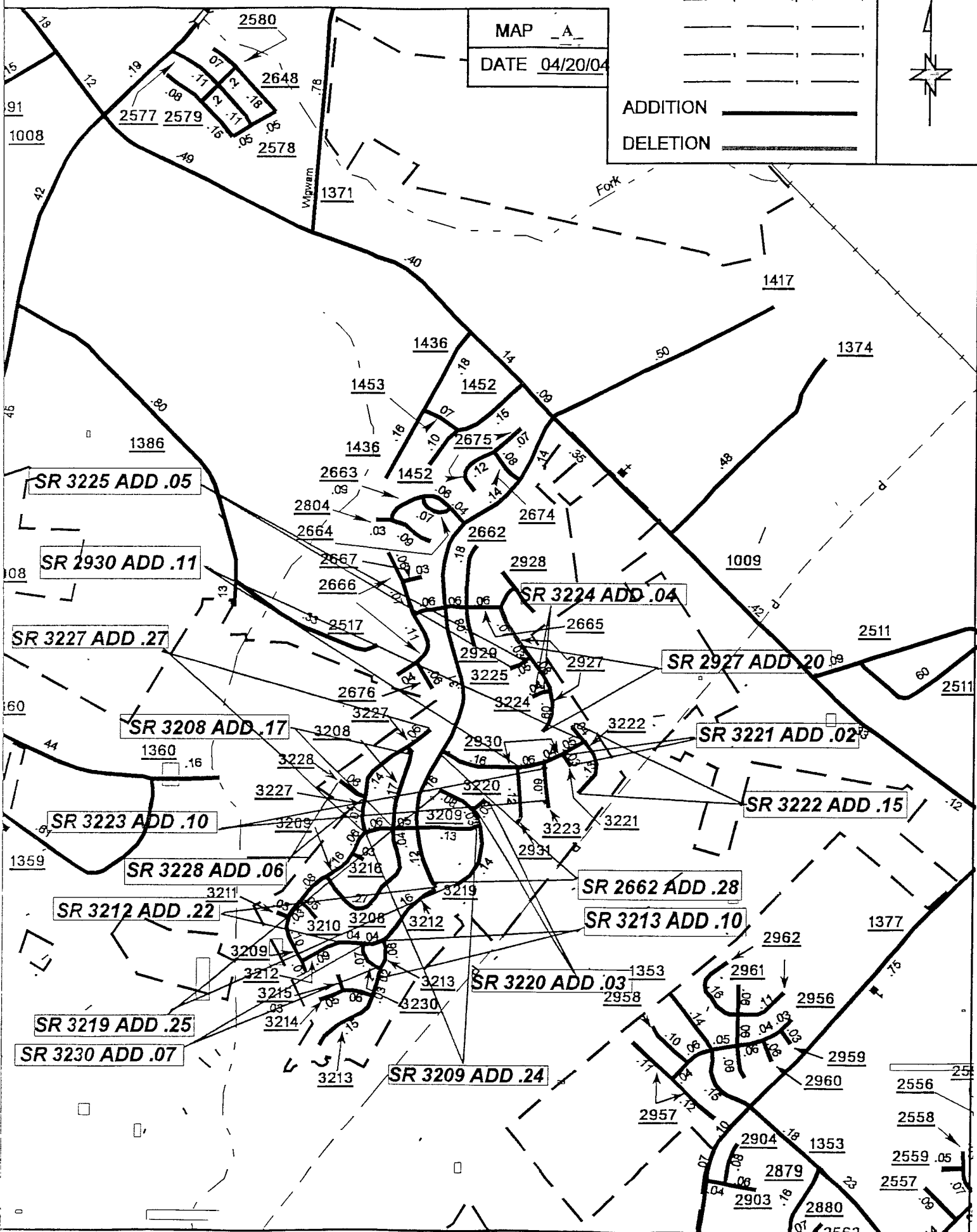
SR #:

MAP A

DATE 04/20/04

ADDITION 

DELETION 



SOURCE: PLAT

SHEET: 4 OF 5

NAME: YRT

SCALE: 4:1