



STATE OF NORTH CAROLINA
DEPARTMENT OF TRANSPORTATION

MICHAEL F. EASLEY
GOVERNOR

March 31, 2004

LYNDO TIPPETT
SECRETARY

MEMORANDUM TO: Mr. Jon G. Nance, PE
Division Engineer
Division 5

FROM: Forrest L. Robson, PE
GIS Director

SUBJECT: Road System Changes

The Road Inventory Section has been authorized to make the following changes to the state road system as indicated below. We request that you make similar changes to the related maps and files in your Division and District offices, and install appropriate road number signs if necessary. We have updated our records and county maps accordingly. If our system changes do not conform to the actual conditions in the field, please return this memorandum with recommendations.

91_0520_09-03

Municipality	County	Approval Date
RALEIGH	WAKE	9/9/03

Inquires about secondary road petition changes should be referred to Ron Tucker, Secondary Roads Group Supervisor at (919) 212-6080. Inquires about TIP Project changes should be referred to Tom Schroeder, Primary Highway Group Supervisor at (919) 212-6074. If you have further questions, please contact Hardee Cox, Road Inventory Manager at (919) 212-6060. Thank you for your assistance.

FLR/hrc
enclosures ()

- cc: BSIP
- Bridge Maintenance
- Pavement Management
- Permit Unit
- Right of Way
- Safety Management
- State Road Maintenance
- Traffic Engineering
- Traffic Surveys

MAILING ADDRESS:
NC DEPARTMENT OF TRANSPORTATION
GEOGRAPHIC INFORMATION SYSTEMS
1587 MAIL SERVICE CENTER
RALEIGH NC 27699-1587



www.ncdot.org/statewide/planning/gis

DELIVERY ADDRESS:
3401 CARL SANDBURG CT.
RALEIGH, NC 27610
PHONE. (919) 212-6000
FAX: (919) 212-5999

Road System Changes

MUNICIPALITY	COUNTY	APPROVAL DATE	NEW NUMBER	EXISTING NUMBER	STREET NAME	LENGTH (miles)	TYPE OF CHANGE	REMARKS (See Attached Map)
RALEIGH	WAKE	9/9/03		SR 3045	MARIETTA COURT	0.09	SYSTEM DELETION VIA	MAP A, SEGMENT 15
RALEIGH	WAKE	9/9/03		SR 3034	PEWTER PLACE	0.05	MUNICIPAL AGREEMENT SYSTEM DELETION VIA	MAP A, SEGMENT 14
RALEIGH	WAKE	9/9/03		SR 3033	LANTERN PLACE	0.05	MUNICIPAL AGREEMENT SYSTEM DELETION VIA	MAP A, SEGMENT 13
RALEIGH	WAKE	9/9/03		SR 3032	OLD POST ROAD	0.20	MUNICIPAL AGREEMENT SYSTEM DELETION VIA	MAP A, SEGMENT 12
RALEIGH	WAKE	9/9/03		SR 3031	CARRIAGE DRIVE	0.23	MUNICIPAL AGREEMENT SYSTEM DELETION VIA	MAP A, SEGMENT 11
RALEIGH	WAKE	9/9/03		SR 3017	RHODODENDRON DRIVE	0.15	MUNICIPAL AGREEMENT SYSTEM DELETION VIA	MAP A, SEGMENT 10
RALEIGH	WAKE	9/9/03		SR 3016	YEW CIRCLE	0.05	MUNICIPAL AGREEMENT SYSTEM DELETION VIA	MAP A, SEGMENT 9
RALEIGH	WAKE	9/9/03		SR 2906	WILLOW OAK ROAD	0.45	MUNICIPAL AGREEMENT SYSTEM DELETION VIA	MAP A, SEGMENT 3
RALEIGH	WAKE	9/9/03		SR 2905	PIN OAK ROAD	0.41	MUNICIPAL AGREEMENT SYSTEM DELETION VIA	MAP A, SEGMENT 2
RALEIGH	WAKE	9/9/03		SR 2904	LIVE OAK ROAD	0.37	MUNICIPAL AGREEMENT SYSTEM DELETION VIA	MAP A, SEGMENT 1
RALEIGH	WAKE	9/9/03		SR 1758	EDGE MONT DRIVE	0.26	MUNICIPAL AGREEMENT SYSTEM DELETION VIA	MAP A, SEGMENT 8
RALEIGH	WAKE	9/9/03		SR 1668	LAUREL HILLS ROAD	0.06	MUNICIPAL AGREEMENT SYSTEM DELETION VIA	MAP A, SEGMENT 7

MUNICIPALITY	COUNTY	APPROVAL DATE	NEW NUMBER	EXISTING NUMBER	STREET NAME	LENGTH (miles)	TYPE OF CHANGE	REMARKS (See Attached Map)
RALEIGH	WAKE	9/9/03		SR 1668	LAUREL HILLS ROAD	1.12	SYSTEM DELETION VIA MUNICIPAL AGREEMENT	MAP A, SEGMENT 6
RALEIGH	WAKE	9/9/03		SR 1668	LAUREL HILLS ROAD	0.16	SYSTEM DELETION VIA MUNICIPAL AGREEMENT	MAP A, SEGMENT 5
RALEIGH	WAKE	9/9/03		SR 1668	LAUREL HILLS ROAD	0.03	SYSTEM DELETION VIA MUNICIPAL AGREEMENT	MAP A, SEGMENT 4

PETITION #: Mun. Agr.

CO: Wake

SR #: 1668, 3016, 3017,

3032, 3031, 3033,

3034, 3045, 1758,

MAP A

DATE 5/25/04

ADDITION _____

DELETION X



SR 1668 abd. 1.39 miles

SR 3016 abd. .05 miles

SR 3017 abd. .15 miles

SR 3031 abd. .23 miles

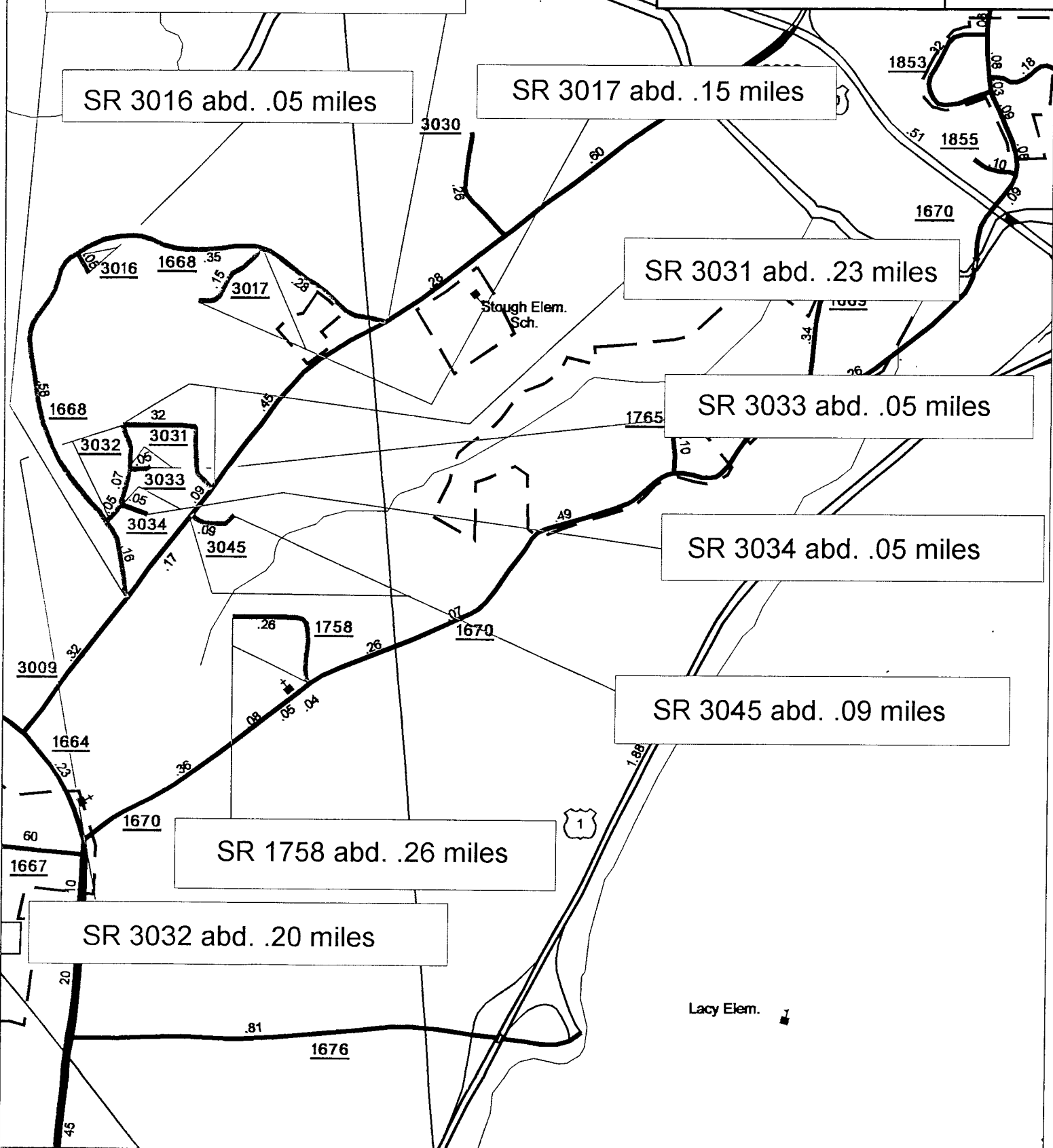
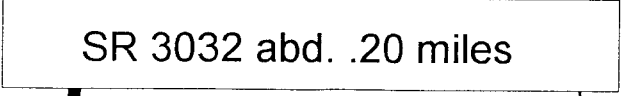
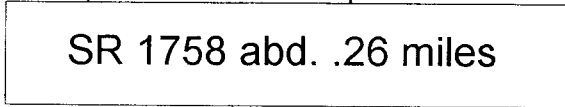
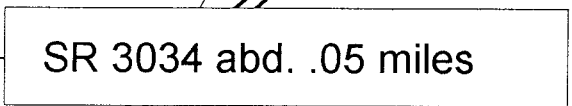
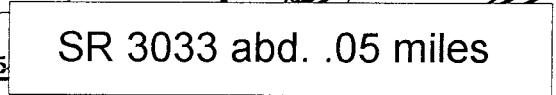
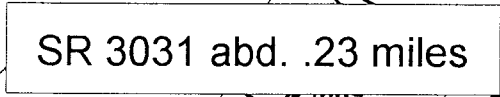
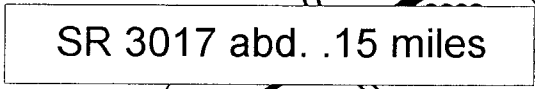
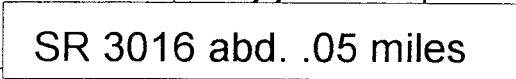
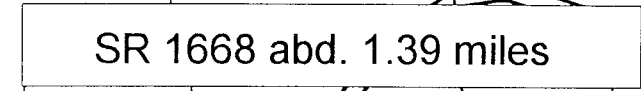
SR 3033 abd. .05 miles

SR 3034 abd. .05 miles

SR 3045 abd. .09 miles

SR 1758 abd. .26 miles

SR 3032 abd. .20 miles



PETITION #: Mun. Agr.

CO: Wake

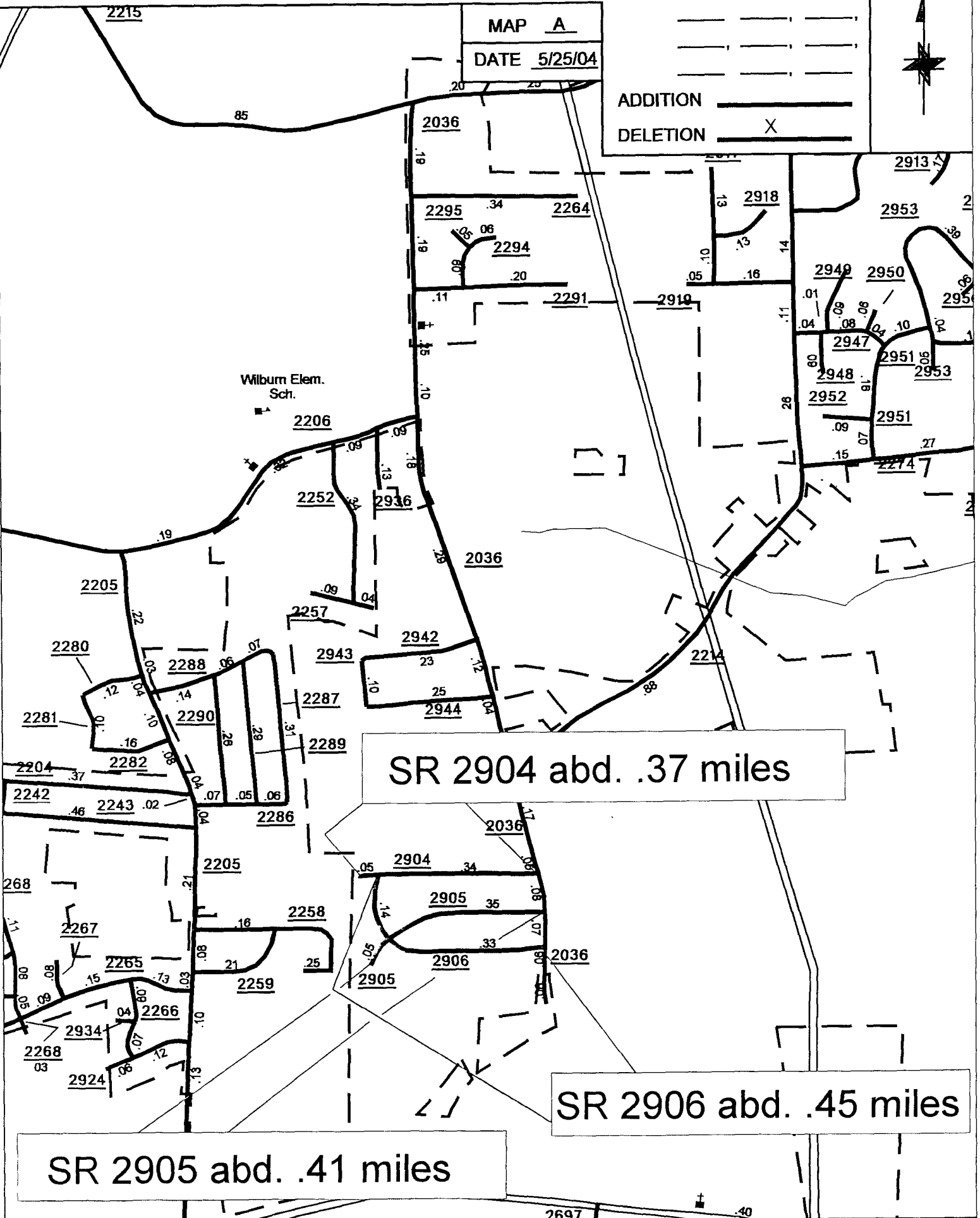
SR #: 2904, 2905, 2906

MAP A

DATE 5/25/04

ADDITION _____

DELETION X



SR 2904 abd. .37 miles

SR 2906 abd. .45 miles

SR 2905 abd. .41 miles

SOURCE: Plat

SHEET: 3 OF 9

NAME: RLN

SCALE: 4 to 1